

ZUUMA RNAV

Point Of Contact

Organization Name - Southern California Metroplex

POC's Name - Robert E. Henry-Metroplex Lead/Jose Gonzalez-NATCA Co-Lead

Telephone Number - (661) 265-8434

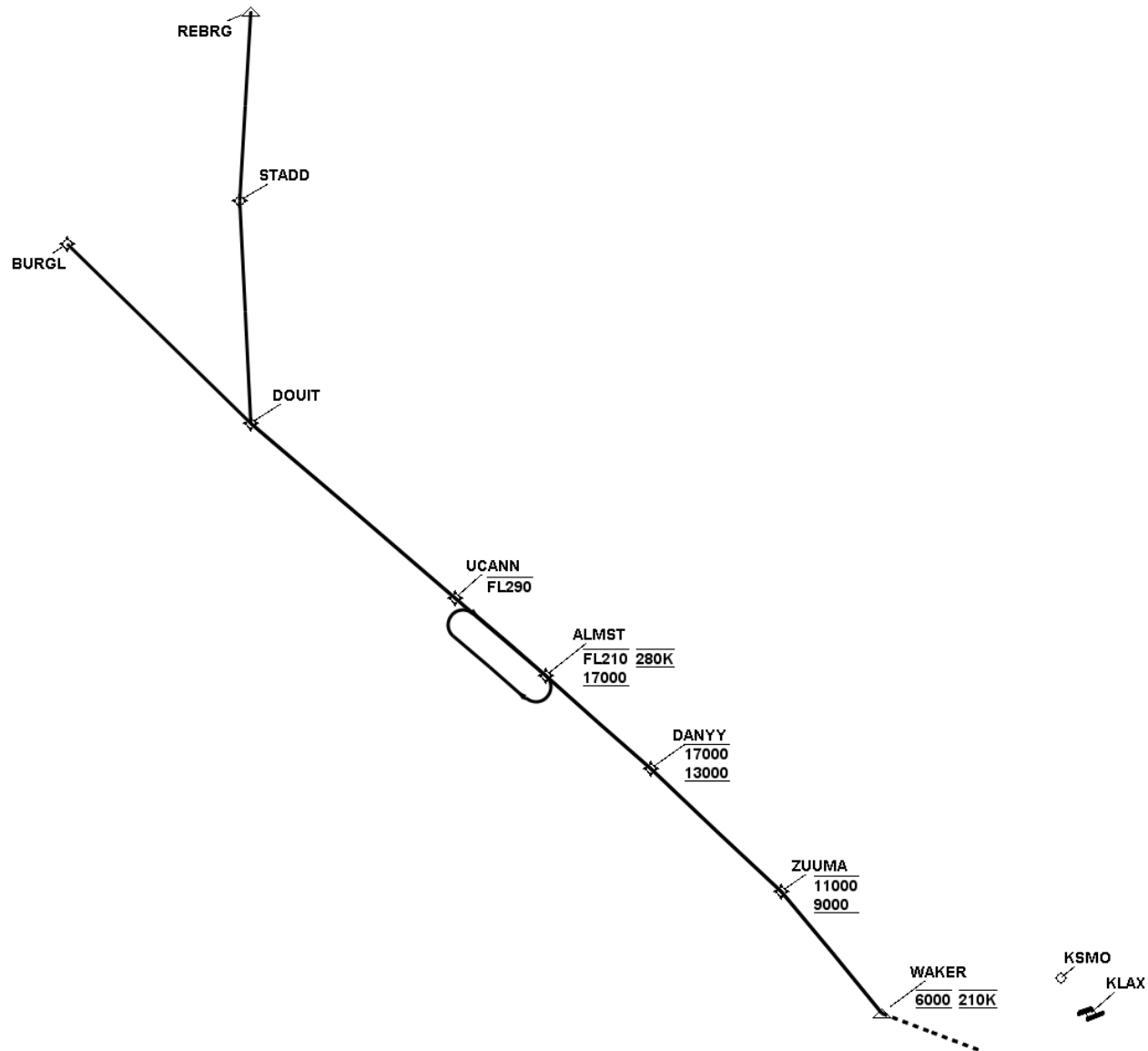
FAX Number - (661) 265-8338

Email Address - Robert.Henry@faa.gov;Jose.J.Gonzalez@faa.gov

TARGETS Distribution Package

Version:5.0.4.1

Date: Fri Jul 24 06:40:45 PDT 2015



ZUUMA RNAV

En Route Transition Data - BURGL

DB	End Point	Latitude (D° M' S.ss")	Longitude (D° M' S.ss")	FO/FB	Leg	TC	MC	Distance	Altitude	Speed	MEA	MOCA	Arc Center Lat (D° M' S.ss")	Arc Center Lon (D° M' S.ss")	Arc Radius (NM)
	BURGL WP	N35 39 57.68	W120 06 27.86		IF										
	DOUIT WP	N35 17 19.89	W119 49 27.26	FB	TF	148.33	136.33	26.52			17000	6600			
	UCANN WP	N34 54 29.21	W119 29 37.51	FB	TF	144.40	132.40	28.02	-29000		17000	6800			
	ALMST WP	N34 44 25.77	W119 20 58.30	FB	TF	144.60	132.60	12.31	+17000 -21000	280	17000	6500			
	DANYY WP	N34 32 23.00	W119 10 57.56	FB	TF	145.47	133.47	14.59	+13000 -17000		13000	9700			
	ZUUMA WP	N34 16 37.95	W118 58 40.98	FB	TF	147.08	135.08	18.72	+9000 -11000		9000	9000			

En Route Transition Data - REBRG

DB	End Point	Latitude (D° M' S.ss")	Longitude (D° M' S.ss")	FO/FB	Leg	TC	MC	Distance	Altitude	Speed	MEA	MOCA	Arc Center Lat (D° M' S.ss")	Arc Center Lon (D° M' S.ss")	Arc Radius (NM)
AVNIS	REBRG WP	N35 58 53.00	W119 36 53.00		IF										
	STADD WP	N35 40 00.93	W119 43 57.63	FB	TF	197.02	185.02	19.70			17000	2800			
	DOUIT WP	N35 17 19.89	W119 49 27.26	FB	TF	191.23	179.23	23.09			17000	6600			
	UCANN WP	N34 54 29.21	W119 29 37.51	FB	TF	144.40	132.40	28.02	-29000		17000	6800			
	ALMST WP	N34 44 25.77	W119 20 58.30	FB	TF	144.60	132.60	12.31	+17000 -21000	280	17000	6500			
	ALMST WP	N34 44 25.77	W119 20 58.30		HM	144.60	132.60	10.00							
	DANYY WP	N34 32 23.00	W119 10 57.56	FB	TF	145.47	133.47	14.59	+13000 -17000		13000	9700			
	ZUUMA WP	N34 16 37.95	W118 58 40.98	FB	TF	147.08	135.08	18.72	+9000 -11000		9000	9000			

Common Route Data - Landing KSMO

DB	End Point	Latitude (D° M' S.ss")	Longitude (D° M' S.ss")	FO/FB	Leg	TC	MC	Distance	Altitude	Speed	MEA	MOCA	Arc Center Lat (D° M' S.ss")	Arc Center Lon (D° M' S.ss")	Arc Radius (NM)
	ZUUMA WP	N34 16 37.95	W118 58 40.98		IF				+9000 -11000						
AVNIS	WAKER WP	N34 01 53.80	W118 50 00.06	FB	TF	153.86	141.86	16.38	6000	210	6000	5200			

Runway Transition Data - Landing KLAX

DB	End Point	Latitude (D° M' S.ss")	Longitude (D° M' S.ss")	FO/FB	Leg	TC	MC	Distance	Altitude	Speed	MEA	MOCA	Arc Center Lat (D° M' S.ss")	Arc Center Lon (D° M' S.ss")	Arc Radius (NM)
	ZUUMA WP	N34 16 37.95	W118 58 40.98		IF				+9000 -11000						
AVNIS	WAKER WP	N34 01 53.80	W118 50 00.06	FB	TF	153.86	141.86	16.38	6000	210	6000	5200			

ZUUMA RNAV

Waypoint Data

DB	Waypoint	Arc Center	Lat-Long (DMS.S)	Latitude (Deg)	Longitude (Deg)	Latitude (D°, M.mm')	Longitude (D°, M.mm')	Latitude (D° M' S.ss")	Longitude (D° M' S.ss")
	ALMST WP		344425.77N-1192058.30W	N 34.7404910	W 119.3495279	N34 44.429	W119 20.972	N34 44 25.77	W119 20 58.30
	BURGL WP		353957.68N-1200627.86W	N 35.6660218	W 120.1077379	N35 39.961	W120 06.464	N35 39 57.68	W120 06 27.86
	DANYY WP		343223.00N-1191057.56W	N 34.5397222	W 119.1826559	N34 32.383	W119 10.959	N34 32 23.00	W119 10 57.56
	DOUIT WP		351719.89N-1194927.26W	N 35.2888571	W 119.8242393	N35 17.331	W119 49.454	N35 17 19.89	W119 49 27.26
AVNIS	REBRG WP		355853.00N-1193653.00W	N 35.9813889	W 119.6147222	N35 58.883	W119 36.883	N35 58 53.00	W119 36 53.00
	STADD WP		354000.93N-1194357.63W	N 35.6669260	W 119.7326742	N35 40.016	W119 43.960	N35 40 00.93	W119 43 57.63
AVNIS	TFD VORTAC		325309.08N-1115431.44W	N 32.8858556	W 111.9087333	N32 53.151	W111 54.524	N32 53 09.08	W111 54 31.44
	UCANN WP		345429.21N-1192937.51W	N 34.9081128	W 119.4937514	N34 54.487	W119 29.625	N34 54 29.21	W119 29 37.51
AVNIS	WAKER WP		340153.80N-1185000.06W	N 34.0316111	W 118.8333500	N34 01.897	W118 50.001	N34 01 53.80	W118 50 00.06
	ZUUMA WP		341637.95N-1185840.98W	N 34.2772090	W 118.9780513	N34 16.633	W118 58.683	N34 16 37.95	W118 58 40.98

RS Results Landing KSMO

Last Evaluation: 24-Jul-2015 06:37:30
Reference Software Version: 1.5.2

Route Evaluation for BURGL:Landing KSMO

BURGL:Landing KSMO Evaluation Results Part 1/2

Leg Tp	End Pt	Turn Tp	Alt Restr	Alt Restr 2	Spd Restr	Turn Ang	Leg Length	Min Seg Length
IF	BURGL						0.0	0.0
TF	DOUIT	FLY_BY				4.1	26.52	1.0
TF	UCANN	FLY_BY	-29000.0			0.01	28.02	1.0
TF	ALMST	FLY_BY	+17000.0	-21000.0	280.0	0.78	12.31	1.0
TF	DANYY	FLY_BY	+13000.0	-17000.0		1.52	14.59	1.0
TF	ZUUMA	FLY_BY	+9000.0	-11000.0		6.67	18.72	1.0
TF	WAKER	FLY_BY	6000.0		210.0	29.28	16.38	1.27

ZUUMA RNAV

BURGL:Landing KSMO Evaluation Results Part 2/2

Leg Tp	End Pt	Turn Tp	DTA1	DTA1 Turn Rad	DTA1 Turn Alt	DTA1 Turn Spd	DTA1 Bank Ang	DTA1 Tailwind	DTA1 True Airspd	DTA1 vGround	DTA2	DTA2 Turn Rad	DTA2 Turn Alt	DTA2 Turn Spd	DTA2 Bank Ang	DTA2 Tailwind	DTA2 True Airspd	DTA2 vGround
IF	BURGL				0.0	0.0							0.0	0.0				
TF	DOUIT	FLY_BY	0.0		35135.46	300.0	0.0	117.0	559.0	570.0	1.93	54.11	28504.38	300.0	5.0	103.0	492.0	570.0
TF	UCANN	FLY_BY	1.93	54.11	28504.38	300.0	5.0	103.0	492.0	570.0	0.0		21500.16	300.0	0.0	90.0	434.0	501.0
TF	ALMST	FLY_BY	0.0		21500.16	300.0	0.0	90.0	434.0	501.0	1.24	182.07	18422.3	280.0	1.0	83.0	384.0	467.0
TF	DANYY	FLY_BY	1.24	182.07	18422.3	280.0	1.0	83.0	384.0	467.0	2.12	160.16	14774.77	280.0	1.0	76.0	362.0	438.0
TF	ZUUMA	FLY_BY	2.12	160.16	14774.77	280.0	1.0	76.0	362.0	438.0	2.35	40.43	10094.96	280.0	3.33	67.0	335.0	402.0
TF	WAKER	FLY_BY	2.35	40.43	10094.96	280.0	3.33	67.0	335.0	402.0	1.27	4.85	6000.0	210.0	14.64	59.0	236.0	295.0

BURGL:Landing KSMO Obstacle Evaluation

Start Pt	End Pt	Name	Source	AC (H/V (ft) AMSL)	Lat	Long	Height (ft) AMSL	Mnts Area	Pri/Sec Area	ROC (ft)	WCVH (ft)	MOCA (ft)	Min OCS Alt (ft)	Date
BURGL	DOUIT	TerrainPt_37_BURGL:Landing KSMO_BURGL:DOUIT		4E (+-250/+125)	N35° 17' 24.00"	W119° 45' 51.00"	4337.27	true	P	2000.0		6538	6537.27	24-Jul-2015 06:37:38
DOUIT	UCANN	TerrainPt_48_BURGL:Landing KSMO_DOUIT:UCANN		4E (+-250/+125)	N34° 55' 12.00"	W119° 24' 21.00"	4501.31	true	P	2000.0		6702	6701.31	24-Jul-2015 06:37:38
UCANN	ALMST	TerrainPt_27_BURGL:Landing KSMO_UCANN:ALMST		4E (+-250/+125)	N34° 45' 45.00"	W119° 16' 18.00"	5219.82	false	P	1000.0		6420	6419.82	24-Jul-2015 06:37:38
ALMST	DANYY	TerrainPt_16_BURGL:Landing KSMO_ALMST:DANYY		4E (+-250/+125)	N34° 37' 54.00"	W119° 16' 54.00"	7496.72	true	P	2000.0		9697	9696.72	24-Jul-2015 06:37:38
DANYY	ZUUMA	TerrainPt_38_BURGL:Landing KSMO_DANYY:ZUUMA		4E (+-250/+125)	N34° 30' 36.00"	W119° 04' 33.00"	6702.76	true	P	2000.0		8903	8902.76	24-Jul-2015 06:37:38
ZUUMA	WAKER	TerrainPt_4_BURGL:Landing KSMO_ZUUMA:WAKER		4E (+-250/+125)	N34° 07' 15.00"	W118° 55' 48.00"	2939.63	true	P	2000.0		5140	5139.63	24-Jul-2015 06:37:38

BURGL:Landing KSMO Criteria Failures

No failures.

Route Evaluation for REBRG:Landing KSMO

REBRG:Landing KSMO Evaluation Results Part 1/2

Leg Tp	End Pt	Turn Tp	Alt Restr	Alt Restr 2	Spd Restr	Turn Ang	Leg Length	Min Seg Length
IF	REBRG						0.0	0.0
TF	STADD	FLY_BY				5.72	19.7	1.0
TF	DOUIT	FLY_BY				46.78	23.09	20.0
TF	UCANN	FLY_BY	-29000.0			0.01	28.02	20.0
TF	ALMST	FLY_BY	+17000.0	-21000.0	280.0	0.78	12.31	1.0
TF	DANYY	FLY_BY	+13000.0	-17000.0		1.52	14.59	1.0
TF	ZUUMA	FLY_BY	+9000.0	-11000.0		6.67	18.72	1.0
TF	WAKER	FLY_BY	6000.0		210.0	29.28	16.38	1.27

REBRG:Landing KSMO Evaluation Results Part 2/2

Leg Tp	End Pt	Turn Tp	DTA1	DTA1 Turn Rad	DTA1 Turn Alt	DTA1 Turn Spd	DTA1 Bank Ang	DTA1 Tailwind	DTA1 True Airspd	DTA1 vGround	DTA2	DTA2 Turn Rad	DTA2 Turn Alt	DTA2 Turn Spd	DTA2 Bank Ang	DTA2 Tailwind	DTA2 True Airspd	DTA2 vGround
IF	REBRG				0.0	0.0							0.0	0.0				
TF	STADD	FLY_BY	0.0		39201.58	300.0	0.0	125.0	606.0	570.0	2.7	54.11	34276.75	300.0	5.0	115.0	549.0	570.0
TF	DOUIT	FLY_BY	2.7	54.11	34276.75	300.0	5.0	115.0	549.0	570.0	20.0	46.24	28504.38	300.0	6.0	103.0	492.0	570.0
TF	UCANN	FLY_BY	20.0	46.24	28504.38	300.0	6.0	103.0	492.0	570.0	0.0		21500.16	300.0	0.0	90.0	434.0	501.0
TF	ALMST	FLY_BY	0.0		21500.16	300.0	0.0	90.0	434.0	501.0	1.24	182.07	18422.3	280.0	1.0	83.0	384.0	467.0
TF	DANYY	FLY_BY	1.24	182.07	18422.3	280.0	1.0	83.0	384.0	467.0	2.12	160.16	14774.77	280.0	1.0	76.0	362.0	438.0
TF	ZUUMA	FLY_BY	2.12	160.16	14774.77	280.0	1.0	76.0	362.0	438.0	2.35	40.43	10094.96	280.0	3.33	67.0	335.0	402.0
TF	WAKER	FLY_BY	2.35	40.43	10094.96	280.0	3.33	67.0	335.0	402.0	1.27	4.85	6000.0	210.0	14.64	59.0	236.0	295.0

REBRG:Landing KSMO Obstacle Evaluation

Start Pt	End Pt	Name	Source	AC (H/V) (ft) AMSL)	Lat	Long	Height (ft) AMSL	Mnts Area	Pri/Sec Area	ROC (ft)	WCVH (ft)	MOCA (ft)	Min OCS Alt (ft)	Date
REBRG	STADD	TerrainPt_37_REBRG:Landing KSMO_REBRG:STADD		4E (+-250/+125)	N35° 40' 30.00"	W119° 46' 48.00"	505.25	true	P	2000.0		2706	2705.25	24-Jul-2015 06:37:38
STADD	DOUIT	TerrainPt_38_REBRG:Landing KSMO_STADD:DOUIT		4E (+-250/+125)	N35° 17' 27.00"	W119° 45' 51.00"	4337.27	true	P	2000.0		6538	6537.27	24-Jul-2015 06:37:38
DOUIT	UCANN	TerrainPt_48_BURGL:Landing KSMO_DOUIT:UCANN		4E (+-250/+125)	N34° 55' 12.00"	W119° 24' 21.00"	4501.31	true	P	2000.0		6702	6701.31	24-Jul-2015 06:37:38
UCANN	ALMST	TerrainPt_27_BURGL:Landing KSMO_UCANN:ALMST		4E (+-250/+125)	N34° 45' 45.00"	W119° 16' 18.00"	5219.82	false	P	1000.0		6420	6419.82	24-Jul-2015 06:37:38
ALMST	DANYY	TerrainPt_16_BURGL:Landing KSMO_ALMST:DANYY		4E (+-250/+125)	N34° 37' 54.00"	W119° 16' 54.00"	7496.72	true	P	2000.0		9697	9696.72	24-Jul-2015 06:37:38
DANYY	ZUUMA	TerrainPt_38_BURGL:Landing KSMO_DANYY:ZUUMA		4E (+-250/+125)	N34° 30' 36.00"	W119° 04' 33.00"	6702.76	true	P	2000.0		8903	8902.76	24-Jul-2015 06:37:38
ZUUMA	WAKER	TerrainPt_4_BURGL:Landing KSMO_ZUUMA:WAKER		4E (+-250/+125)	N34° 07' 15.00"	W118° 55' 48.00"	2939.63	true	P	2000.0		5140	5139.63	24-Jul-2015 06:37:38

REBRG:Landing KSMO Criteria Failures

No failures.

Evaluation Input

Name:	RS Results Landing KSMO
Project:	LAX_SMO ZUUMA STAR paperwork_12E_20150724
Last evaluated:	24-Jul-2015 06:37:30
Evaluated obstacles?:	true
Obstacle Database:	-
Evaluated terrain?:	true
Worst Case Vegetation Height (ft) AGL:	0

Terrain Information

Terrain Extractor Name	Extractor Location	Extractor Type	Resolution
DTED 3 Sec	C:\Program Files (x86)\TARGETS\data\DTED-3Sec	org.mitre.caasd.terrain.DTEExtractor	3.0

Procedure Criteria Failures

No failures.

Evaluation Notes and Warnings

No failures.

Obstacles Requiring Accuracy Code Verification

None.

Database Effective Dates

Database	Date
UddfObstacle	03/09/2015
Tiled AVNII	N/A
OEAAA	N/A
NFDC	06/25/2015
IFP_OFFLINE	N/A
AVNIS	07/24/2015
DOF	06/25/2015
AVNII_OFFLINE	N/A
AVNII	07/24/2015
CIFP	07/23/2015

Notes: