

ROKKR RNAV

Point Of Contact

Organization Name - Southern California Metroplex

POC's Name - Robert E. Henry, SOCAL Metroplex Manager: Jose Gonzalez, SOCAL Metroplex NATCA CO-LEAD

Telephone Number - (661) 265-8434

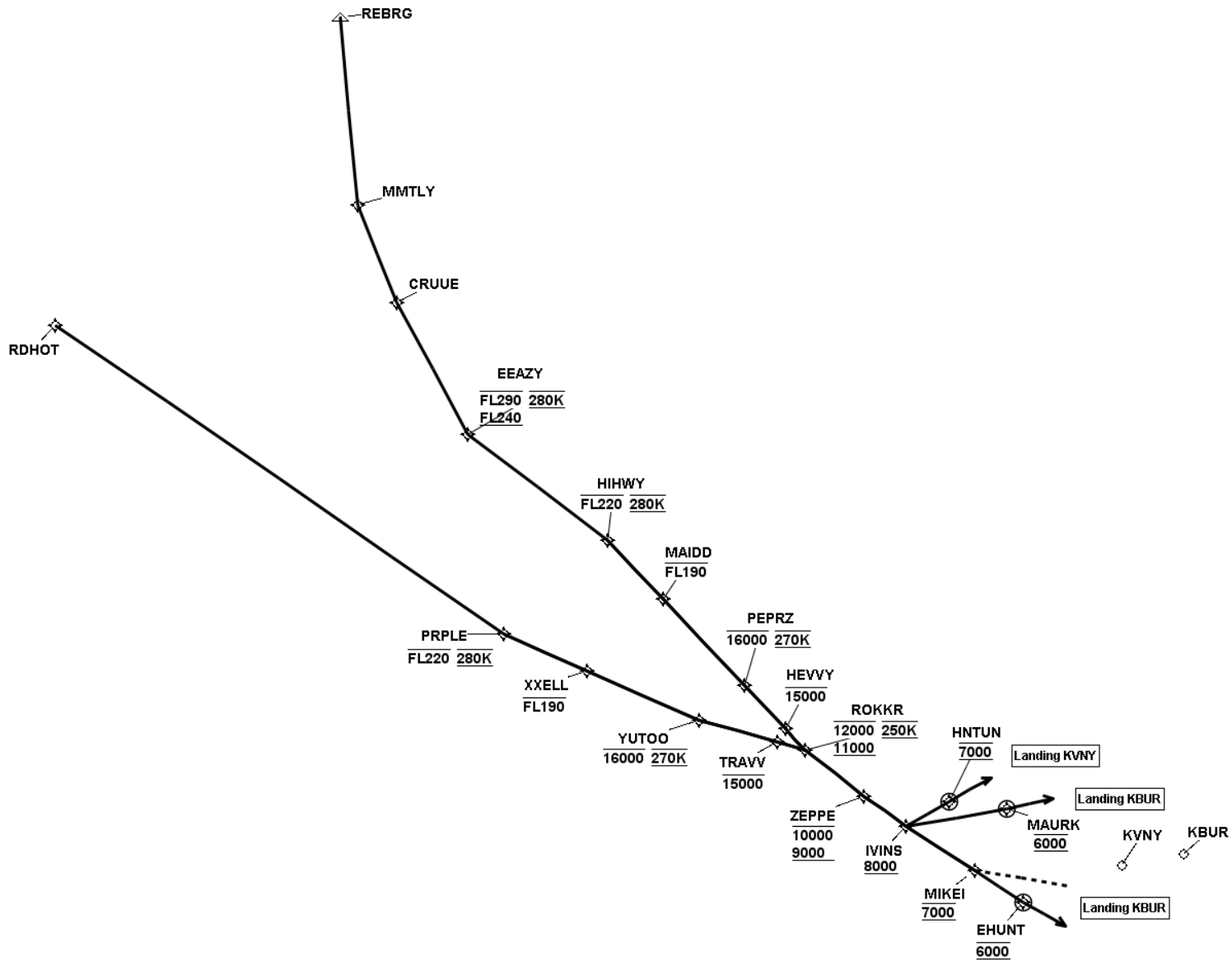
FAX Number - (661) 265-8338

Email Address - Robert.Henry@FAA.GOV; Jose.J.Gonzalez@FAA.GOV

TARGETS Distribution Package

Version:5.0.5

Date: Mon Apr 11 09:04:25 PDT 2016



ROKKR RNAV

En Route Transition Data - HIHWY

DB	End Point	Latitude (D° M' S.ss")	Longitude (D° M' S.ss")	FO/FB	Leg	TC	MC	Distance	Altitude	Speed	MEA	MOCA	Arc Center Lat (D° M' S.ss")	Arc Center Lon (D° M' S.ss")	Arc Radius (NM)
	HIHWY WP	N34 59 06.13	W119 21 24.89		IF				-22000	280					
	MAIDD WP	N34 51 40.67	W119 16 36.53	FB	TF	151.91	139.91	8.40	-19000		12000	9400			
	PEPRZ WP	N34 40 47.34	W119 09 26.41	FB	TF	151.45	139.45	12.37	-16000	270	12000	11100			
	HEVY WP	N34 35 21.52	W119 05 54.28	FB	TF	151.70	139.70	6.16	-15000		11000	9200			
	ROKKR WP	N34 32 42.12	W119 04 12.00	FB	TF	152.03	140.03	3.00	+11000 -12000	250	11000	9200			

En Route Transition Data - PRPLE

DB	End Point	Latitude (D° M' S.ss")	Longitude (D° M' S.ss")	FO/FB	Leg	TC	MC	Distance	Altitude	Speed	MEA	MOCA	Arc Center Lat (D° M' S.ss")	Arc Center Lon (D° M' S.ss")	Arc Radius (NM)
	PRPLE WP	N34 52 29.65	W119 37 06.29		IF				-22000	280					
	XXELL WP	N34 46 28.51	W119 28 08.66	FB	TF	129.12	117.12	9.51	-19000		12000	8100			
	YUTOO WP	N34 38 36.46	W119 16 08.63	FB	TF	128.39	116.39	12.63	-16000	270	12000	9700			
	TRAVV WP	N34 34 14.54	W119 07 18.13	FB	TF	120.80	108.80	8.50	-15000		11000	9700			
	ROKKR WP	N34 32 42.12	W119 04 12.00	FB	TF	120.96	108.96	2.99	+11000 -12000	250	11000	9200			

En Route Transition Data - RDHOT

DB	End Point	Latitude (D° M' S.ss")	Longitude (D° M' S.ss")	FO/FB	Leg	TC	MC	Distance	Altitude	Speed	MEA	MOCA	Arc Center Lat (D° M' S.ss")	Arc Center Lon (D° M' S.ss")	Arc Radius (NM)
	RDHOT WP	N35 35 33.31	W120 21 36.43		IF										
	PRPLE WP	N34 52 29.65	W119 37 06.29	FB	TF	139.49	127.49	56.37	-22000	280	12000	7400			
	XXELL WP	N34 46 28.51	W119 28 08.66	FB	TF	129.12	117.12	9.51	-19000		12000	8100			
	YUTOO WP	N34 38 36.46	W119 16 08.63	FB	TF	128.39	116.39	12.63	-16000	270	12000	9700			
	TRAVV WP	N34 34 14.54	W119 07 18.13	FB	TF	120.80	108.80	8.50	-15000		11000	9700			
	ROKKR WP	N34 32 42.12	W119 04 12.00	FB	TF	120.96	108.96	2.99	+11000 -12000	250	11000	9200			

En Route Transition Data - REBRG

DB	End Point	Latitude (D° M' S.ss")	Longitude (D° M' S.ss")	FO/FB	Leg	TC	MC	Distance	Altitude	Speed	MEA	MOCA	Arc Center Lat (D° M' S.ss")	Arc Center Lon (D° M' S.ss")	Arc Radius (NM)
AVNIS	REBRG WP	N35 58 53.00	W119 36 53.00		IF										
	MMTLY WP	N35 39 29.51	W119 40 49.65	FB	TF	189.43	177.43	19.63			17000	2700			
	CRUUE WP	N35 28 34.02	W119 39 18.55	FB	TF	173.51	161.51	10.98			17000	2900			
	EEAZY WP	N35 13 28.56	W119 34 54.76	FB	TF	166.55	154.55	15.49	+24000 -29000	280	17000	5800			
	HIHWY WP	N34 59 06.13	W119 21 24.89	FB	TF	142.28	130.28	18.13	-22000	280	12000	6800			
	MAIDD WP	N34 51 40.67	W119 16 36.53	FB	TF	151.91	139.91	8.40	-19000		12000	9400			
	PEPRZ WP	N34 40 47.34	W119 09 26.41	FB	TF	151.45	139.45	12.37	-16000	270	12000	11100			
	HEVVY WP	N34 35 21.52	W119 05 54.28	FB	TF	151.70	139.70	6.16	-15000		11000	9200			
	ROKKR WP	N34 32 42.12	W119 04 12.00	FB	TF	152.03	140.03	3.00	+11000 -12000	250	11000	9200			

Common Route Data - Landing KVMY ROKKR

DB	End Point	Latitude (D° M' S.ss")	Longitude (D° M' S.ss")	FO/FB	Leg	TC	MC	Distance	Altitude	Speed	MEA	MOCA	Arc Center Lat (D° M' S.ss")	Arc Center Lon (D° M' S.ss")	Arc Radius (NM)
	ROKKR WP	N34 32 42.12	W119 04 12.00		IF				+11000 -12000	250					
	ZEPPE WP	N34 26 29.90	W118 58 30.76	FB	TF	142.77	130.77	7.78	+9000 -10000		9000	9000			
	IVINS WP	N34 22 19.84	W118 54 23.15	FB	TF	140.61	128.61	5.38	+8000		7200	7200			
	HNTUN WP	N34 23 39.80	W118 48 20.40	FO	TF	75.08	63.08	5.18	7000		7000	6200			
	HNTUN WP	N34 23 39.80	W118 48 20.40		FM	75.08	63.08								

Common Route Data - ROKKR

DB	End Point	Latitude (D° M' S.ss")	Longitude (D° M' S.ss")	FO/FB	Leg	TC	MC	Distance	Altitude	Speed	MEA	MOCA	Arc Center Lat (D° M' S.ss")	Arc Center Lon (D° M' S.ss")	Arc Radius (NM)
	ROKKR WP	N34 32 42.12	W119 04 12.00		IF				+11000 -12000	250					
	ZEPPE WP	N34 26 29.90	W118 58 30.76	FB	TF	142.77	130.77	7.78	+9000 -10000		9000	9000			
	IVINS WP	N34 22 19.84	W118 54 23.15	FB	TF	140.61	128.61	5.38	+8000		7200	7200			

Runway Transition Data - KVMY:RW08

DB	End Point	Latitude (D° M' S.ss")	Longitude (D° M' S.ss")	FO/FB	Leg	TC	MC	Distance	Altitude	Speed	MEA	MOCA	Arc Center Lat (D° M' S.ss")	Arc Center Lon (D° M' S.ss")	Arc Radius (NM)
	IVINS WP	N34 22 19.84	W118 54 23.15		IF				+8000						
AVNIS	MIKEI WP	N34 16 01.86	W118 47 28.90	FB	TF	137.69	125.69	8.50	7000		4600	4600			

ROKKR RNAV

Runway Transition Data - KBUR:RW15

DB	End Point	Latitude (D° M' S.ss")	Longitude (D° M' S.ss")	FO/FB	Leg	TC	MC	Distance	Altitude	Speed	MEA	MOCA	Arc Center Lat (D° M' S.ss")	Arc Center Lon (D° M' S.ss")	Arc Radius (NM)
	IVINS WP	N34 22 19.84	W118 54 23.15		IF				+8000						
	MAURK WP	N34 21 23.60	W118 41 39.00	FO	TF	95.01	83.01	10.58	6000		6000	5800			
	MAURK WP	N34 21 23.60	W118 41 39.00		FM	95.01	80.01								

Runway Transition Data - KBUR:RW33

DB	End Point	Latitude (D° M' S.ss")	Longitude (D° M' S.ss")	FO/FB	Leg	TC	MC	Distance	Altitude	Speed	MEA	MOCA	Arc Center Lat (D° M' S.ss")	Arc Center Lon (D° M' S.ss")	Arc Radius (NM)
	IVINS WP	N34 22 19.84	W118 54 23.15		IF				+8000						
AVNIS	MIKEI WP	N34 16 01.86	W118 47 28.90	FB	TF	137.69	125.69	8.50	7000		4600	4600			
	EHUNT WP	N34 11 34.81	W118 42 37.13	FO	TF	137.75	125.75	6.00	6000		4600	4600			
	EHUNT WP	N34 11 34.81	W118 42 37.13		FM	137.75	122.75								

Waypoint Data

DB	Waypoint	Arc Center	Lat-Long (DMS.S)	Latitude (Deg)	Longitude (Deg)	Latitude (D°, M.mm')	Longitude (D°, M.mm')	Latitude (D° M' S.ss")	Longitude (D° M' S.ss")
	CRUUE WP		352834.02N-1193918.55W	N 35.4761168	W 119.6551519	N35 28.567	W119 39.309	N35 28 34.02	W119 39 18.55
	EEAZY WP		351328.56N-1193454.76W	N 35.2245994	W 119.5818766	N35 13.476	W119 34.913	N35 13 28.56	W119 34 54.76
	EHUNT WP		341134.81N-1184237.13W	N 34.1930024	W 118.7103146	N34 11.580	W118 42.619	N34 11 34.81	W118 42 37.13
	HEVY WP		343521.52N-1190554.28W	N 34.5893104	W 119.0984115	N34 35.359	W119 05.905	N34 35 21.52	W119 05 54.28
	HIHWY WP		345906.13N-1192124.89W	N 34.9850359	W 119.3569127	N34 59.102	W119 21.415	N34 59 06.13	W119 21 24.89
	HNTUN WP		342339.80N-1184820.40W	N 34.3943889	W 118.8056679	N34 23.663	W118 48.340	N34 23 39.80	W118 48 20.40
	IVINS WP		342219.84N-1185423.15W	N 34.3721770	W 118.9064312	N34 22.331	W118 54.386	N34 22 19.84	W118 54 23.15
AVNIS	LAX VORTAC		335559.33N-1182555.24W	N 33.9331472	W 118.4320111	N33 55.989	W118 25.921	N33 55 59.33	W118 25 55.24
	MAIDD WP		345140.67N-1191636.53W	N 34.8612964	W 119.2768141	N34 51.678	W119 16.609	N34 51 40.67	W119 16 36.53
	MAURK WP		342123.60N-1184139.00W	N 34.3565556	W 118.6941667	N34 21.393	W118 41.650	N34 21 23.60	W118 41 39.00
AVNIS	MIKEI WP		341601.86N-1184728.90W	N 34.2671833	W 118.7913611	N34 16.031	W118 47.482	N34 16 01.86	W118 47 28.90
	MMTLY WP		353929.51N-1194049.65W	N 35.6581959	W 119.6804593	N35 39.492	W119 40.828	N35 39 29.51	W119 40 49.65
	PEPRZ WP		344047.34N-1190926.41W	N 34.6798163	W 119.1573361	N34 40.789	W119 09.440	N34 40 47.34	W119 09 26.41
	PRPLE WP		345229.65N-1193706.29W	N 34.8749029	W 119.6184125	N34 52.494	W119 37.105	N34 52 29.65	W119 37 06.29
	RDHOT WP		353533.31N-1202136.43W	N 35.5925854	W 120.3601182	N35 35.555	W120 21.607	N35 35 33.31	W120 21 36.43
AVNIS	REBRG WP		355853.00N-1193653.00W	N 35.9813889	W 119.6147222	N35 58.883	W119 36.883	N35 58 53.00	W119 36 53.00
	ROKKR WP		343242.12N-1190412.00W	N 34.5450332	W 119.0700010	N34 32.702	W119 04.200	N34 32 42.12	W119 04 12.00
AVNIS	TFD VORTAC		325309.08N-1115431.44W	N 32.8858556	W 111.9087333	N32 53.151	W111 54.524	N32 53 09.08	W111 54 31.44
	TRAVV WP		343414.54N-1190718.13W	N 34.5707068	W 119.1217027	N34 34.242	W119 07.302	N34 34 14.54	W119 07 18.13
	XXELL WP		344628.51N-1192808.66W	N 34.7745851	W 119.4690734	N34 46.475	W119 28.144	N34 46 28.51	W119 28 08.66
	YUTOO WP		343836.46N-1191608.63W	N 34.6434609	W 119.2690632	N34 38.608	W119 16.144	N34 38 36.46	W119 16 08.63
	ZEPPE WP		342629.90N-1185830.76W	N 34.4416380	W 118.9752104	N34 26.498	W118 58.513	N34 26 29.90	W118 58 30.76

ROKKR RNAV

RS Results Landing KVNY ROKKR

Last Evaluation: 11-Apr-2016 09:00:52
Reference Software Version: 1.5.3

Route Evaluation for HIHWY:Landing KVNY ROKKR

HIHWY:Landing KVNY ROKKR Evaluation Results Part 1/2

Leg Tp	End Pt	Turn Tp	Alt Restr	Alt Restr 2	Spd Restr	Turn Ang	Leg Length	Min Seg Length
IF	HIHWY		-22000.0		280.0		0.0	0.0
TF	MAIDD	FLY_BY	-19000.0			0.51	8.4	1.0
TF	PEPRZ	FLY_BY	-16000.0		270.0	0.18	12.37	1.0
TF	HEVVY	FLY_BY	-15000.0			0.3	6.16	1.0
TF	ROKKR	FLY_BY	+11000.0	-12000.0	250.0	9.28	3.0	1.0
TF	ZEPPE	FLY_BY	+9000.0	-10000.0		2.22	7.78	1.0
TF	IVINS	FLY_BY	+8000.0			65.56	5.38	2.52
TF	HNTUN	FLY_OVER	7000.0				5.18	2.52
FM							0.0	0.0

HIHWY:Landing KVNY ROKKR Evaluation Results Part 2/2

Leg Tp	End Pt	Turn Tp	DTA1	DTA1 Turn Rad	DTA1 Turn Alt	DTA1 Turn Spd	DTA1 Bank Ang	DTA1 Tailwind	DTA1 True Airspd	DTA1 vGround	DTA2	DTA2 Turn Rad	DTA2 Turn Alt	DTA2 Turn Spd	DTA2 Bank Ang	DTA2 Tailwind	DTA2 True Airspd	DTA2 vGround
IF	HIHWY				0.0	0.0							0.0	0.0				
TF	MAIDD	FLY_BY	0.0		19066.38	280.0	0.0	85.0	389.0	474.0	0.77	173.59	16966.39	280.0	1.0	81.0	375.0	456.0
TF	PEPRZ	FLY_BY	0.77	173.59	16966.39	280.0	1.0	81.0	375.0	456.0	0.22	145.86	13873.54	270.0	1.0	74.0	344.0	418.0
TF	HEVVY	FLY_BY	0.22	145.86	13873.54	270.0	1.0	74.0	344.0	418.0	0.36	137.61	12334.44	270.0	1.0	71.0	335.0	406.0
TF	ROKKR	FLY_BY	0.36	137.61	12334.44	270.0	1.0	71.0	335.0	406.0	2.07	25.53	11583.79	250.0	4.64	70.0	307.0	377.0
TF	ZEPPE	FLY_BY	2.07	25.53	11583.79	250.0	4.64	70.0	307.0	377.0	1.92	99.05	9639.97	250.0	1.11	66.0	297.0	363.0
TF	IVINS	FLY_BY	1.92	99.05	9639.97	250.0	1.11	66.0	297.0	363.0	2.52	3.92	8294.41	250.0	25.0	63.0	291.0	354.0
TF	HNTUN	FLY_OVER	2.52	3.92	8294.41	250.0	25.0	63.0	291.0	354.0	0.0		7000.0	250.0	0.0	61.0	285.0	346.0
FM			0.0		7000.0	250.0	0.0	61.0	285.0	346.0			0.0	0.0				

ROKKR RNAV

HIHWY:Landing KVNY ROKKR Obstacle Evaluation

Start Pt	End Pt	Name	Source	AC (H/V (ft) AMSL)	Lat	Long	Height (ft) AMSL	Mnts Area	Pri/Sec Area	ROC (ft)	WCVH (ft)	MOCA (ft)	Min OCS Alt (ft)	Date
HIHWY	MAIDD	TerrainPt_51_HIHWY:Landing KVNY ROKKR_HIHWY:MAIDD		4E (+- 250/+125)	N34° 52' 09.00"	W119° 11' 24.00"	7162.07	true	P	2000.0		9363	9362.07	11-Apr-2016 09:01:54
MAIDD	PEPRZ	TerrainPt_0_HIHWY:Landing KVNY ROKKR_MAIDD:PEPRZ		4E (+- 250/+125)	N34° 48' 48.00"	W119° 10' 03.00"	8815.62	true	P	2000.0		11016	11015.62	11-Apr-2016 09:01:54
PEPRZ	HEVVY	TerrainPt_19_HIHWY:Landing KVNY ROKKR_PEPRZ:HEVVY		4E (+- 250/+125)	N34° 38' 24.00"	W119° 12' 39.00"	6938.98	true	P	2000.0		9139	9138.98	11-Apr-2016 09:01:54
HEVVY	ROKKR	TerrainPt_0_HIHWY:Landing KVNY ROKKR_HEVVY:ROKKR		4E (+- 250/+125)	N34° 36' 21.00"	W119° 07' 42.00"	6902.89	true	P	2000.0		9103	9102.89	11-Apr-2016 09:01:54
ROKKR	ZEPPE	TerrainPt_34_HIHWY:Landing KVNY ROKKR_ROKKR:ZEPPE		4E (+- 250/+125)	N34° 30' 36.00"	W119° 04' 33.00"	6702.76	true	P	2000.0		8903	8902.76	11-Apr-2016 09:01:54
ZEPPE	IVINS	TerrainPt_13_HIHWY:Landing KVNY ROKKR_ZEPPE:IVINS		4E (+- 250/+125)	N34° 27' 30.00"	W119° 00' 33.00"	5000.0	true	P	2000.0		7200	7200.0	11-Apr-2016 09:01:54
IVINS	HNTUN	TerrainPt_28_HIHWY:Landing KVNY ROKKR_IVINS:HNTUN		4E (+- 250/+125)	N34° 28' 06.00"	W118° 52' 45.00"	3959.97	true	P	2000.0		6160	6159.97	11-Apr-2016 09:01:54

HIHWY:Landing KVNY ROKKR Criteria Failures

No failures.

Route Evaluation for PRPLE:Landing KVNY ROKKR

PRPLE:Landing KVNY ROKKR Evaluation Results Part 1/2

Leg Tp	End Pt	Turn Tp	Alt Restr	Alt Restr 2	Spd Restr	Turn Ang	Leg Length	Min Seg Length
IF	PRPLE		-22000.0		280.0		0.0	0.0
TF	XXELL	FLY_BY	-19000.0			0.82	9.51	1.0
TF	YUTOO	FLY_BY	-16000.0		270.0	7.7	12.63	1.0
TF	TRAVV	FLY_BY	-15000.0			0.07	8.5	1.0
TF	ROKKR	FLY_BY	+11000.0	-12000.0	250.0	21.78	2.99	2.07
TF	ZEPPE	FLY_BY	+9000.0	-10000.0		2.22	7.78	2.07
TF	IVINS	FLY_BY	+8000.0			65.56	5.38	2.52
TF	HNTUN	FLY_OVER	7000.0				5.18	2.52
FM							0.0	0.0

PRPLE:Landing KVNY ROKKR Evaluation Results Part 2/2

Leg Tp	End Pt	Turn Tp	DTA1	DTA1 Turn Rad	DTA1 Turn Alt	DTA1 Turn Spd	DTA1 Bank Ang	DTA1 Tailwind	DTA1 True Airspd	DTA1 vGround	DTA2	DTA2 Turn Rad	DTA2 Turn Alt	DTA2 Turn Spd	DTA2 Bank Ang	DTA2 Tailwind	DTA2 True Airspd	DTA2 vGround
IF	PRPLE				0.0	0.0							0.0	0.0				
TF	XXELL	FLY_BY	0.0		19992.64	280.0	0.0	87.0	395.0	486.0	1.27	177.42	17613.98	280.0	1.0	82.0	379.0	461.0
TF	YUTOO	FLY_BY	1.27	177.42	17613.98	280.0	1.0	82.0	379.0	461.0	2.61	38.73	14455.91	270.0	3.85	76.0	347.0	423.0
TF	TRAVV	FLY_BY	2.61	38.73	14455.91	270.0	3.85	76.0	347.0	423.0	0.09	137.61	12330.84	270.0	1.0	71.0	335.0	406.0
TF	ROKKR	FLY_BY	0.09	137.61	12330.84	270.0	1.0	71.0	335.0	406.0	2.07	10.76	11583.79	250.0	10.89	70.0	307.0	377.0
TF	ZEPPE	FLY_BY	2.07	10.76	11583.79	250.0	10.89	70.0	307.0	377.0	1.92	99.05	9639.97	250.0	1.11	66.0	297.0	363.0
TF	IVINS	FLY_BY	1.92	99.05	9639.97	250.0	1.11	66.0	297.0	363.0	2.52	3.92	8294.41	250.0	25.0	63.0	291.0	354.0
TF	HNTUN	FLY_OVER	2.52	3.92	8294.41	250.0	25.0	63.0	291.0	354.0	0.0		7000.0	250.0	0.0	61.0	285.0	346.0
FM			0.0		7000.0	250.0	0.0	61.0	285.0	346.0			0.0	0.0				

ROKKR RNAV

PRPLE:Landing KVNY ROKKR Obstacle Evaluation

Start Pt	End Pt	Name	Source	AC (H/V (ft) AMSL)	Lat	Long	Height (ft) AMSL	Mnts Area	Pri/Sec Area	ROC (ft)	WCVH (ft)	MOCA (ft)	Min OCS Alt (ft)	Date
PRPLE	XXELL	TerrainPt_14_PRPLE:Landing KVNY ROKKR_PRPLE:XXELL		4E (+-250/+125)	N34° 44' 06.00"	W119° 30' 39.00"	5862.86	true	P	2000.0		8063	8062.86	11-Apr-2016 09:01:54
XXELL	YUTOO	TerrainPt_16_PRPLE:Landing KVNY ROKKR_XXELL:YUTOO		4E (+-250/+125)	N34° 37' 54.00"	W119° 16' 54.00"	7496.72	true	P	2000.0		9697	9696.72	11-Apr-2016 09:01:54
YUTOO	TRAVV	TerrainPt_1_PRPLE:Landing KVNY ROKKR_YUTOO:TRAVV		4E (+-250/+125)	N34° 37' 54.00"	W119° 16' 54.00"	7496.72	true	P	2000.0		9697	9696.72	11-Apr-2016 09:01:54
TRAVV	ROKKR	TerrainPt_0_PRPLE:Landing KVNY ROKKR_TRAVV:ROKKR		4E (+-250/+125)	N34° 36' 21.00"	W119° 07' 42.00"	6902.89	true	P	2000.0		9103	9102.89	11-Apr-2016 09:01:54
ROKKR	ZEPPE	TerrainPt_34_HIHWY:Landing KVNY ROKKR_ROKKR:ZEPPE		4E (+-250/+125)	N34° 30' 36.00"	W119° 04' 33.00"	6702.76	true	P	2000.0		8903	8902.76	11-Apr-2016 09:01:54
ZEPPE	IVINS	TerrainPt_13_HIHWY:Landing KVNY ROKKR_ZEPPE:IVINS		4E (+-250/+125)	N34° 27' 30.00"	W119° 00' 33.00"	5000.0	true	P	2000.0		7200	7200.0	11-Apr-2016 09:01:54
IVINS	HNTUN	TerrainPt_28_HIHWY:Landing KVNY ROKKR_IVINS:HNTUN		4E (+-250/+125)	N34° 28' 06.00"	W118° 52' 45.00"	3959.97	true	P	2000.0		6160	6159.97	11-Apr-2016 09:01:54

PRPLE:Landing KVNY ROKKR Criteria Failures

No failures.

Route Evaluation for RDHOT:Landing KVN Y ROKKR

RDHOT:Landing KVN Y ROKKR Evaluation Results Part 1/2

Leg Tp	End Pt	Turn Tp	Alt Restr	Alt Restr 2	Spd Restr	Turn Ang	Leg Length	Min Seg Length
IF	RDHOT						0.0	0.0
TF	PRPLE	FLY_BY	-22000.0		280.0	10.79	56.37	3.72
TF	XXELL	FLY_BY	-19000.0			0.82	9.51	3.72
TF	YUTOO	FLY_BY	-16000.0		270.0	7.7	12.63	1.0
TF	TRAVV	FLY_BY	-15000.0			0.07	8.5	1.0
TF	ROKKR	FLY_BY	+11000.0	-12000.0	250.0	21.78	2.99	2.07
TF	ZEPPE	FLY_BY	+9000.0	-10000.0		2.22	7.78	2.07
TF	IVINS	FLY_BY	+8000.0			65.56	5.38	2.52
TF	HNTUN	FLY_OVER	7000.0				5.18	2.52
FM							0.0	0.0

RDHOT:Landing KVN Y ROKKR Evaluation Results Part 2/2

Leg Tp	End Pt	Turn Tp	DTA1	DTA1 Turn Rad	DTA1 Turn Alt	DTA1 Turn Spd	DTA1 Bank Ang	DTA1 Tailwind	DTA1 True Airspd	DTA1 vGround	DTA2	DTA2 Turn Rad	DTA2 Turn Alt	DTA2 Turn Spd	DTA2 Bank Ang	DTA2 Tailwind	DTA2 True Airspd	DTA2 vGround
IF	RDHOT				0.0	0.0							0.0	0.0				
TF	PRPLE	FLY_BY	0.0		34084.68	300.0	0.0	114.0	547.0	570.0	3.72	39.34	19992.64	280.0	5.0	87.0	395.0	486.0
TF	XXELL	FLY_BY	3.72	39.34	19992.64	280.0	5.0	87.0	395.0	486.0	1.27	177.42	17613.98	280.0	1.0	82.0	379.0	461.0
TF	YUTOO	FLY_BY	1.27	177.42	17613.98	280.0	1.0	82.0	379.0	461.0	2.61	38.73	14455.91	270.0	3.85	76.0	347.0	423.0
TF	TRAVV	FLY_BY	2.61	38.73	14455.91	270.0	3.85	76.0	347.0	423.0	0.09	137.61	12330.84	270.0	1.0	71.0	335.0	406.0
TF	ROKKR	FLY_BY	0.09	137.61	12330.84	270.0	1.0	71.0	335.0	406.0	2.07	10.76	11583.79	250.0	10.89	70.0	307.0	377.0
TF	ZEPPE	FLY_BY	2.07	10.76	11583.79	250.0	10.89	70.0	307.0	377.0	1.92	99.05	9639.97	250.0	1.11	66.0	297.0	363.0
TF	IVINS	FLY_BY	1.92	99.05	9639.97	250.0	1.11	66.0	297.0	363.0	2.52	3.92	8294.41	250.0	25.0	63.0	291.0	354.0
TF	HNTUN	FLY_OVER	2.52	3.92	8294.41	250.0	25.0	63.0	291.0	354.0	0.0		7000.0	250.0	0.0	61.0	285.0	346.0
FM			0.0		7000.0	250.0	0.0	61.0	285.0	346.0			0.0	0.0				

RDHOT:Landing KVN Y ROKKR Obstacle Evaluation

Start Pt	End Pt	Name	Source	AC (H/V (ft) AMSL)	Lat	Long	Height (ft) AMSL	Mnts Area	Pri/Sec Area	ROC (ft)	WCVH (ft)	MOCA (ft)	Min OCS Alt (ft)	Date
RDHOT	PRPLE	TerrainPt_43_RDHOT:Landing KVN Y ROKKR_RDHOT:PRPLE		4E (+- 250/+125)	N35° 02' 09.00"	W119° 45' 39.00"	5108.27	true	P	2000.0		7309	7308.27	11-Apr-2016 09:01:54
PRPLE	XXELL	TerrainPt_14_PRPLE:Landing KVN Y ROKKR_PRPLE:XXELL		4E (+- 250/+125)	N34° 44' 06.00"	W119° 30' 39.00"	5862.86	true	P	2000.0		8063	8062.86	11-Apr-2016 09:01:54
XXELL	YUTOO	TerrainPt_16_PRPLE:Landing KVN Y ROKKR_XXELL:YUTOO		4E (+- 250/+125)	N34° 37' 54.00"	W119° 16' 54.00"	7496.72	true	P	2000.0		9697	9696.72	11-Apr-2016 09:01:54
YUTOO	TRAVV	TerrainPt_1_PRPLE:Landing KVN Y ROKKR_YUTOO:TRAVV		4E (+- 250/+125)	N34° 37' 54.00"	W119° 16' 54.00"	7496.72	true	P	2000.0		9697	9696.72	11-Apr-2016 09:01:54
TRAVV	ROKKR	TerrainPt_0_PRPLE:Landing KVN Y ROKKR_TRAVV:ROKKR		4E (+- 250/+125)	N34° 36' 21.00"	W119° 07' 42.00"	6902.89	true	P	2000.0		9103	9102.89	11-Apr-2016 09:01:54
ROKKR	ZEPPE	TerrainPt_34_HIHWY:Landing KVN Y ROKKR_ROKKR:ZEPPE		4E (+- 250/+125)	N34° 30' 36.00"	W119° 04' 33.00"	6702.76	true	P	2000.0		8903	8902.76	11-Apr-2016 09:01:54
ZEPPE	IVINS	TerrainPt_13_HIHWY:Landing KVN Y ROKKR_ZEPPE:IVINS		4E (+- 250/+125)	N34° 27' 30.00"	W119° 00' 33.00"	5000.0	true	P	2000.0		7200	7200.0	11-Apr-2016 09:01:54
IVINS	HNTUN	TerrainPt_28_HIHWY:Landing KVN Y ROKKR_IVINS:HNTUN		4E (+- 250/+125)	N34° 28' 06.00"	W118° 52' 45.00"	3959.97	true	P	2000.0		6160	6159.97	11-Apr-2016 09:01:54

RDHOT:Landing KVN Y ROKKR Criteria Failures

No failures.

Route Evaluation for REBRG:Landing KVN Y ROKKR

REBRG:Landing KVN Y ROKKR Evaluation Results Part 1/2

Leg Tp	End Pt	Turn Tp	Alt Restr	Alt Restr 2	Spd Restr	Turn Ang	Leg Length	Min Seg Length
IF	REBRG						0.0	0.0
TF	MMTLY	FLY_BY				15.87	19.63	7.54
TF	CRUUE	FLY_BY				6.97	10.98	7.54
TF	EEAZY	FLY_BY	+24000.0	-29000.0	280.0	24.32	15.49	9.93
TF	HIHWY	FLY_BY	-22000.0		280.0	9.51	18.13	9.93
TF	MAIDD	FLY_BY	-19000.0			0.51	8.4	1.0
TF	PEPRZ	FLY_BY	-16000.0		270.0	0.18	12.37	1.0
TF	HEVVY	FLY_BY	-15000.0			0.3	6.16	1.0
TF	ROKKR	FLY_BY	+11000.0	-12000.0	250.0	9.28	3.0	1.0
TF	ZEPPE	FLY_BY	+9000.0	-10000.0		2.22	7.78	1.0
TF	IVINS	FLY_BY	+8000.0			65.56	5.38	2.52
TF	HNTUN	FLY_OVER	7000.0				5.18	2.52
FM							0.0	0.0

REBRG:Landing KVN Y ROKKR Evaluation Results Part 2/2

Leg Tp	End Pt	Turn Tp	DTA1	DTA1 Turn Rad	DTA1 Turn Alt	DTA1 Turn Spd	DTA1 Bank Ang	DTA1 Tailwind	DTA1 True Airspd	DTA1 vGround	DTA2	DTA2 Turn Rad	DTA2 Turn Alt	DTA2 Turn Spd	DTA2 Bank Ang	DTA2 Tailwind	DTA2 True Airspd	DTA2 vGround
IF	REBRG				0.0	0.0							0.0	0.0				
TF	MMTLY	FLY_BY	0.0		35523.96	300.0	0.0	117.0	563.0	570.0	7.54	54.11	30617.26	300.0	5.0	108.0	512.0	570.0
TF	CRUUE	FLY_BY	7.54	54.11	30617.26	300.0	5.0	108.0	512.0	570.0	3.23	52.98	27872.7	300.0	5.0	102.0	487.0	564.0
TF	EEAZY	FLY_BY	3.23	52.98	27872.7	300.0	5.0	102.0	487.0	564.0	9.93	46.08	24000.0	280.0	5.0	95.0	424.0	526.0
TF	HIHWY	FLY_BY	9.93	46.08	24000.0	280.0	5.0	95.0	424.0	526.0	3.27	39.38	19066.38	280.0	4.75	85.0	389.0	474.0
TF	MAIDD	FLY_BY	3.27	39.38	19066.38	280.0	4.75	85.0	389.0	474.0	0.77	173.59	16966.39	280.0	1.0	81.0	375.0	456.0
TF	PEPRZ	FLY_BY	0.77	173.59	16966.39	280.0	1.0	81.0	375.0	456.0	0.22	145.86	13873.54	270.0	1.0	74.0	344.0	418.0
TF	HEVVY	FLY_BY	0.22	145.86	13873.54	270.0	1.0	74.0	344.0	418.0	0.36	137.61	12334.44	270.0	1.0	71.0	335.0	406.0
TF	ROKKR	FLY_BY	0.36	137.61	12334.44	270.0	1.0	71.0	335.0	406.0	2.07	25.53	11583.79	250.0	4.64	70.0	307.0	377.0
TF	ZEPPE	FLY_BY	2.07	25.53	11583.79	250.0	4.64	70.0	307.0	377.0	1.92	99.05	9639.97	250.0	1.11	66.0	297.0	363.0
TF	IVINS	FLY_BY	1.92	99.05	9639.97	250.0	1.11	66.0	297.0	363.0	2.52	3.92	8294.41	250.0	25.0	63.0	291.0	354.0
TF	HNTUN	FLY_OVER	2.52	3.92	8294.41	250.0	25.0	63.0	291.0	354.0	0.0		7000.0	250.0	0.0	61.0	285.0	346.0
FM			0.0		7000.0	250.0	0.0	61.0	285.0	346.0			0.0	0.0				

ROKKR RNAV

REBRG:Landing KVNY ROKKR Obstacle Evaluation

Start Pt	End Pt	Name	Source	AC (H/V) (ft) AMSL)	Lat	Long	Height (ft) AMSL	Mnts Area	Pri/Sec Area	ROC (ft)	WCVH (ft)	MOCA (ft)	Min OCS Alt (ft)	Date
REBRG	MMTLY	TerrainPt_39_REBRG:Landing KVNY ROKKR_REBRG:MMTLY		4E (+-250/+125)	N35° 38' 57.00"	W119° 45' 27.00"	465.88	true	P	2000.0		2666	2665.88	11-Apr-2016 09:01:54
MMTLY	CRUUE	TerrainPt_21_REBRG:Landing KVNY ROKKR_MMTLY:CRUUE		4E (+-250/+125)	N35° 25' 57.00"	W119° 43' 30.00"	685.7	true	P	2000.0		2886	2885.7	11-Apr-2016 09:01:54
CRUUE	EEAZY	TerrainPt_24_REBRG:Landing KVNY ROKKR_CRUUE:EEAZY		4E (+-250/+125)	N35° 10' 15.00"	W119° 38' 00.00"	3559.71	true	P	2000.0		5760	5759.71	11-Apr-2016 09:01:54
EEAZY	HIHWY	TerrainPt_18_REBRG:Landing KVNY ROKKR_EEAZY:HIHWY		4E (+-250/+125)	N34° 55' 12.00"	W119° 24' 21.00"	4501.31	true	P	2000.0		6702	6701.31	11-Apr-2016 09:01:54
HIHWY	MAIDD	TerrainPt_51_HIHWY:Landing KVNY ROKKR_HIHWY:MAIDD		4E (+-250/+125)	N34° 52' 09.00"	W119° 11' 24.00"	7162.07	true	P	2000.0		9363	9362.07	11-Apr-2016 09:01:54
MAIDD	PEPRZ	TerrainPt_0_HIHWY:Landing KVNY ROKKR_MAIDD:PEPRZ		4E (+-250/+125)	N34° 48' 48.00"	W119° 10' 03.00"	8815.62	true	P	2000.0		11016	11015.62	11-Apr-2016 09:01:54
PEPRZ	HEVVY	TerrainPt_19_HIHWY:Landing KVNY ROKKR_PEPRZ:HEVVY		4E (+-250/+125)	N34° 38' 24.00"	W119° 12' 39.00"	6938.98	true	P	2000.0		9139	9138.98	11-Apr-2016 09:01:54
HEVVY	ROKKR	TerrainPt_0_HIHWY:Landing KVNY ROKKR_HEVVY:ROKKR		4E (+-250/+125)	N34° 36' 21.00"	W119° 07' 42.00"	6902.89	true	P	2000.0		9103	9102.89	11-Apr-2016 09:01:54
ROKKR	ZEPPE	TerrainPt_34_HIHWY:Landing KVNY ROKKR_ROKKR:ZEPPE		4E (+-250/+125)	N34° 30' 36.00"	W119° 04' 33.00"	6702.76	true	P	2000.0		8903	8902.76	11-Apr-2016 09:01:54
ZEPPE	IVINS	TerrainPt_13_HIHWY:Landing KVNY ROKKR_ZEPPE:IVINS		4E (+-250/+125)	N34° 27' 30.00"	W119° 00' 33.00"	5000.0	true	P	2000.0		7200	7200.0	11-Apr-2016 09:01:54
IVINS	HNTUN	TerrainPt_28_HIHWY:Landing KVNY ROKKR_IVINS:HNTUN		4E (+-250/+125)	N34° 28' 06.00"	W118° 52' 45.00"	3959.97	true	P	2000.0		6160	6159.97	11-Apr-2016 09:01:54

REBRG:Landing KVNY ROKKR Criteria Failures

No failures.

Evaluation Input

Name:	RS Results Landing KVNY ROKKR
Project:	BUR_VNY ROKKR STAR paperwork_20151013
Last evaluated:	11-Apr-2016 09:00:52
Evaluated obstacles?:	true
Obstacle Database:	AIRNAV2
Evaluated terrain?:	true
Worst Case Vegetation Height (ft) AGL:	0

Terrain Information

Terrain Extractor Name	Extractor Location	Extractor Type	Resolution
DTED 3 Sec	C:\Program Files (x86)\TARGETS\data\DTED-3Sec	org.mitre.caasd.terrain.DTEExtractor	3.0

ROKKR RNAV

Procedure Criteria Failures

No failures.

Evaluation Notes and Warnings

CEW14: In the route beginning at HIHWY and ending at HNTUN, on the leg from IVINS to HNTUN an alternative OEA construction method was applied.
 CEW14: In the route beginning at PRPLE and ending at HNTUN, on the leg from TRAVV to ROKKR an alternative OEA construction method was applied.
 CEW14: In the route beginning at PRPLE and ending at HNTUN, on the leg from IVINS to HNTUN an alternative OEA construction method was applied.
 CEW14: In the route beginning at RDHOT and ending at HNTUN, on the leg from TRAVV to ROKKR an alternative OEA construction method was applied.
 CEW14: In the route beginning at RDHOT and ending at HNTUN, on the leg from IVINS to HNTUN an alternative OEA construction method was applied.
 CEW14: In the route beginning at REBRG and ending at HNTUN, on the leg from IVINS to HNTUN an alternative OEA construction method was applied.

Obstacles Requiring Accuracy Code Verification

None.

RS Results ROKKR

Last Evaluation: 11-Apr-2016 08:57:40
 Reference Software Version: 1.5.3

Route Evaluation for HIHWY:ROKKR:KBUR:RW08

HIHWY:ROKKR:KBUR:RW08 Evaluation Results Part 1/2

Leg Tp	End Pt	Turn Tp	Alt Restr	Alt Restr 2	Spd Restr	Turn Ang	Leg Length	Min Seg Length
IF	HIHWY		-22000.0		280.0		0.0	0.0
TF	MAIDD	FLY_BY	-19000.0			0.51	8.4	1.0
TF	PEPRZ	FLY_BY	-16000.0		270.0	0.18	12.37	1.0
TF	HEVVY	FLY_BY	-15000.0			0.3	6.16	1.0
TF	ROKKR	FLY_BY	+11000.0	-12000.0	250.0	9.28	3.0	1.0
TF	ZEPPE	FLY_BY	+9000.0	-10000.0		2.22	7.78	1.0
TF	IVINS	FLY_BY	+8000.0			2.96	5.38	1.0
TF	MIKEI	FLY_BY	7000.0			23.91	8.5	1.74

ROKKR RNAV

HIHWY:ROKKR:KBUR:RW08 Evaluation Results Part 2/2

Leg Tp	End Pt	Turn Tp	DTA1	DTA1 Turn Rad	DTA1 Turn Alt	DTA1 Turn Spd	DTA1 Bank Ang	DTA1 Tailwind	DTA1 True Airspd	DTA1 vGround	DTA2	DTA2 Turn Rad	DTA2 Turn Alt	DTA2 Turn Spd	DTA2 Bank Ang	DTA2 Tailwind	DTA2 True Airspd	DTA2 vGround
IF	HIHWY				0.0	0.0							0.0	0.0				
TF	MAIDD	FLY_BY	0.0		19426.4	280.0	0.0	85.0	391.0	476.0	0.77	175.12	17326.41	280.0	1.0	81.0	377.0	458.0
TF	PEPRZ	FLY_BY	0.77	175.12	17326.41	280.0	1.0	81.0	377.0	458.0	0.23	147.96	14233.56	270.0	1.0	75.0	346.0	421.0
TF	HEVVY	FLY_BY	0.23	147.96	14233.56	270.0	1.0	75.0	346.0	421.0	0.37	139.65	12694.47	270.0	1.0	72.0	337.0	409.0
TF	ROKKR	FLY_BY	0.37	139.65	12694.47	270.0	1.0	72.0	337.0	409.0	2.09	25.8	11943.82	250.0	4.64	71.0	308.0	379.0
TF	ZEPPE	FLY_BY	2.09	25.8	11943.82	250.0	4.64	71.0	308.0	379.0	1.95	100.7	10000.0	250.0	1.11	67.0	299.0	366.0
TF	IVINS	FLY_BY	1.95	100.7	10000.0	250.0	1.11	67.0	299.0	366.0	1.89	73.16	9125.0	250.0	1.48	65.0	295.0	360.0
TF	MIKEI	FLY_BY	1.89	73.16	9125.0	250.0	1.48	65.0	295.0	360.0	1.74	8.24	7000.0	250.0	11.95	61.0	285.0	346.0

HIHWY:ROKKR:KBUR:RW08 Obstacle Evaluation

Start Pt	End Pt	Name	Source	AC (H/V (ft) AMSL)	Lat	Long	Height (ft) AMSL	Mnts Area	Pri/Sec Area	ROC (ft)	WCVH (ft)	MOCA (ft)	Min OCS Alt (ft)	Date
HIHWY	MAIDD	TerrainPt_51_HIHWY:ROKKR:KBUR:RW08_HIHWY:MAIDD		4E (+-250/+125)	N34° 52' 09.00"	W119° 11' 24.00"	7162.07	true	P	2000.0		9363	9362.07	11-Apr-2016 09:00:51
MAIDD	PEPRZ	TerrainPt_0_HIHWY:ROKKR:KBUR:RW08_MAIDD:PEPRZ		4E (+-250/+125)	N34° 48' 48.00"	W119° 10' 03.00"	8815.62	true	P	2000.0		11016	11015.62	11-Apr-2016 09:00:51
PEPRZ	HEVVY	TerrainPt_19_HIHWY:ROKKR:KBUR:RW08_PEPRZ:HEVVY		4E (+-250/+125)	N34° 38' 24.00"	W119° 12' 39.00"	6938.98	true	P	2000.0		9139	9138.98	11-Apr-2016 09:00:51
HEVVY	ROKKR	TerrainPt_0_HIHWY:ROKKR:KBUR:RW08_HEVVY:ROKKR		4E (+-250/+125)	N34° 36' 21.00"	W119° 07' 42.00"	6902.89	true	P	2000.0		9103	9102.89	11-Apr-2016 09:00:51
ROKKR	ZEPPE	TerrainPt_34_HIHWY:ROKKR:KBUR:RW08_ROKKR:ZEPPE		4E (+-250/+125)	N34° 30' 36.00"	W119° 04' 33.00"	6702.76	true	P	2000.0		8903	8902.76	11-Apr-2016 09:00:51
ZEPPE	IVINS	TerrainPt_5_HIHWY:ROKKR:KBUR:RW08_ZEPPE:IVINS		4E (+-250/+125)	N34° 27' 30.00"	W119° 00' 33.00"	5000.0	true	P	2000.0		7200	7200.0	11-Apr-2016 09:00:51
IVINS	MIKEI	TerrainPt_13_HIHWY:ROKKR:KBUR:RW08_IVINS:MIKEI		4E (+-250/+125)	N34° 21' 27.00"	W118° 51' 00.00"	2316.27	true	P	2000.0		4517	4516.27	11-Apr-2016 09:00:51

HIHWY:ROKKR:KBUR:RW08 Criteria Failures

No failures.

Route Evaluation for HIHWY:ROKKR:KBUR:RW15

HIHWY:ROKKR:KBUR:RW15 Evaluation Results Part 1/2

Leg Tp	End Pt	Turn Tp	Alt Restr	Alt Restr 2	Spd Restr	Turn Ang	Leg Length	Min Seg Length
IF	HIHWY		-22000.0		280.0		0.0	0.0
TF	MAIDD	FLY_BY	-19000.0			0.51	8.4	1.0
TF	PEPRZ	FLY_BY	-16000.0		270.0	0.18	12.37	1.0
TF	HEVVY	FLY_BY	-15000.0			0.3	6.16	1.0
TF	ROKKR	FLY_BY	+11000.0	-12000.0	250.0	9.28	3.0	1.0
TF	ZEPPE	FLY_BY	+9000.0	-10000.0		2.22	7.78	1.0
TF	IVINS	FLY_BY	+8000.0			45.63	5.38	1.86
TF	MAURK	FLY_OVER	6000.0				10.58	1.86
FM							0.0	0.0

HIHWY:ROKKR:KBUR:RW15 Evaluation Results Part 2/2

Leg Tp	End Pt	Turn Tp	DTA1	DTA1 Turn Rad	DTA1 Turn Alt	DTA1 Turn Spd	DTA1 Bank Ang	DTA1 Tailwind	DTA1 True Airspd	DTA1 vGround	DTA2	DTA2 Turn Rad	DTA2 Turn Alt	DTA2 Turn Spd	DTA2 Bank Ang	DTA2 Tailwind	DTA2 True Airspd	DTA2 vGround
IF	HIHWY				0.0	0.0							0.0	0.0				
TF	MAIDD	FLY_BY	0.0		19418.12	280.0	0.0	85.0	391.0	476.0	0.77	175.12	17318.12	280.0	1.0	81.0	377.0	458.0
TF	PEPRZ	FLY_BY	0.77	175.12	17318.12	280.0	1.0	81.0	377.0	458.0	0.23	147.96	14225.28	270.0	1.0	75.0	346.0	421.0
TF	HEVVY	FLY_BY	0.23	147.96	14225.28	270.0	1.0	75.0	346.0	421.0	0.37	139.65	12686.18	270.0	1.0	72.0	337.0	409.0
TF	ROKKR	FLY_BY	0.37	139.65	12686.18	270.0	1.0	72.0	337.0	409.0	2.09	25.8	11935.53	250.0	4.64	71.0	308.0	379.0
TF	ZEPPE	FLY_BY	2.09	25.8	11935.53	250.0	4.64	71.0	308.0	379.0	1.95	100.7	9991.71	250.0	1.11	67.0	299.0	366.0
TF	IVINS	FLY_BY	1.95	100.7	9991.71	250.0	1.11	67.0	299.0	366.0	1.86	4.41	8646.14	250.0	22.82	64.0	293.0	357.0
TF	MAURK	FLY_OVER	1.86	4.41	8646.14	250.0	22.82	64.0	293.0	357.0	0.0		6000.0	250.0	0.0	59.0	281.0	340.0
FM			0.0		6000.0	250.0	0.0	59.0	281.0	340.0			0.0	0.0				

HIHWY:ROKKR:KBUR:RW15 Obstacle Evaluation

Start Pt	End Pt	Name	Source	AC (H/V (ft) AMSL)	Lat	Long	Height (ft) AMSL	Mnts Area	Pri/Sec Area	ROC (ft)	WCVH (ft)	MOCA (ft)	Min OCS Alt (ft)	Date
HIHWY	MAIDD	TerrainPt_51_HIHWY:ROKKR:KBUR:RW08_HIHWY:MAIDD		4E (+-250/+125)	N34° 52' 09.00"	W119° 11' 24.00"	7162.07	true	P	2000.0		9363	9362.07	11-Apr-2016 09:00:51
MAIDD	PEPRZ	TerrainPt_0_HIHWY:ROKKR:KBUR:RW08_MAIDD:PEPRZ		4E (+-250/+125)	N34° 48' 48.00"	W119° 10' 03.00"	8815.62	true	P	2000.0		11016	11015.62	11-Apr-2016 09:00:51
PEPRZ	HEVVY	TerrainPt_19_HIHWY:ROKKR:KBUR:RW08_PEPRZ:HEVVY		4E (+-250/+125)	N34° 38' 24.00"	W119° 12' 39.00"	6938.98	true	P	2000.0		9139	9138.98	11-Apr-2016 09:00:51
HEVVY	ROKKR	TerrainPt_0_HIHWY:ROKKR:KBUR:RW08_HEVVY:ROKKR		4E (+-250/+125)	N34° 36' 21.00"	W119° 07' 42.00"	6902.89	true	P	2000.0		9103	9102.89	11-Apr-2016 09:00:51
ROKKR	ZEPPE	TerrainPt_34_HIHWY:ROKKR:KBUR:RW08_ROKKR:ZEPPE		4E (+-250/+125)	N34° 30' 36.00"	W119° 04' 33.00"	6702.76	true	P	2000.0		8903	8902.76	11-Apr-2016 09:00:51
ZEPPE	IVINS	TerrainPt_5_HIHWY:ROKKR:KBUR:RW08_ZEPPE:IVINS		4E (+-250/+125)	N34° 27' 30.00"	W119° 00' 33.00"	5000.0	true	P	2000.0		7200	7200.0	11-Apr-2016 09:00:51
IVINS	MAURK	TerrainPt_22_HIHWY:ROKKR:KBUR:RW15_IVINS:MAURK		4E (+-250/+125)	N34° 28' 24.00"	W118° 51' 51.00"	4416.01	true	S	1160.3		5777	5776.31	11-Apr-2016 09:00:51

HIHWY:ROKKR:KBUR:RW15 Criteria Failures

No failures.

Route Evaluation for HIHWY:ROKKR:KBUR:RW33

HIHWY:ROKKR:KBUR:RW33 Evaluation Results Part 1/2

Leg Tp	End Pt	Turn Tp	Alt Restr	Alt Restr 2	Spd Restr	Turn Ang	Leg Length	Min Seg Length
IF	HIHWY		-22000.0		280.0		0.0	0.0
TF	MAIDD	FLY_BY	-19000.0			0.51	8.4	1.0
TF	PEPRZ	FLY_BY	-16000.0		270.0	0.18	12.37	1.0
TF	HEVVY	FLY_BY	-15000.0			0.3	6.16	1.0
TF	ROKKR	FLY_BY	+11000.0	-12000.0	250.0	9.28	3.0	1.0
TF	ZEPPE	FLY_BY	+9000.0	-10000.0		2.22	7.78	1.0
TF	IVINS	FLY_BY	+8000.0			2.96	5.38	1.0
TF	MIKEI	FLY_BY	7000.0			0.0	8.5	1.0
TF	EHUNT	FLY_OVER	6000.0				6.0	1.0
FM							0.0	0.0

HIHWY:ROKKR:KBUR:RW33 Evaluation Results Part 2/2

Leg Tp	End Pt	Turn Tp	DTA1	DTA1 Turn Rad	DTA1 Turn Alt	DTA1 Turn Spd	DTA1 Bank Ang	DTA1 Tailwind	DTA1 True Airspd	DTA1 vGround	DTA2	DTA2 Turn Rad	DTA2 Turn Alt	DTA2 Turn Spd	DTA2 Bank Ang	DTA2 Tailwind	DTA2 True Airspd	DTA2 vGround
IF	HIHWY				0.0	0.0							0.0	0.0				
TF	MAIDD	FLY_BY	0.0		19426.4	280.0	0.0	85.0	391.0	476.0	0.77	175.12	17326.41	280.0	1.0	81.0	377.0	458.0
TF	PEPRZ	FLY_BY	0.77	175.12	17326.41	280.0	1.0	81.0	377.0	458.0	0.23	147.96	14233.56	270.0	1.0	75.0	346.0	421.0
TF	HEVVY	FLY_BY	0.23	147.96	14233.56	270.0	1.0	75.0	346.0	421.0	0.37	139.65	12694.47	270.0	1.0	72.0	337.0	409.0
TF	ROKKR	FLY_BY	0.37	139.65	12694.47	270.0	1.0	72.0	337.0	409.0	2.09	25.8	11943.82	250.0	4.64	71.0	308.0	379.0
TF	ZEPPE	FLY_BY	2.09	25.8	11943.82	250.0	4.64	71.0	308.0	379.0	1.95	100.7	10000.0	250.0	1.11	67.0	299.0	366.0
TF	IVINS	FLY_BY	1.95	100.7	10000.0	250.0	1.11	67.0	299.0	366.0	1.89	73.16	9125.0	250.0	1.48	65.0	295.0	360.0
TF	MIKEI	FLY_BY	1.89	73.16	9125.0	250.0	1.48	65.0	295.0	360.0	0.0		7000.0	250.0	0.0	61.0	285.0	346.0
TF	EHUNT	FLY_OVER	0.0		7000.0	250.0	0.0	61.0	285.0	346.0	0.0		6000.0	250.0	0.0	59.0	281.0	340.0
FM			0.0		6000.0	250.0	0.0	59.0	281.0	340.0			0.0	0.0				

HIHWY:ROKKR:KBUR:RW33 Obstacle Evaluation

Start Pt	End Pt	Name	Source	AC (H/V (ft) AMSL)	Lat	Long	Height (ft) AMSL	Mnts Area	Pri/Sec Area	ROC (ft)	WCVH (ft)	MOCA (ft)	Min OCS Alt (ft)	Date
HIHWY	MAIDD	TerrainPt_51_HIHWY:ROKKR:KBUR:RW08_HIHWY:MAIDD		4E (+-250/+125)	N34° 52' 09.00"	W119° 11' 24.00"	7162.07	true	P	2000.0		9363	9362.07	11-Apr-2016 09:00:51
MAIDD	PEPRZ	TerrainPt_0_HIHWY:ROKKR:KBUR:RW08_MAIDD:PEPRZ		4E (+-250/+125)	N34° 48' 48.00"	W119° 10' 03.00"	8815.62	true	P	2000.0		11016	11015.62	11-Apr-2016 09:00:51
PEPRZ	HEVVY	TerrainPt_19_HIHWY:ROKKR:KBUR:RW08_PEPRZ:HEVVY		4E (+-250/+125)	N34° 38' 24.00"	W119° 12' 39.00"	6938.98	true	P	2000.0		9139	9138.98	11-Apr-2016 09:00:51
HEVVY	ROKKR	TerrainPt_0_HIHWY:ROKKR:KBUR:RW08_HEVVY:ROKKR		4E (+-250/+125)	N34° 36' 21.00"	W119° 07' 42.00"	6902.89	true	P	2000.0		9103	9102.89	11-Apr-2016 09:00:51
ROKKR	ZEPPE	TerrainPt_34_HIHWY:ROKKR:KBUR:RW08_ROKKR:ZEPPE		4E (+-250/+125)	N34° 30' 36.00"	W119° 04' 33.00"	6702.76	true	P	2000.0		8903	8902.76	11-Apr-2016 09:00:51
ZEPPE	IVINS	TerrainPt_5_HIHWY:ROKKR:KBUR:RW08_ZEPPE:IVINS		4E (+-250/+125)	N34° 27' 30.00"	W119° 00' 33.00"	5000.0	true	P	2000.0		7200	7200.0	11-Apr-2016 09:00:51
IVINS	MIKEI	TerrainPt_13_HIHWY:ROKKR:KBUR:RW08_IVINS:MIKEI		4E (+-250/+125)	N34° 21' 27.00"	W118° 51' 00.00"	2316.27	true	P	2000.0		4517	4516.27	11-Apr-2016 09:00:51
MIKEI	EHUNT	TerrainPt_0_HIHWY:ROKKR:KBUR:RW33_MIKEI:EHUNT		4E (+-250/+125)	N34° 12' 15.00"	W118° 46' 33.00"	2391.73	true	P	2000.0		4592	4591.73	11-Apr-2016 09:00:51

HIHWY:ROKKR:KBUR:RW33 Criteria Failures

No failures.

Route Evaluation for PRPLE:ROKKR:KBUR:RW08

PRPLE:ROKKR:KBUR:RW08 Evaluation Results Part 1/2

Leg Tp	End Pt	Turn Tp	Alt Restr	Alt Restr 2	Spd Restr	Turn Ang	Leg Length	Min Seg Length
IF	PRPLE		-22000.0		280.0		0.0	0.0
TF	XXELL	FLY_BY	-19000.0			0.82	9.51	1.0
TF	YUTOO	FLY_BY	-16000.0		270.0	7.7	12.63	1.0
TF	TRAVV	FLY_BY	-15000.0			0.07	8.5	1.0
TF	ROKKR	FLY_BY	+11000.0	-12000.0	250.0	21.78	2.99	2.09
TF	ZEPPE	FLY_BY	+9000.0	-10000.0		2.22	7.78	2.09
TF	IVINS	FLY_BY	+8000.0			2.96	5.38	1.0
TF	MIKEI	FLY_BY	7000.0			23.91	8.5	1.74

PRPLE:ROKKR:KBUR:RW08 Evaluation Results Part 2/2

Leg Tp	End Pt	Turn Tp	DTA1	DTA1 Turn Rad	DTA1 Turn Alt	DTA1 Turn Spd	DTA1 Bank Ang	DTA1 Tailwind	DTA1 True Airspd	DTA1 vGround	DTA2	DTA2 Turn Rad	DTA2 Turn Alt	DTA2 Turn Spd	DTA2 Bank Ang	DTA2 Tailwind	DTA2 True Airspd	DTA2 vGround
IF	PRPLE				0.0	0.0							0.0	0.0				
TF	XXELL	FLY_BY	0.0		20352.66	280.0	0.0	87.0	397.0	489.0	1.29	180.51	17974.01	280.0	1.0	83.0	382.0	465.0
TF	YUTOO	FLY_BY	1.29	180.51	17974.01	280.0	1.0	83.0	382.0	465.0	2.63	39.1	14815.94	270.0	3.85	76.0	349.0	425.0
TF	TRAVV	FLY_BY	2.63	39.1	14815.94	270.0	3.85	76.0	349.0	425.0	0.09	139.65	12690.86	270.0	1.0	72.0	337.0	409.0
TF	ROKKR	FLY_BY	0.09	139.65	12690.86	270.0	1.0	72.0	337.0	409.0	2.09	10.88	11943.82	250.0	10.89	71.0	308.0	379.0
TF	ZEPPE	FLY_BY	2.09	10.88	11943.82	250.0	10.89	71.0	308.0	379.0	1.95	100.7	10000.0	250.0	1.11	67.0	299.0	366.0
TF	IVINS	FLY_BY	1.95	100.7	10000.0	250.0	1.11	67.0	299.0	366.0	1.89	73.16	9125.0	250.0	1.48	65.0	295.0	360.0
TF	MIKEI	FLY_BY	1.89	73.16	9125.0	250.0	1.48	65.0	295.0	360.0	1.74	8.24	7000.0	250.0	11.95	61.0	285.0	346.0

ROKKR RNAV

PRPLE:ROKKR:KBUR:RW08 Obstacle Evaluation

Start Pt	End Pt	Name	Source	AC (H/V (ft) AMSL)	Lat	Long	Height (ft) AMSL	Mnts Area	Pri/Sec Area	ROC (ft)	WCVH (ft)	MOCA (ft)	Min OCS Alt (ft)	Date
PRPLE	XXELL	TerrainPt_14_PRPLE:ROKKR:KBUR:RW08_PRPLE:XXELL		4E (+-250/+125)	N34° 44' 06.00"	W119° 30' 39.00"	5862.86	true	P	2000.0		8063	8062.86	11-Apr-2016 09:00:51
XXELL	YUTOO	TerrainPt_16_PRPLE:ROKKR:KBUR:RW08_XXELL:YUTOO		4E (+-250/+125)	N34° 37' 54.00"	W119° 16' 54.00"	7496.72	true	P	2000.0		9697	9696.72	11-Apr-2016 09:00:51
YUTOO	TRAVV	TerrainPt_1_PRPLE:ROKKR:KBUR:RW08_YUTOO:TRAVV		4E (+-250/+125)	N34° 37' 54.00"	W119° 16' 54.00"	7496.72	true	P	2000.0		9697	9696.72	11-Apr-2016 09:00:51
TRAVV	ROKKR	TerrainPt_0_PRPLE:ROKKR:KBUR:RW08_TRAVV:ROKKR		4E (+-250/+125)	N34° 36' 21.00"	W119° 07' 42.00"	6902.89	true	P	2000.0		9103	9102.89	11-Apr-2016 09:00:51
ROKKR	ZEPPE	TerrainPt_34_HIHWY:ROKKR:KBUR:RW08_ROKKR:ZEPPE		4E (+-250/+125)	N34° 30' 36.00"	W119° 04' 33.00"	6702.76	true	P	2000.0		8903	8902.76	11-Apr-2016 09:00:51
ZEPPE	IVINS	TerrainPt_5_HIHWY:ROKKR:KBUR:RW08_ZEPPE:IVINS		4E (+-250/+125)	N34° 27' 30.00"	W119° 00' 33.00"	5000.0	true	P	2000.0		7200	7200.0	11-Apr-2016 09:00:51
IVINS	MIKEI	TerrainPt_13_HIHWY:ROKKR:KBUR:RW08_IVINS:MIKEI		4E (+-250/+125)	N34° 21' 27.00"	W118° 51' 00.00"	2316.27	true	P	2000.0		4517	4516.27	11-Apr-2016 09:00:51

PRPLE:ROKKR:KBUR:RW08 Criteria Failures

No failures.

Route Evaluation for PRPLE:ROKKR:KBUR:RW15

PRPLE:ROKKR:KBUR:RW15 Evaluation Results Part 1/2

Leg Tp	End Pt	Turn Tp	Alt Restr	Alt Restr 2	Spd Restr	Turn Ang	Leg Length	Min Seg Length
IF	PRPLE		-22000.0		280.0		0.0	0.0
TF	XXELL	FLY_BY	-19000.0			0.82	9.51	1.0
TF	YUTOO	FLY_BY	-16000.0		270.0	7.7	12.63	1.0
TF	TRAVV	FLY_BY	-15000.0			0.07	8.5	1.0
TF	ROKKR	FLY_BY	+11000.0	-12000.0	250.0	21.78	2.99	2.09
TF	ZEPPE	FLY_BY	+9000.0	-10000.0		2.22	7.78	2.09
TF	IVINS	FLY_BY	+8000.0			45.63	5.38	1.86
TF	MAURK	FLY_OVER	6000.0				10.58	1.86
FM							0.0	0.0

PRPLE:ROKKR:KBUR:RW15 Evaluation Results Part 2/2

Leg Tp	End Pt	Turn Tp	DTA1	DTA1 Turn Rad	DTA1 Turn Alt	DTA1 Turn Spd	DTA1 Bank Ang	DTA1 Tailwind	DTA1 True Airspd	DTA1 vGround	DTA2	DTA2 Turn Rad	DTA2 Turn Alt	DTA2 Turn Spd	DTA2 Bank Ang	DTA2 Tailwind	DTA2 True Airspd	DTA2 vGround
IF	PRPLE				0.0	0.0							0.0	0.0				
TF	XXELL	FLY_BY	0.0		20344.37	280.0	0.0	87.0	397.0	489.0	1.29	180.51	17965.72	280.0	1.0	83.0	382.0	465.0
TF	YUTOO	FLY_BY	1.29	180.51	17965.72	280.0	1.0	83.0	382.0	465.0	2.63	39.1	14807.65	270.0	3.85	76.0	349.0	425.0
TF	TRAVV	FLY_BY	2.63	39.1	14807.65	270.0	3.85	76.0	349.0	425.0	0.09	139.65	12682.58	270.0	1.0	72.0	337.0	409.0
TF	ROKKR	FLY_BY	0.09	139.65	12682.58	270.0	1.0	72.0	337.0	409.0	2.09	10.88	11935.53	250.0	10.89	71.0	308.0	379.0
TF	ZEPPE	FLY_BY	2.09	10.88	11935.53	250.0	10.89	71.0	308.0	379.0	1.95	100.7	9991.71	250.0	1.11	67.0	299.0	366.0
TF	IVINS	FLY_BY	1.95	100.7	9991.71	250.0	1.11	67.0	299.0	366.0	1.86	4.41	8646.14	250.0	22.82	64.0	293.0	357.0
TF	MAURK	FLY_OVER	1.86	4.41	8646.14	250.0	22.82	64.0	293.0	357.0	0.0		6000.0	250.0	0.0	59.0	281.0	340.0
FM			0.0		6000.0	250.0	0.0	59.0	281.0	340.0			0.0	0.0				

ROKKR RNAV

PRPLE:ROKKR:KBUR:RW15 Obstacle Evaluation

Start Pt	End Pt	Name	Source	AC (H/V (ft) AMSL)	Lat	Long	Height (ft) AMSL	Mnts Area	Pri/Sec Area	ROC (ft)	WCVH (ft)	MOCA (ft)	Min OCS Alt (ft)	Date
PRPLE	XXELL	TerrainPt_14_PRPLE:ROKKR:KBUR:RW08_PRPLE:XXELL		4E (+-250/+125)	N34° 44' 06.00"	W119° 30' 39.00"	5862.86	true	P	2000.0		8063	8062.86	11-Apr-2016 09:00:51
XXELL	YUTOO	TerrainPt_16_PRPLE:ROKKR:KBUR:RW08_XXELL:YUTOO		4E (+-250/+125)	N34° 37' 54.00"	W119° 16' 54.00"	7496.72	true	P	2000.0		9697	9696.72	11-Apr-2016 09:00:51
YUTOO	TRAVV	TerrainPt_1_PRPLE:ROKKR:KBUR:RW08_YUTOO:TRAVV		4E (+-250/+125)	N34° 37' 54.00"	W119° 16' 54.00"	7496.72	true	P	2000.0		9697	9696.72	11-Apr-2016 09:00:51
TRAVV	ROKKR	TerrainPt_0_PRPLE:ROKKR:KBUR:RW08_TRAVV:ROKKR		4E (+-250/+125)	N34° 36' 21.00"	W119° 07' 42.00"	6902.89	true	P	2000.0		9103	9102.89	11-Apr-2016 09:00:51
ROKKR	ZEPPE	TerrainPt_34_HIHWY:ROKKR:KBUR:RW08_ROKKR:ZEPPE		4E (+-250/+125)	N34° 30' 36.00"	W119° 04' 33.00"	6702.76	true	P	2000.0		8903	8902.76	11-Apr-2016 09:00:51
ZEPPE	IVINS	TerrainPt_5_HIHWY:ROKKR:KBUR:RW08_ZEPPE:IVINS		4E (+-250/+125)	N34° 27' 30.00"	W119° 00' 33.00"	5000.0	true	P	2000.0		7200	7200.0	11-Apr-2016 09:00:51
IVINS	MAURK	TerrainPt_22_HIHWY:ROKKR:KBUR:RW15_IVINS:MAURK		4E (+-250/+125)	N34° 28' 24.00"	W118° 51' 51.00"	4416.01	true	S	1160.3		5777	5776.31	11-Apr-2016 09:00:51

PRPLE:ROKKR:KBUR:RW15 Criteria Failures

No failures.

Route Evaluation for PRPLE:ROKKR:KBUR:RW33

PRPLE:ROKKR:KBUR:RW33 Evaluation Results Part 1/2

Leg Tp	End Pt	Turn Tp	Alt Restr	Alt Restr 2	Spd Restr	Turn Ang	Leg Length	Min Seg Length
IF	PRPLE		-22000.0		280.0		0.0	0.0
TF	XXELL	FLY_BY	-19000.0			0.82	9.51	1.0
TF	YUTOO	FLY_BY	-16000.0		270.0	7.7	12.63	1.0
TF	TRAVV	FLY_BY	-15000.0			0.07	8.5	1.0
TF	ROKKR	FLY_BY	+11000.0	-12000.0	250.0	21.78	2.99	2.09
TF	ZEPPE	FLY_BY	+9000.0	-10000.0		2.22	7.78	2.09
TF	IVINS	FLY_BY	+8000.0			2.96	5.38	1.0
TF	MIKEI	FLY_BY	7000.0			0.0	8.5	1.0
TF	EHUNT	FLY_OVER	6000.0				6.0	1.0
FM							0.0	0.0

PRPLE:ROKKR:KBUR:RW33 Evaluation Results Part 2/2

Leg Tp	End Pt	Turn Tp	DTA1	DTA1 Turn Rad	DTA1 Turn Alt	DTA1 Turn Spd	DTA1 Bank Ang	DTA1 Tailwind	DTA1 True Airspd	DTA1 vGround	DTA2	DTA2 Turn Rad	DTA2 Turn Alt	DTA2 Turn Spd	DTA2 Bank Ang	DTA2 Tailwind	DTA2 True Airspd	DTA2 vGround
IF	PRPLE				0.0	0.0							0.0	0.0				
TF	XXELL	FLY_BY	0.0		20352.66	280.0	0.0	87.0	397.0	489.0	1.29	180.51	17974.01	280.0	1.0	83.0	382.0	465.0
TF	YUTOO	FLY_BY	1.29	180.51	17974.01	280.0	1.0	83.0	382.0	465.0	2.63	39.1	14815.94	270.0	3.85	76.0	349.0	425.0
TF	TRAVV	FLY_BY	2.63	39.1	14815.94	270.0	3.85	76.0	349.0	425.0	0.09	139.65	12690.86	270.0	1.0	72.0	337.0	409.0
TF	ROKKR	FLY_BY	0.09	139.65	12690.86	270.0	1.0	72.0	337.0	409.0	2.09	10.88	11943.82	250.0	10.89	71.0	308.0	379.0
TF	ZEPPE	FLY_BY	2.09	10.88	11943.82	250.0	10.89	71.0	308.0	379.0	1.95	100.7	10000.0	250.0	1.11	67.0	299.0	366.0
TF	IVINS	FLY_BY	1.95	100.7	10000.0	250.0	1.11	67.0	299.0	366.0	1.89	73.16	9125.0	250.0	1.48	65.0	295.0	360.0
TF	MIKEI	FLY_BY	1.89	73.16	9125.0	250.0	1.48	65.0	295.0	360.0	0.0		7000.0	250.0	0.0	61.0	285.0	346.0
TF	EHUNT	FLY_OVER	0.0		7000.0	250.0	0.0	61.0	285.0	346.0	0.0		6000.0	250.0	0.0	59.0	281.0	340.0
FM			0.0		6000.0	250.0	0.0	59.0	281.0	340.0			0.0	0.0				

PRPLE:ROKKR:KBUR:RW33 Obstacle Evaluation

Start Pt	End Pt	Name	Source	AC (H/V (ft) AMSL)	Lat	Long	Height (ft) AMSL	Mnts Area	Pri/Sec Area	ROC (ft)	WCVH (ft)	MOCA (ft)	Min OCS Alt (ft)	Date
PRPLE	XXELL	TerrainPt_14_PRPLE:ROKKR:KBUR:RW08_PRPLE:XXELL		4E (+-250/+125)	N34° 44' 06.00"	W119° 30' 39.00"	5862.86	true	P	2000.0		8063	8062.86	11-Apr-2016 09:00:51
XXELL	YUTOO	TerrainPt_16_PRPLE:ROKKR:KBUR:RW08_XXELL:YUTOO		4E (+-250/+125)	N34° 37' 54.00"	W119° 16' 54.00"	7496.72	true	P	2000.0		9697	9696.72	11-Apr-2016 09:00:51
YUTOO	TRAVV	TerrainPt_1_PRPLE:ROKKR:KBUR:RW08_YUTOO:TRAVV		4E (+-250/+125)	N34° 37' 54.00"	W119° 16' 54.00"	7496.72	true	P	2000.0		9697	9696.72	11-Apr-2016 09:00:51
TRAVV	ROKKR	TerrainPt_0_PRPLE:ROKKR:KBUR:RW08_TRAVV:ROKKR		4E (+-250/+125)	N34° 36' 21.00"	W119° 07' 42.00"	6902.89	true	P	2000.0		9103	9102.89	11-Apr-2016 09:00:51
ROKKR	ZEPPE	TerrainPt_34_HIHWY:ROKKR:KBUR:RW08_ROKKR:ZEPPE		4E (+-250/+125)	N34° 30' 36.00"	W119° 04' 33.00"	6702.76	true	P	2000.0		8903	8902.76	11-Apr-2016 09:00:51
ZEPPE	IVINS	TerrainPt_5_HIHWY:ROKKR:KBUR:RW08_ZEPPE:IVINS		4E (+-250/+125)	N34° 27' 30.00"	W119° 00' 33.00"	5000.0	true	P	2000.0		7200	7200.0	11-Apr-2016 09:00:51
IVINS	MIKEI	TerrainPt_13_HIHWY:ROKKR:KBUR:RW08_IVINS:MIKEI		4E (+-250/+125)	N34° 21' 27.00"	W118° 51' 00.00"	2316.27	true	P	2000.0		4517	4516.27	11-Apr-2016 09:00:51
MIKEI	EHUNT	TerrainPt_0_HIHWY:ROKKR:KBUR:RW33_MIKEI:EHUNT		4E (+-250/+125)	N34° 12' 15.00"	W118° 46' 33.00"	2391.73	true	P	2000.0		4592	4591.73	11-Apr-2016 09:00:51

PRPLE:ROKKR:KBUR:RW33 Criteria Failures

No failures.

Route Evaluation for RDHOT:ROKKR:KBUR:RW08

RDHOT:ROKKR:KBUR:RW08 Evaluation Results Part 1/2

Leg Tp	End Pt	Turn Tp	Alt Restr	Alt Restr 2	Spd Restr	Turn Ang	Leg Length	Min Seg Length
IF	RDHOT						0.0	0.0
TF	PRPLE	FLY_BY	-22000.0		280.0	10.79	56.37	3.76
TF	XXELL	FLY_BY	-19000.0			0.82	9.51	3.76
TF	YUTOO	FLY_BY	-16000.0		270.0	7.7	12.63	1.0
TF	TRAVV	FLY_BY	-15000.0			0.07	8.5	1.0
TF	ROKKR	FLY_BY	+11000.0	-12000.0	250.0	21.78	2.99	2.09
TF	ZEPPE	FLY_BY	+9000.0	-10000.0		2.22	7.78	2.09
TF	IVINS	FLY_BY	+8000.0			2.96	5.38	1.0
TF	MIKEI	FLY_BY	7000.0			23.91	8.5	1.74

RDHOT:ROKKR:KBUR:RW08 Evaluation Results Part 2/2

Leg Tp	End Pt	Turn Tp	DTA1	DTA1 Turn Rad	DTA1 Turn Alt	DTA1 Turn Spd	DTA1 Bank Ang	DTA1 Tailwind	DTA1 True Airspd	DTA1 vGround	DTA2	DTA2 Turn Rad	DTA2 Turn Alt	DTA2 Turn Spd	DTA2 Bank Ang	DTA2 Tailwind	DTA2 True Airspd	DTA2 vGround
IF	RDHOT				0.0	0.0							0.0	0.0				
TF	PRPLE	FLY_BY	0.0		34444.7	300.0	0.0	115.0	551.0	570.0	3.76	39.83	20352.66	280.0	5.0	87.0	397.0	489.0
TF	XXELL	FLY_BY	3.76	39.83	20352.66	280.0	5.0	87.0	397.0	489.0	1.29	180.51	17974.01	280.0	1.0	83.0	382.0	465.0
TF	YUTOO	FLY_BY	1.29	180.51	17974.01	280.0	1.0	83.0	382.0	465.0	2.63	39.1	14815.94	270.0	3.85	76.0	349.0	425.0
TF	TRAVV	FLY_BY	2.63	39.1	14815.94	270.0	3.85	76.0	349.0	425.0	0.09	139.65	12690.86	270.0	1.0	72.0	337.0	409.0
TF	ROKKR	FLY_BY	0.09	139.65	12690.86	270.0	1.0	72.0	337.0	409.0	2.09	10.88	11943.82	250.0	10.89	71.0	308.0	379.0
TF	ZEPPE	FLY_BY	2.09	10.88	11943.82	250.0	10.89	71.0	308.0	379.0	1.95	100.7	10000.0	250.0	1.11	67.0	299.0	366.0
TF	IVINS	FLY_BY	1.95	100.7	10000.0	250.0	1.11	67.0	299.0	366.0	1.89	73.16	9125.0	250.0	1.48	65.0	295.0	360.0
TF	MIKEI	FLY_BY	1.89	73.16	9125.0	250.0	1.48	65.0	295.0	360.0	1.74	8.24	7000.0	250.0	11.95	61.0	285.0	346.0

RDHOT:ROKKR:KBUR:RW08 Obstacle Evaluation

Start Pt	End Pt	Name	Source	AC (H/V (ft) AMSL)	Lat	Long	Height (ft) AMSL	Mnts Area	Pri/Sec Area	ROC (ft)	WCVH (ft)	MOCA (ft)	Min OCS Alt (ft)	Date
RDHOT	PRPLE	TerrainPt_43_RDHOT:ROKKR:KBUR:RW08_RDHOT:PRPLE		4E (+-250/+125)	N35° 02' 09.00"	W119° 45' 39.00"	5108.27	true	P	2000.0		7309	7308.27	11-Apr-2016 09:00:51
PRPLE	XXELL	TerrainPt_14_PRPLE:ROKKR:KBUR:RW08_PRPLE:XXELL		4E (+-250/+125)	N34° 44' 06.00"	W119° 30' 39.00"	5862.86	true	P	2000.0		8063	8062.86	11-Apr-2016 09:00:51
XXELL	YUTOO	TerrainPt_16_PRPLE:ROKKR:KBUR:RW08_XXELL:YUTOO		4E (+-250/+125)	N34° 37' 54.00"	W119° 16' 54.00"	7496.72	true	P	2000.0		9697	9696.72	11-Apr-2016 09:00:51
YUTOO	TRAVV	TerrainPt_1_PRPLE:ROKKR:KBUR:RW08_YUTOO:TRAVV		4E (+-250/+125)	N34° 37' 54.00"	W119° 16' 54.00"	7496.72	true	P	2000.0		9697	9696.72	11-Apr-2016 09:00:51
TRAVV	ROKKR	TerrainPt_0_PRPLE:ROKKR:KBUR:RW08_TRAVV:ROKKR		4E (+-250/+125)	N34° 36' 21.00"	W119° 07' 42.00"	6902.89	true	P	2000.0		9103	9102.89	11-Apr-2016 09:00:51
ROKKR	ZEPPE	TerrainPt_34_HIHWY:ROKKR:KBUR:RW08_ROKKR:ZEPPE		4E (+-250/+125)	N34° 30' 36.00"	W119° 04' 33.00"	6702.76	true	P	2000.0		8903	8902.76	11-Apr-2016 09:00:51
ZEPPE	IVINS	TerrainPt_5_HIHWY:ROKKR:KBUR:RW08_ZEPPE:IVINS		4E (+-250/+125)	N34° 27' 30.00"	W119° 00' 33.00"	5000.0	true	P	2000.0		7200	7200.0	11-Apr-2016 09:00:51
IVINS	MIKEI	TerrainPt_13_HIHWY:ROKKR:KBUR:RW08_IVINS:MIKEI		4E (+-250/+125)	N34° 21' 27.00"	W118° 51' 00.00"	2316.27	true	P	2000.0		4517	4516.27	11-Apr-2016 09:00:51

RDHOT:ROKKR:KBUR:RW08 Criteria Failures

No failures.

Route Evaluation for RDHOT:ROKKR:KBUR:RW15

RDHOT:ROKKR:KBUR:RW15 Evaluation Results Part 1/2

Leg Tp	End Pt	Turn Tp	Alt Restr	Alt Restr 2	Spd Restr	Turn Ang	Leg Length	Min Seg Length
IF	RDHOT						0.0	0.0
TF	PRPLE	FLY_BY	-22000.0		280.0	10.79	56.37	3.76
TF	XXELL	FLY_BY	-19000.0			0.82	9.51	3.76
TF	YUTOO	FLY_BY	-16000.0		270.0	7.7	12.63	1.0
TF	TRAVV	FLY_BY	-15000.0			0.07	8.5	1.0
TF	ROKKR	FLY_BY	+11000.0	-12000.0	250.0	21.78	2.99	2.09
TF	ZEPPE	FLY_BY	+9000.0	-10000.0		2.22	7.78	2.09
TF	IVINS	FLY_BY	+8000.0			45.63	5.38	1.86
TF	MAURK	FLY_OVER	6000.0				10.58	1.86
FM							0.0	0.0

RDHOT:ROKKR:KBUR:RW15 Evaluation Results Part 2/2

Leg Tp	End Pt	Turn Tp	DTA1	DTA1 Turn Rad	DTA1 Turn Alt	DTA1 Turn Spd	DTA1 Bank Ang	DTA1 Tailwind	DTA1 True Airspd	DTA1 vGround	DTA2	DTA2 Turn Rad	DTA2 Turn Alt	DTA2 Turn Spd	DTA2 Bank Ang	DTA2 Tailwind	DTA2 True Airspd	DTA2 vGround
IF	RDHOT				0.0	0.0							0.0	0.0				
TF	PRPLE	FLY_BY	0.0		34436.41	300.0	0.0	115.0	551.0	570.0	3.76	39.83	20344.37	280.0	5.0	87.0	397.0	489.0
TF	XXELL	FLY_BY	3.76	39.83	20344.37	280.0	5.0	87.0	397.0	489.0	1.29	180.51	17965.72	280.0	1.0	83.0	382.0	465.0
TF	YUTOO	FLY_BY	1.29	180.51	17965.72	280.0	1.0	83.0	382.0	465.0	2.63	39.1	14807.65	270.0	3.85	76.0	349.0	425.0
TF	TRAVV	FLY_BY	2.63	39.1	14807.65	270.0	3.85	76.0	349.0	425.0	0.09	139.65	12682.58	270.0	1.0	72.0	337.0	409.0
TF	ROKKR	FLY_BY	0.09	139.65	12682.58	270.0	1.0	72.0	337.0	409.0	2.09	10.88	11935.53	250.0	10.89	71.0	308.0	379.0
TF	ZEPPE	FLY_BY	2.09	10.88	11935.53	250.0	10.89	71.0	308.0	379.0	1.95	100.7	9991.71	250.0	1.11	67.0	299.0	366.0
TF	IVINS	FLY_BY	1.95	100.7	9991.71	250.0	1.11	67.0	299.0	366.0	1.86	4.41	8646.14	250.0	22.82	64.0	293.0	357.0
TF	MAURK	FLY_OVER	1.86	4.41	8646.14	250.0	22.82	64.0	293.0	357.0	0.0		6000.0	250.0	0.0	59.0	281.0	340.0
FM			0.0		6000.0	250.0	0.0	59.0	281.0	340.0			0.0	0.0				

RDHOT:ROKKR:KBUR:RW15 Obstacle Evaluation

Start Pt	End Pt	Name	Source	AC (H/V (ft) AMSL)	Lat	Long	Height (ft) AMSL	Mnts Area	Pri/Sec Area	ROC (ft)	WCVH (ft)	MOCA (ft)	Min OCS Alt (ft)	Date
RDHOT	PRPLE	TerrainPt_43_RDHOT:ROKKR:KBUR:RW08_RDHOT:PRPLE		4E (+-250/+125)	N35° 02' 09.00"	W119° 45' 39.00"	5108.27	true	P	2000.0		7309	7308.27	11-Apr-2016 09:00:51
PRPLE	XXELL	TerrainPt_14_PRPLE:ROKKR:KBUR:RW08_PRPLE:XXELL		4E (+-250/+125)	N34° 44' 06.00"	W119° 30' 39.00"	5862.86	true	P	2000.0		8063	8062.86	11-Apr-2016 09:00:51
XXELL	YUTOO	TerrainPt_16_PRPLE:ROKKR:KBUR:RW08_XXELL:YUTOO		4E (+-250/+125)	N34° 37' 54.00"	W119° 16' 54.00"	7496.72	true	P	2000.0		9697	9696.72	11-Apr-2016 09:00:51
YUTOO	TRAVV	TerrainPt_1_PRPLE:ROKKR:KBUR:RW08_YUTOO:TRAVV		4E (+-250/+125)	N34° 37' 54.00"	W119° 16' 54.00"	7496.72	true	P	2000.0		9697	9696.72	11-Apr-2016 09:00:51
TRAVV	ROKKR	TerrainPt_0_PRPLE:ROKKR:KBUR:RW08_TRAVV:ROKKR		4E (+-250/+125)	N34° 36' 21.00"	W119° 07' 42.00"	6902.89	true	P	2000.0		9103	9102.89	11-Apr-2016 09:00:51
ROKKR	ZEPPE	TerrainPt_34_HIHWY:ROKKR:KBUR:RW08_ROKKR:ZEPPE		4E (+-250/+125)	N34° 30' 36.00"	W119° 04' 33.00"	6702.76	true	P	2000.0		8903	8902.76	11-Apr-2016 09:00:51
ZEPPE	IVINS	TerrainPt_5_HIHWY:ROKKR:KBUR:RW08_ZEPPE:IVINS		4E (+-250/+125)	N34° 27' 30.00"	W119° 00' 33.00"	5000.0	true	P	2000.0		7200	7200.0	11-Apr-2016 09:00:51
IVINS	MAURK	TerrainPt_22_HIHWY:ROKKR:KBUR:RW15_IVINS:MAURK		4E (+-250/+125)	N34° 28' 24.00"	W118° 51' 51.00"	4416.01	true	S	1160.3		5777	5776.31	11-Apr-2016 09:00:51

RDHOT:ROKKR:KBUR:RW15 Criteria Failures

No failures.

Route Evaluation for RDHOT:ROKKR:KBUR:RW33

RDHOT:ROKKR:KBUR:RW33 Evaluation Results Part 1/2

Leg Tp	End Pt	Turn Tp	Alt Restr	Alt Restr 2	Spd Restr	Turn Ang	Leg Length	Min Seg Length
IF	RDHOT						0.0	0.0
TF	PRPLE	FLY_BY	-22000.0		280.0	10.79	56.37	3.76
TF	XXELL	FLY_BY	-19000.0			0.82	9.51	3.76
TF	YUTOO	FLY_BY	-16000.0		270.0	7.7	12.63	1.0
TF	TRAVV	FLY_BY	-15000.0			0.07	8.5	1.0
TF	ROKKR	FLY_BY	+11000.0	-12000.0	250.0	21.78	2.99	2.09
TF	ZEPPE	FLY_BY	+9000.0	-10000.0		2.22	7.78	2.09
TF	IVINS	FLY_BY	+8000.0			2.96	5.38	1.0
TF	MIKEI	FLY_BY	7000.0			0.0	8.5	1.0
TF	EHUNT	FLY_OVER	6000.0				6.0	1.0
FM							0.0	0.0

RDHOT:ROKKR:KBUR:RW33 Evaluation Results Part 2/2

Leg Tp	End Pt	Turn Tp	DTA1	DTA1 Turn Rad	DTA1 Turn Alt	DTA1 Turn Spd	DTA1 Bank Ang	DTA1 Tailwind	DTA1 True Airspd	DTA1 vGround	DTA2	DTA2 Turn Rad	DTA2 Turn Alt	DTA2 Turn Spd	DTA2 Bank Ang	DTA2 Tailwind	DTA2 True Airspd	DTA2 vGround
IF	RDHOT				0.0	0.0							0.0	0.0				
TF	PRPLE	FLY_BY	0.0		34444.7	300.0	0.0	115.0	551.0	570.0	3.76	39.83	20352.66	280.0	5.0	87.0	397.0	489.0
TF	XXELL	FLY_BY	3.76	39.83	20352.66	280.0	5.0	87.0	397.0	489.0	1.29	180.51	17974.01	280.0	1.0	83.0	382.0	465.0
TF	YUTOO	FLY_BY	1.29	180.51	17974.01	280.0	1.0	83.0	382.0	465.0	2.63	39.1	14815.94	270.0	3.85	76.0	349.0	425.0
TF	TRAVV	FLY_BY	2.63	39.1	14815.94	270.0	3.85	76.0	349.0	425.0	0.09	139.65	12690.86	270.0	1.0	72.0	337.0	409.0
TF	ROKKR	FLY_BY	0.09	139.65	12690.86	270.0	1.0	72.0	337.0	409.0	2.09	10.88	11943.82	250.0	10.89	71.0	308.0	379.0
TF	ZEPPE	FLY_BY	2.09	10.88	11943.82	250.0	10.89	71.0	308.0	379.0	1.95	100.7	10000.0	250.0	1.11	67.0	299.0	366.0
TF	IVINS	FLY_BY	1.95	100.7	10000.0	250.0	1.11	67.0	299.0	366.0	1.89	73.16	9125.0	250.0	1.48	65.0	295.0	360.0
TF	MIKEI	FLY_BY	1.89	73.16	9125.0	250.0	1.48	65.0	295.0	360.0	0.0		7000.0	250.0	0.0	61.0	285.0	346.0
TF	EHUNT	FLY_OVER	0.0		7000.0	250.0	0.0	61.0	285.0	346.0	0.0		6000.0	250.0	0.0	59.0	281.0	340.0
FM			0.0		6000.0	250.0	0.0	59.0	281.0	340.0			0.0	0.0				

RDHOT:ROKKR:KBUR:RW33 Obstacle Evaluation

Start Pt	End Pt	Name	Source	AC (H/V (ft) AMSL)	Lat	Long	Height (ft) AMSL	Mnts Area	Pri/Sec Area	ROC (ft)	WCVH (ft)	MOCA (ft)	Min OCS Alt (ft)	Date
RDHOT	PRPLE	TerrainPt_43_RDHOT:ROKKR:KBUR:RW08_RDHOT:PRPLE		4E (+-250/+125)	N35° 02' 09.00"	W119° 45' 39.00"	5108.27	true	P	2000.0		7309	7308.27	11-Apr-2016 09:00:51
PRPLE	XXELL	TerrainPt_14_PRPLE:ROKKR:KBUR:RW08_PRPLE:XXELL		4E (+-250/+125)	N34° 44' 06.00"	W119° 30' 39.00"	5862.86	true	P	2000.0		8063	8062.86	11-Apr-2016 09:00:51
XXELL	YUTOO	TerrainPt_16_PRPLE:ROKKR:KBUR:RW08_XXELL:YUTOO		4E (+-250/+125)	N34° 37' 54.00"	W119° 16' 54.00"	7496.72	true	P	2000.0		9697	9696.72	11-Apr-2016 09:00:51
YUTOO	TRAVV	TerrainPt_1_PRPLE:ROKKR:KBUR:RW08_YUTOO:TRAVV		4E (+-250/+125)	N34° 37' 54.00"	W119° 16' 54.00"	7496.72	true	P	2000.0		9697	9696.72	11-Apr-2016 09:00:51
TRAVV	ROKKR	TerrainPt_0_PRPLE:ROKKR:KBUR:RW08_TRAVV:ROKKR		4E (+-250/+125)	N34° 36' 21.00"	W119° 07' 42.00"	6902.89	true	P	2000.0		9103	9102.89	11-Apr-2016 09:00:51
ROKKR	ZEPPE	TerrainPt_34_HIHWY:ROKKR:KBUR:RW08_ROKKR:ZEPPE		4E (+-250/+125)	N34° 30' 36.00"	W119° 04' 33.00"	6702.76	true	P	2000.0		8903	8902.76	11-Apr-2016 09:00:51
ZEPPE	IVINS	TerrainPt_5_HIHWY:ROKKR:KBUR:RW08_ZEPPE:IVINS		4E (+-250/+125)	N34° 27' 30.00"	W119° 00' 33.00"	5000.0	true	P	2000.0		7200	7200.0	11-Apr-2016 09:00:51
IVINS	MIKEI	TerrainPt_13_HIHWY:ROKKR:KBUR:RW08_IVINS:MIKEI		4E (+-250/+125)	N34° 21' 27.00"	W118° 51' 00.00"	2316.27	true	P	2000.0		4517	4516.27	11-Apr-2016 09:00:51
MIKEI	EHUNT	TerrainPt_0_HIHWY:ROKKR:KBUR:RW33_MIKEI:EHUNT		4E (+-250/+125)	N34° 12' 15.00"	W118° 46' 33.00"	2391.73	true	P	2000.0		4592	4591.73	11-Apr-2016 09:00:51

RDHOT:ROKKR:KBUR:RW33 Criteria Failures

No failures.

Route Evaluation for REBRG:ROKKR:KBUR:RW08

REBRG:ROKKR:KBUR:RW08 Evaluation Results Part 1/2

Leg Tp	End Pt	Turn Tp	Alt Restr	Alt Restr 2	Spd Restr	Turn Ang	Leg Length	Min Seg Length
IF	REBRG						0.0	0.0
TF	MMTLY	FLY_BY				15.87	19.63	7.54
TF	CRUUE	FLY_BY				6.97	10.98	7.54
TF	EEAZY	FLY_BY	+24000.0	-29000.0	280.0	24.32	15.49	9.93
TF	HIHWY	FLY_BY	-22000.0		280.0	9.51	18.13	9.93
TF	MAIDD	FLY_BY	-19000.0			0.51	8.4	1.0
TF	PEPRZ	FLY_BY	-16000.0		270.0	0.18	12.37	1.0
TF	HEVYV	FLY_BY	-15000.0			0.3	6.16	1.0
TF	ROKKR	FLY_BY	+11000.0	-12000.0	250.0	9.28	3.0	1.0
TF	ZEPPE	FLY_BY	+9000.0	-10000.0		2.22	7.78	1.0
TF	IVINS	FLY_BY	+8000.0			2.96	5.38	1.0
TF	MIKEI	FLY_BY	7000.0			23.91	8.5	1.74

REBRG:ROKKR:KBUR:RW08 Evaluation Results Part 2/2

Leg Tp	End Pt	Turn Tp	DTA1	DTA1 Turn Rad	DTA1 Turn Alt	DTA1 Turn Spd	DTA1 Bank Ang	DTA1 Tailwind	DTA1 True Airspd	DTA1 vGround	DTA2	DTA2 Turn Rad	DTA2 Turn Alt	DTA2 Turn Spd	DTA2 Bank Ang	DTA2 Tailwind	DTA2 True Airspd	DTA2 vGround
IF	REBRG				0.0	0.0							0.0	0.0				
TF	MMTLY	FLY_BY	0.0		35523.96	300.0	0.0	117.0	563.0	570.0	7.54	54.11	30617.26	300.0	5.0	108.0	512.0	570.0
TF	CRUUE	FLY_BY	7.54	54.11	30617.26	300.0	5.0	108.0	512.0	570.0	3.23	52.98	27872.7	300.0	5.0	102.0	487.0	564.0
TF	EEAZY	FLY_BY	3.23	52.98	27872.7	300.0	5.0	102.0	487.0	564.0	9.93	46.08	24000.0	280.0	5.0	95.0	424.0	526.0
TF	HIHWY	FLY_BY	9.93	46.08	24000.0	280.0	5.0	95.0	424.0	526.0	3.3	39.71	19426.4	280.0	4.75	85.0	391.0	476.0
TF	MAIDD	FLY_BY	3.3	39.71	19426.4	280.0	4.75	85.0	391.0	476.0	0.77	175.12	17326.41	280.0	1.0	81.0	377.0	458.0
TF	PEPRZ	FLY_BY	0.77	175.12	17326.41	280.0	1.0	81.0	377.0	458.0	0.23	147.96	14233.56	270.0	1.0	75.0	346.0	421.0
TF	HEVYV	FLY_BY	0.23	147.96	14233.56	270.0	1.0	75.0	346.0	421.0	0.37	139.65	12694.47	270.0	1.0	72.0	337.0	409.0
TF	ROKKR	FLY_BY	0.37	139.65	12694.47	270.0	1.0	72.0	337.0	409.0	2.09	25.8	11943.82	250.0	4.64	71.0	308.0	379.0
TF	ZEPPE	FLY_BY	2.09	25.8	11943.82	250.0	4.64	71.0	308.0	379.0	1.95	100.7	10000.0	250.0	1.11	67.0	299.0	366.0
TF	IVINS	FLY_BY	1.95	100.7	10000.0	250.0	1.11	67.0	299.0	366.0	1.89	73.16	9125.0	250.0	1.48	65.0	295.0	360.0
TF	MIKEI	FLY_BY	1.89	73.16	9125.0	250.0	1.48	65.0	295.0	360.0	1.74	8.24	7000.0	250.0	11.95	61.0	285.0	346.0

ROKKR RNAV

REBRG:ROKKR:KBUR:RW08 Obstacle Evaluation

Start Pt	End Pt	Name	Source	AC (H/V (ft) AMSL)	Lat	Long	Height (ft) AMSL	Mnts Area	Pri/Sec Area	ROC (ft)	WCVH (ft)	MOCA (ft)	Min OCS Alt (ft)	Date
REBRG	MMTLY	TerrainPt_39_REBRG:ROKKR:KBUR:RW08_REBRG:MMTLY		4E (+-250/+125)	N35° 38' 57.00"	W119° 45' 27.00"	465.88	true	P	2000.0		2666	2665.88	11-Apr-2016 09:00:51
MMTLY	CRUUE	TerrainPt_21_REBRG:ROKKR:KBUR:RW08_MMTLY:CRUUE		4E (+-250/+125)	N35° 25' 57.00"	W119° 43' 30.00"	685.7	true	P	2000.0		2886	2885.7	11-Apr-2016 09:00:51
CRUUE	EEAZY	TerrainPt_24_REBRG:ROKKR:KBUR:RW08_CRUUE:EEAZY		4E (+-250/+125)	N35° 10' 15.00"	W119° 38' 00.00"	3559.71	true	P	2000.0		5760	5759.71	11-Apr-2016 09:00:51
EEAZY	HIHWY	TerrainPt_18_REBRG:ROKKR:KBUR:RW08_EEAZY:HIHWY		4E (+-250/+125)	N34° 55' 12.00"	W119° 24' 21.00"	4501.31	true	P	2000.0		6702	6701.31	11-Apr-2016 09:00:51
HIHWY	MAIDD	TerrainPt_51_HIHWY:ROKKR:KBUR:RW08_HIHWY:MAIDD		4E (+-250/+125)	N34° 52' 09.00"	W119° 11' 24.00"	7162.07	true	P	2000.0		9363	9362.07	11-Apr-2016 09:00:51
MAIDD	PEPRZ	TerrainPt_0_HIHWY:ROKKR:KBUR:RW08_MAIDD:PEPRZ		4E (+-250/+125)	N34° 48' 48.00"	W119° 10' 03.00"	8815.62	true	P	2000.0		11016	11015.62	11-Apr-2016 09:00:51
PEPRZ	HEVVY	TerrainPt_19_HIHWY:ROKKR:KBUR:RW08_PEPRZ:HEVVY		4E (+-250/+125)	N34° 38' 24.00"	W119° 12' 39.00"	6938.98	true	P	2000.0		9139	9138.98	11-Apr-2016 09:00:51
HEVVY	ROKKR	TerrainPt_0_HIHWY:ROKKR:KBUR:RW08_HEVVY:ROKKR		4E (+-250/+125)	N34° 36' 21.00"	W119° 07' 42.00"	6902.89	true	P	2000.0		9103	9102.89	11-Apr-2016 09:00:51
ROKKR	ZEPPE	TerrainPt_34_HIHWY:ROKKR:KBUR:RW08_ROKKR:ZEPPE		4E (+-250/+125)	N34° 30' 36.00"	W119° 04' 33.00"	6702.76	true	P	2000.0		8903	8902.76	11-Apr-2016 09:00:51
ZEPPE	IVINS	TerrainPt_5_HIHWY:ROKKR:KBUR:RW08_ZEPPE:IVINS		4E (+-250/+125)	N34° 27' 30.00"	W119° 00' 33.00"	5000.0	true	P	2000.0		7200	7200.0	11-Apr-2016 09:00:51
IVINS	MIKEI	TerrainPt_13_HIHWY:ROKKR:KBUR:RW08_IVINS:MIKEI		4E (+-250/+125)	N34° 21' 27.00"	W118° 51' 00.00"	2316.27	true	P	2000.0		4517	4516.27	11-Apr-2016 09:00:51

REBRG:ROKKR:KBUR:RW08 Criteria Failures

No failures.

Route Evaluation for REBRG:ROKKR:KBUR:RW15

REBRG:ROKKR:KBUR:RW15 Evaluation Results Part 1/2

Leg Tp	End Pt	Turn Tp	Alt Restr	Alt Restr 2	Spd Restr	Turn Ang	Leg Length	Min Seg Length
IF	REBRG						0.0	0.0
TF	MMTLY	FLY_BY				15.87	19.63	7.54
TF	CRUUE	FLY_BY				6.97	10.98	7.54
TF	EEAZY	FLY_BY	+24000.0	-29000.0	280.0	24.32	15.49	9.93
TF	HIHWY	FLY_BY	-22000.0		280.0	9.51	18.13	9.93
TF	MAIDD	FLY_BY	-19000.0			0.51	8.4	1.0
TF	PEPRZ	FLY_BY	-16000.0		270.0	0.18	12.37	1.0
TF	HEVVY	FLY_BY	-15000.0			0.3	6.16	1.0
TF	ROKKR	FLY_BY	+11000.0	-12000.0	250.0	9.28	3.0	1.0
TF	ZEPPE	FLY_BY	+9000.0	-10000.0		2.22	7.78	1.0
TF	IVINS	FLY_BY	+8000.0			45.63	5.38	1.86
TF	MAURK	FLY_OVER	6000.0				10.58	1.86
FM							0.0	0.0

REBRG:ROKKR:KBUR:RW15 Evaluation Results Part 2/2

Leg Tp	End Pt	Turn Tp	DTA1	DTA1 Turn Rad	DTA1 Turn Alt	DTA1 Turn Spd	DTA1 Bank Ang	DTA1 Tailwind	DTA1 True Airspd	DTA1 vGround	DTA2	DTA2 Turn Rad	DTA2 Turn Alt	DTA2 Turn Spd	DTA2 Bank Ang	DTA2 Tailwind	DTA2 True Airspd	DTA2 vGround
IF	REBRG				0.0	0.0							0.0	0.0				
TF	MMTLY	FLY_BY	0.0		35523.96	300.0	0.0	117.0	563.0	570.0	7.54	54.11	30617.26	300.0	5.0	108.0	512.0	570.0
TF	CRUUE	FLY_BY	7.54	54.11	30617.26	300.0	5.0	108.0	512.0	570.0	3.23	52.98	27872.7	300.0	5.0	102.0	487.0	564.0
TF	EEAZY	FLY_BY	3.23	52.98	27872.7	300.0	5.0	102.0	487.0	564.0	9.93	46.08	24000.0	280.0	5.0	95.0	424.0	526.0
TF	HIHWY	FLY_BY	9.93	46.08	24000.0	280.0	5.0	95.0	424.0	526.0	3.3	39.71	19418.12	280.0	4.75	85.0	391.0	476.0
TF	MAIDD	FLY_BY	3.3	39.71	19418.12	280.0	4.75	85.0	391.0	476.0	0.77	175.12	17318.12	280.0	1.0	81.0	377.0	458.0
TF	PEPRZ	FLY_BY	0.77	175.12	17318.12	280.0	1.0	81.0	377.0	458.0	0.23	147.96	14225.28	270.0	1.0	75.0	346.0	421.0
TF	HEVVY	FLY_BY	0.23	147.96	14225.28	270.0	1.0	75.0	346.0	421.0	0.37	139.65	12686.18	270.0	1.0	72.0	337.0	409.0
TF	ROKKR	FLY_BY	0.37	139.65	12686.18	270.0	1.0	72.0	337.0	409.0	2.09	25.8	11935.53	250.0	4.64	71.0	308.0	379.0
TF	ZEPPE	FLY_BY	2.09	25.8	11935.53	250.0	4.64	71.0	308.0	379.0	1.95	100.7	9991.71	250.0	1.11	67.0	299.0	366.0
TF	IVINS	FLY_BY	1.95	100.7	9991.71	250.0	1.11	67.0	299.0	366.0	1.86	4.41	8646.14	250.0	22.82	64.0	293.0	357.0
TF	MAURK	FLY_OVER	1.86	4.41	8646.14	250.0	22.82	64.0	293.0	357.0	0.0		6000.0	250.0	0.0	59.0	281.0	340.0
FM			0.0		6000.0	250.0	0.0	59.0	281.0	340.0			0.0	0.0				

REBRG:ROKKR:KBUR:RW15 Obstacle Evaluation

Start Pt	End Pt	Name	Source	AC (H/V (ft) AMSL)	Lat	Long	Height (ft) AMSL	Mnts Area	Pri/Sec Area	ROC (ft)	WCVH (ft)	MOCA (ft)	Min OCS Alt (ft)	Date
REBRG	MMTLY	TerrainPt_39_REBRG:ROKKR:KBUR:RW08_REBRG:MMTLY		4E (+-250/+125)	N35° 38' 57.00"	W119° 45' 27.00"	465.88	true	P	2000.0		2666	2665.88	11-Apr-2016 09:00:51
MMTLY	CRUUE	TerrainPt_21_REBRG:ROKKR:KBUR:RW08_MMTLY:CRUUE		4E (+-250/+125)	N35° 25' 57.00"	W119° 43' 30.00"	685.7	true	P	2000.0		2886	2885.7	11-Apr-2016 09:00:51
CRUUE	EEAZY	TerrainPt_24_REBRG:ROKKR:KBUR:RW08_CRUUE:EEAZY		4E (+-250/+125)	N35° 10' 15.00"	W119° 38' 00.00"	3559.71	true	P	2000.0		5760	5759.71	11-Apr-2016 09:00:51
EEAZY	HIHWY	TerrainPt_18_REBRG:ROKKR:KBUR:RW08_EEAZY:HIHWY		4E (+-250/+125)	N34° 55' 12.00"	W119° 24' 21.00"	4501.31	true	P	2000.0		6702	6701.31	11-Apr-2016 09:00:51
HIHWY	MAIDD	TerrainPt_51_HIHWY:ROKKR:KBUR:RW08_HIHWY:MAIDD		4E (+-250/+125)	N34° 52' 09.00"	W119° 11' 24.00"	7162.07	true	P	2000.0		9363	9362.07	11-Apr-2016 09:00:51
MAIDD	PEPRZ	TerrainPt_0_HIHWY:ROKKR:KBUR:RW08_MAIDD:PEPRZ		4E (+-250/+125)	N34° 48' 48.00"	W119° 10' 03.00"	8815.62	true	P	2000.0		11016	11015.62	11-Apr-2016 09:00:51
PEPRZ	HEVVY	TerrainPt_19_HIHWY:ROKKR:KBUR:RW08_PEPRZ:HEVVY		4E (+-250/+125)	N34° 38' 24.00"	W119° 12' 39.00"	6938.98	true	P	2000.0		9139	9138.98	11-Apr-2016 09:00:51
HEVVY	ROKKR	TerrainPt_0_HIHWY:ROKKR:KBUR:RW08_HEVVY:ROKKR		4E (+-250/+125)	N34° 36' 21.00"	W119° 07' 42.00"	6902.89	true	P	2000.0		9103	9102.89	11-Apr-2016 09:00:51
ROKKR	ZEPPE	TerrainPt_34_HIHWY:ROKKR:KBUR:RW08_ROKKR:ZEPPE		4E (+-250/+125)	N34° 30' 36.00"	W119° 04' 33.00"	6702.76	true	P	2000.0		8903	8902.76	11-Apr-2016 09:00:51
ZEPPE	IVINS	TerrainPt_5_HIHWY:ROKKR:KBUR:RW08_ZEPPE:IVINS		4E (+-250/+125)	N34° 27' 30.00"	W119° 00' 33.00"	5000.0	true	P	2000.0		7200	7200.0	11-Apr-2016 09:00:51
IVINS	MAURK	TerrainPt_22_HIHWY:ROKKR:KBUR:RW15_IVINS:MAURK		4E (+-250/+125)	N34° 28' 24.00"	W118° 51' 51.00"	4416.01	true	S	1160.3		5777	5776.31	11-Apr-2016 09:00:51

REBRG:ROKKR:KBUR:RW15 Criteria Failures

No failures.

Route Evaluation for REBRG:ROKKR:KBUR:RW33

REBRG:ROKKR:KBUR:RW33 Evaluation Results Part 1/2

Leg Tp	End Pt	Turn Tp	Alt Restr	Alt Restr 2	Spd Restr	Turn Ang	Leg Length	Min Seg Length
IF	REBRG						0.0	0.0
TF	MMTLY	FLY_BY				15.87	19.63	7.54
TF	CRUUE	FLY_BY				6.97	10.98	7.54
TF	EEAZY	FLY_BY	+24000.0	-29000.0	280.0	24.32	15.49	9.93
TF	HIHWY	FLY_BY	-22000.0		280.0	9.51	18.13	9.93
TF	MAIDD	FLY_BY	-19000.0			0.51	8.4	1.0
TF	PEPRZ	FLY_BY	-16000.0		270.0	0.18	12.37	1.0
TF	HEVVY	FLY_BY	-15000.0			0.3	6.16	1.0
TF	ROKKR	FLY_BY	+11000.0	-12000.0	250.0	9.28	3.0	1.0
TF	ZEPPE	FLY_BY	+9000.0	-10000.0		2.22	7.78	1.0
TF	IVINS	FLY_BY	+8000.0			2.96	5.38	1.0
TF	MIKEI	FLY_BY	7000.0			0.0	8.5	1.0
TF	EHUNT	FLY_OVER	6000.0				6.0	1.0
FM							0.0	0.0

REBRG:ROKKR:KBUR:RW33 Evaluation Results Part 2/2

Leg Tp	End Pt	Turn Tp	DTA1	DTA1 Turn Rad	DTA1 Turn Alt	DTA1 Turn Spd	DTA1 Bank Ang	DTA1 Tailwind	DTA1 True Airspd	DTA1 vGround	DTA2	DTA2 Turn Rad	DTA2 Turn Alt	DTA2 Turn Spd	DTA2 Bank Ang	DTA2 Tailwind	DTA2 True Airspd	DTA2 vGround
IF	REBRG				0.0	0.0							0.0	0.0				
TF	MMTLY	FLY_BY	0.0		35523.96	300.0	0.0	117.0	563.0	570.0	7.54	54.11	30617.26	300.0	5.0	108.0	512.0	570.0
TF	CRUUE	FLY_BY	7.54	54.11	30617.26	300.0	5.0	108.0	512.0	570.0	3.23	52.98	27872.7	300.0	5.0	102.0	487.0	564.0
TF	EEAZY	FLY_BY	3.23	52.98	27872.7	300.0	5.0	102.0	487.0	564.0	9.93	46.08	24000.0	280.0	5.0	95.0	424.0	526.0
TF	HIHWY	FLY_BY	9.93	46.08	24000.0	280.0	5.0	95.0	424.0	526.0	3.3	39.71	19426.4	280.0	4.75	85.0	391.0	476.0
TF	MAIDD	FLY_BY	3.3	39.71	19426.4	280.0	4.75	85.0	391.0	476.0	0.77	175.12	17326.41	280.0	1.0	81.0	377.0	458.0
TF	PEPRZ	FLY_BY	0.77	175.12	17326.41	280.0	1.0	81.0	377.0	458.0	0.23	147.96	14233.56	270.0	1.0	75.0	346.0	421.0
TF	HEVVY	FLY_BY	0.23	147.96	14233.56	270.0	1.0	75.0	346.0	421.0	0.37	139.65	12694.47	270.0	1.0	72.0	337.0	409.0
TF	ROKKR	FLY_BY	0.37	139.65	12694.47	270.0	1.0	72.0	337.0	409.0	2.09	25.8	11943.82	250.0	4.64	71.0	308.0	379.0
TF	ZEPPE	FLY_BY	2.09	25.8	11943.82	250.0	4.64	71.0	308.0	379.0	1.95	100.7	10000.0	250.0	1.11	67.0	299.0	366.0
TF	IVINS	FLY_BY	1.95	100.7	10000.0	250.0	1.11	67.0	299.0	366.0	1.89	73.16	9125.0	250.0	1.48	65.0	295.0	360.0
TF	MIKEI	FLY_BY	1.89	73.16	9125.0	250.0	1.48	65.0	295.0	360.0	0.0		7000.0	250.0	0.0	61.0	285.0	346.0
TF	EHUNT	FLY_OVER	0.0		7000.0	250.0	0.0	61.0	285.0	346.0	0.0		6000.0	250.0	0.0	59.0	281.0	340.0
FM			0.0		6000.0	250.0	0.0	59.0	281.0	340.0			0.0	0.0				

ROKKR RNAV

REBRG:ROKKR:KBUR:RW33 Obstacle Evaluation

Start Pt	End Pt	Name	Source	AC (H/V) (ft) AMSL)	Lat	Long	Height (ft) AMSL	Mnts Area	Pri/Sec Area	ROC (ft)	WCVH (ft)	MOCA (ft)	Min OCS Alt (ft)	Date
REBRG	MMTLY	TerrainPt_39_REBRG:ROKKR:KBUR:RW08_REBRG:MMTLY		4E (+-250/+125)	N35° 38' 57.00"	W119° 45' 27.00"	465.88	true	P	2000.0		2666	2665.88	11-Apr-2016 09:00:51
MMTLY	CRUUE	TerrainPt_21_REBRG:ROKKR:KBUR:RW08_MMTLY:CRUUE		4E (+-250/+125)	N35° 25' 57.00"	W119° 43' 30.00"	685.7	true	P	2000.0		2886	2885.7	11-Apr-2016 09:00:51
CRUUE	EEAZY	TerrainPt_24_REBRG:ROKKR:KBUR:RW08_CRUUE:EEAZY		4E (+-250/+125)	N35° 10' 15.00"	W119° 38' 00.00"	3559.71	true	P	2000.0		5760	5759.71	11-Apr-2016 09:00:51
EEAZY	HIHWY	TerrainPt_18_REBRG:ROKKR:KBUR:RW08_EEAZY:HIHWY		4E (+-250/+125)	N34° 55' 12.00"	W119° 24' 21.00"	4501.31	true	P	2000.0		6702	6701.31	11-Apr-2016 09:00:51
HIHWY	MAIDD	TerrainPt_51_HIHWY:ROKKR:KBUR:RW08_HIHWY:MAIDD		4E (+-250/+125)	N34° 52' 09.00"	W119° 11' 24.00"	7162.07	true	P	2000.0		9363	9362.07	11-Apr-2016 09:00:51
MAIDD	PEPRZ	TerrainPt_0_HIHWY:ROKKR:KBUR:RW08_MAIDD:PEPRZ		4E (+-250/+125)	N34° 48' 48.00"	W119° 10' 03.00"	8815.62	true	P	2000.0		11016	11015.62	11-Apr-2016 09:00:51
PEPRZ	HEVVY	TerrainPt_19_HIHWY:ROKKR:KBUR:RW08_PEPRZ:HEVVY		4E (+-250/+125)	N34° 38' 24.00"	W119° 12' 39.00"	6938.98	true	P	2000.0		9139	9138.98	11-Apr-2016 09:00:51
HEVVY	ROKKR	TerrainPt_0_HIHWY:ROKKR:KBUR:RW08_HEVVY:ROKKR		4E (+-250/+125)	N34° 36' 21.00"	W119° 07' 42.00"	6902.89	true	P	2000.0		9103	9102.89	11-Apr-2016 09:00:51
ROKKR	ZEPPE	TerrainPt_34_HIHWY:ROKKR:KBUR:RW08_ROKKR:ZEPPE		4E (+-250/+125)	N34° 30' 36.00"	W119° 04' 33.00"	6702.76	true	P	2000.0		8903	8902.76	11-Apr-2016 09:00:51
ZEPPE	IVINS	TerrainPt_5_HIHWY:ROKKR:KBUR:RW08_ZEPPE:IVINS		4E (+-250/+125)	N34° 27' 30.00"	W119° 00' 33.00"	5000.0	true	P	2000.0		7200	7200.0	11-Apr-2016 09:00:51
IVINS	MIKEI	TerrainPt_13_HIHWY:ROKKR:KBUR:RW08_IVINS:MIKEI		4E (+-250/+125)	N34° 21' 27.00"	W118° 51' 00.00"	2316.27	true	P	2000.0		4517	4516.27	11-Apr-2016 09:00:51
MIKEI	EHUNT	TerrainPt_0_HIHWY:ROKKR:KBUR:RW33_MIKEI:EHUNT		4E (+-250/+125)	N34° 12' 15.00"	W118° 46' 33.00"	2391.73	true	P	2000.0		4592	4591.73	11-Apr-2016 09:00:51

REBRG:ROKKR:KBUR:RW33 Criteria Failures

No failures.

Evaluation Input

Name:	RS Results ROKKR
Project:	BUR_VNY ROKKR STAR paperwork_20151013
Last evaluated:	11-Apr-2016 08:57:40
Evaluated obstacles?:	true
Obstacle Database:	AIRNAV2
Evaluated terrain?:	true
Worst Case Vegetation Height (ft) AGL:	0

Terrain Information

Terrain Extractor Name	Extractor Location	Extractor Type	Resolution
DTED 3 Sec	C:\Program Files (x86)\TARGETS\data\DTED-3Sec	org.mitre.caasd.terrain.DTEExtractor	3.0

Procedure Criteria Failures

No failures.

Evaluation Notes and Warnings

CEW14: In the route beginning at PRPLE and ending at MIKEI, on the leg from TRAVV to ROKKR an alternative OEA construction method was applied.
 CEW14: In the route beginning at PRPLE and ending at MAURK, on the leg from TRAVV to ROKKR an alternative OEA construction method was applied.
 CEW14: In the route beginning at PRPLE and ending at EHUNT, on the leg from TRAVV to ROKKR an alternative OEA construction method was applied.
 CEW14: In the route beginning at RDHOT and ending at MIKEI, on the leg from TRAVV to ROKKR an alternative OEA construction method was applied.
 CEW14: In the route beginning at RDHOT and ending at MAURK, on the leg from TRAVV to ROKKR an alternative OEA construction method was applied.
 CEW14: In the route beginning at RDHOT and ending at EHUNT, on the leg from TRAVV to ROKKR an alternative OEA construction method was applied.

Obstacles Requiring Accuracy Code Verification

None.

Database Effective Dates

Database	Date
UddfObstacle	03/09/2015
Tiled AIRNAV2	N/A
OEAAA	N/A
NFDC	03/31/2016
IFP_OFFLINE	N/A
AVNIS	04/11/2016
DOF	03/31/2016
AVNII_OFFLINE	N/A
AIRNAV2	04/11/2016
CIFP	03/31/2016

Notes: