

PCIFC RNAV

Point Of Contact

Organization Name - Southern California Metroplex

POC's Name - Robert E. Henry-Metroplex Lead/Jose Gonzalez-NATCA Co-Lead

Telephone Number - (661) 265-8434

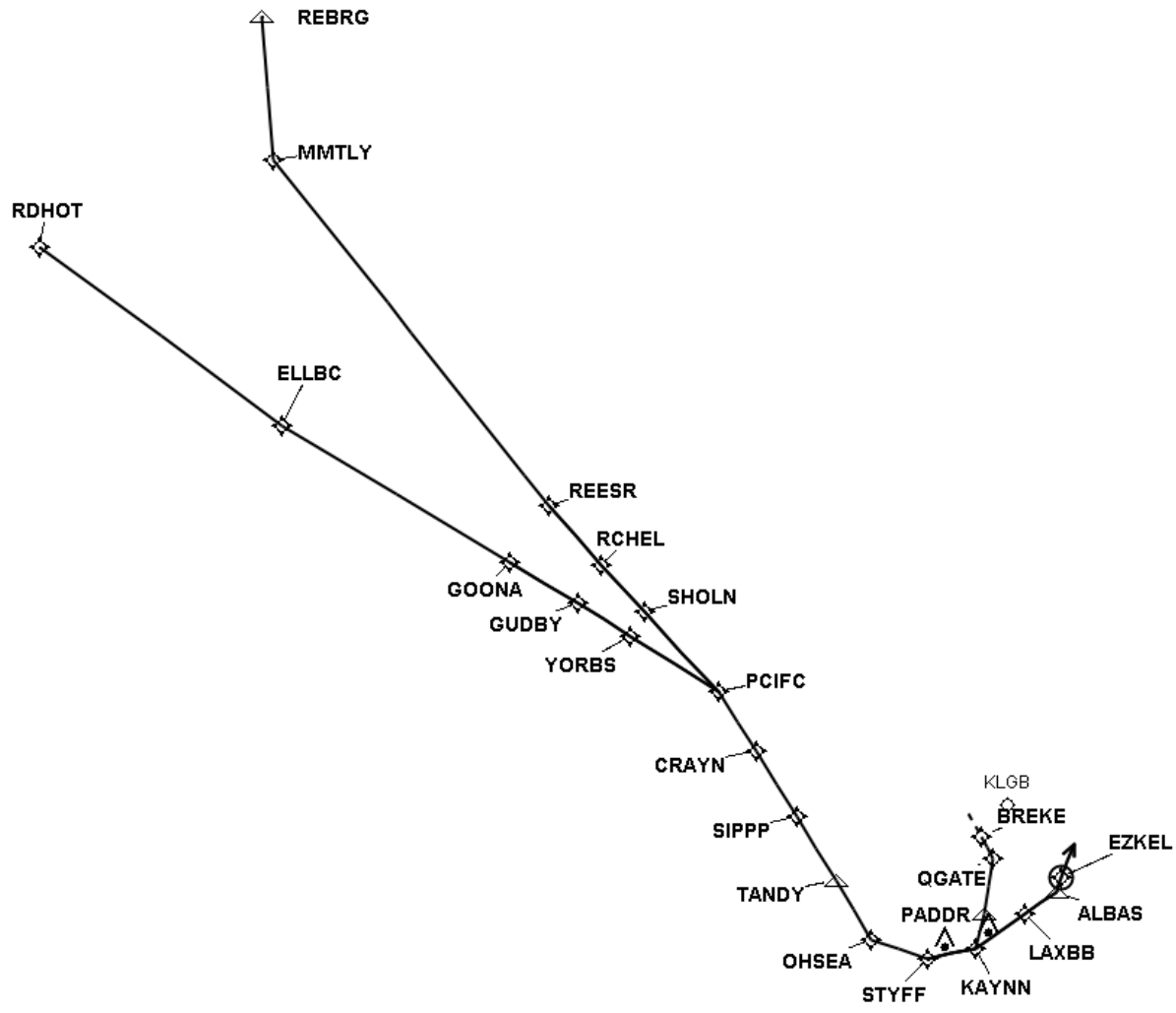
FAX Number - 661-265-8338

Email Address - Robert.Henry@faa.gov;Jose.J.Gonzalez@faa.gov

TARGETS Distribution Package

Version:5.0.4.1

Date: Tue Jun 30 08:54:31 AKDT 2015



PCIFC RNAV

En Route Transition Data - GOONA

DB	End Point	Latitude (D° M' S.ss")	Longitude (D° M' S.ss")	FO/FB	Leg	TC	MC	Distance	Altitude	Speed	MEA	MOCA	Arc Center Lat (D° M' S.ss")	Arc Center Lon (D° M' S.ss")	Arc Radius (NM)
	GOONA WP	N34 38 02.26	W119 19 03.85		IF				+30000						
	GUDBY WP	N34 30 20.49	W119 09 49.56	FB	TF	135.16	121.16	10.83	+28000		17000	9700			
	YORBS WP	N34 24 07.71	W119 02 35.65	FB	TF	136.01	122.01	8.62	+25000	280	17000	9000			
	PCIFC WP	N34 13 45.15	W118 50 45.59	FB	TF	136.52	122.52	14.26	+21000		17000	7200			

En Route Transition Data - RDHOT

DB	End Point	Latitude (D° M' S.ss")	Longitude (D° M' S.ss")	FO/FB	Leg	TC	MC	Distance	Altitude	Speed	MEA	MOCA	Arc Center Lat (D° M' S.ss")	Arc Center Lon (D° M' S.ss")	Arc Radius (NM)
	RDHOT WP	N35 35 33.31	W120 21 36.43		IF										
	ELLBC WP	N35 03 48.28	W119 50 01.16	FB	TF	140.66	126.66	40.90			17000	6900			
	GOONA WP	N34 38 02.26	W119 19 03.85	FB	TF	135.13	121.13	36.21	+30000		17000	9700			
	GUDBY WP	N34 30 20.49	W119 09 49.56	FB	TF	135.16	121.16	10.83	+28000		17000	9700			
	YORBS WP	N34 24 07.71	W119 02 35.65	FB	TF	136.01	122.01	8.62	+25000	280	17000	9000			
	PCIFC WP	N34 13 45.15	W118 50 45.59	FB	TF	136.52	122.52	14.26	+21000		17000	7200			

En Route Transition Data - REBRG

DB	End Point	Latitude (D° M' S.ss")	Longitude (D° M' S.ss")	FO/FB	Leg	TC	MC	Distance	Altitude	Speed	MEA	MOCA	Arc Center Lat (D° M' S.ss")	Arc Center Lon (D° M' S.ss")	Arc Radius (NM)
AVNIS	REBRG WP	N35 58 53.00	W119 36 53.00		IF										
	MMTLY WP	N35 39 29.51	W119 40 49.65	FB	TF	189.43	175.43	19.63			17000	2700			
	REESR WP	N34 44 11.51	W119 10 33.25	FB	TF	155.66	141.66	60.53	+30000		17000	11100			
	RCHEL WP	N34 34 37.76	W119 04 28.71	FB	TF	152.27	138.27	10.78	+28000		17000	11100			
	SHOLN WP	N34 26 51.39	W118 59 26.98	FB	TF	151.80	137.80	8.80	+25000	280	17000	9000			
	PCIFC WP	N34 13 45.15	W118 50 45.59	FB	TF	151.14	137.14	14.93	+21000		17000	7300			

En Route Transition Data - REESR

DB	End Point	Latitude (D° M' S.ss")	Longitude (D° M' S.ss")	FO/FB	Leg	TC	MC	Distance	Altitude	Speed	MEA	MOCA	Arc Center Lat (D° M' S.ss")	Arc Center Lon (D° M' S.ss")	Arc Radius (NM)
	REESR WP	N34 44 11.51	W119 10 33.25		IF				+30000						
	RCHEL WP	N34 34 37.76	W119 04 28.71	FB	TF	152.27	138.27	10.78	+28000		17000	11100			
	SHOLN WP	N34 26 51.39	W118 59 26.98	FB	TF	151.80	137.80	8.80	+25000	280	17000	9000			
	PCIFC WP	N34 13 45.15	W118 50 45.59	FB	TF	151.14	137.14	14.93	+21000		17000	7300			

Common Route Data - PCIFC

DB	End Point	Latitude (D° M' S.ss")	Longitude (D° M' S.ss")	FO/FB	Leg	TC	MC	Distance	Altitude	Speed	MEA	MOCA	Arc Center Lat (D° M' S.ss")	Arc Center Lon (D° M' S.ss")	Arc Radius (NM)
	PCIFC WP	N34 13 45.15	W118 50 45.59		IF				+21000						
	CRAYN WP	N34 04 41.05	W118 47 10.15	FB	TF	161.76	147.76	9.53	+17000		17000	5100			
	SIPPP WP	N33 54 32.58	W118 43 14.60	FB	TF	162.11	148.11	10.64	+14000		14000	5100			
AVNIS	TANDY WP	N33 44 47.67	W118 39 29.06	FB	TF	162.14	148.14	10.22	+13000 -14000		13000	2300			
	OHSEA WP	N33 35 45.80	W118 36 17.80	FB	TF	163.54	149.54	9.40			4000	2300			
	STYFF WP	N33 31 18.00	W118 27 56.40	FB	TF	122.50	108.50	8.28	-9000		4000				

Runway Transition Data - KLGB:RW12

DB	End Point	Latitude (D° M' S.ss")	Longitude (D° M' S.ss")	FO/FB	Leg	TC	MC	Distance	Altitude	Speed	MEA	MOCA	Arc Center Lat (D° M' S.ss")	Arc Center Lon (D° M' S.ss")	Arc Radius (NM)
	STYFF WP	N33 31 18.00	W118 27 56.40		IF				-9000						
	KAYNN WP	N33 31 05.60	W118 19 55.30	FB	TF	91.73	77.73	6.71	-7000		3000	2300			
AVNIS	PADDR WP	N33 35 29.88	W118 17 00.66	FB	TF	28.94	14.94	5.02	+3000 -6000		3000	2300			
AVNIS	QGATE WP	N33 42 31.68	W118 13 22.02	FB	TF	23.42	9.42	7.65	+3000		3000	2500			
AVNIS	BREKE WP	N33 45 46.07	W118 14 22.11	FB	TF	345.52	331.52	3.34	3000		3000	2500			

Runway Transition Data - KLGB:RW25R,RW30

DB	End Point	Latitude (D° M' S.ss")	Longitude (D° M' S.ss")	FO/FB	Leg	TC	MC	Distance	Altitude	Speed	MEA	MOCA	Arc Center Lat (D° M' S.ss")	Arc Center Lon (D° M' S.ss")	Arc Radius (NM)
	STYFF WP	N33 31 18.00	W118 27 56.40		IF				-9000						
	KAYNN WP	N33 31 05.60	W118 19 55.30	FB	TF	91.73	77.73	6.71	-7000		3000	2300			
	LAXBB WP	N33 34 03.00	W118 10 40.80	FB	TF	69.05	55.05	8.27	-5000		3000	2300			
AVNIS	ALBAS WP	N33 35 58.68	W118 04 40.16	FB	TF	69.00	55.00	5.38	4000		3000	2300			
	EZKEL WP	N33 37 38.35	W118 03 19.79	FO	TF	34.00	20.00	2.00			2200	2200			
	EZKEL WP	N33 37 38.35	W118 03 19.79		FM	34.00	20.00								

Waypoint Data

DB	Waypoint	Arc Center	Lat-Long (DMS.S)	Latitude (Deg)	Longitude (Deg)	Latitude (D°, M.mm')	Longitude (D°, M.mm')	Latitude (D° M' S.ss")	Longitude (D° M' S.ss")
AVNIS	ALBAS WP		333558.68N-1180440.16W	N 33.5996333	W 118.0778222	N33 35.978	W118 04.669	N33 35 58.68	W118 04 40.16
AVNIS	BREKE WP		334546.07N-1181422.11W	N 33.7627972	W 118.2394750	N33 45.768	W118 14.368	N33 45 46.07	W118 14 22.11
	CRAYN WP		340441.05N-1184710.15W	N 34.0780689	W 118.7861530	N34 04.684	W118 47.169	N34 04 41.05	W118 47 10.15
	ELLBC WP		350348.28N-1195001.16W	N 35.0634117	W 119.8336569	N35 03.805	W119 50.019	N35 03 48.28	W119 50 01.16
	EZKEL WP		333738.35N-1180319.79W	N 33.6273200	W 118.0554964	N33 37.639	W118 03.330	N33 37 38.35	W118 03 19.79
	GOONA WP		343802.26N-1191903.85W	N 34.6339610	W 119.3177357	N34 38.038	W119 19.064	N34 38 02.26	W119 19 03.85
	GUDBY WP		343020.49N-1190949.56W	N 34.5056903	W 119.1637665	N34 30.341	W119 09.826	N34 30 20.49	W119 09 49.56
AVNIS	IPL VORTAC		324455.92N-1153030.90W	N 32.7488667	W 115.5085833	N32 44.932	W115 30.515	N32 44 55.92	W115 30 30.90
	KAYNN WP		333105.60N-1181955.30W	N 33.5182222	W 118.3320278	N33 31.093	W118 19.922	N33 31 05.60	W118 19 55.30
	LAXBB WP		333403.00N-1181040.80W	N 33.5675000	W 118.1780000	N33 34.050	W118 10.680	N33 34 03.00	W118 10 40.80
	MMTLY WP		353929.51N-1194049.65W	N 35.6581959	W 119.6804593	N35 39.492	W119 40.828	N35 39 29.51	W119 40 49.65
	OHSEA WP		333545.80N-1183617.80W	N 33.5960556	W 118.6049444	N33 35.763	W118 36.297	N33 35 45.80	W118 36 17.80
AVNIS	PADDR WP		333529.88N-1181700.66W	N 33.5916333	W 118.2835167	N33 35.498	W118 17.011	N33 35 29.88	W118 17 00.66
	PCIFC WP		341345.15N-1185045.59W	N 34.2292076	W 118.8459980	N34 13.752	W118 50.760	N34 13 45.15	W118 50 45.59
AVNIS	QGATE WP		334231.68N-1181322.02W	N 33.7088000	W 118.2227833	N33 42.528	W118 13.367	N33 42 31.68	W118 13 22.02
	RCHEL WP		343437.76N-1190428.71W	N 34.5771561	W 119.0746419	N34 34.629	W119 04.479	N34 34 37.76	W119 04 28.71
	RDHOT WP		353533.31N-1202136.43W	N 35.5925854	W 120.3601182	N35 35.555	W120 21.607	N35 35 33.31	W120 21 36.43
AVNIS	REBRG WP		355853.00N-1193653.00W	N 35.9813889	W 119.6147222	N35 58.883	W119 36.883	N35 58 53.00	W119 36 53.00
	REESR WP		344411.51N-1191033.25W	N 34.7365313	W 119.1759032	N34 44.192	W119 10.554	N34 44 11.51	W119 10 33.25
	SHOLN WP		342651.39N-1185926.98W	N 34.4476076	W 118.9908272	N34 26.856	W118 59.450	N34 26 51.39	W118 59 26.98
	SIPPP WP		335432.58N-1184314.60W	N 33.9090496	W 118.7207214	N33 54.543	W118 43.243	N33 54 32.58	W118 43 14.60
	STYFF WP		333118.00N-1182756.40W	N 33.5216667	W 118.4656667	N33 31.300	W118 27.940	N33 31 18.00	W118 27 56.40
AVNIS	TANDY WP		334447.67N-1183929.06W	N 33.7465750	W 118.6580722	N33 44.794	W118 39.484	N33 44 47.67	W118 39 29.06
	YORBS WP		342407.71N-1190235.65W	N 34.4021423	W 119.0432367	N34 24.129	W119 02.594	N34 24 07.71	W119 02 35.65

RS Results PCIFC

Last Evaluation: 30-Jun-2015 08:40:35

Reference Software Version: 1.5.2

Route Evaluation for GOONA:PCIFC:KLGB:RW12

PCIFC RNAV

GOONA:PCIFC:KLGB:RW12 Evaluation Results Part 1/2

Leg Tp	End Pt	Turn Tp	Alt Restr	Alt Restr 2	Spd Restr	Turn Ang	Leg Length	Min Seg Length
IF	GOONA		+30000.0				0.0	0.0
TF	GUDBY	FLY_BY	+28000.0			0.76	10.83	1.0
TF	YORBS	FLY_BY	+25000.0		280.0	0.45	8.62	1.0
TF	PCIFC	FLY_BY	+21000.0			25.13	14.26	9.13
TF	CRAYN	FLY_BY	+17000.0			0.31	9.53	9.13
TF	SIPPP	FLY_BY	+14000.0			0.0	10.64	1.0
TF	TANDY	FLY_BY	+13000.0	-14000.0		1.36	10.22	1.0
TF	OHSEA	FLY_BY				41.08	9.4	2.41
TF	STYFF	FLY_BY	-9000.0			30.85	8.28	4.27
TF	KAYNN	FLY_BY	-7000.0			62.86	6.71	4.14
TF	PADDR	FLY_BY	+3000.0	-6000.0		5.55	5.02	2.29
TF	QGATE	FLY_BY	+3000.0			37.93	7.65	1.56
TF	BREKE	FLY_BY	3000.0				3.34	1.56

GOONA:PCIFC:KLGB:RW12 Evaluation Results Part 2/2

Leg Tp	End Pt	Turn Tp	DTA1	DTA1 Turn Rad	DTA1 Turn Alt	DTA1 Turn Spd	DTA1 Bank Ang	DTA1 Tailwind	DTA1 True Airspd	DTA1 vGround	DTA2	DTA2 Turn Rad	DTA2 Turn Alt	DTA2 Turn Spd	DTA2 Bank Ang	DTA2 Tailwind	DTA2 True Airspd	DTA2 vGround
IF	GOONA				0.0	0.0							0.0	0.0				
TF	GUDBY	FLY_BY	0.0		30706.85	300.0	0.0	108.0	513.0	570.0	0.35	53.17	28000.0	300.0	5.0	102.0	488.0	565.0
TF	YORBS	FLY_BY	0.35	53.17	28000.0	300.0	5.0	102.0	488.0	565.0	0.19	47.85	25000.0	280.0	5.0	96.0	431.0	536.0
TF	PCIFC	FLY_BY	0.19	47.85	25000.0	280.0	5.0	96.0	431.0	536.0	9.13	40.98	21000.0	280.0	5.0	89.0	402.0	496.0
TF	CRAYN	FLY_BY	9.13	40.98	21000.0	280.0	5.0	89.0	402.0	496.0	0.5	182.07	18312.0	280.0	1.0	83.0	384.0	467.0
TF	SIPPP	FLY_BY	0.5	182.07	18312.0	280.0	1.0	83.0	384.0	467.0	0.0		15652.91	280.0	0.0	78.0	367.0	445.0
TF	TANDY	FLY_BY	0.0		15652.91	280.0	0.0	78.0	367.0	445.0	1.8	150.79	13097.33	280.0	1.0	73.0	352.0	425.0
TF	OHSEA	FLY_BY	1.8	150.79	13097.33	280.0	1.0	73.0	352.0	425.0	2.41	6.44	10747.58	280.0	20.54	68.0	339.0	407.0
TF	STYFF	FLY_BY	2.41	6.44	10747.58	280.0	20.54	68.0	339.0	407.0	1.86	6.73	8676.71	250.0	15.42	64.0	293.0	357.0
TF	KAYNN	FLY_BY	1.86	6.73	8676.71	250.0	15.42	64.0	293.0	357.0	2.29	3.74	7000.0	250.0	25.0	61.0	285.0	346.0
TF	PADDR	FLY_BY	2.29	3.74	7000.0	250.0	25.0	61.0	285.0	346.0	1.66	34.36	5747.03	250.0	2.77	58.0	280.0	338.0
TF	QGATE	FLY_BY	1.66	34.36	5747.03	250.0	2.77	58.0	280.0	338.0	1.56	4.53	3835.01	250.0	18.97	55.0	272.0	327.0
TF	BREKE	FLY_BY	1.56	4.53	3835.01	250.0	18.97	55.0	272.0	327.0	0.0		3000.0	250.0	0.0	53.0	268.0	321.0

GOONA:PCIFC:KLGB:RW12 Obstacle Evaluation

Start Pt	End Pt	Name	Source	AC (H/V (ft) AMSL)	Lat	Long	Height (ft) AMSL	Mnts Area	Pri/Sec Area	ROC (ft)	WCVH (ft)	MOCA (ft)	Min OCS Alt (ft)	Date
GOONA	GUDBY	TerrainPt_15_GOONA:PCIFC:KL GB:RW12_GOONA:GUDBY		4E (+- 250/+125)	N34° 37' 51.00"	W119° 16' 54.00"	7496.72	true	P	2000.0		9697	9696.72	30-Jun-2015 08:44:33
GUDBY	YORBS	TerrainPt_34_GOONA:PCIFC:KL GB:RW12_GUDBY:YORBS		4E (+- 250/+125)	N34° 30' 36.00"	W119° 04' 33.00"	6702.76	true	P	2000.0		8903	8902.76	30-Jun-2015 08:44:33
YORBS	PCIFC	TerrainPt_15_GOONA:PCIFC:KL GB:RW12_YORBS:PCIFC		4E (+- 250/+125)	N34° 27' 30.00"	W119° 00' 33.00"	5000.0	true	P	2000.0		7200	7200.0	30-Jun-2015 08:44:33
PCIFC	CRAYN	TerrainPt_17_GOONA:PCIFC:KL GB:RW12_PCIFC:CRAYN		4E (+- 250/+125)	N34° 05' 06.00"	W118° 47' 09.00"	2824.8	true	P	2000.0		5025	5024.8	30-Jun-2015 08:44:33
CRAYN	SIPPP	TerrainPt_0_GOONA:PCIFC:KL GB:RW12_CRAYN:SIPPP		4E (+- 250/+125)	N34° 05' 06.00"	W118° 47' 09.00"	2824.8	true	P	2000.0		5025	5024.8	30-Jun-2015 08:44:33
SIPPP	TANDY	UDO 22662	UDO	4D (+- 250/+50)	N33° 49' 37.23"	W118° 40' 38.73"	219.0	true	P	2000.0		2219	2219.0	23-Mar-2015 08:44:58
TANDY	OHSEA	UDO 22663	UDO	4D (+- 250/+50)	N33° 38' 40.33"	W118° 35' 55.03"	219.0	true	P	2000.0		2219	2219.0	23-Mar-2015 08:45:20
OHSEA	STYFF	NONE					-1.0	false	S					N/A
STYFF	KAYNN	UDO 45326	UDO	4D (+- 250/+50)	N33° 31' 52.17"	W118° 24' 18.95"	219.0	true	P	2000.0		2219	2219.0	23-Mar-2015 09:01:43
KAYNN	PADDR	UDO 22664	UDO	4D (+- 250/+50)	N33° 32' 55.93"	W118° 17' 10.78"	219.0	true	P	2000.0		2219	2219.0	23-Mar-2015 08:45:43
PADDR	QGATE	06-022790	AVNII	7E (+- 3038/+125)	N33° 43' 31.80"	W118° 15' 33.07"	420.0	true	P	2000.0		2420	2420.0	30-Jun-2015 08:40:58
QGATE	BREKE	06-022791	AVNII	7E (+- 3038/+125)	N33° 43' 32.45"	W118° 15' 32.69"	420.0	true	P	2000.0		2420	2420.0	30-Jun-2015 08:40:58

GOONA:PCIFC:KLGB:RW12 Criteria Failures

No failures.

Route Evaluation for GOONA:PCIFC:KLGB:RW25R,RW30

GOONA:PCIFC:KLGB:RW25R,RW30 Evaluation Results Part 1/2

Leg Tp	End Pt	Turn Tp	Alt Restr	Alt Restr 2	Spd Restr	Turn Ang	Leg Length	Min Seg Length
IF	GOONA		+30000.0				0.0	0.0
TF	GUDBY	FLY_BY	+28000.0			0.76	10.83	1.0
TF	YORBS	FLY_BY	+25000.0		280.0	0.45	8.62	1.0
TF	PCIFC	FLY_BY	+21000.0			25.13	14.26	9.13
TF	CRAYN	FLY_BY	+17000.0			0.31	9.53	9.13
TF	SIPPP	FLY_BY	+14000.0			0.0	10.64	1.0
TF	TANDY	FLY_BY	+13000.0	-14000.0		1.36	10.22	1.0
TF	OHSEA	FLY_BY				41.08	9.4	2.41
TF	STYFF	FLY_BY	-9000.0			30.85	8.28	4.27
TF	KAYNN	FLY_BY	-7000.0			22.75	6.71	3.6
TF	LAXBB	FLY_BY	-5000.0			0.13	8.27	1.74
TF	ALBAS	FLY_BY	4000.0			35.06	5.38	1.56
TF	EZKEL	FLY_OVER					2.0	1.56
FM							0.0	0.0

GOONA:PCIFC:KLGB:RW25R,RW30 Evaluation Results Part 2/2

Leg Tp	End Pt	Turn Tp	DTA1	DTA1 Turn Rad	DTA1 Turn Alt	DTA1 Turn Spd	DTA1 Bank Ang	DTA1 Tailwind	DTA1 True Airspd	DTA1 vGround	DTA2	DTA2 Turn Rad	DTA2 Turn Alt	DTA2 Turn Spd	DTA2 Bank Ang	DTA2 Tailwind	DTA2 True Airspd	DTA2 vGround
IF	GOONA				0.0	0.0							0.0	0.0				
TF	GUDBY	FLY_BY	0.0		30706.85	300.0	0.0	108.0	513.0	570.0	0.35	53.17	28000.0	300.0	5.0	102.0	488.0	565.0
TF	YORBS	FLY_BY	0.35	53.17	28000.0	300.0	5.0	102.0	488.0	565.0	0.19	47.85	25000.0	280.0	5.0	96.0	431.0	536.0
TF	PCIFC	FLY_BY	0.19	47.85	25000.0	280.0	5.0	96.0	431.0	536.0	9.13	40.98	21000.0	280.0	5.0	89.0	402.0	496.0
TF	CRAYN	FLY_BY	9.13	40.98	21000.0	280.0	5.0	89.0	402.0	496.0	0.5	182.07	18312.0	280.0	1.0	83.0	384.0	467.0
TF	SIPPP	FLY_BY	0.5	182.07	18312.0	280.0	1.0	83.0	384.0	467.0	0.0		15652.91	280.0	0.0	78.0	367.0	445.0
TF	TANDY	FLY_BY	0.0		15652.91	280.0	0.0	78.0	367.0	445.0	1.8	150.79	13097.33	280.0	1.0	73.0	352.0	425.0
TF	OHSEA	FLY_BY	1.8	150.79	13097.33	280.0	1.0	73.0	352.0	425.0	2.41	6.44	10747.58	280.0	20.54	68.0	339.0	407.0
TF	STYFF	FLY_BY	2.41	6.44	10747.58	280.0	20.54	68.0	339.0	407.0	1.86	6.73	8676.71	250.0	15.42	64.0	293.0	357.0
TF	KAYNN	FLY_BY	1.86	6.73	8676.71	250.0	15.42	64.0	293.0	357.0	1.74	8.67	7000.0	250.0	11.38	61.0	285.0	346.0
TF	LAXBB	FLY_BY	1.74	8.67	7000.0	250.0	11.38	61.0	285.0	346.0	0.1	92.57	5000.0	250.0	1.0	57.0	276.0	333.0
TF	ALBAS	FLY_BY	0.1	92.57	5000.0	250.0	1.0	57.0	276.0	333.0	1.56	4.93	4000.0	250.0	17.53	55.0	272.0	327.0
TF	EZKEL	FLY_OVER	1.56	4.93	4000.0	250.0	17.53	55.0	272.0	327.0	0.0		2200.0	250.0	0.0	51.0	265.0	316.0
FM			0.0		2200.0	250.0	0.0	51.0	265.0	316.0			0.0	0.0				

GOONA:PCIFC:KLGB:RW25R,RW30 Obstacle Evaluation

Start Pt	End Pt	Name	Source	AC (H/V (ft) AMSL)	Lat	Long	Height (ft) AMSL	Mnts Area	Pri/Sec Area	ROC (ft)	WCVH (ft)	MOCA (ft)	Min OCS Alt (ft)	Date
GOONA	GUDBY	TerrainPt_15_GOONA:PCIFC:KL GB:RW12_GOONA:GUDBY		4E (+- 250/+125)	N34° 37' 51.00"	W119° 16' 54.00"	7496.72	true	P	2000.0		9697	9696.72	30-Jun-2015 08:44:33
GUDBY	YORBS	TerrainPt_34_GOONA:PCIFC:KL GB:RW12_GUDBY:YORBS		4E (+- 250/+125)	N34° 30' 36.00"	W119° 04' 33.00"	6702.76	true	P	2000.0		8903	8902.76	30-Jun-2015 08:44:33
YORBS	PCIFC	TerrainPt_15_GOONA:PCIFC:KL GB:RW12_YORBS:PCIFC		4E (+- 250/+125)	N34° 27' 30.00"	W119° 00' 33.00"	5000.0	true	P	2000.0		7200	7200.0	30-Jun-2015 08:44:33
PCIFC	CRAYN	TerrainPt_17_GOONA:PCIFC:KL GB:RW12_PCIFC:CRAYN		4E (+- 250/+125)	N34° 05' 06.00"	W118° 47' 09.00"	2824.8	true	P	2000.0		5025	5024.8	30-Jun-2015 08:44:33
CRAYN	SIPPP	TerrainPt_0_GOONA:PCIFC:KL GB:RW12_CRAYN:SIPPP		4E (+- 250/+125)	N34° 05' 06.00"	W118° 47' 09.00"	2824.8	true	P	2000.0		5025	5024.8	30-Jun-2015 08:44:33
SIPPP	TANDY	UDO 22662	UDO	4D (+- 250/+50)	N33° 49' 37.23"	W118° 40' 38.73"	219.0	true	P	2000.0		2219	2219.0	23-Mar-2015 08:44:58
TANDY	OHSEA	UDO 22663	UDO	4D (+- 250/+50)	N33° 38' 40.33"	W118° 35' 55.03"	219.0	true	P	2000.0		2219	2219.0	23-Mar-2015 08:45:20
OHSEA	STYFF	NONE					-1.0	false	S					N/A
STYFF	KAYNN	UDO 45326	UDO	4D (+- 250/+50)	N33° 31' 52.17"	W118° 24' 18.95"	219.0	true	P	2000.0		2219	2219.0	23-Mar-2015 09:01:43
KAYNN	LAXBB	UDO 22664	UDO	4D (+- 250/+50)	N33° 32' 55.93"	W118° 17' 10.78"	219.0	true	P	2000.0		2219	2219.0	23-Mar-2015 08:45:43
LAXBB	ALBAS	UDO 79696	UDO	4D (+- 250/+50)	N33° 34' 36.72"	W118° 07' 08.85"	219.0	true	P	2000.0		2219	2219.0	30-Jun-2015 08:38:53
ALBAS	EZKEL	TerrainPt_888_GOONA:PCIFC:K LGB:RW25R,RW30_ALBAS:EZK EL		4E (+- 250/+125)	N33° 38' 30.00"	W118° 02' 42.00"	0.0	true	P	2000.0		2200	2200.0	30-Jun-2015 08:44:34

GOONA:PCIFC:KLGB:RW25R,RW30 Criteria Failures

No failures.

Route Evaluation for RDHOT:PCIFC:KLGB:RW12

RDHOT:PCIFC:KLGB:RW12 Evaluation Results Part 1/2

Leg Tp	End Pt	Turn Tp	Alt Restr	Alt Restr 2	Spd Restr	Turn Ang	Leg Length	Min Seg Length
IF	RDHOT						0.0	0.0
TF	ELLBC	FLY_BY				5.83	40.9	1.0
TF	GOONA	FLY_BY	+30000.0			0.26	36.21	1.0
TF	GUDBY	FLY_BY	+28000.0			0.76	10.83	1.0
TF	YORBS	FLY_BY	+25000.0		280.0	0.45	8.62	1.0
TF	PCIFC	FLY_BY	+21000.0			25.13	14.26	9.13
TF	CRAYN	FLY_BY	+17000.0			0.31	9.53	9.13
TF	SIPPP	FLY_BY	+14000.0			0.0	10.64	1.0
TF	TANDY	FLY_BY	+13000.0	-14000.0		1.36	10.22	1.0
TF	OHSEA	FLY_BY				41.08	9.4	2.41
TF	STYFF	FLY_BY	-9000.0			30.85	8.28	4.27
TF	KAYNN	FLY_BY	-7000.0			62.86	6.71	4.14
TF	PADDR	FLY_BY	+3000.0	-6000.0		5.55	5.02	2.29
TF	QGATE	FLY_BY	+3000.0			37.93	7.65	1.56
TF	BREKE	FLY_BY	3000.0				3.34	1.56

RDHOT:PCIFC:KLGB:RW12 Evaluation Results Part 2/2

Leg Tp	End Pt	Turn Tp	DTA1	DTA1 Turn Rad	DTA1 Turn Alt	DTA1 Turn Spd	DTA1 Bank Ang	DTA1 Tailwind	DTA1 True Airspd	DTA1 vGround	DTA2	DTA2 Turn Rad	DTA2 Turn Alt	DTA2 Turn Spd	DTA2 Bank Ang	DTA2 Tailwind	DTA2 True Airspd	DTA2 vGround
IF	RDHOT				0.0	0.0							0.0	0.0				
TF	ELLBC	FLY_BY	0.0		41000.0	300.0	0.0	128.0	629.0	570.0	2.76	54.11	39758.27	300.0	5.0	126.0	613.0	570.0
TF	GOONA	FLY_BY	2.76	54.11	39758.27	300.0	5.0	126.0	613.0	570.0	0.12	54.11	30706.85	300.0	5.0	108.0	513.0	570.0
TF	GUDBY	FLY_BY	0.12	54.11	30706.85	300.0	5.0	108.0	513.0	570.0	0.35	53.17	28000.0	300.0	5.0	102.0	488.0	565.0
TF	YORBS	FLY_BY	0.35	53.17	28000.0	300.0	5.0	102.0	488.0	565.0	0.19	47.85	25000.0	280.0	5.0	96.0	431.0	536.0
TF	PCIFC	FLY_BY	0.19	47.85	25000.0	280.0	5.0	96.0	431.0	536.0	9.13	40.98	21000.0	280.0	5.0	89.0	402.0	496.0
TF	CRAYN	FLY_BY	9.13	40.98	21000.0	280.0	5.0	89.0	402.0	496.0	0.5	182.07	18312.0	280.0	1.0	83.0	384.0	467.0
TF	SIPPP	FLY_BY	0.5	182.07	18312.0	280.0	1.0	83.0	384.0	467.0	0.0		15652.91	280.0	0.0	78.0	367.0	445.0
TF	TANDY	FLY_BY	0.0		15652.91	280.0	0.0	78.0	367.0	445.0	1.8	150.79	13097.33	280.0	1.0	73.0	352.0	425.0
TF	OHSEA	FLY_BY	1.8	150.79	13097.33	280.0	1.0	73.0	352.0	425.0	2.41	6.44	10747.58	280.0	20.54	68.0	339.0	407.0
TF	STYFF	FLY_BY	2.41	6.44	10747.58	280.0	20.54	68.0	339.0	407.0	1.86	6.73	8676.71	250.0	15.42	64.0	293.0	357.0
TF	KAYNN	FLY_BY	1.86	6.73	8676.71	250.0	15.42	64.0	293.0	357.0	2.29	3.74	7000.0	250.0	25.0	61.0	285.0	346.0
TF	PADDR	FLY_BY	2.29	3.74	7000.0	250.0	25.0	61.0	285.0	346.0	1.66	34.36	5747.03	250.0	2.77	58.0	280.0	338.0
TF	QGATE	FLY_BY	1.66	34.36	5747.03	250.0	2.77	58.0	280.0	338.0	1.56	4.53	3835.01	250.0	18.97	55.0	272.0	327.0
TF	BREKE	FLY_BY	1.56	4.53	3835.01	250.0	18.97	55.0	272.0	327.0	0.0		3000.0	250.0	0.0	53.0	268.0	321.0

RDHOT:PCIFC:KLGB:RW12 Obstacle Evaluation

Start Pt	End Pt	Name	Source	AC (H/V (ft) AMSL)	Lat	Long	Height (ft) AMSL	Mnts Area	Pri/Sec Area	ROC (ft)	WCVH (ft)	MOCA (ft)	Min OCS Alt (ft)	Date
RDHOT	ELLBC	TerrainPt_10_RDHOT:PCIFC:KL GB:RW12_RDHOT:ELLBC		4E (+- 250/+125)	N35° 03' 21.00"	W119° 47' 09.00"	4616.14	true	P	2000.0		6817	6816.14	30-Jun-2015 08:44:34
ELLBC	GOONA	TerrainPt_1_RDHOT:PCIFC:KLG B:RW12_ELLBC:GOONA		4E (+- 250/+125)	N34° 37' 54.00"	W119° 16' 54.00"	7496.72	true	P	2000.0		9697	9696.72	30-Jun-2015 08:44:34
GOONA	GUDBY	TerrainPt_15_GOONA:PCIFC:KL GB:RW12_GOONA:GUDBY		4E (+- 250/+125)	N34° 37' 51.00"	W119° 16' 54.00"	7496.72	true	P	2000.0		9697	9696.72	30-Jun-2015 08:44:33
GUDBY	YORBS	TerrainPt_34_GOONA:PCIFC:KL GB:RW12_GUDBY:YORBS		4E (+- 250/+125)	N34° 30' 36.00"	W119° 04' 33.00"	6702.76	true	P	2000.0		8903	8902.76	30-Jun-2015 08:44:33
YORBS	PCIFC	TerrainPt_15_GOONA:PCIFC:KL GB:RW12_YORBS:PCIFC		4E (+- 250/+125)	N34° 27' 30.00"	W119° 00' 33.00"	5000.0	true	P	2000.0		7200	7200.0	30-Jun-2015 08:44:33
PCIFC	CRAYN	TerrainPt_17_GOONA:PCIFC:KL GB:RW12_PCIFC:CRAYN		4E (+- 250/+125)	N34° 05' 06.00"	W118° 47' 09.00"	2824.8	true	P	2000.0		5025	5024.8	30-Jun-2015 08:44:33
CRAYN	SIPPP	TerrainPt_0_GOONA:PCIFC:KL GB:RW12_CRAYN:SIPPP		4E (+- 250/+125)	N34° 05' 06.00"	W118° 47' 09.00"	2824.8	true	P	2000.0		5025	5024.8	30-Jun-2015 08:44:33
SIPPP	TANDY	UDO 22662	UDO	4D (+- 250/+50)	N33° 49' 37.23"	W118° 40' 38.73"	219.0	true	P	2000.0		2219	2219.0	23-Mar-2015 08:44:58
TANDY	OHSEA	UDO 22663	UDO	4D (+- 250/+50)	N33° 38' 40.33"	W118° 35' 55.03"	219.0	true	P	2000.0		2219	2219.0	23-Mar-2015 08:45:20
OHSEA	STYFF	NONE					-1.0	false	S					N/A
STYFF	KAYNN	UDO 45326	UDO	4D (+- 250/+50)	N33° 31' 52.17"	W118° 24' 18.95"	219.0	true	P	2000.0		2219	2219.0	23-Mar-2015 09:01:43
KAYNN	PADDR	UDO 22664	UDO	4D (+- 250/+50)	N33° 32' 55.93"	W118° 17' 10.78"	219.0	true	P	2000.0		2219	2219.0	23-Mar-2015 08:45:43
PADDR	QGATE	06-022790	AVNII	7E (+- 3038/+125)	N33° 43' 31.80"	W118° 15' 33.07"	420.0	true	P	2000.0		2420	2420.0	30-Jun-2015 08:40:58
QGATE	BREKE	06-022791	AVNII	7E (+- 3038/+125)	N33° 43' 32.45"	W118° 15' 32.69"	420.0	true	P	2000.0		2420	2420.0	30-Jun-2015 08:40:58

RDHOT:PCIFC:KLGB:RW12 Criteria Failures

No failures.

Route Evaluation for RDHOT:PCIFC:KLGB:RW25R,RW30

RDHOT:PCIFC:KLGB:RW25R,RW30 Evaluation Results Part 1/2

Leg Tp	End Pt	Turn Tp	Alt Restr	Alt Restr 2	Spd Restr	Turn Ang	Leg Length	Min Seg Length
IF	RDHOT						0.0	0.0
TF	ELLBC	FLY_BY				5.83	40.9	1.0
TF	GOONA	FLY_BY	+30000.0			0.26	36.21	1.0
TF	GUDBY	FLY_BY	+28000.0			0.76	10.83	1.0
TF	YORBS	FLY_BY	+25000.0		280.0	0.45	8.62	1.0
TF	PCIFC	FLY_BY	+21000.0			25.13	14.26	9.13
TF	CRAYN	FLY_BY	+17000.0			0.31	9.53	9.13
TF	SIPPP	FLY_BY	+14000.0			0.0	10.64	1.0
TF	TANDY	FLY_BY	+13000.0	-14000.0		1.36	10.22	1.0
TF	OHSEA	FLY_BY				41.08	9.4	2.41
TF	STYFF	FLY_BY	-9000.0			30.85	8.28	4.27
TF	KAYNN	FLY_BY	-7000.0			22.75	6.71	3.6
TF	LAXBB	FLY_BY	-5000.0			0.13	8.27	1.74
TF	ALBAS	FLY_BY	4000.0			35.06	5.38	1.56
TF	EZKEL	FLY_OVER					2.0	1.56
FM							0.0	0.0

RDHOT:PCIFC:KLGB:RW25R,RW30 Evaluation Results Part 2/2

Leg Tp	End Pt	Turn Tp	DTA1	DTA1 Turn Rad	DTA1 Turn Alt	DTA1 Turn Spd	DTA1 Bank Ang	DTA1 Tailwind	DTA1 True Airspd	DTA1 vGround	DTA2	DTA2 Turn Rad	DTA2 Turn Alt	DTA2 Turn Spd	DTA2 Bank Ang	DTA2 Tailwind	DTA2 True Airspd	DTA2 vGround
IF	RDHOT				0.0	0.0							0.0	0.0				
TF	ELLBC	FLY_BY	0.0		41000.0	300.0	0.0	128.0	629.0	570.0	2.76	54.11	39758.27	300.0	5.0	126.0	613.0	570.0
TF	GOONA	FLY_BY	2.76	54.11	39758.27	300.0	5.0	126.0	613.0	570.0	0.12	54.11	30706.85	300.0	5.0	108.0	513.0	570.0
TF	GUDBY	FLY_BY	0.12	54.11	30706.85	300.0	5.0	108.0	513.0	570.0	0.35	53.17	28000.0	300.0	5.0	102.0	488.0	565.0
TF	YORBS	FLY_BY	0.35	53.17	28000.0	300.0	5.0	102.0	488.0	565.0	0.19	47.85	25000.0	280.0	5.0	96.0	431.0	536.0
TF	PCIFC	FLY_BY	0.19	47.85	25000.0	280.0	5.0	96.0	431.0	536.0	9.13	40.98	21000.0	280.0	5.0	89.0	402.0	496.0
TF	CRAYN	FLY_BY	9.13	40.98	21000.0	280.0	5.0	89.0	402.0	496.0	0.5	182.07	18312.0	280.0	1.0	83.0	384.0	467.0
TF	SIPPP	FLY_BY	0.5	182.07	18312.0	280.0	1.0	83.0	384.0	467.0	0.0		15652.91	280.0	0.0	78.0	367.0	445.0
TF	TANDY	FLY_BY	0.0		15652.91	280.0	0.0	78.0	367.0	445.0	1.8	150.79	13097.33	280.0	1.0	73.0	352.0	425.0
TF	OHSEA	FLY_BY	1.8	150.79	13097.33	280.0	1.0	73.0	352.0	425.0	2.41	6.44	10747.58	280.0	20.54	68.0	339.0	407.0
TF	STYFF	FLY_BY	2.41	6.44	10747.58	280.0	20.54	68.0	339.0	407.0	1.86	6.73	8676.71	250.0	15.42	64.0	293.0	357.0
TF	KAYNN	FLY_BY	1.86	6.73	8676.71	250.0	15.42	64.0	293.0	357.0	1.74	8.67	7000.0	250.0	11.38	61.0	285.0	346.0
TF	LAXBB	FLY_BY	1.74	8.67	7000.0	250.0	11.38	61.0	285.0	346.0	0.1	92.57	5000.0	250.0	1.0	57.0	276.0	333.0
TF	ALBAS	FLY_BY	0.1	92.57	5000.0	250.0	1.0	57.0	276.0	333.0	1.56	4.93	4000.0	250.0	17.53	55.0	272.0	327.0
TF	EZKEL	FLY_OVER	1.56	4.93	4000.0	250.0	17.53	55.0	272.0	327.0	0.0		2200.0	250.0	0.0	51.0	265.0	316.0
FM			0.0		2200.0	250.0	0.0	51.0	265.0	316.0			0.0	0.0				

RDHOT:PCIFC:KLGB:RW25R,RW30 Obstacle Evaluation

Start Pt	End Pt	Name	Source	AC (H/V (ft) AMSL)	Lat	Long	Height (ft) AMSL	Mnts Area	Pri/Sec Area	ROC (ft)	WCVH (ft)	MOCA (ft)	Min OCS Alt (ft)	Date
RDHOT	ELLBC	TerrainPt_10_RDHOT:PCIFC:KL GB:RW12_RDHOT:ELLBC		4E (+- 250/+125)	N35° 03' 21.00"	W119° 47' 09.00"	4616.14	true	P	2000.0		6817	6816.14	30-Jun-2015 08:44:34
ELLBC	GOONA	TerrainPt_1_RDHOT:PCIFC:KLG B:RW12_ELLBC:GOONA		4E (+- 250/+125)	N34° 37' 54.00"	W119° 16' 54.00"	7496.72	true	P	2000.0		9697	9696.72	30-Jun-2015 08:44:34
GOONA	GUDBY	TerrainPt_15_GOONA:PCIFC:KL GB:RW12_GOONA:GUDBY		4E (+- 250/+125)	N34° 37' 51.00"	W119° 16' 54.00"	7496.72	true	P	2000.0		9697	9696.72	30-Jun-2015 08:44:33
GUDBY	YORBS	TerrainPt_34_GOONA:PCIFC:KL GB:RW12_GUDBY:YORBS		4E (+- 250/+125)	N34° 30' 36.00"	W119° 04' 33.00"	6702.76	true	P	2000.0		8903	8902.76	30-Jun-2015 08:44:33
YORBS	PCIFC	TerrainPt_15_GOONA:PCIFC:KL GB:RW12_YORBS:PCIFC		4E (+- 250/+125)	N34° 27' 30.00"	W119° 00' 33.00"	5000.0	true	P	2000.0		7200	7200.0	30-Jun-2015 08:44:33
PCIFC	CRAYN	TerrainPt_17_GOONA:PCIFC:KL GB:RW12_PCIFC:CRAYN		4E (+- 250/+125)	N34° 05' 06.00"	W118° 47' 09.00"	2824.8	true	P	2000.0		5025	5024.8	30-Jun-2015 08:44:33
CRAYN	SIPPP	TerrainPt_0_GOONA:PCIFC:KL GB:RW12_CRAYN:SIPPP		4E (+- 250/+125)	N34° 05' 06.00"	W118° 47' 09.00"	2824.8	true	P	2000.0		5025	5024.8	30-Jun-2015 08:44:33
SIPPP	TANDY	UDO 22662	UDO	4D (+- 250/+50)	N33° 49' 37.23"	W118° 40' 38.73"	219.0	true	P	2000.0		2219	2219.0	23-Mar-2015 08:44:58
TANDY	OHSEA	UDO 22663	UDO	4D (+- 250/+50)	N33° 38' 40.33"	W118° 35' 55.03"	219.0	true	P	2000.0		2219	2219.0	23-Mar-2015 08:45:20
OHSEA	STYFF	NONE					-1.0	false	S					N/A
STYFF	KAYNN	UDO 45326	UDO	4D (+- 250/+50)	N33° 31' 52.17"	W118° 24' 18.95"	219.0	true	P	2000.0		2219	2219.0	23-Mar-2015 09:01:43
KAYNN	LAXBB	UDO 22664	UDO	4D (+- 250/+50)	N33° 32' 55.93"	W118° 17' 10.78"	219.0	true	P	2000.0		2219	2219.0	23-Mar-2015 08:45:43
LAXBB	ALBAS	UDO 79696	UDO	4D (+- 250/+50)	N33° 34' 36.72"	W118° 07' 08.85"	219.0	true	P	2000.0		2219	2219.0	30-Jun-2015 08:38:53
ALBAS	EZKEL	TerrainPt_888_GOONA:PCIFC:K LGB:RW25R,RW30_ALBAS:EZK EL		4E (+- 250/+125)	N33° 38' 30.00"	W118° 02' 42.00"	0.0	true	P	2000.0		2200	2200.0	30-Jun-2015 08:44:34

RDHOT:PCIFC:KLGB:RW25R,RW30 Criteria Failures

No failures.

Route Evaluation for REBRG:PCIFC:KLGB:RW12

REBRG:PCIFC:KLGB:RW12 Evaluation Results Part 1/2

Leg Tp	End Pt	Turn Tp	Alt Restr	Alt Restr 2	Spd Restr	Turn Ang	Leg Length	Min Seg Length
IF	REBRG						0.0	0.0
TF	MMTLY	FLY_BY				33.73	19.63	16.4
TF	REESR	FLY_BY	+30000.0			3.68	60.53	16.4
TF	RCHEL	FLY_BY	+28000.0			0.52	10.78	1.0
TF	SHOLN	FLY_BY	+25000.0		280.0	0.71	8.8	1.0
TF	PCIFC	FLY_BY	+21000.0			10.54	14.93	3.78
TF	CRAYN	FLY_BY	+17000.0			0.31	9.53	3.78
TF	SIPPP	FLY_BY	+14000.0			0.0	10.64	1.0
TF	TANDY	FLY_BY	+13000.0	-14000.0		1.36	10.22	1.0
TF	OHSEA	FLY_BY				41.08	9.4	2.41
TF	STYFF	FLY_BY	-9000.0			30.85	8.28	4.27
TF	KAYNN	FLY_BY	-7000.0			62.86	6.71	4.14
TF	PADDR	FLY_BY	+3000.0	-6000.0		5.55	5.02	2.29
TF	QGATE	FLY_BY	+3000.0			37.93	7.65	1.56
TF	BREKE	FLY_BY	3000.0				3.34	1.56

REBRG:PCIFC:KLGB:RW12 Evaluation Results Part 2/2

Leg Tp	End Pt	Turn Tp	DTA1	DTA1 Turn Rad	DTA1 Turn Alt	DTA1 Turn Spd	DTA1 Bank Ang	DTA1 Tailwind	DTA1 True Airspd	DTA1 vGround	DTA2	DTA2 Turn Rad	DTA2 Turn Alt	DTA2 Turn Spd	DTA2 Bank Ang	DTA2 Tailwind	DTA2 True Airspd	DTA2 vGround
IF	REBRG				0.0	0.0							0.0	0.0				
TF	MMTLY	FLY_BY	0.0		41000.0	300.0	0.0	128.0	629.0	570.0	16.4	54.11	41000.0	300.0	5.0	128.0	629.0	570.0
TF	REESR	FLY_BY	16.4	54.11	41000.0	300.0	5.0	128.0	629.0	570.0	1.74	54.11	30695.57	300.0	5.0	108.0	513.0	570.0
TF	RCHEL	FLY_BY	1.74	54.11	30695.57	300.0	5.0	108.0	513.0	570.0	0.24	53.17	28000.0	300.0	5.0	102.0	488.0	565.0
TF	SHOLN	FLY_BY	0.24	53.17	28000.0	300.0	5.0	102.0	488.0	565.0	0.3	47.85	25000.0	280.0	5.0	96.0	431.0	536.0
TF	PCIFC	FLY_BY	0.3	47.85	25000.0	280.0	5.0	96.0	431.0	536.0	3.78	40.98	21000.0	280.0	5.0	89.0	402.0	496.0
TF	CRAYN	FLY_BY	3.78	40.98	21000.0	280.0	5.0	89.0	402.0	496.0	0.5	182.07	18312.0	280.0	1.0	83.0	384.0	467.0
TF	SIPPP	FLY_BY	0.5	182.07	18312.0	280.0	1.0	83.0	384.0	467.0	0.0		15652.91	280.0	0.0	78.0	367.0	445.0
TF	TANDY	FLY_BY	0.0		15652.91	280.0	0.0	78.0	367.0	445.0	1.8	150.79	13097.33	280.0	1.0	73.0	352.0	425.0
TF	OHSEA	FLY_BY	1.8	150.79	13097.33	280.0	1.0	73.0	352.0	425.0	2.41	6.44	10747.58	280.0	20.54	68.0	339.0	407.0
TF	STYFF	FLY_BY	2.41	6.44	10747.58	280.0	20.54	68.0	339.0	407.0	1.86	6.73	8676.71	250.0	15.42	64.0	293.0	357.0
TF	KAYNN	FLY_BY	1.86	6.73	8676.71	250.0	15.42	64.0	293.0	357.0	2.29	3.74	7000.0	250.0	25.0	61.0	285.0	346.0
TF	PADDR	FLY_BY	2.29	3.74	7000.0	250.0	25.0	61.0	285.0	346.0	1.66	34.36	5747.03	250.0	2.77	58.0	280.0	338.0
TF	QGATE	FLY_BY	1.66	34.36	5747.03	250.0	2.77	58.0	280.0	338.0	1.56	4.53	3835.01	250.0	18.97	55.0	272.0	327.0
TF	BREKE	FLY_BY	1.56	4.53	3835.01	250.0	18.97	55.0	272.0	327.0	0.0		3000.0	250.0	0.0	53.0	268.0	321.0

REBRG:PCIFC:KLGB:RW12 Obstacle Evaluation

Start Pt	End Pt	Name	Source	AC (H/V (ft) AMSL)	Lat	Long	Height (ft) AMSL	Mnts Area	Pri/Sec Area	ROC (ft)	WCVH (ft)	MOCA (ft)	Min OCS Alt (ft)	Date
REBRG	MMTLY	TerrainPt_39_REBRG:PCIFC:KLGB:RW12_REBRG:MMTLY		4E (+-250/+125)	N35° 38' 57.00"	W119° 45' 27.00"	465.88	true	P	2000.0		2666	2665.88	30-Jun-2015 08:44:35
MMTLY	REESR	TerrainPt_6_REBRG:PCIFC:KLGB:RW12_MMTLY:REESR		4E (+-250/+125)	N34° 48' 48.00"	W119° 10' 03.00"	8815.62	true	P	2000.0		11016	11015.62	30-Jun-2015 08:44:35
REESR	RCHEL	TerrainPt_47_REESR:PCIFC:KLGB:RW12_REESR:RCHEL		4E (+-250/+125)	N34° 48' 48.00"	W119° 10' 03.00"	8815.62	true	P	2000.0		11016	11015.62	30-Jun-2015 08:44:37
RCHEL	SHOLN	TerrainPt_34_REBRG:PCIFC:KLGB:RW12_RCHEL:SHOLN		4E (+-250/+125)	N34° 30' 36.00"	W119° 04' 33.00"	6702.76	true	P	2000.0		8903	8902.76	30-Jun-2015 08:44:35
SHOLN	PCIFC	TerrainPt_11_REBRG:PCIFC:KLGB:RW12_SHOLN:PCIFC		4E (+-250/+125)	N34° 28' 09.00"	W119° 01' 27.00"	5045.93	true	P	2000.0		7246	7245.93	30-Jun-2015 08:44:35
PCIFC	CRAYN	TerrainPt_17_GOONA:PCIFC:KLGB:RW12_PCIFC:CRAYN		4E (+-250/+125)	N34° 05' 06.00"	W118° 47' 09.00"	2824.8	true	P	2000.0		5025	5024.8	30-Jun-2015 08:44:33
CRAYN	SIPPP	TerrainPt_0_GOONA:PCIFC:KLGB:RW12_CRAYN:SIPPP		4E (+-250/+125)	N34° 05' 06.00"	W118° 47' 09.00"	2824.8	true	P	2000.0		5025	5024.8	30-Jun-2015 08:44:33
SIPPP	TANDY	UDO 22662	UDO	4D (+-250/+50)	N33° 49' 37.23"	W118° 40' 38.73"	219.0	true	P	2000.0		2219	2219.0	23-Mar-2015 08:44:58
TANDY	OHSEA	UDO 22663	UDO	4D (+-250/+50)	N33° 38' 40.33"	W118° 35' 55.03"	219.0	true	P	2000.0		2219	2219.0	23-Mar-2015 08:45:20
OHSEA	STYFF	NONE					-1.0	false	S					N/A
STYFF	KAYNN	UDO 45326	UDO	4D (+-250/+50)	N33° 31' 52.17"	W118° 24' 18.95"	219.0	true	P	2000.0		2219	2219.0	23-Mar-2015 09:01:43
KAYNN	PADDR	UDO 22664	UDO	4D (+-250/+50)	N33° 32' 55.93"	W118° 17' 10.78"	219.0	true	P	2000.0		2219	2219.0	23-Mar-2015 08:45:43
PADDR	QGATE	06-022790	AVNII	7E (+-3038/+125)	N33° 43' 31.80"	W118° 15' 33.07"	420.0	true	P	2000.0		2420	2420.0	30-Jun-2015 08:40:58
QGATE	BREKE	06-022791	AVNII	7E (+-3038/+125)	N33° 43' 32.45"	W118° 15' 32.69"	420.0	true	P	2000.0		2420	2420.0	30-Jun-2015 08:40:58

REBRG:PCIFC:KLGB:RW12 Criteria Failures

No failures.

Route Evaluation for REBRG:PCIFC:KLGB:RW25R,RW30

REBRG:PCIFC:KLGB:RW25R,RW30 Evaluation Results Part 1/2

Leg Tp	End Pt	Turn Tp	Alt Restr	Alt Restr 2	Spd Restr	Turn Ang	Leg Length	Min Seg Length
IF	REBRG						0.0	0.0
TF	MMTLY	FLY_BY				33.73	19.63	16.4
TF	REESR	FLY_BY	+30000.0			3.68	60.53	16.4
TF	RCHEL	FLY_BY	+28000.0			0.52	10.78	1.0
TF	SHOLN	FLY_BY	+25000.0		280.0	0.71	8.8	1.0
TF	PCIFC	FLY_BY	+21000.0			10.54	14.93	3.78
TF	CRAYN	FLY_BY	+17000.0			0.31	9.53	3.78
TF	SIPPP	FLY_BY	+14000.0			0.0	10.64	1.0
TF	TANDY	FLY_BY	+13000.0	-14000.0		1.36	10.22	1.0
TF	OHSEA	FLY_BY				41.08	9.4	2.41
TF	STYFF	FLY_BY	-9000.0			30.85	8.28	4.27
TF	KAYNN	FLY_BY	-7000.0			22.75	6.71	3.6
TF	LAXBB	FLY_BY	-5000.0			0.13	8.27	1.74
TF	ALBAS	FLY_BY	4000.0			35.06	5.38	1.56
TF	EZKEL	FLY_OVER					2.0	1.56
FM							0.0	0.0

REBRG:PCIFC:KLGB:RW25R,RW30 Evaluation Results Part 2/2

Leg Tp	End Pt	Turn Tp	DTA1	DTA1 Turn Rad	DTA1 Turn Alt	DTA1 Turn Spd	DTA1 Bank Ang	DTA1 Tailwind	DTA1 True Airspd	DTA1 vGround	DTA2	DTA2 Turn Rad	DTA2 Turn Alt	DTA2 Turn Spd	DTA2 Bank Ang	DTA2 Tailwind	DTA2 True Airspd	DTA2 vGround
IF	REBRG				0.0	0.0							0.0	0.0				
TF	MMTLY	FLY_BY	0.0		41000.0	300.0	0.0	128.0	629.0	570.0	16.4	54.11	41000.0	300.0	5.0	128.0	629.0	570.0
TF	REESR	FLY_BY	16.4	54.11	41000.0	300.0	5.0	128.0	629.0	570.0	1.74	54.11	30695.57	300.0	5.0	108.0	513.0	570.0
TF	RCHEL	FLY_BY	1.74	54.11	30695.57	300.0	5.0	108.0	513.0	570.0	0.24	53.17	28000.0	300.0	5.0	102.0	488.0	565.0
TF	SHOLN	FLY_BY	0.24	53.17	28000.0	300.0	5.0	102.0	488.0	565.0	0.3	47.85	25000.0	280.0	5.0	96.0	431.0	536.0
TF	PCIFC	FLY_BY	0.3	47.85	25000.0	280.0	5.0	96.0	431.0	536.0	3.78	40.98	21000.0	280.0	5.0	89.0	402.0	496.0
TF	CRAYN	FLY_BY	3.78	40.98	21000.0	280.0	5.0	89.0	402.0	496.0	0.5	182.07	18312.0	280.0	1.0	83.0	384.0	467.0
TF	SIPPP	FLY_BY	0.5	182.07	18312.0	280.0	1.0	83.0	384.0	467.0	0.0		15652.91	280.0	0.0	78.0	367.0	445.0
TF	TANDY	FLY_BY	0.0		15652.91	280.0	0.0	78.0	367.0	445.0	1.8	150.79	13097.33	280.0	1.0	73.0	352.0	425.0
TF	OHSEA	FLY_BY	1.8	150.79	13097.33	280.0	1.0	73.0	352.0	425.0	2.41	6.44	10747.58	280.0	20.54	68.0	339.0	407.0
TF	STYFF	FLY_BY	2.41	6.44	10747.58	280.0	20.54	68.0	339.0	407.0	1.86	6.73	8676.71	250.0	15.42	64.0	293.0	357.0
TF	KAYNN	FLY_BY	1.86	6.73	8676.71	250.0	15.42	64.0	293.0	357.0	1.74	8.67	7000.0	250.0	11.38	61.0	285.0	346.0
TF	LAXBB	FLY_BY	1.74	8.67	7000.0	250.0	11.38	61.0	285.0	346.0	0.1	92.57	5000.0	250.0	1.0	57.0	276.0	333.0
TF	ALBAS	FLY_BY	0.1	92.57	5000.0	250.0	1.0	57.0	276.0	333.0	1.56	4.93	4000.0	250.0	17.53	55.0	272.0	327.0
TF	EZKEL	FLY_OVER	1.56	4.93	4000.0	250.0	17.53	55.0	272.0	327.0	0.0		2200.0	250.0	0.0	51.0	265.0	316.0
FM			0.0		2200.0	250.0	0.0	51.0	265.0	316.0			0.0	0.0				

REBRG:PCIFC:KLGB:RW25R,RW30 Obstacle Evaluation

Start Pt	End Pt	Name	Source	AC (H/V (ft) AMSL)	Lat	Long	Height (ft) AMSL	Mnts Area	Pri/Sec Area	ROC (ft)	WCVH (ft)	MOCA (ft)	Min OCS Alt (ft)	Date
REBRG	MMTLY	TerrainPt_39_REBRG:PCIFC:KLGB:RW12_REBRG:MMTLY		4E (+-250/+125)	N35° 38' 57.00"	W119° 45' 27.00"	465.88	true	P	2000.0		2666	2665.88	30-Jun-2015 08:44:35
MMTLY	REESR	TerrainPt_6_REBRG:PCIFC:KLGB:RW12_MMTLY:REESR		4E (+-250/+125)	N34° 48' 48.00"	W119° 10' 03.00"	8815.62	true	P	2000.0		11016	11015.62	30-Jun-2015 08:44:35
REESR	RCHEL	TerrainPt_47_REESR:PCIFC:KLGB:RW12_REESR:RCHEL		4E (+-250/+125)	N34° 48' 48.00"	W119° 10' 03.00"	8815.62	true	P	2000.0		11016	11015.62	30-Jun-2015 08:44:37
RCHEL	SHOLN	TerrainPt_34_REBRG:PCIFC:KLGB:RW12_RCHEL:SHOLN		4E (+-250/+125)	N34° 30' 36.00"	W119° 04' 33.00"	6702.76	true	P	2000.0		8903	8902.76	30-Jun-2015 08:44:35
SHOLN	PCIFC	TerrainPt_11_REBRG:PCIFC:KLGB:RW12_SHOLN:PCIFC		4E (+-250/+125)	N34° 28' 09.00"	W119° 01' 27.00"	5045.93	true	P	2000.0		7246	7245.93	30-Jun-2015 08:44:35
PCIFC	CRAYN	TerrainPt_17_GOONA:PCIFC:KLGB:RW12_PCIFC:CRAYN		4E (+-250/+125)	N34° 05' 06.00"	W118° 47' 09.00"	2824.8	true	P	2000.0		5025	5024.8	30-Jun-2015 08:44:33
CRAYN	SIPPP	TerrainPt_0_GOONA:PCIFC:KLGB:RW12_CRAYN:SIPPP		4E (+-250/+125)	N34° 05' 06.00"	W118° 47' 09.00"	2824.8	true	P	2000.0		5025	5024.8	30-Jun-2015 08:44:33
SIPPP	TANDY	UDO 22662	UDO	4D (+-250/+50)	N33° 49' 37.23"	W118° 40' 38.73"	219.0	true	P	2000.0		2219	2219.0	23-Mar-2015 08:44:58
TANDY	OHSEA	UDO 22663	UDO	4D (+-250/+50)	N33° 38' 40.33"	W118° 35' 55.03"	219.0	true	P	2000.0		2219	2219.0	23-Mar-2015 08:45:20
OHSEA	STYFF	NONE					-1.0	false	S					N/A
STYFF	KAYNN	UDO 45326	UDO	4D (+-250/+50)	N33° 31' 52.17"	W118° 24' 18.95"	219.0	true	P	2000.0		2219	2219.0	23-Mar-2015 09:01:43
KAYNN	LAXBB	UDO 22664	UDO	4D (+-250/+50)	N33° 32' 55.93"	W118° 17' 10.78"	219.0	true	P	2000.0		2219	2219.0	23-Mar-2015 08:45:43
LAXBB	ALBAS	UDO 79696	UDO	4D (+-250/+50)	N33° 34' 36.72"	W118° 07' 08.85"	219.0	true	P	2000.0		2219	2219.0	30-Jun-2015 08:38:53
ALBAS	EZKEL	TerrainPt_888_GOONA:PCIFC:KLGB:RW25R,RW30_ALBAS:EZKEL		4E (+-250/+125)	N33° 38' 30.00"	W118° 02' 42.00"	0.0	true	P	2000.0		2200	2200.0	30-Jun-2015 08:44:34

REBRG:PCIFC:KLGB:RW25R,RW30 Criteria Failures

No failures.

Route Evaluation for REESR:PCIFC:KLGB:RW12

REESR:PCIFC:KLGB:RW12 Evaluation Results Part 1/2

Leg Tp	End Pt	Turn Tp	Alt Restr	Alt Restr 2	Spd Restr	Turn Ang	Leg Length	Min Seg Length
IF	REESR		+30000.0				0.0	0.0
TF	RCHEL	FLY_BY	+28000.0			0.52	10.78	1.0
TF	SHOLN	FLY_BY	+25000.0		280.0	0.71	8.8	1.0
TF	PCIFC	FLY_BY	+21000.0			10.54	14.93	3.78
TF	CRAYN	FLY_BY	+17000.0			0.31	9.53	3.78
TF	SIPPP	FLY_BY	+14000.0			0.0	10.64	1.0
TF	TANDY	FLY_BY	+13000.0	-14000.0		1.36	10.22	1.0
TF	OHSEA	FLY_BY				41.08	9.4	2.41
TF	STYFF	FLY_BY	-9000.0			30.85	8.28	4.27
TF	KAYNN	FLY_BY	-7000.0			62.86	6.71	4.14
TF	PADDR	FLY_BY	+3000.0	-6000.0		5.55	5.02	2.29
TF	QGATE	FLY_BY	+3000.0			37.93	7.65	1.56
TF	BREKE	FLY_BY	3000.0				3.34	1.56

REESR:PCIFC:KLGB:RW12 Evaluation Results Part 2/2

Leg Tp	End Pt	Turn Tp	DTA1	DTA1 Turn Rad	DTA1 Turn Alt	DTA1 Turn Spd	DTA1 Bank Ang	DTA1 Tailwind	DTA1 True Airspd	DTA1 vGround	DTA2	DTA2 Turn Rad	DTA2 Turn Alt	DTA2 Turn Spd	DTA2 Bank Ang	DTA2 Tailwind	DTA2 True Airspd	DTA2 vGround
IF	REESR				0.0	0.0							0.0	0.0				
TF	RCHEL	FLY_BY	0.0		30695.57	300.0	0.0	108.0	513.0	570.0	0.24	53.17	28000.0	300.0	5.0	102.0	488.0	565.0
TF	SHOLN	FLY_BY	0.24	53.17	28000.0	300.0	5.0	102.0	488.0	565.0	0.3	47.85	25000.0	280.0	5.0	96.0	431.0	536.0
TF	PCIFC	FLY_BY	0.3	47.85	25000.0	280.0	5.0	96.0	431.0	536.0	3.78	40.98	21000.0	280.0	5.0	89.0	402.0	496.0
TF	CRAYN	FLY_BY	3.78	40.98	21000.0	280.0	5.0	89.0	402.0	496.0	0.5	182.07	18312.0	280.0	1.0	83.0	384.0	467.0
TF	SIPPP	FLY_BY	0.5	182.07	18312.0	280.0	1.0	83.0	384.0	467.0	0.0		15652.91	280.0	0.0	78.0	367.0	445.0
TF	TANDY	FLY_BY	0.0		15652.91	280.0	0.0	78.0	367.0	445.0	1.8	150.79	13097.33	280.0	1.0	73.0	352.0	425.0
TF	OHSEA	FLY_BY	1.8	150.79	13097.33	280.0	1.0	73.0	352.0	425.0	2.41	6.44	10747.58	280.0	20.54	68.0	339.0	407.0
TF	STYFF	FLY_BY	2.41	6.44	10747.58	280.0	20.54	68.0	339.0	407.0	1.86	6.73	8676.71	250.0	15.42	64.0	293.0	357.0
TF	KAYNN	FLY_BY	1.86	6.73	8676.71	250.0	15.42	64.0	293.0	357.0	2.29	3.74	7000.0	250.0	25.0	61.0	285.0	346.0
TF	PADDR	FLY_BY	2.29	3.74	7000.0	250.0	25.0	61.0	285.0	346.0	1.66	34.36	5747.03	250.0	2.77	58.0	280.0	338.0
TF	QGATE	FLY_BY	1.66	34.36	5747.03	250.0	2.77	58.0	280.0	338.0	1.56	4.53	3835.01	250.0	18.97	55.0	272.0	327.0
TF	BREKE	FLY_BY	1.56	4.53	3835.01	250.0	18.97	55.0	272.0	327.0	0.0		3000.0	250.0	0.0	53.0	268.0	321.0

REESR:PCIFC:KLGB:RW12 Obstacle Evaluation

Start Pt	End Pt	Name	Source	AC (H/V (ft) AMSL)	Lat	Long	Height (ft) AMSL	Mnts Area	Pri/Sec Area	ROC (ft)	WCVH (ft)	MOCA (ft)	Min OCS Alt (ft)	Date
REESR	RCHEL	TerrainPt_47_REESR:PCIFC:KL GB:RW12_REESR:RCHEL		4E (+- 250/+125)	N34° 48' 48.00"	W119° 10' 03.00"	8815.62	true	P	2000.0		11016	11015.62	30-Jun-2015 08:44:37
RCHEL	SHOLN	TerrainPt_34_REBRG:PCIFC:KL GB:RW12_RCHEL:SHOLN		4E (+- 250/+125)	N34° 30' 36.00"	W119° 04' 33.00"	6702.76	true	P	2000.0		8903	8902.76	30-Jun-2015 08:44:35
SHOLN	PCIFC	TerrainPt_11_REBRG:PCIFC:KL GB:RW12_SHOLN:PCIFC		4E (+- 250/+125)	N34° 28' 09.00"	W119° 01' 27.00"	5045.93	true	P	2000.0		7246	7245.93	30-Jun-2015 08:44:35
PCIFC	CRAYN	TerrainPt_17_GOONA:PCIFC:KL GB:RW12_PCIFC:CRAYN		4E (+- 250/+125)	N34° 05' 06.00"	W118° 47' 09.00"	2824.8	true	P	2000.0		5025	5024.8	30-Jun-2015 08:44:33
CRAYN	SIPPP	TerrainPt_0_GOONA:PCIFC:KL GB:RW12_CRAYN:SIPPP		4E (+- 250/+125)	N34° 05' 06.00"	W118° 47' 09.00"	2824.8	true	P	2000.0		5025	5024.8	30-Jun-2015 08:44:33
SIPPP	TANDY	UDO 22662	UDO	4D (+- 250/+50)	N33° 49' 37.23"	W118° 40' 38.73"	219.0	true	P	2000.0		2219	2219.0	23-Mar-2015 08:44:58
TANDY	OHSEA	UDO 22663	UDO	4D (+- 250/+50)	N33° 38' 40.33"	W118° 35' 55.03"	219.0	true	P	2000.0		2219	2219.0	23-Mar-2015 08:45:20
OHSEA	STYFF	NONE					-1.0	false	S					N/A
STYFF	KAYNN	UDO 45326	UDO	4D (+- 250/+50)	N33° 31' 52.17"	W118° 24' 18.95"	219.0	true	P	2000.0		2219	2219.0	23-Mar-2015 09:01:43
KAYNN	PADDR	UDO 22664	UDO	4D (+- 250/+50)	N33° 32' 55.93"	W118° 17' 10.78"	219.0	true	P	2000.0		2219	2219.0	23-Mar-2015 08:45:43
PADDR	QGATE	06-022790	AVNII	7E (+- 3038/+125)	N33° 43' 31.80"	W118° 15' 33.07"	420.0	true	P	2000.0		2420	2420.0	30-Jun-2015 08:40:58
QGATE	BREKE	06-022791	AVNII	7E (+- 3038/+125)	N33° 43' 32.45"	W118° 15' 32.69"	420.0	true	P	2000.0		2420	2420.0	30-Jun-2015 08:40:58

REESR:PCIFC:KLGB:RW12 Criteria Failures

No failures.

Route Evaluation for REESR:PCIFC:KLGB:RW25R,RW30

REESR:PCIFC:KLGB:RW25R,RW30 Evaluation Results Part 1/2

Leg Tp	End Pt	Turn Tp	Alt Restr	Alt Restr 2	Spd Restr	Turn Ang	Leg Length	Min Seg Length
IF	REESR		+30000.0				0.0	0.0
TF	RCHEL	FLY_BY	+28000.0			0.52	10.78	1.0
TF	SHOLN	FLY_BY	+25000.0		280.0	0.71	8.8	1.0
TF	PCIFC	FLY_BY	+21000.0			10.54	14.93	3.78
TF	CRAYN	FLY_BY	+17000.0			0.31	9.53	3.78
TF	SIPPP	FLY_BY	+14000.0			0.0	10.64	1.0
TF	TANDY	FLY_BY	+13000.0	-14000.0		1.36	10.22	1.0
TF	OHSEA	FLY_BY				41.08	9.4	2.41
TF	STYFF	FLY_BY	-9000.0			30.85	8.28	4.27
TF	KAYNN	FLY_BY	-7000.0			22.75	6.71	3.6
TF	LAXBB	FLY_BY	-5000.0			0.13	8.27	1.74
TF	ALBAS	FLY_BY	4000.0			35.06	5.38	1.56
TF	EZKEL	FLY_OVER					2.0	1.56
FM							0.0	0.0

REESR:PCIFC:KLGB:RW25R,RW30 Evaluation Results Part 2/2

Leg Tp	End Pt	Turn Tp	DTA1	DTA1 Turn Rad	DTA1 Turn Alt	DTA1 Turn Spd	DTA1 Bank Ang	DTA1 Tailwind	DTA1 True Airspd	DTA1 vGround	DTA2	DTA2 Turn Rad	DTA2 Turn Alt	DTA2 Turn Spd	DTA2 Bank Ang	DTA2 Tailwind	DTA2 True Airspd	DTA2 vGround
IF	REESR				0.0	0.0							0.0	0.0				
TF	RCHEL	FLY_BY	0.0		30695.57	300.0	0.0	108.0	513.0	570.0	0.24	53.17	28000.0	300.0	5.0	102.0	488.0	565.0
TF	SHOLN	FLY_BY	0.24	53.17	28000.0	300.0	5.0	102.0	488.0	565.0	0.3	47.85	25000.0	280.0	5.0	96.0	431.0	536.0
TF	PCIFC	FLY_BY	0.3	47.85	25000.0	280.0	5.0	96.0	431.0	536.0	3.78	40.98	21000.0	280.0	5.0	89.0	402.0	496.0
TF	CRAYN	FLY_BY	3.78	40.98	21000.0	280.0	5.0	89.0	402.0	496.0	0.5	182.07	18312.0	280.0	1.0	83.0	384.0	467.0
TF	SIPPP	FLY_BY	0.5	182.07	18312.0	280.0	1.0	83.0	384.0	467.0	0.0		15652.91	280.0	0.0	78.0	367.0	445.0
TF	TANDY	FLY_BY	0.0		15652.91	280.0	0.0	78.0	367.0	445.0	1.8	150.79	13097.33	280.0	1.0	73.0	352.0	425.0
TF	OHSEA	FLY_BY	1.8	150.79	13097.33	280.0	1.0	73.0	352.0	425.0	2.41	6.44	10747.58	280.0	20.54	68.0	339.0	407.0
TF	STYFF	FLY_BY	2.41	6.44	10747.58	280.0	20.54	68.0	339.0	407.0	1.86	6.73	8676.71	250.0	15.42	64.0	293.0	357.0
TF	KAYNN	FLY_BY	1.86	6.73	8676.71	250.0	15.42	64.0	293.0	357.0	1.74	8.67	7000.0	250.0	11.38	61.0	285.0	346.0
TF	LAXBB	FLY_BY	1.74	8.67	7000.0	250.0	11.38	61.0	285.0	346.0	0.1	92.57	5000.0	250.0	1.0	57.0	276.0	333.0
TF	ALBAS	FLY_BY	0.1	92.57	5000.0	250.0	1.0	57.0	276.0	333.0	1.56	4.93	4000.0	250.0	17.53	55.0	272.0	327.0
TF	EZKEL	FLY_OVER	1.56	4.93	4000.0	250.0	17.53	55.0	272.0	327.0	0.0		2200.0	250.0	0.0	51.0	265.0	316.0
FM			0.0		2200.0	250.0	0.0	51.0	265.0	316.0			0.0	0.0				

REESR:PCIFC:KLGB:RW25R,RW30 Obstacle Evaluation

Start Pt	End Pt	Name	Source	AC (H/V (ft) AMSL)	Lat	Long	Height (ft) AMSL	Mnts Area	Pri/Sec Area	ROC (ft)	WCVH (ft)	MOCA (ft)	Min OCS Alt (ft)	Date
REESR	RCHEL	TerrainPt_47_REESR:PCIFC:KL GB:RW12_REESR:RCHEL		4E (+- 250/+125)	N34° 48' 48.00"	W119° 10' 03.00"	8815.62	true	P	2000.0		11016	11015.62	30-Jun-2015 08:44:37
RCHEL	SHOLN	TerrainPt_34_REBRG:PCIFC:KL GB:RW12_RCHEL:SHOLN		4E (+- 250/+125)	N34° 30' 36.00"	W119° 04' 33.00"	6702.76	true	P	2000.0		8903	8902.76	30-Jun-2015 08:44:35
SHOLN	PCIFC	TerrainPt_11_REBRG:PCIFC:KL GB:RW12_SHOLN:PCIFC		4E (+- 250/+125)	N34° 28' 09.00"	W119° 01' 27.00"	5045.93	true	P	2000.0		7246	7245.93	30-Jun-2015 08:44:35
PCIFC	CRAYN	TerrainPt_17_GOONA:PCIFC:KL GB:RW12_PCIFC:CRAYN		4E (+- 250/+125)	N34° 05' 06.00"	W118° 47' 09.00"	2824.8	true	P	2000.0		5025	5024.8	30-Jun-2015 08:44:33
CRAYN	SIPPP	TerrainPt_0_GOONA:PCIFC:KL GB:RW12_CRAYN:SIPPP		4E (+- 250/+125)	N34° 05' 06.00"	W118° 47' 09.00"	2824.8	true	P	2000.0		5025	5024.8	30-Jun-2015 08:44:33
SIPPP	TANDY	UDO 22662	UDO	4D (+- 250/+50)	N33° 49' 37.23"	W118° 40' 38.73"	219.0	true	P	2000.0		2219	2219.0	23-Mar-2015 08:44:58
TANDY	OHSEA	UDO 22663	UDO	4D (+- 250/+50)	N33° 38' 40.33"	W118° 35' 55.03"	219.0	true	P	2000.0		2219	2219.0	23-Mar-2015 08:45:20
OHSEA	STYFF	NONE					-1.0	false	S					N/A
STYFF	KAYNN	UDO 45326	UDO	4D (+- 250/+50)	N33° 31' 52.17"	W118° 24' 18.95"	219.0	true	P	2000.0		2219	2219.0	23-Mar-2015 09:01:43
KAYNN	LAXBB	UDO 22664	UDO	4D (+- 250/+50)	N33° 32' 55.93"	W118° 17' 10.78"	219.0	true	P	2000.0		2219	2219.0	23-Mar-2015 08:45:43
LAXBB	ALBAS	UDO 79696	UDO	4D (+- 250/+50)	N33° 34' 36.72"	W118° 07' 08.85"	219.0	true	P	2000.0		2219	2219.0	30-Jun-2015 08:38:53
ALBAS	EZKEL	TerrainPt_888_GOONA:PCIFC:K LGB:RW25R,RW30_ALBAS:EZK EL		4E (+- 250/+125)	N33° 38' 30.00"	W118° 02' 42.00"	0.0	true	P	2000.0		2200	2200.0	30-Jun-2015 08:44:34

REESR:PCIFC:KLGB:RW25R,RW30 Criteria Failures

No failures.

Evaluation Input

Name:	RS Results PCIFC
Project:	LGB PCIFC STAR paperwork_20150623
Last evaluated:	30-Jun-2015 08:40:35
Evaluated obstacles?:	true
Obstacle Database:	AVNII
Evaluated terrain?:	true
Worst Case Vegetation Height (ft) AGL:	0

Terrain Information

Terrain Extractor Name	Extractor Location	Extractor Type	Resolution
DTED 3 Sec	C:\Users\martha ctr dunn\Documents\SDAT\GreatLakes DTED-3Sec	org.mitre.caasd.terrain.DTEExtractor	3.0

Procedure Criteria Failures

No failures.

Evaluation Notes and Warnings

No failures.

Obstacles Requiring Accuracy Code Verification

None.

Database Effective Dates

Database	Date
Tiled AVNII	N/A
OEAAA	N/A
NFDC	06/25/2015
IFP_OFFLINE	N/A
AVNIS	06/30/2015
DOF	06/25/2015
AVNII_OFFLINE	N/A
AVNII	06/30/2015
CIFP	06/25/2015

Notes:

Point obstacles with an elevation of 219 FT added for segments of procedure located over Pacific Ocean per FPT.