

ORCKA

Point Of Contact

Organization Name - Southern California Metroplex

POC's Name - Robert E. Henry, SOCAL Metroplex Manager: Jose Gonzalez, SOCAL Metroplex NATCA CO-LEAD

Telephone Number - (661) 265-8434

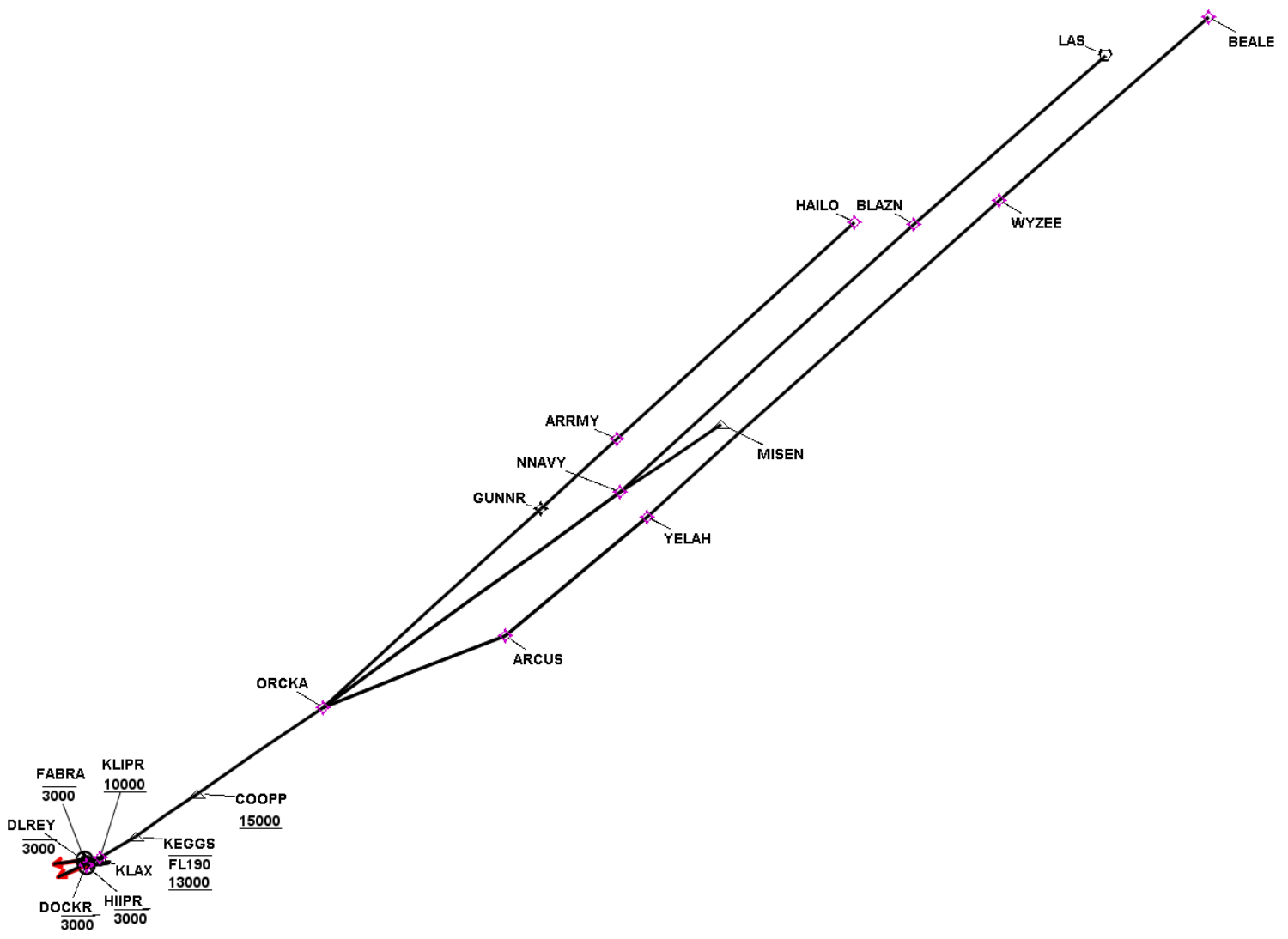
FAX Number - (661) 265-8338

Email Address - Robert.Henry@FAA.GOV; Jose.J.Gonzalez@FAA.GOV

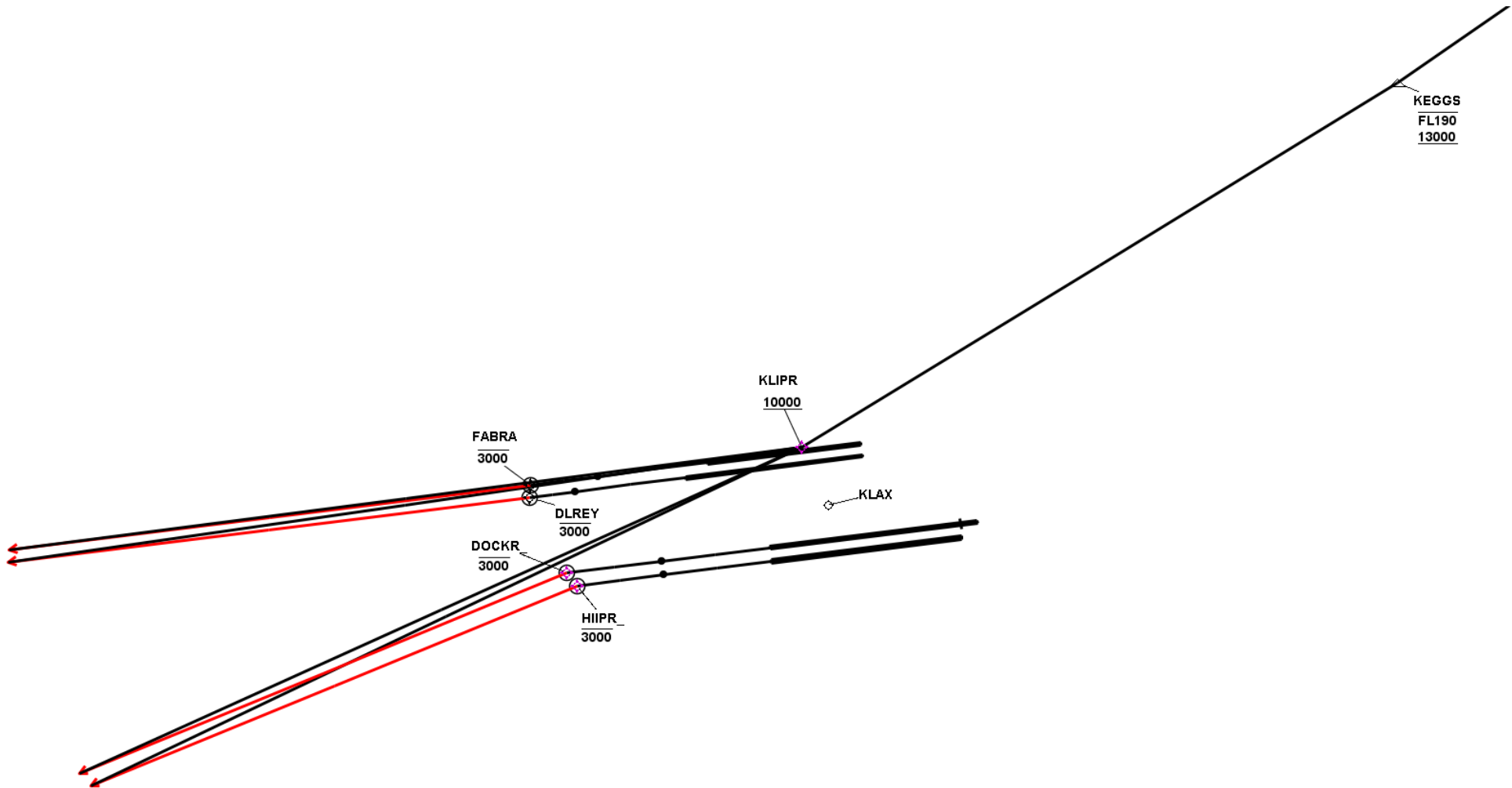
TARGETS Distribution Package

Version:5.0.5.1

Date: Thu Apr 28 09:50:30 PDT 2016



ORCKA



ORCKA

Runway Transition Data - LAX RW24R

DB	End Point	Latitude (D° M' S.ss")	Longitude (D° M' S.ss")	FO/FB	Leg	TC	MC	Distance	Altitude	Speed	MEA	MOCA	Arc Center Lat (D° M' S.ss")	Arc Center Lon (D° M' S.ss")	Arc Radius (NM)
AVNIS	DER RW24R	N33 56 56.80	W118 25 52.18												
					VA	263.00	251.00	1.05	+640						
AVNIS	FABRA WP	N33 56 44.30	W118 27 53.85	FO	DF			.65	-3000						
					VM	263.00	251.00								
	KLIPR WP	N33 57 05.38	W118 24 47.49	FB	DF			7.61	+10000						

Runway Transition Data - LAX RW25L

DB	End Point	Latitude (D° M' S.ss")	Longitude (D° M' S.ss")	FO/FB	Leg	TC	MC	Distance	Altitude	Speed	MEA	MOCA	Arc Center Lat (D° M' S.ss")	Arc Center Lon (D° M' S.ss")	Arc Radius (NM)
AVNIS	DER RW25L	N33 56 01.14	W118 25 08.47												
					VA	263.01	251.01	1.04	+640						
	HIIPR_ WP	N33 55 47.45	W118 27 21.59	FO	DF			.82	-3000						
					VM	248.00	236.00								
	KLIPR WP	N33 57 05.38	W118 24 47.49	FB	DF			7.48	+10000						

Runway Transition Data - LAX RW25R

DB	End Point	Latitude (D° M' S.ss")	Longitude (D° M' S.ss")	FO/FB	Leg	TC	MC	Distance	Altitude	Speed	MEA	MOCA	Arc Center Lat (D° M' S.ss")	Arc Center Lon (D° M' S.ss")	Arc Radius (NM)
AVNIS	DER RW25R	N33 56 08.99	W118 25 09.63												
					VA	263.01	251.01	1.04	+640						
	DOCKR_ WP	N33 55 54.64	W118 27 29.17	FO	DF			.91	-3000						
					VM	248.00	236.00								
	KLIPR WP	N33 57 05.38	W118 24 47.49	FB	DF			7.52	+10000						

Runway Transition Data - RW24L

DB	End Point	Latitude (D° M' S.ss")	Longitude (D° M' S.ss")	FO/FB	Leg	TC	MC	Distance	Altitude	Speed	MEA	MOCA	Arc Center Lat (D° M' S.ss")	Arc Center Lon (D° M' S.ss")	Arc Radius (NM)
AIRNA V2	DER RW24L	N33 56 48.53	W118 26 04.80												
					VA	263.00	251.00	1.06	+640						
AVNIS	DLREY WP	N33 56 37.25	W118 27 54.53	FO	DF			.47	-3000						
					VM	263.00	251.00								
	KLIPR WP	N33 57 05.38	W118 24 47.49	FB	DF			7.63	+10000						

Common Route Data - ORCKA CR

DB	End Point	Latitude (D° M' S.ss")	Longitude (D° M' S.ss")	FO/FB	Leg	TC	MC	Distance	Altitude	Speed	MEA	MOCA	Arc Center Lat (D° M' S.ss")	Arc Center Lon (D° M' S.ss")	Arc Radius (NM)
	KLIPR WP	N33 57 05.38	W118 24 47.49		IF				+10000						
AVNIS	KEGGS WP	N34 00 30.41	W118 17 58.53	FB	TF	58.93	46.93	6.62	+13000 -19000		10000				
AVNIS	COOPP WP	N34 07 16.06	W118 06 01.92	FB	TF	55.72	43.72	12.00	+15000		13000				
	ORCKA WP	N34 20 59.03	W117 41 35.32	FB	TF	55.84	43.84	24.46			15000				

En Route Transition Data - BEALE

DB	End Point	Latitude (D° M' S.ss")	Longitude (D° M' S.ss")	FO/FB	Leg	TC	MC	Distance	Altitude	Speed	MEA	MOCA	Arc Center Lat (D° M' S.ss")	Arc Center Lon (D° M' S.ss")	Arc Radius (NM)
	ORCKA WP	N34 20 59.03	W117 41 35.32		IF										
	ARCUS WP	N34 32 30.00	W117 06 06.42	FB	TF	68.44	56.44	31.52			15000				
	YELAH WP	N34 51 15.00	W116 38 40.90	FB	TF	50.25	38.25	29.36			15000				
	WYZEE WP	N35 41 45.92	W115 30 12.69	FB	TF	47.70	35.70	75.41			15000				
AVNIS	BEALE WP	N36 10 56.83	W114 49 34.09	FB	TF	48.36	36.36	44.03			15000				

En Route Transition Data - HAILO

DB	End Point	Latitude (D° M' S.ss")	Longitude (D° M' S.ss")	FO/FB	Leg	TC	MC	Distance	Altitude	Speed	MEA	MOCA	Arc Center Lat (D° M' S.ss")	Arc Center Lon (D° M' S.ss")	Arc Radius (NM)
	ORCKA WP	N34 20 59.03	W117 41 35.32		IF										
AVNIS	GUNNR WP	N34 52 37.00	W116 59 13.00	FB	TF	47.72	35.72	47.12			15000				
	ARRMY WP	N35 03 48.00	W116 44 24.00	FB	TF	47.41	35.41	16.52			15000				
AVNIS	HAILO WP	N35 38 14.00	W115 58 16.00	FB	TF	47.44	35.44	51.05			15000				

En Route Transition Data - LAS

DB	End Point	Latitude (D° M' S.ss")	Longitude (D° M' S.ss")	FO/FB	Leg	TC	MC	Distance	Altitude	Speed	MEA	MOCA	Arc Center Lat (D° M' S.ss")	Arc Center Lon (D° M' S.ss")	Arc Radius (NM)
	ORCKA WP	N34 20 59.03	W117 41 35.32		IF										
	NNAVY WP	N34 55 13.98	W116 43 45.07	FB	TF	54.11	42.11	58.71			15000				
	BLAZN WP	N35 37 55.21	W115 46 46.06	FB	TF	47.31	35.31	63.19			15000				
AVNIS	LAS VORTAC	N36 04 46.93	W115 09 35.27	FB	TF	48.23	36.23	40.41			15000				

En Route Transition Data - MISEN

DB	End Point	Latitude (D° M' S.ss")	Longitude (D° M' S.ss")	FO/FB	Leg	TC	MC	Distance	Altitude	Speed	MEA	MOCA	Arc Center Lat (D° M' S.ss")	Arc Center Lon (D° M' S.ss")	Arc Radius (NM)
	ORCKA WP	N34 20 59.03	W117 41 35.32		IF										
	NNAVY WP	N34 55 13.98	W116 43 45.07	FB	TF	54.11	42.11	58.71			15000				
AVNIS	MISEN WP	N35 06 08.46	W116 24 13.86	FB	TF	55.72	43.72	19.38			15000				

ORCKA

En Route Transition Data - YELAH

DB	End Point	Latitude (D° M' S.ss")	Longitude (D° M' S.ss")	FO/FB	Leg	TC	MC	Distance	Altitude	Speed	MEA	MOCA	Arc Center Lat (D° M' S.ss")	Arc Center Lon (D° M' S.ss")	Arc Radius (NM)
	ORCKA WP	N34 20 59.03	W117 41 35.32		IF										
	ARCUS WP	N34 32 30.00	W117 06 06.42	FB	TF	68.44	56.44	31.52			15000				
	YELAH WP	N34 51 15.00	W116 38 40.90	FB	TF	50.25	38.25	29.36			15000				

Waypoint Data

DB	Waypoint	Arc Center	Lat-Long (DMS.S)	Latitude (Deg)	Longitude (Deg)	Latitude (D°, M.mm')	Longitude (D°, M.mm')	Latitude (D° M' S.ss")	Longitude (D° M' S.ss")
	ARCUS WP		343230.00N-1170606.42W	N 34.5416667	W 117.1017833	N34 32.500	W117 06.107	N34 32 30.00	W117 06 06.42
	ARMY WP		350348.00N-1164424.00W	N 35.0633333	W 116.7400000	N35 03.800	W116 44.400	N35 03 48.00	W116 44 24.00
AVNIS	BEALE WP		361056.83N-1144934.09W	N 36.1824528	W 114.8261361	N36 10.947	W114 49.568	N36 10 56.83	W114 49 34.09
	BLAZN WP		353755.21N-1154646.06W	N 35.6320028	W 115.7794611	N35 37.920	W115 46.768	N35 37 55.21	W115 46 46.06
AVNIS	COOPP WP		340716.06N-1180601.92W	N 34.1211278	W 118.1005333	N34 07.268	W118 06.032	N34 07 16.06	W118 06 01.92
AVNIS	DLREY WP		335637.25N-1182754.53W	N 33.9436806	W 118.4651472	N33 56.621	W118 27.909	N33 56 37.25	W118 27 54.53
	DOCKR_ WP		335554.64N-1182729.17W	N 33.9318444	W 118.4581028	N33 55.911	W118 27.486	N33 55 54.64	W118 27 29.17
AVNIS	FABRA WP		335644.30N-1182753.85W	N 33.9456389	W 118.4649583	N33 56.738	W118 27.898	N33 56 44.30	W118 27 53.85
AVNIS	GUNNR WP		345237.00N-1165913.00W	N 34.8769444	W 116.9869444	N34 52.617	W116 59.217	N34 52 37.00	W116 59 13.00
AVNIS	HAILO WP		353814.00N-1155816.00W	N 35.6372222	W 115.9711111	N35 38.233	W115 58.267	N35 38 14.00	W115 58 16.00
	HIIPR_ WP		335547.45N-1182721.59W	N 33.9298472	W 118.4559972	N33 55.791	W118 27.360	N33 55 47.45	W118 27 21.59
AVNIS	KEGGS WP		340030.41N-1181758.53W	N 34.0084472	W 118.2995917	N34 00.507	W118 17.976	N34 00 30.41	W118 17 58.53
	KLIPR WP		335705.38N-1182447.49W	N 33.9514944	W 118.4131917	N33 57.090	W118 24.792	N33 57 05.38	W118 24 47.49
AVNIS	LAS VORTAC		360446.93N-1150935.27W	N 36.0797028	W 115.1597972	N36 04.782	W115 09.588	N36 04 46.93	W115 09 35.27
AVNIS	MISEN WP		350608.46N-1162413.86W	N 35.1023500	W 116.4038500	N35 06.141	W116 24.231	N35 06 08.46	W116 24 13.86
	NNAVY WP		345513.98N-1164345.07W	N 34.9205500	W 116.7291861	N34 55.233	W116 43.751	N34 55 13.98	W116 43 45.07
	ORCKA WP		342059.03N-1174135.32W	N 34.3497300	W 117.6931445	N34 20.984	W117 41.589	N34 20 59.03	W117 41 35.32
	WYZEE WP		354145.92N-1153012.69W	N 35.6960889	W 115.5035250	N35 41.765	W115 30.211	N35 41 45.92	W115 30 12.69
	YELAH WP		345115.00N-1163840.90W	N 34.8541667	W 116.6446944	N34 51.250	W116 38.682	N34 51 15.00	W116 38 40.90

RS Results ORCKA from KLAX

Last Evaluation: 28-Apr-2016 09:25:39
Reference Software Version: 0.3.6

Route Evaluation for LAX RW24R:ORCKA CR:BEALE

Required Engagement Climb Gradient (ft/NM): 500.0

ORCKA

LAX RW24R:ORCKA CR:BEALE Evaluation Results Part 1/2

Leg Tp	End Pt	Turn Tp	Alt Restr	Alt Restr 2	Spd Restr	Turn Ang	Leg Length	Min Seg Length
VA			+640.0			0.06	1.05	1.05
DF	FABRA	FLY_OVER	-3000.0				0.65	0.0
VM							0.0	0.0
DF	KLIPR	FLY_BY	+10000.0			90.0	0.0	0.0
TF	KEGGS	FLY_BY	+13000.0	-19000.0		3.27	6.62	5.67
TF	COOPP	FLY_BY	+15000.0			0.01	12.0	1.0
TF	ORCKA	FLY_BY				12.37	24.46	5.32
TF	ARCUS	FLY_BY				18.52	31.52	14.14
TF	YELAH	FLY_BY				2.82	29.36	8.82
TF	WYZEE	FLY_BY				0.01	75.41	1.0
TF	BEALE	FLY_BY					44.03	1.0

LAX RW24R:ORCKA CR:BEALE Evaluation Results Part 2/2

Leg Tp	End Pt	Turn Tp	DTA1	DTA1 Turn Rad	DTA1 Turn Alt	DTA1 Turn Spd	DTA1 Bank Ang	DTA1 Tailwind	DTA1 True Airspd	DTA1 vGround	DTA2	DTA2 Turn Rad	DTA2 Turn Alt	DTA2 Turn Spd	DTA2 Bank Ang	DTA2 Tailwind	DTA2 True Airspd	DTA2 vGround
VA					0.0	0.0					0.0	2.89	640.0	265.0	25.0	30.0	274.0	304.0
DF	FABRA	FLY_OVER	0.0	2.89	640.0	265.0	25.0	30.0	274.0	304.0	0.0		963.03	265.0	0.0	30.0	276.0	306.0
VM			0.0		963.03	265.0	0.0	30.0	276.0	306.0			0.0	0.0				
DF	KLIPR	FLY_BY			0.0	0.0					5.67	5.67	10000.0	300.0	25.0	67.0	359.0	426.0
TF	KEGGS	FLY_BY	5.67	5.67	10000.0	300.0	25.0	67.0	359.0	426.0	2.94	102.9	13000.0	300.0	1.64	73.0	376.0	449.0
TF	COOPP	FLY_BY	2.94	102.9	13000.0	300.0	1.64	73.0	376.0	449.0	0.0		17203.01	300.0	0.0	81.0	404.0	485.0
TF	ORCKA	FLY_BY	0.0		17203.01	300.0	0.0	81.0	404.0	485.0	5.32	49.11	25772.03	300.0	5.0	98.0	468.0	543.0
TF	ARCUS	FLY_BY	5.32	49.11	25772.03	300.0	5.0	98.0	468.0	543.0	8.82	54.11	36819.15	300.0	5.0	120.0	577.0	570.0
TF	YELAH	FLY_BY	8.82	54.11	36819.15	300.0	5.0	120.0	577.0	570.0	1.33	54.11	41000.0	300.0	5.0	128.0	629.0	570.0
TF	WYZEE	FLY_BY	1.33	54.11	41000.0	300.0	5.0	128.0	629.0	570.0	0.0		41000.0	300.0	0.0	128.0	629.0	570.0
TF	BEALE	FLY_BY	0.0		41000.0	300.0	0.0	128.0	629.0	570.0	0.0		41000.0	300.0	0.0	128.0	629.0	570.0

LAX RW24R:ORCKA CR:BEALE Criteria Failures

No failures.

Route Evaluation for LAX RW24R:ORCKA CR:HAILO

Required Engagement Climb Gradient (ft/NM): 500.0

LAX RW24R:ORCKA CR:HAILO Evaluation Results Part 1/2

Leg Tp	End Pt	Turn Tp	Alt Restr	Alt Restr 2	Spd Restr	Turn Ang	Leg Length	Min Seg Length
VA			+640.0			0.06	1.05	1.05
DF	FABRA	FLY_OVER	-3000.0				0.65	0.0
VM							0.0	0.0
DF	KLIPR	FLY_BY	+10000.0			90.0	0.0	0.0
TF	KEGGS	FLY_BY	+13000.0	-19000.0		3.27	6.62	5.67
TF	COOPP	FLY_BY	+15000.0			0.01	12.0	1.0
TF	ORCKA	FLY_BY				8.35	24.46	1.0
TF	GUNNR	FLY_BY				0.71	47.12	1.0
TF	ARMY	FLY_BY				0.11	16.52	1.0
TF	HAILO	FLY_BY					51.05	1.0

LAX RW24R:ORCKA CR:HAILO Evaluation Results Part 2/2

Leg Tp	End Pt	Turn Tp	DTA1	DTA1 Turn Rad	DTA1 Turn Alt	DTA1 Turn Spd	DTA1 Bank Ang	DTA1 Tailwind	DTA1 True Airspd	DTA1 vGround	DTA2	DTA2 Turn Rad	DTA2 Turn Alt	DTA2 Turn Spd	DTA2 Bank Ang	DTA2 Tailwind	DTA2 True Airspd	DTA2 vGround
VA					0.0	0.0					0.0	2.89	640.0	265.0	25.0	30.0	274.0	304.0
DF	FABRA	FLY_OVER	0.0	2.89	640.0	265.0	25.0	30.0	274.0	304.0	0.0		963.03	265.0	0.0	30.0	276.0	306.0
VM			0.0		963.03	265.0	0.0	30.0	276.0	306.0			0.0	0.0				
DF	KLIPR	FLY_BY			0.0	0.0					5.67	5.67	10000.0	300.0	25.0	67.0	359.0	426.0
TF	KEGGS	FLY_BY	5.67	5.67	10000.0	300.0	25.0	67.0	359.0	426.0	2.94	102.9	13000.0	300.0	1.64	73.0	376.0	449.0
TF	COOPP	FLY_BY	2.94	102.9	13000.0	300.0	1.64	73.0	376.0	449.0	0.0		17203.01	300.0	0.0	81.0	404.0	485.0
TF	ORCKA	FLY_BY	0.0		17203.01	300.0	0.0	81.0	404.0	485.0	3.59	49.11	25772.03	300.0	5.0	98.0	468.0	543.0
TF	GUNNR	FLY_BY	3.59	49.11	25772.03	300.0	5.0	98.0	468.0	543.0	0.33	54.11	41000.0	300.0	5.0	128.0	629.0	570.0
TF	ARMY	FLY_BY	0.33	54.11	41000.0	300.0	5.0	128.0	629.0	570.0	0.05	54.11	41000.0	300.0	5.0	128.0	629.0	570.0
TF	HAILO	FLY_BY	0.05	54.11	41000.0	300.0	5.0	128.0	629.0	570.0	0.0		41000.0	300.0	0.0	128.0	629.0	570.0

LAX RW24R:ORCKA CR:HAILO Criteria Failures

No failures.

Route Evaluation for LAX RW24R:ORCKA CR:LAS

Required Engagement Climb Gradient (ft/NM): 500.0

LAX RW24R:ORCKA CR:LAS Evaluation Results Part 1/2

Leg Tp	End Pt	Turn Tp	Alt Restr	Alt Restr 2	Spd Restr	Turn Ang	Leg Length	Min Seg Length
VA			+640.0			0.06	1.05	1.05
DF	FABRA	FLY_OVER	-3000.0				0.65	0.0
VM							0.0	0.0
DF	KLIPR	FLY_BY	+10000.0			90.0	0.0	0.0
TF	KEGGS	FLY_BY	+13000.0	-19000.0		3.27	6.62	5.67
TF	COOPP	FLY_BY	+15000.0			0.01	12.0	1.0
TF	ORCKA	FLY_BY				1.96	24.46	1.0
TF	NNAVY	FLY_BY				7.34	58.71	1.0
TF	BLAZN	FLY_BY				0.37	63.19	1.0
TF	LAS	FLY_BY					40.41	1.0

LAX RW24R:ORCKA CR:LAS Evaluation Results Part 2/2

Leg Tp	End Pt	Turn Tp	DTA1	DTA1 Turn Rad	DTA1 Turn Alt	DTA1 Turn Spd	DTA1 Bank Ang	DTA1 Tailwind	DTA1 True Airspd	DTA1 vGround	DTA2	DTA2 Turn Rad	DTA2 Turn Alt	DTA2 Turn Spd	DTA2 Bank Ang	DTA2 Tailwind	DTA2 True Airspd	DTA2 vGround
VA					0.0	0.0					0.0	2.89	640.0	265.0	25.0	30.0	274.0	304.0
DF	FABRA	FLY_OVER	0.0	2.89	640.0	265.0	25.0	30.0	274.0	304.0	0.0		963.03	265.0	0.0	30.0	276.0	306.0
VM			0.0		963.03	265.0	0.0	30.0	276.0	306.0			0.0	0.0				
DF	KLIPR	FLY_BY			0.0	0.0					5.67	5.67	10000.0	300.0	25.0	67.0	359.0	426.0
TF	KEGGS	FLY_BY	5.67	5.67	10000.0	300.0	25.0	67.0	359.0	426.0	2.94	102.9	13000.0	300.0	1.64	73.0	376.0	449.0
TF	COOPP	FLY_BY	2.94	102.9	13000.0	300.0	1.64	73.0	376.0	449.0	0.0		17203.01	300.0	0.0	81.0	404.0	485.0
TF	ORCKA	FLY_BY	0.0		17203.01	300.0	0.0	81.0	404.0	485.0	0.84	49.11	25772.03	300.0	5.0	98.0	468.0	543.0
TF	NNAVY	FLY_BY	0.84	49.11	25772.03	300.0	5.0	98.0	468.0	543.0	3.47	54.11	41000.0	300.0	5.0	128.0	629.0	570.0
TF	BLAZN	FLY_BY	3.47	54.11	41000.0	300.0	5.0	128.0	629.0	570.0	0.17	54.11	41000.0	300.0	5.0	128.0	629.0	570.0
TF	LAS	FLY_BY	0.17	54.11	41000.0	300.0	5.0	128.0	629.0	570.0	0.0		41000.0	300.0	0.0	128.0	629.0	570.0

LAX RW24R:ORCKA CR:LAS Criteria Failures

No failures.

ORCKA

Route Evaluation for LAX RW24R:ORCKA CR:MISEN

Required Engagement Climb Gradient (ft/NM): 500.0

LAX RW24R:ORCKA CR:MISEN Evaluation Results Part 1/2

Leg Tp	End Pt	Turn Tp	Alt Restr	Alt Restr 2	Spd Restr	Turn Ang	Leg Length	Min Seg Length
VA			+640.0			0.06	1.05	1.05
DF	FABRA	FLY_OVER	-3000.0				0.65	0.0
VM							0.0	0.0
DF	KLIPR	FLY_BY	+10000.0			90.0	0.0	0.0
TF	KEGGS	FLY_BY	+13000.0	-19000.0		3.27	6.62	5.67
TF	COOPP	FLY_BY	+15000.0			0.01	12.0	1.0
TF	ORCKA	FLY_BY				1.96	24.46	1.0
TF	NNAVY	FLY_BY				1.07	58.71	1.0
TF	MISEN	FLY_BY					19.38	1.0

LAX RW24R:ORCKA CR:MISEN Evaluation Results Part 2/2

Leg Tp	End Pt	Turn Tp	DTA1	DTA1 Turn Rad	DTA1 Turn Alt	DTA1 Turn Spd	DTA1 Bank Ang	DTA1 Tailwind	DTA1 True Airspd	DTA1 vGround	DTA2	DTA2 Turn Rad	DTA2 Turn Alt	DTA2 Turn Spd	DTA2 Bank Ang	DTA2 Tailwind	DTA2 True Airspd	DTA2 vGround
VA					0.0	0.0					0.0	2.89	640.0	265.0	25.0	30.0	274.0	304.0
DF	FABRA	FLY_OVER	0.0	2.89	640.0	265.0	25.0	30.0	274.0	304.0	0.0		963.03	265.0	0.0	30.0	276.0	306.0
VM			0.0		963.03	265.0	0.0	30.0	276.0	306.0			0.0	0.0				
DF	KLIPR	FLY_BY			0.0	0.0					5.67	5.67	10000.0	300.0	25.0	67.0	359.0	426.0
TF	KEGGS	FLY_BY	5.67	5.67	10000.0	300.0	25.0	67.0	359.0	426.0	2.94	102.9	13000.0	300.0	1.64	73.0	376.0	449.0
TF	COOPP	FLY_BY	2.94	102.9	13000.0	300.0	1.64	73.0	376.0	449.0	0.0		17203.01	300.0	0.0	81.0	404.0	485.0
TF	ORCKA	FLY_BY	0.0		17203.01	300.0	0.0	81.0	404.0	485.0	0.84	49.11	25772.03	300.0	5.0	98.0	468.0	543.0
TF	NNAVY	FLY_BY	0.84	49.11	25772.03	300.0	5.0	98.0	468.0	543.0	0.5	54.11	41000.0	300.0	5.0	128.0	629.0	570.0
TF	MISEN	FLY_BY	0.5	54.11	41000.0	300.0	5.0	128.0	629.0	570.0	0.0		41000.0	300.0	0.0	128.0	629.0	570.0

LAX RW24R:ORCKA CR:MISEN Criteria Failures

No failures.

Route Evaluation for LAX RW24R:ORCKA CR:YELAH

Required Engagement Climb Gradient (ft/NM): 500.0

LAX RW24R:ORCKA CR:YELAH Evaluation Results Part 1/2

Leg Tp	End Pt	Turn Tp	Alt Restr	Alt Restr 2	Spd Restr	Turn Ang	Leg Length	Min Seg Length
VA			+640.0			0.06	1.05	1.05
DF	FABRA	FLY_OVER	-3000.0				0.65	0.0
VM							0.0	0.0
DF	KLIPR	FLY_BY	+10000.0			90.0	0.0	0.0
TF	KEGGS	FLY_BY	+13000.0	-19000.0		3.27	6.62	5.67
TF	COOPP	FLY_BY	+15000.0			0.01	12.0	1.0
TF	ORCKA	FLY_BY				12.37	24.46	5.32
TF	ARCUS	FLY_BY				18.52	31.52	14.14
TF	YELAH	FLY_BY					29.36	8.82

LAX RW24R:ORCKA CR:YELAH Evaluation Results Part 2/2

Leg Tp	End Pt	Turn Tp	DTA1	DTA1 Turn Rad	DTA1 Turn Alt	DTA1 Turn Spd	DTA1 Bank Ang	DTA1 Tailwind	DTA1 True Airspd	DTA1 vGround	DTA2	DTA2 Turn Rad	DTA2 Turn Alt	DTA2 Turn Spd	DTA2 Bank Ang	DTA2 Tailwind	DTA2 True Airspd	DTA2 vGround
VA					0.0	0.0					0.0	2.89	640.0	265.0	25.0	30.0	274.0	304.0
DF	FABRA	FLY_OVER	0.0	2.89	640.0	265.0	25.0	30.0	274.0	304.0	0.0		963.03	265.0	0.0	30.0	276.0	306.0
VM			0.0		963.03	265.0	0.0	30.0	276.0	306.0			0.0	0.0				
DF	KLIPR	FLY_BY			0.0	0.0					5.67	5.67	10000.0	300.0	25.0	67.0	359.0	426.0
TF	KEGGS	FLY_BY	5.67	5.67	10000.0	300.0	25.0	67.0	359.0	426.0	2.94	102.9	13000.0	300.0	1.64	73.0	376.0	449.0
TF	COOPP	FLY_BY	2.94	102.9	13000.0	300.0	1.64	73.0	376.0	449.0	0.0		17203.01	300.0	0.0	81.0	404.0	485.0
TF	ORCKA	FLY_BY	0.0		17203.01	300.0	0.0	81.0	404.0	485.0	5.32	49.11	25772.03	300.0	5.0	98.0	468.0	543.0
TF	ARCUS	FLY_BY	5.32	49.11	25772.03	300.0	5.0	98.0	468.0	543.0	8.82	54.11	36819.15	300.0	5.0	120.0	577.0	570.0
TF	YELAH	FLY_BY	8.82	54.11	36819.15	300.0	5.0	120.0	577.0	570.0	0.0		41000.0	300.0	0.0	128.0	629.0	570.0

LAX RW24R:ORCKA CR:YELAH Criteria Failures

No failures.

Route Evaluation for LAX RW25L:ORCKA CR:BEALE

Required Engagement Climb Gradient (ft/NM): 500.0

LAX RW25L:ORCKA CR:BEALE Evaluation Results Part 1/2

Leg Tp	End Pt	Turn Tp	Alt Restr	Alt Restr 2	Spd Restr	Turn Ang	Leg Length	Min Seg Length
VA			+640.0			0.08	1.04	1.04
DF	HIIPR_	FLY_OVER	-3000.0				0.82	0.0
VM							0.0	0.0
DF	KLIPR	FLY_BY	+10000.0			90.0	0.0	0.0
TF	KEGGS	FLY_BY	+13000.0	-19000.0		3.27	6.62	5.67
TF	COOPP	FLY_BY	+15000.0			0.01	12.0	1.0
TF	ORCKA	FLY_BY				12.37	24.46	5.32
TF	ARCUS	FLY_BY				18.52	31.52	14.14
TF	YELAH	FLY_BY				2.82	29.36	8.82
TF	WYZEE	FLY_BY				0.01	75.41	1.0
TF	BEALE	FLY_BY					44.03	1.0

LAX RW25L:ORCKA CR:BEALE Evaluation Results Part 2/2

Leg Tp	End Pt	Turn Tp	DTA1	DTA1 Turn Rad	DTA1 Turn Alt	DTA1 Turn Spd	DTA1 Bank Ang	DTA1 Tailwind	DTA1 True Airspd	DTA1 vGround	DTA2	DTA2 Turn Rad	DTA2 Turn Alt	DTA2 Turn Spd	DTA2 Bank Ang	DTA2 Tailwind	DTA2 True Airspd	DTA2 vGround
VA					0.0	0.0					0.0	2.89	640.0	265.0	25.0	30.0	274.0	304.0
DF	HIIPR_	FLY_OVER	0.0	2.89	640.0	265.0	25.0	30.0	274.0	304.0	0.0		1051.78	265.0	0.0	30.0	276.0	306.0
VM			0.0		1051.78	265.0	0.0	30.0	276.0	306.0			0.0	0.0				
DF	KLIPR	FLY_BY			0.0	0.0					5.67	5.67	10000.0	300.0	25.0	67.0	359.0	426.0
TF	KEGGS	FLY_BY	5.67	5.67	10000.0	300.0	25.0	67.0	359.0	426.0	2.94	102.9	13000.0	300.0	1.64	73.0	376.0	449.0
TF	COOPP	FLY_BY	2.94	102.9	13000.0	300.0	1.64	73.0	376.0	449.0	0.0		17203.01	300.0	0.0	81.0	404.0	485.0
TF	ORCKA	FLY_BY	0.0		17203.01	300.0	0.0	81.0	404.0	485.0	5.32	49.11	25772.03	300.0	5.0	98.0	468.0	543.0
TF	ARCUS	FLY_BY	5.32	49.11	25772.03	300.0	5.0	98.0	468.0	543.0	8.82	54.11	36819.15	300.0	5.0	120.0	577.0	570.0
TF	YELAH	FLY_BY	8.82	54.11	36819.15	300.0	5.0	120.0	577.0	570.0	1.33	54.11	41000.0	300.0	5.0	128.0	629.0	570.0
TF	WYZEE	FLY_BY	1.33	54.11	41000.0	300.0	5.0	128.0	629.0	570.0	0.0		41000.0	300.0	0.0	128.0	629.0	570.0
TF	BEALE	FLY_BY	0.0		41000.0	300.0	0.0	128.0	629.0	570.0	0.0		41000.0	300.0	0.0	128.0	629.0	570.0

LAX RW25L:ORCKA CR:BEALE Criteria Failures

No failures.

Route Evaluation for LAX RW25L:ORCKA CR:HAILO

Required Engagement Climb Gradient (ft/NM): 500.0

LAX RW25L:ORCKA CR:HAILO Evaluation Results Part 1/2

Leg Tp	End Pt	Turn Tp	Alt Restr	Alt Restr 2	Spd Restr	Turn Ang	Leg Length	Min Seg Length
VA			+640.0			0.08	1.04	1.04
DF	HIIPR_	FLY_OVER	-3000.0				0.82	0.0
VM							0.0	0.0
DF	KLIPR	FLY_BY	+10000.0			90.0	0.0	0.0
TF	KEGGS	FLY_BY	+13000.0	-19000.0		3.27	6.62	5.67
TF	COOPP	FLY_BY	+15000.0			0.01	12.0	1.0
TF	ORCKA	FLY_BY				8.35	24.46	1.0
TF	GUNNR	FLY_BY				0.71	47.12	1.0
TF	ARMY	FLY_BY				0.11	16.52	1.0
TF	HAILO	FLY_BY					51.05	1.0

LAX RW25L:ORCKA CR:HAILO Evaluation Results Part 2/2

Leg Tp	End Pt	Turn Tp	DTA1	DTA1 Turn Rad	DTA1 Turn Alt	DTA1 Turn Spd	DTA1 Bank Ang	DTA1 Tailwind	DTA1 True Airspd	DTA1 vGround	DTA2	DTA2 Turn Rad	DTA2 Turn Alt	DTA2 Turn Spd	DTA2 Bank Ang	DTA2 Tailwind	DTA2 True Airspd	DTA2 vGround
VA					0.0	0.0					0.0	2.89	640.0	265.0	25.0	30.0	274.0	304.0
DF	HIIPR_	FLY_OVER	0.0	2.89	640.0	265.0	25.0	30.0	274.0	304.0	0.0		1051.78	265.0	0.0	30.0	276.0	306.0
VM			0.0		1051.78	265.0	0.0	30.0	276.0	306.0			0.0	0.0				
DF	KLIPR	FLY_BY			0.0	0.0					5.67	5.67	10000.0	300.0	25.0	67.0	359.0	426.0
TF	KEGGS	FLY_BY	5.67	5.67	10000.0	300.0	25.0	67.0	359.0	426.0	2.94	102.9	13000.0	300.0	1.64	73.0	376.0	449.0
TF	COOPP	FLY_BY	2.94	102.9	13000.0	300.0	1.64	73.0	376.0	449.0	0.0		17203.01	300.0	0.0	81.0	404.0	485.0
TF	ORCKA	FLY_BY	0.0		17203.01	300.0	0.0	81.0	404.0	485.0	3.59	49.11	25772.03	300.0	5.0	98.0	468.0	543.0
TF	GUNNR	FLY_BY	3.59	49.11	25772.03	300.0	5.0	98.0	468.0	543.0	0.33	54.11	41000.0	300.0	5.0	128.0	629.0	570.0
TF	ARMY	FLY_BY	0.33	54.11	41000.0	300.0	5.0	128.0	629.0	570.0	0.05	54.11	41000.0	300.0	5.0	128.0	629.0	570.0
TF	HAILO	FLY_BY	0.05	54.11	41000.0	300.0	5.0	128.0	629.0	570.0	0.0		41000.0	300.0	0.0	128.0	629.0	570.0

LAX RW25L:ORCKA CR:HAILO Criteria Failures

No failures.

ORCKA

Route Evaluation for LAX RW25L:ORCKA CR:LAS

Required Engagement Climb Gradient (ft/NM): 500.0

LAX RW25L:ORCKA CR:LAS Evaluation Results Part 1/2

Leg Tp	End Pt	Turn Tp	Alt Restr	Alt Restr 2	Spd Restr	Turn Ang	Leg Length	Min Seg Length
VA			+640.0			0.08	1.04	1.04
DF	HIIPR_	FLY_OVER	-3000.0				0.82	0.0
VM							0.0	0.0
DF	KLIPR	FLY_BY	+10000.0			90.0	0.0	0.0
TF	KEGGS	FLY_BY	+13000.0	-19000.0		3.27	6.62	5.67
TF	COOPP	FLY_BY	+15000.0			0.01	12.0	1.0
TF	ORCKA	FLY_BY				1.96	24.46	1.0
TF	NNAVY	FLY_BY				7.34	58.71	1.0
TF	BLAZN	FLY_BY				0.37	63.19	1.0
TF	LAS	FLY_BY					40.41	1.0

LAX RW25L:ORCKA CR:LAS Evaluation Results Part 2/2

Leg Tp	End Pt	Turn Tp	DTA1	DTA1 Turn Rad	DTA1 Turn Alt	DTA1 Turn Spd	DTA1 Bank Ang	DTA1 Tailwind	DTA1 True Airspd	DTA1 vGround	DTA2	DTA2 Turn Rad	DTA2 Turn Alt	DTA2 Turn Spd	DTA2 Bank Ang	DTA2 Tailwind	DTA2 True Airspd	DTA2 vGround
VA					0.0	0.0					0.0	2.89	640.0	265.0	25.0	30.0	274.0	304.0
DF	HIIPR_	FLY_OVER	0.0	2.89	640.0	265.0	25.0	30.0	274.0	304.0	0.0		1051.78	265.0	0.0	30.0	276.0	306.0
VM			0.0		1051.78	265.0	0.0	30.0	276.0	306.0			0.0	0.0				
DF	KLIPR	FLY_BY			0.0	0.0					5.67	5.67	10000.0	300.0	25.0	67.0	359.0	426.0
TF	KEGGS	FLY_BY	5.67	5.67	10000.0	300.0	25.0	67.0	359.0	426.0	2.94	102.9	13000.0	300.0	1.64	73.0	376.0	449.0
TF	COOPP	FLY_BY	2.94	102.9	13000.0	300.0	1.64	73.0	376.0	449.0	0.0		17203.01	300.0	0.0	81.0	404.0	485.0
TF	ORCKA	FLY_BY	0.0		17203.01	300.0	0.0	81.0	404.0	485.0	0.84	49.11	25772.03	300.0	5.0	98.0	468.0	543.0
TF	NNAVY	FLY_BY	0.84	49.11	25772.03	300.0	5.0	98.0	468.0	543.0	3.47	54.11	41000.0	300.0	5.0	128.0	629.0	570.0
TF	BLAZN	FLY_BY	3.47	54.11	41000.0	300.0	5.0	128.0	629.0	570.0	0.17	54.11	41000.0	300.0	5.0	128.0	629.0	570.0
TF	LAS	FLY_BY	0.17	54.11	41000.0	300.0	5.0	128.0	629.0	570.0	0.0		41000.0	300.0	0.0	128.0	629.0	570.0

LAX RW25L:ORCKA CR:LAS Criteria Failures

No failures.

ORCKA

Route Evaluation for LAX RW25L:ORCKA CR:MISEN

Required Engagement Climb Gradient (ft/NM): 500.0

LAX RW25L:ORCKA CR:MISEN Evaluation Results Part 1/2

Leg Tp	End Pt	Turn Tp	Alt Restr	Alt Restr 2	Spd Restr	Turn Ang	Leg Length	Min Seg Length
VA			+640.0			0.08	1.04	1.04
DF	HIIPR_	FLY_OVER	-3000.0				0.82	0.0
VM							0.0	0.0
DF	KLIPR	FLY_BY	+10000.0			90.0	0.0	0.0
TF	KEGGS	FLY_BY	+13000.0	-19000.0		3.27	6.62	5.67
TF	COOPP	FLY_BY	+15000.0			0.01	12.0	1.0
TF	ORCKA	FLY_BY				1.96	24.46	1.0
TF	NNAVY	FLY_BY				1.07	58.71	1.0
TF	MISEN	FLY_BY					19.38	1.0

LAX RW25L:ORCKA CR:MISEN Evaluation Results Part 2/2

Leg Tp	End Pt	Turn Tp	DTA1	DTA1 Turn Rad	DTA1 Turn Alt	DTA1 Turn Spd	DTA1 Bank Ang	DTA1 Tailwind	DTA1 True Airspd	DTA1 vGround	DTA2	DTA2 Turn Rad	DTA2 Turn Alt	DTA2 Turn Spd	DTA2 Bank Ang	DTA2 Tailwind	DTA2 True Airspd	DTA2 vGround
VA					0.0	0.0					0.0	2.89	640.0	265.0	25.0	30.0	274.0	304.0
DF	HIIPR_	FLY_OVER	0.0	2.89	640.0	265.0	25.0	30.0	274.0	304.0	0.0		1051.78	265.0	0.0	30.0	276.0	306.0
VM			0.0		1051.78	265.0	0.0	30.0	276.0	306.0			0.0	0.0				
DF	KLIPR	FLY_BY			0.0	0.0					5.67	5.67	10000.0	300.0	25.0	67.0	359.0	426.0
TF	KEGGS	FLY_BY	5.67	5.67	10000.0	300.0	25.0	67.0	359.0	426.0	2.94	102.9	13000.0	300.0	1.64	73.0	376.0	449.0
TF	COOPP	FLY_BY	2.94	102.9	13000.0	300.0	1.64	73.0	376.0	449.0	0.0		17203.01	300.0	0.0	81.0	404.0	485.0
TF	ORCKA	FLY_BY	0.0		17203.01	300.0	0.0	81.0	404.0	485.0	0.84	49.11	25772.03	300.0	5.0	98.0	468.0	543.0
TF	NNAVY	FLY_BY	0.84	49.11	25772.03	300.0	5.0	98.0	468.0	543.0	0.5	54.11	41000.0	300.0	5.0	128.0	629.0	570.0
TF	MISEN	FLY_BY	0.5	54.11	41000.0	300.0	5.0	128.0	629.0	570.0	0.0		41000.0	300.0	0.0	128.0	629.0	570.0

LAX RW25L:ORCKA CR:MISEN Criteria Failures

No failures.

Route Evaluation for LAX RW25L:ORCKA CR:YELAH

Required Engagement Climb Gradient (ft/NM): 500.0

LAX RW25L:ORCKA CR:YELAH Evaluation Results Part 1/2

Leg Tp	End Pt	Turn Tp	Alt Restr	Alt Restr 2	Spd Restr	Turn Ang	Leg Length	Min Seg Length
VA			+640.0			0.08	1.04	1.04
DF	HIIPR_	FLY_OVER	-3000.0				0.82	0.0
VM							0.0	0.0
DF	KLIPR	FLY_BY	+10000.0			90.0	0.0	0.0
TF	KEGGS	FLY_BY	+13000.0	-19000.0		3.27	6.62	5.67
TF	COOPP	FLY_BY	+15000.0			0.01	12.0	1.0
TF	ORCKA	FLY_BY				12.37	24.46	5.32
TF	ARCUS	FLY_BY				18.52	31.52	14.14
TF	YELAH	FLY_BY					29.36	8.82

LAX RW25L:ORCKA CR:YELAH Evaluation Results Part 2/2

Leg Tp	End Pt	Turn Tp	DTA1	DTA1 Turn Rad	DTA1 Turn Alt	DTA1 Turn Spd	DTA1 Bank Ang	DTA1 Tailwind	DTA1 True Airspd	DTA1 vGround	DTA2	DTA2 Turn Rad	DTA2 Turn Alt	DTA2 Turn Spd	DTA2 Bank Ang	DTA2 Tailwind	DTA2 True Airspd	DTA2 vGround
VA					0.0	0.0					0.0	2.89	640.0	265.0	25.0	30.0	274.0	304.0
DF	HIIPR_	FLY_OVER	0.0	2.89	640.0	265.0	25.0	30.0	274.0	304.0	0.0		1051.78	265.0	0.0	30.0	276.0	306.0
VM			0.0		1051.78	265.0	0.0	30.0	276.0	306.0			0.0	0.0				
DF	KLIPR	FLY_BY			0.0	0.0					5.67	5.67	10000.0	300.0	25.0	67.0	359.0	426.0
TF	KEGGS	FLY_BY	5.67	5.67	10000.0	300.0	25.0	67.0	359.0	426.0	2.94	102.9	13000.0	300.0	1.64	73.0	376.0	449.0
TF	COOPP	FLY_BY	2.94	102.9	13000.0	300.0	1.64	73.0	376.0	449.0	0.0		17203.01	300.0	0.0	81.0	404.0	485.0
TF	ORCKA	FLY_BY	0.0		17203.01	300.0	0.0	81.0	404.0	485.0	5.32	49.11	25772.03	300.0	5.0	98.0	468.0	543.0
TF	ARCUS	FLY_BY	5.32	49.11	25772.03	300.0	5.0	98.0	468.0	543.0	8.82	54.11	36819.15	300.0	5.0	120.0	577.0	570.0
TF	YELAH	FLY_BY	8.82	54.11	36819.15	300.0	5.0	120.0	577.0	570.0	0.0		41000.0	300.0	0.0	128.0	629.0	570.0

LAX RW25L:ORCKA CR:YELAH Criteria Failures

No failures.

Route Evaluation for LAX RW25R:ORCKA CR:BEALE

Required Engagement Climb Gradient (ft/NM): 500.0

LAX RW25R:ORCKA CR:BEALE Evaluation Results Part 1/2

Leg Tp	End Pt	Turn Tp	Alt Restr	Alt Restr 2	Spd Restr	Turn Ang	Leg Length	Min Seg Length
VA			+640.0			0.08	1.04	1.04
DF	DOCKR_	FLY_OVER	-3000.0				0.91	0.0
VM							0.0	0.0
DF	KLIPR	FLY_BY	+10000.0			90.0	0.0	0.0
TF	KEGGS	FLY_BY	+13000.0	-19000.0		3.27	6.62	5.67
TF	COOPP	FLY_BY	+15000.0			0.01	12.0	1.0
TF	ORCKA	FLY_BY				12.37	24.46	5.32
TF	ARCUS	FLY_BY				18.52	31.52	14.14
TF	YELAH	FLY_BY				2.82	29.36	8.82
TF	WYZEE	FLY_BY				0.01	75.41	1.0
TF	BEALE	FLY_BY					44.03	1.0

LAX RW25R:ORCKA CR:BEALE Evaluation Results Part 2/2

Leg Tp	End Pt	Turn Tp	DTA1	DTA1 Turn Rad	DTA1 Turn Alt	DTA1 Turn Spd	DTA1 Bank Ang	DTA1 Tailwind	DTA1 True Airspd	DTA1 vGround	DTA2	DTA2 Turn Rad	DTA2 Turn Alt	DTA2 Turn Spd	DTA2 Bank Ang	DTA2 Tailwind	DTA2 True Airspd	DTA2 vGround
VA					0.0	0.0					0.0	2.89	640.0	265.0	25.0	30.0	274.0	304.0
DF	DOCKR_	FLY_OVER	0.0	2.89	640.0	265.0	25.0	30.0	274.0	304.0	0.0		1095.29	265.0	0.0	30.0	276.0	306.0
VM			0.0		1095.29	265.0	0.0	30.0	276.0	306.0			0.0	0.0				
DF	KLIPR	FLY_BY			0.0	0.0					5.67	5.67	10000.0	300.0	25.0	67.0	359.0	426.0
TF	KEGGS	FLY_BY	5.67	5.67	10000.0	300.0	25.0	67.0	359.0	426.0	2.94	102.9	13000.0	300.0	1.64	73.0	376.0	449.0
TF	COOPP	FLY_BY	2.94	102.9	13000.0	300.0	1.64	73.0	376.0	449.0	0.0		17203.01	300.0	0.0	81.0	404.0	485.0
TF	ORCKA	FLY_BY	0.0		17203.01	300.0	0.0	81.0	404.0	485.0	5.32	49.11	25772.03	300.0	5.0	98.0	468.0	543.0
TF	ARCUS	FLY_BY	5.32	49.11	25772.03	300.0	5.0	98.0	468.0	543.0	8.82	54.11	36819.15	300.0	5.0	120.0	577.0	570.0
TF	YELAH	FLY_BY	8.82	54.11	36819.15	300.0	5.0	120.0	577.0	570.0	1.33	54.11	41000.0	300.0	5.0	128.0	629.0	570.0
TF	WYZEE	FLY_BY	1.33	54.11	41000.0	300.0	5.0	128.0	629.0	570.0	0.0		41000.0	300.0	0.0	128.0	629.0	570.0
TF	BEALE	FLY_BY	0.0		41000.0	300.0	0.0	128.0	629.0	570.0	0.0		41000.0	300.0	0.0	128.0	629.0	570.0

LAX RW25R:ORCKA CR:BEALE Criteria Failures

No failures.

ORCKA

Route Evaluation for LAX RW25R:ORCKA CR:HAILO

Required Engagement Climb Gradient (ft/NM): 500.0

LAX RW25R:ORCKA CR:HAILO Evaluation Results Part 1/2

Leg Tp	End Pt	Turn Tp	Alt Restr	Alt Restr 2	Spd Restr	Turn Ang	Leg Length	Min Seg Length
VA			+640.0			0.08	1.04	1.04
DF	DOCKR_	FLY_OVER	-3000.0				0.91	0.0
VM							0.0	0.0
DF	KLIPR	FLY_BY	+10000.0			90.0	0.0	0.0
TF	KEGGS	FLY_BY	+13000.0	-19000.0		3.27	6.62	5.67
TF	COOPP	FLY_BY	+15000.0			0.01	12.0	1.0
TF	ORCKA	FLY_BY				8.35	24.46	1.0
TF	GUNNR	FLY_BY				0.71	47.12	1.0
TF	ARMY	FLY_BY				0.11	16.52	1.0
TF	HAILO	FLY_BY					51.05	1.0

LAX RW25R:ORCKA CR:HAILO Evaluation Results Part 2/2

Leg Tp	End Pt	Turn Tp	DTA1	DTA1 Turn Rad	DTA1 Turn Alt	DTA1 Turn Spd	DTA1 Bank Ang	DTA1 Tailwind	DTA1 True Airspd	DTA1 vGround	DTA2	DTA2 Turn Rad	DTA2 Turn Alt	DTA2 Turn Spd	DTA2 Bank Ang	DTA2 Tailwind	DTA2 True Airspd	DTA2 vGround
VA					0.0	0.0					0.0	2.89	640.0	265.0	25.0	30.0	274.0	304.0
DF	DOCKR_	FLY_OVER	0.0	2.89	640.0	265.0	25.0	30.0	274.0	304.0	0.0		1095.29	265.0	0.0	30.0	276.0	306.0
VM			0.0		1095.29	265.0	0.0	30.0	276.0	306.0			0.0	0.0				
DF	KLIPR	FLY_BY			0.0	0.0					5.67	5.67	10000.0	300.0	25.0	67.0	359.0	426.0
TF	KEGGS	FLY_BY	5.67	5.67	10000.0	300.0	25.0	67.0	359.0	426.0	2.94	102.9	13000.0	300.0	1.64	73.0	376.0	449.0
TF	COOPP	FLY_BY	2.94	102.9	13000.0	300.0	1.64	73.0	376.0	449.0	0.0		17203.01	300.0	0.0	81.0	404.0	485.0
TF	ORCKA	FLY_BY	0.0		17203.01	300.0	0.0	81.0	404.0	485.0	3.59	49.11	25772.03	300.0	5.0	98.0	468.0	543.0
TF	GUNNR	FLY_BY	3.59	49.11	25772.03	300.0	5.0	98.0	468.0	543.0	0.33	54.11	41000.0	300.0	5.0	128.0	629.0	570.0
TF	ARMY	FLY_BY	0.33	54.11	41000.0	300.0	5.0	128.0	629.0	570.0	0.05	54.11	41000.0	300.0	5.0	128.0	629.0	570.0
TF	HAILO	FLY_BY	0.05	54.11	41000.0	300.0	5.0	128.0	629.0	570.0	0.0		41000.0	300.0	0.0	128.0	629.0	570.0

LAX RW25R:ORCKA CR:HAILO Criteria Failures

No failures.

Route Evaluation for LAX RW25R:ORCKA CR:LAS

Required Engagement Climb Gradient (ft/NM): 500.0

LAX RW25R:ORCKA CR:LAS Evaluation Results Part 1/2

Leg Tp	End Pt	Turn Tp	Alt Restr	Alt Restr 2	Spd Restr	Turn Ang	Leg Length	Min Seg Length
VA			+640.0			0.08	1.04	1.04
DF	DOCKR_	FLY_OVER	-3000.0				0.91	0.0
VM							0.0	0.0
DF	KLIPR	FLY_BY	+10000.0			90.0	0.0	0.0
TF	KEGGS	FLY_BY	+13000.0	-19000.0		3.27	6.62	5.67
TF	COOPP	FLY_BY	+15000.0			0.01	12.0	1.0
TF	ORCKA	FLY_BY				1.96	24.46	1.0
TF	NNAVY	FLY_BY				7.34	58.71	1.0
TF	BLAZN	FLY_BY				0.37	63.19	1.0
TF	LAS	FLY_BY					40.41	1.0

LAX RW25R:ORCKA CR:LAS Evaluation Results Part 2/2

Leg Tp	End Pt	Turn Tp	DTA1	DTA1 Turn Rad	DTA1 Turn Alt	DTA1 Turn Spd	DTA1 Bank Ang	DTA1 Tailwind	DTA1 True Airspd	DTA1 vGround	DTA2	DTA2 Turn Rad	DTA2 Turn Alt	DTA2 Turn Spd	DTA2 Bank Ang	DTA2 Tailwind	DTA2 True Airspd	DTA2 vGround
VA					0.0	0.0					0.0	2.89	640.0	265.0	25.0	30.0	274.0	304.0
DF	DOCKR_	FLY_OVER	0.0	2.89	640.0	265.0	25.0	30.0	274.0	304.0	0.0		1095.29	265.0	0.0	30.0	276.0	306.0
VM			0.0		1095.29	265.0	0.0	30.0	276.0	306.0			0.0	0.0				
DF	KLIPR	FLY_BY			0.0	0.0					5.67	5.67	10000.0	300.0	25.0	67.0	359.0	426.0
TF	KEGGS	FLY_BY	5.67	5.67	10000.0	300.0	25.0	67.0	359.0	426.0	2.94	102.9	13000.0	300.0	1.64	73.0	376.0	449.0
TF	COOPP	FLY_BY	2.94	102.9	13000.0	300.0	1.64	73.0	376.0	449.0	0.0		17203.01	300.0	0.0	81.0	404.0	485.0
TF	ORCKA	FLY_BY	0.0		17203.01	300.0	0.0	81.0	404.0	485.0	0.84	49.11	25772.03	300.0	5.0	98.0	468.0	543.0
TF	NNAVY	FLY_BY	0.84	49.11	25772.03	300.0	5.0	98.0	468.0	543.0	3.47	54.11	41000.0	300.0	5.0	128.0	629.0	570.0
TF	BLAZN	FLY_BY	3.47	54.11	41000.0	300.0	5.0	128.0	629.0	570.0	0.17	54.11	41000.0	300.0	5.0	128.0	629.0	570.0
TF	LAS	FLY_BY	0.17	54.11	41000.0	300.0	5.0	128.0	629.0	570.0	0.0		41000.0	300.0	0.0	128.0	629.0	570.0

LAX RW25R:ORCKA CR:LAS Criteria Failures

No failures.

ORCKA

Route Evaluation for LAX RW25R:ORCKA CR:MISEN

Required Engagement Climb Gradient (ft/NM): 500.0

LAX RW25R:ORCKA CR:MISEN Evaluation Results Part 1/2

Leg Tp	End Pt	Turn Tp	Alt Restr	Alt Restr 2	Spd Restr	Turn Ang	Leg Length	Min Seg Length
VA			+640.0			0.08	1.04	1.04
DF	DOCKR_	FLY_OVER	-3000.0				0.91	0.0
VM							0.0	0.0
DF	KLIPR	FLY_BY	+10000.0			90.0	0.0	0.0
TF	KEGGS	FLY_BY	+13000.0	-19000.0		3.27	6.62	5.67
TF	COOPP	FLY_BY	+15000.0			0.01	12.0	1.0
TF	ORCKA	FLY_BY				1.96	24.46	1.0
TF	NNAVY	FLY_BY				1.07	58.71	1.0
TF	MISEN	FLY_BY					19.38	1.0

LAX RW25R:ORCKA CR:MISEN Evaluation Results Part 2/2

Leg Tp	End Pt	Turn Tp	DTA1	DTA1 Turn Rad	DTA1 Turn Alt	DTA1 Turn Spd	DTA1 Bank Ang	DTA1 Tailwind	DTA1 True Airspd	DTA1 vGround	DTA2	DTA2 Turn Rad	DTA2 Turn Alt	DTA2 Turn Spd	DTA2 Bank Ang	DTA2 Tailwind	DTA2 True Airspd	DTA2 vGround
VA					0.0	0.0					0.0	2.89	640.0	265.0	25.0	30.0	274.0	304.0
DF	DOCKR_	FLY_OVER	0.0	2.89	640.0	265.0	25.0	30.0	274.0	304.0	0.0		1095.29	265.0	0.0	30.0	276.0	306.0
VM			0.0		1095.29	265.0	0.0	30.0	276.0	306.0			0.0	0.0				
DF	KLIPR	FLY_BY			0.0	0.0					5.67	5.67	10000.0	300.0	25.0	67.0	359.0	426.0
TF	KEGGS	FLY_BY	5.67	5.67	10000.0	300.0	25.0	67.0	359.0	426.0	2.94	102.9	13000.0	300.0	1.64	73.0	376.0	449.0
TF	COOPP	FLY_BY	2.94	102.9	13000.0	300.0	1.64	73.0	376.0	449.0	0.0		17203.01	300.0	0.0	81.0	404.0	485.0
TF	ORCKA	FLY_BY	0.0		17203.01	300.0	0.0	81.0	404.0	485.0	0.84	49.11	25772.03	300.0	5.0	98.0	468.0	543.0
TF	NNAVY	FLY_BY	0.84	49.11	25772.03	300.0	5.0	98.0	468.0	543.0	0.5	54.11	41000.0	300.0	5.0	128.0	629.0	570.0
TF	MISEN	FLY_BY	0.5	54.11	41000.0	300.0	5.0	128.0	629.0	570.0	0.0		41000.0	300.0	0.0	128.0	629.0	570.0

LAX RW25R:ORCKA CR:MISEN Criteria Failures

No failures.

Route Evaluation for LAX RW25R:ORCKA CR:YELAH

Required Engagement Climb Gradient (ft/NM): 500.0

LAX RW25R:ORCKA CR:YELAH Evaluation Results Part 1/2

Leg Tp	End Pt	Turn Tp	Alt Restr	Alt Restr 2	Spd Restr	Turn Ang	Leg Length	Min Seg Length
VA			+640.0			0.08	1.04	1.04
DF	DOCKR_	FLY_OVER	-3000.0				0.91	0.0
VM							0.0	0.0
DF	KLIPR	FLY_BY	+10000.0			90.0	0.0	0.0
TF	KEGGS	FLY_BY	+13000.0	-19000.0		3.27	6.62	5.67
TF	COOPP	FLY_BY	+15000.0			0.01	12.0	1.0
TF	ORCKA	FLY_BY				12.37	24.46	5.32
TF	ARCUS	FLY_BY				18.52	31.52	14.14
TF	YELAH	FLY_BY					29.36	8.82

LAX RW25R:ORCKA CR:YELAH Evaluation Results Part 2/2

Leg Tp	End Pt	Turn Tp	DTA1	DTA1 Turn Rad	DTA1 Turn Alt	DTA1 Turn Spd	DTA1 Bank Ang	DTA1 Tailwind	DTA1 True Airspd	DTA1 vGround	DTA2	DTA2 Turn Rad	DTA2 Turn Alt	DTA2 Turn Spd	DTA2 Bank Ang	DTA2 Tailwind	DTA2 True Airspd	DTA2 vGround
VA					0.0	0.0					0.0	2.89	640.0	265.0	25.0	30.0	274.0	304.0
DF	DOCKR_	FLY_OVER	0.0	2.89	640.0	265.0	25.0	30.0	274.0	304.0	0.0		1095.29	265.0	0.0	30.0	276.0	306.0
VM			0.0		1095.29	265.0	0.0	30.0	276.0	306.0			0.0	0.0				
DF	KLIPR	FLY_BY			0.0	0.0					5.67	5.67	10000.0	300.0	25.0	67.0	359.0	426.0
TF	KEGGS	FLY_BY	5.67	5.67	10000.0	300.0	25.0	67.0	359.0	426.0	2.94	102.9	13000.0	300.0	1.64	73.0	376.0	449.0
TF	COOPP	FLY_BY	2.94	102.9	13000.0	300.0	1.64	73.0	376.0	449.0	0.0		17203.01	300.0	0.0	81.0	404.0	485.0
TF	ORCKA	FLY_BY	0.0		17203.01	300.0	0.0	81.0	404.0	485.0	5.32	49.11	25772.03	300.0	5.0	98.0	468.0	543.0
TF	ARCUS	FLY_BY	5.32	49.11	25772.03	300.0	5.0	98.0	468.0	543.0	8.82	54.11	36819.15	300.0	5.0	120.0	577.0	570.0
TF	YELAH	FLY_BY	8.82	54.11	36819.15	300.0	5.0	120.0	577.0	570.0	0.0		41000.0	300.0	0.0	128.0	629.0	570.0

LAX RW25R:ORCKA CR:YELAH Criteria Failures

No failures.

Route Evaluation for RW24L:ORCKA CR:BEALE

Required Engagement Climb Gradient (ft/NM): 500.0

RW24L:ORCKA CR:BEALE Evaluation Results Part 1/2

Leg Tp	End Pt	Turn Tp	Alt Restr	Alt Restr 2	Spd Restr	Turn Ang	Leg Length	Min Seg Length
VA			+640.0			0.08	1.06	1.06
DF	DLREY	FLY_OVER	-3000.0				0.47	0.0
VM							0.0	0.0
DF	KLIPR	FLY_BY	+10000.0			90.0	0.0	0.0
TF	KEGGS	FLY_BY	+13000.0	-19000.0		3.27	6.62	5.67
TF	COOPP	FLY_BY	+15000.0			0.01	12.0	1.0
TF	ORCKA	FLY_BY				12.37	24.46	5.32
TF	ARCUS	FLY_BY				18.52	31.52	14.14
TF	YELAH	FLY_BY				2.82	29.36	8.82
TF	WYZEE	FLY_BY				0.01	75.41	1.0
TF	BEALE	FLY_BY					44.03	1.0

RW24L:ORCKA CR:BEALE Evaluation Results Part 2/2

Leg Tp	End Pt	Turn Tp	DTA1	DTA1 Turn Rad	DTA1 Turn Alt	DTA1 Turn Spd	DTA1 Bank Ang	DTA1 Tailwind	DTA1 True Airspd	DTA1 vGround	DTA2	DTA2 Turn Rad	DTA2 Turn Alt	DTA2 Turn Spd	DTA2 Bank Ang	DTA2 Tailwind	DTA2 True Airspd	DTA2 vGround
VA					0.0	0.0					0.0	2.89	640.0	265.0	25.0	30.0	274.0	304.0
DF	DLREY	FLY_OVER	0.0	2.89	640.0	265.0	25.0	30.0	274.0	304.0	0.0		876.48	265.0	0.0	30.0	275.0	305.0
VM			0.0		876.48	265.0	0.0	30.0	275.0	305.0			0.0	0.0				
DF	KLIPR	FLY_BY			0.0	0.0					5.67	5.67	10000.0	300.0	25.0	67.0	359.0	426.0
TF	KEGGS	FLY_BY	5.67	5.67	10000.0	300.0	25.0	67.0	359.0	426.0	2.94	102.9	13000.0	300.0	1.64	73.0	376.0	449.0
TF	COOPP	FLY_BY	2.94	102.9	13000.0	300.0	1.64	73.0	376.0	449.0	0.0		17203.01	300.0	0.0	81.0	404.0	485.0
TF	ORCKA	FLY_BY	0.0		17203.01	300.0	0.0	81.0	404.0	485.0	5.32	49.11	25772.03	300.0	5.0	98.0	468.0	543.0
TF	ARCUS	FLY_BY	5.32	49.11	25772.03	300.0	5.0	98.0	468.0	543.0	8.82	54.11	36819.15	300.0	5.0	120.0	577.0	570.0
TF	YELAH	FLY_BY	8.82	54.11	36819.15	300.0	5.0	120.0	577.0	570.0	1.33	54.11	41000.0	300.0	5.0	128.0	629.0	570.0
TF	WYZEE	FLY_BY	1.33	54.11	41000.0	300.0	5.0	128.0	629.0	570.0	0.0		41000.0	300.0	0.0	128.0	629.0	570.0
TF	BEALE	FLY_BY	0.0		41000.0	300.0	0.0	128.0	629.0	570.0	0.0		41000.0	300.0	0.0	128.0	629.0	570.0

RW24L:ORCKA CR:BEALE Criteria Failures

No failures.

Route Evaluation for RW24L:ORCKA CR:HAILO

Required Engagement Climb Gradient (ft/NM): 500.0

RW24L:ORCKA CR:HAILO Evaluation Results Part 1/2

Leg Tp	End Pt	Turn Tp	Alt Restr	Alt Restr 2	Spd Restr	Turn Ang	Leg Length	Min Seg Length
VA			+640.0			0.08	1.06	1.06
DF	DLREY	FLY_OVER	-3000.0				0.47	0.0
VM							0.0	0.0
DF	KLIPR	FLY_BY	+10000.0			90.0	0.0	0.0
TF	KEGGS	FLY_BY	+13000.0	-19000.0		3.27	6.62	5.67
TF	COOPP	FLY_BY	+15000.0			0.01	12.0	1.0
TF	ORCKA	FLY_BY				8.35	24.46	1.0
TF	GUNNR	FLY_BY				0.71	47.12	1.0
TF	ARMY	FLY_BY				0.11	16.52	1.0
TF	HAILO	FLY_BY					51.05	1.0

RW24L:ORCKA CR:HAILO Evaluation Results Part 2/2

Leg Tp	End Pt	Turn Tp	DTA1	DTA1 Turn Rad	DTA1 Turn Alt	DTA1 Turn Spd	DTA1 Bank Ang	DTA1 Tailwind	DTA1 True Airspd	DTA1 vGround	DTA2	DTA2 Turn Rad	DTA2 Turn Alt	DTA2 Turn Spd	DTA2 Bank Ang	DTA2 Tailwind	DTA2 True Airspd	DTA2 vGround
VA					0.0	0.0					0.0	2.89	640.0	265.0	25.0	30.0	274.0	304.0
DF	DLREY	FLY_OVER	0.0	2.89	640.0	265.0	25.0	30.0	274.0	304.0	0.0		876.48	265.0	0.0	30.0	275.0	305.0
VM			0.0		876.48	265.0	0.0	30.0	275.0	305.0			0.0	0.0				
DF	KLIPR	FLY_BY			0.0	0.0					5.67	5.67	10000.0	300.0	25.0	67.0	359.0	426.0
TF	KEGGS	FLY_BY	5.67	5.67	10000.0	300.0	25.0	67.0	359.0	426.0	2.94	102.9	13000.0	300.0	1.64	73.0	376.0	449.0
TF	COOPP	FLY_BY	2.94	102.9	13000.0	300.0	1.64	73.0	376.0	449.0	0.0		17203.01	300.0	0.0	81.0	404.0	485.0
TF	ORCKA	FLY_BY	0.0		17203.01	300.0	0.0	81.0	404.0	485.0	3.59	49.11	25772.03	300.0	5.0	98.0	468.0	543.0
TF	GUNNR	FLY_BY	3.59	49.11	25772.03	300.0	5.0	98.0	468.0	543.0	0.33	54.11	41000.0	300.0	5.0	128.0	629.0	570.0
TF	ARMY	FLY_BY	0.33	54.11	41000.0	300.0	5.0	128.0	629.0	570.0	0.05	54.11	41000.0	300.0	5.0	128.0	629.0	570.0
TF	HAILO	FLY_BY	0.05	54.11	41000.0	300.0	5.0	128.0	629.0	570.0	0.0		41000.0	300.0	0.0	128.0	629.0	570.0

RW24L:ORCKA CR:HAILO Criteria Failures

No failures.

Route Evaluation for RW24L:ORCKA CR:LAS

Required Engagement Climb Gradient (ft/NM): 500.0

RW24L:ORCKA CR:LAS Evaluation Results Part 1/2

Leg Tp	End Pt	Turn Tp	Alt Restr	Alt Restr 2	Spd Restr	Turn Ang	Leg Length	Min Seg Length
VA			+640.0			0.08	1.06	1.06
DF	DLREY	FLY_OVER	-3000.0				0.47	0.0
VM							0.0	0.0
DF	KLIPR	FLY_BY	+10000.0			90.0	0.0	0.0
TF	KEGGS	FLY_BY	+13000.0	-19000.0		3.27	6.62	5.67
TF	COOPP	FLY_BY	+15000.0			0.01	12.0	1.0
TF	ORCKA	FLY_BY				1.96	24.46	1.0
TF	NNAVY	FLY_BY				7.34	58.71	1.0
TF	BLAZN	FLY_BY				0.37	63.19	1.0
TF	LAS	FLY_BY					40.41	1.0

RW24L:ORCKA CR:LAS Evaluation Results Part 2/2

Leg Tp	End Pt	Turn Tp	DTA1	DTA1 Turn Rad	DTA1 Turn Alt	DTA1 Turn Spd	DTA1 Bank Ang	DTA1 Tailwind	DTA1 True Airspd	DTA1 vGround	DTA2	DTA2 Turn Rad	DTA2 Turn Alt	DTA2 Turn Spd	DTA2 Bank Ang	DTA2 Tailwind	DTA2 True Airspd	DTA2 vGround
VA					0.0	0.0					0.0	2.89	640.0	265.0	25.0	30.0	274.0	304.0
DF	DLREY	FLY_OVER	0.0	2.89	640.0	265.0	25.0	30.0	274.0	304.0	0.0		876.48	265.0	0.0	30.0	275.0	305.0
VM			0.0		876.48	265.0	0.0	30.0	275.0	305.0			0.0	0.0				
DF	KLIPR	FLY_BY			0.0	0.0					5.67	5.67	10000.0	300.0	25.0	67.0	359.0	426.0
TF	KEGGS	FLY_BY	5.67	5.67	10000.0	300.0	25.0	67.0	359.0	426.0	2.94	102.9	13000.0	300.0	1.64	73.0	376.0	449.0
TF	COOPP	FLY_BY	2.94	102.9	13000.0	300.0	1.64	73.0	376.0	449.0	0.0		17203.01	300.0	0.0	81.0	404.0	485.0
TF	ORCKA	FLY_BY	0.0		17203.01	300.0	0.0	81.0	404.0	485.0	0.84	49.11	25772.03	300.0	5.0	98.0	468.0	543.0
TF	NNAVY	FLY_BY	0.84	49.11	25772.03	300.0	5.0	98.0	468.0	543.0	3.47	54.11	41000.0	300.0	5.0	128.0	629.0	570.0
TF	BLAZN	FLY_BY	3.47	54.11	41000.0	300.0	5.0	128.0	629.0	570.0	0.17	54.11	41000.0	300.0	5.0	128.0	629.0	570.0
TF	LAS	FLY_BY	0.17	54.11	41000.0	300.0	5.0	128.0	629.0	570.0	0.0		41000.0	300.0	0.0	128.0	629.0	570.0

RW24L:ORCKA CR:LAS Criteria Failures

No failures.

Route Evaluation for RW24L:ORCKA CR:MISEN

Required Engagement Climb Gradient (ft/NM): 500.0

RW24L:ORCKA CR:MISEN Evaluation Results Part 1/2

Leg Tp	End Pt	Turn Tp	Alt Restr	Alt Restr 2	Spd Restr	Turn Ang	Leg Length	Min Seg Length
VA			+640.0			0.08	1.06	1.06
DF	DLREY	FLY_OVER	-3000.0				0.47	0.0
VM							0.0	0.0
DF	KLIPR	FLY_BY	+10000.0			90.0	0.0	0.0
TF	KEGGS	FLY_BY	+13000.0	-19000.0		3.27	6.62	5.67
TF	COOPP	FLY_BY	+15000.0			0.01	12.0	1.0
TF	ORCKA	FLY_BY				1.96	24.46	1.0
TF	NNAVY	FLY_BY				1.07	58.71	1.0
TF	MISEN	FLY_BY					19.38	1.0

RW24L:ORCKA CR:MISEN Evaluation Results Part 2/2

Leg Tp	End Pt	Turn Tp	DTA1	DTA1 Turn Rad	DTA1 Turn Alt	DTA1 Turn Spd	DTA1 Bank Ang	DTA1 Tailwind	DTA1 True Airspd	DTA1 vGround	DTA2	DTA2 Turn Rad	DTA2 Turn Alt	DTA2 Turn Spd	DTA2 Bank Ang	DTA2 Tailwind	DTA2 True Airspd	DTA2 vGround
VA					0.0	0.0					0.0	2.89	640.0	265.0	25.0	30.0	274.0	304.0
DF	DLREY	FLY_OVER	0.0	2.89	640.0	265.0	25.0	30.0	274.0	304.0	0.0		876.48	265.0	0.0	30.0	275.0	305.0
VM			0.0		876.48	265.0	0.0	30.0	275.0	305.0			0.0	0.0				
DF	KLIPR	FLY_BY			0.0	0.0					5.67	5.67	10000.0	300.0	25.0	67.0	359.0	426.0
TF	KEGGS	FLY_BY	5.67	5.67	10000.0	300.0	25.0	67.0	359.0	426.0	2.94	102.9	13000.0	300.0	1.64	73.0	376.0	449.0
TF	COOPP	FLY_BY	2.94	102.9	13000.0	300.0	1.64	73.0	376.0	449.0	0.0		17203.01	300.0	0.0	81.0	404.0	485.0
TF	ORCKA	FLY_BY	0.0		17203.01	300.0	0.0	81.0	404.0	485.0	0.84	49.11	25772.03	300.0	5.0	98.0	468.0	543.0
TF	NNAVY	FLY_BY	0.84	49.11	25772.03	300.0	5.0	98.0	468.0	543.0	0.5	54.11	41000.0	300.0	5.0	128.0	629.0	570.0
TF	MISEN	FLY_BY	0.5	54.11	41000.0	300.0	5.0	128.0	629.0	570.0	0.0		41000.0	300.0	0.0	128.0	629.0	570.0

RW24L:ORCKA CR:MISEN Criteria Failures

No failures.

Route Evaluation for RW24L:ORCKA CR:YELAH

Required Engagement Climb Gradient (ft/NM): 500.0

RW24L:ORCKA CR:YELAH Evaluation Results Part 1/2

Leg Tp	End Pt	Turn Tp	Alt Restr	Alt Restr 2	Spd Restr	Turn Ang	Leg Length	Min Seg Length
VA			+640.0			0.08	1.06	1.06
DF	DLREY	FLY_OVER	-3000.0				0.47	0.0
VM							0.0	0.0
DF	KLIPR	FLY_BY	+10000.0			90.0	0.0	0.0
TF	KEGGS	FLY_BY	+13000.0	-19000.0		3.27	6.62	5.67
TF	COOPP	FLY_BY	+15000.0			0.01	12.0	1.0
TF	ORCKA	FLY_BY				12.37	24.46	5.32
TF	ARCUS	FLY_BY				18.52	31.52	14.14
TF	YELAH	FLY_BY					29.36	8.82

RW24L:ORCKA CR:YELAH Evaluation Results Part 2/2

Leg Tp	End Pt	Turn Tp	DTA1	DTA1 Turn Rad	DTA1 Turn Alt	DTA1 Turn Spd	DTA1 Bank Ang	DTA1 Tailwind	DTA1 True Airspd	DTA1 vGround	DTA2	DTA2 Turn Rad	DTA2 Turn Alt	DTA2 Turn Spd	DTA2 Bank Ang	DTA2 Tailwind	DTA2 True Airspd	DTA2 vGround
VA					0.0	0.0					0.0	2.89	640.0	265.0	25.0	30.0	274.0	304.0
DF	DLREY	FLY_OVER	0.0	2.89	640.0	265.0	25.0	30.0	274.0	304.0	0.0		876.48	265.0	0.0	30.0	275.0	305.0
VM			0.0		876.48	265.0	0.0	30.0	275.0	305.0			0.0	0.0				
DF	KLIPR	FLY_BY			0.0	0.0					5.67	5.67	10000.0	300.0	25.0	67.0	359.0	426.0
TF	KEGGS	FLY_BY	5.67	5.67	10000.0	300.0	25.0	67.0	359.0	426.0	2.94	102.9	13000.0	300.0	1.64	73.0	376.0	449.0
TF	COOPP	FLY_BY	2.94	102.9	13000.0	300.0	1.64	73.0	376.0	449.0	0.0		17203.01	300.0	0.0	81.0	404.0	485.0
TF	ORCKA	FLY_BY	0.0		17203.01	300.0	0.0	81.0	404.0	485.0	5.32	49.11	25772.03	300.0	5.0	98.0	468.0	543.0
TF	ARCUS	FLY_BY	5.32	49.11	25772.03	300.0	5.0	98.0	468.0	543.0	8.82	54.11	36819.15	300.0	5.0	120.0	577.0	570.0
TF	YELAH	FLY_BY	8.82	54.11	36819.15	300.0	5.0	120.0	577.0	570.0	0.0		41000.0	300.0	0.0	128.0	629.0	570.0

RW24L:ORCKA CR:YELAH Criteria Failures

No failures.

Evaluation Input

ORCKA

Name:	RS Results ORCKA from KLAX
Project:	LAX ORCKA SID_Paperwork_12E-NEW24L_20160428
Last evaluated:	28-Apr-2016 09:25:39
Evaluated obstacles?:	false
Obstacle Database:	-
Evaluated terrain?:	false
Worst Case Vegetation Height (ft) AGL:	0
Wind Spiral Limiting Splay Angle (deg):	-
IDF Course Change Override?:	false

Procedure Criteria Failures

No failures.

Evaluation Notes and Warnings

No failures.

Database Effective Dates

Database	Date
UddfObstacle	03/09/2015
Tiled AIRNAV2	N/A
OEAAA	N/A
NFDC	03/31/2016
IFP_OFFLINE	N/A
AVNIS	04/28/2016
DOF	03/31/2016
AVNII_OFFLINE	N/A
AIRNAV2	04/28/2016
CIFP	04/28/2016

Notes: