

# DSNEE RNAV

## Point Of Contact

Organization Name - Southern California Metroplex

POC's Name - Robert E. Henry, SOCAL Metroplex Manager; Jose Gonzalez, SOCAL Metroplex NATCA CO-LEAD

Telephone Number - (661) 265-8434

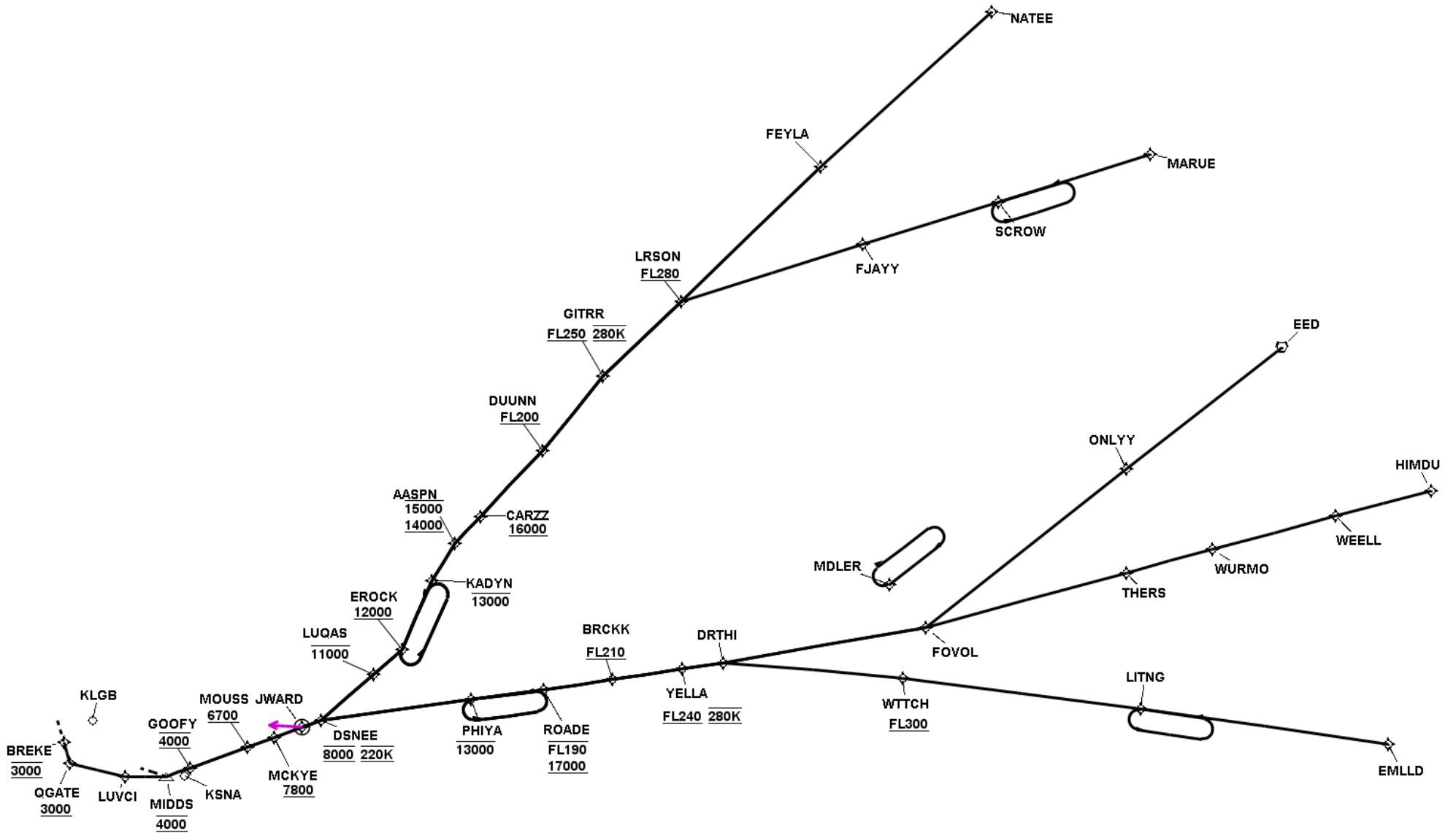
FAX Number - (661) 265-8338

Email Address - Robert.Henry@FAA.GOV; Jose.J.Gonzalez@FAA.GOV

## TARGETS Distribution Package

Version:5.0.5

Date: Mon Apr 11 12:37:00 PDT 2016



DSNEE RNAV

### En Route Transition Data - EED

DB	End Point	Latitude (D° M' S.ss")	Longitude (D° M' S.ss")	FO/FB	Leg	TC	MC	Distance	Altitude	Speed	MEA	MOCA	Arc Center Lat (D° M' S.ss")	Arc Center Lon (D° M' S.ss")	Arc Radius (NM)
AVNIS	EED VORTAC	N34 45 57.62	W114 28 26.78		IF										
	ONLY WP	N34 27 25.33	W114 57 22.47	FB	TF	232.36	218.36	30.21			17000	5200			
AVNIS	FOVOL WP	N34 03 12.00	W115 34 37.00	FB	TF	232.10	218.10	39.21			17000	6000			
	DRTHI WP	N33 57 53.23	W116 12 10.83	FB	TF	260.54	246.54	31.67			17000	8100			
	YELLA WP	N33 56 56.38	W116 19 49.39	FB	TF	261.57	247.57	6.43	+24000	280	13000	8100			
	BRCKK WP	N33 55 20.87	W116 32 40.97	FB	TF	261.61	247.61	10.82	+21000		13000	7500			
	ROADE WP	N33 53 42.15	W116 45 25.03	FB	TF	261.25	247.25	10.73	+17000 -19000		13000	12300			
	PHIYA WP	N33 52 13.73	W116 58 53.48	FB	TF	262.59	248.59	11.31	-13000		10700	10700			
	PHIYA WP	N33 52 13.73	W116 58 53.48		HM	262.60	248.60	10.00			8000				
	DSNEE WP	N33 49 05.48	W117 26 50.06	FB	TF	262.47	248.47	23.48	8000	220	8000	6100			

### En Route Transition Data - EMLLD

DB	End Point	Latitude (D° M' S.ss")	Longitude (D° M' S.ss")	FO/FB	Leg	TC	MC	Distance	Altitude	Speed	MEA	MOCA	Arc Center Lat (D° M' S.ss")	Arc Center Lon (D° M' S.ss")	Arc Radius (NM)
	EMLLD WP	N33 45 28.80	W114 08 46.00		IF										
	LITNG WP	N33 50 45.32	W114 54 43.84	FB	TF	278.04	264.04	38.66			17000	5600			
	LITNG WP	N33 50 45.32	W114 54 43.84		HM	278.04	264.04	10.00			17000				
	WTTCH WP	N33 55 33.39	W115 38 48.40	FB	TF	277.65	263.65	37.01	+30000		17000	6100			
	DRTHI WP	N33 57 53.23	W116 12 10.83	FB	TF	274.95	260.95	27.86			17000	8100			
	YELLA WP	N33 56 56.38	W116 19 49.39	FB	TF	261.57	247.57	6.43	+24000	280	13000	8100			
	BRCKK WP	N33 55 20.87	W116 32 40.97	FB	TF	261.61	247.61	10.82	+21000		13000	7500			
	ROADE WP	N33 53 42.15	W116 45 25.03	FB	TF	261.25	247.25	10.73	+17000 -19000		13000	12300			
	PHIYA WP	N33 52 13.73	W116 58 53.48	FB	TF	262.59	248.59	11.31	-13000		10700	10700			
	PHIYA WP	N33 52 13.73	W116 58 53.48		HM	262.59	248.59	10.00			8000				
	DSNEE WP	N33 49 05.48	W117 26 50.06	FB	TF	262.47	248.47	23.48	8000	220	8000	6100			

### En Route Transition Data - FEYLA

DB	End Point	Latitude (D° M' S.ss")	Longitude (D° M' S.ss")	FO/FB	Leg	TC	MC	Distance	Altitude	Speed	MEA	MOCA	Arc Center Lat (D° M' S.ss")	Arc Center Lon (D° M' S.ss")	Arc Radius (NM)
	FEYLA WP	N35 13 36.52	W115 54 04.77		IF										
	LRSON WP	N34 52 59.88	W116 19 58.65	FB	TF	226.06	212.06	29.59	+28000		17000	6800			
	GITRR WP	N34 41 35.50	W116 34 29.32	FB	TF	226.45	212.45	16.51	+25000	280	17000	7200			
	DUUNN WP	N34 30 14.36	W116 45 35.29	FB	TF	219.01	205.01	14.57	+20000		13000	8200			
	CARZZ WP	N34 20 12.15	W116 57 13.91	FB	TF	223.93	209.93	13.90	+16000		13000	10600			
	AASPN WP	N34 16 05.53	W117 01 57.56	FB	TF	223.69	209.69	5.67	+14000 -15000		10800	10800			
	KADYN WP	N34 10 18.69	W117 06 08.00	FB	TF	210.98	196.98	6.73	-13000		10800	10800			
	EROCK WP	N33 59 48.10	W117 11 45.83	FB	TF	204.05	190.05	11.49	+12000		9000	9000			
	EROCK WP	N33 59 48.10	W117 11 45.83		HM	204.05	190.05	10.00							
	LUQAS WP	N33 56 04.25	W117 16 58.39	FB	TF	229.34	215.34	5.71	-11000		8000	5300			
	DSNEE WP	N33 49 05.48	W117 26 50.06	FB	TF	229.73	215.73	10.77	8000	220	8000	5300			

### En Route Transition Data - HIMDU

DB	End Point	Latitude (D° M' S.ss")	Longitude (D° M' S.ss")	FO/FB	Leg	TC	MC	Distance	Altitude	Speed	MEA	MOCA	Arc Center Lat (D° M' S.ss")	Arc Center Lon (D° M' S.ss")	Arc Radius (NM)
AVNIS	HIMDU WP	N34 24 06.00	W114 00 51.00		IF										
	WEELL WP	N34 20 14.60	W114 18 29.50	FB	TF	255.31	241.31	15.10			17000	5300			
AVNIS	WURMO WP	N34 15 13.00	W114 41 26.00	FB	TF	255.32	241.32	19.66			17000	6400			
	THERS WP	N34 11 35.14	W114 57 17.65	FB	TF	254.67	240.67	13.64			17000	6600			
AVNIS	FOVOL WP	N34 03 12.00	W115 34 37.00	FB	TF	255.06	241.06	32.10			17000	6600			
	DRTHI WP	N33 57 53.23	W116 12 10.83	FB	TF	260.54	246.54	31.67			17000	8100			
	YELLA WP	N33 56 56.38	W116 19 49.39	FB	TF	261.57	247.57	6.43	+24000	280	13000	8100			
	BRCKK WP	N33 55 20.87	W116 32 40.97	FB	TF	261.61	247.61	10.82	+21000		13000	7500			
	ROADE WP	N33 53 42.15	W116 45 25.03	FB	TF	261.25	247.25	10.73	+17000 -19000		13000	12300			
	PHIYA WP	N33 52 13.73	W116 58 53.48	FB	TF	262.59	248.59	11.31	-13000		10700	10700			
	PHIYA WP	N33 52 13.73	W116 58 53.48		HM	262.60	248.60	10.00							
	DSNEE WP	N33 49 05.48	W117 26 50.06	FB	TF	262.47	248.47	23.48	8000	220	8000	6100			

### En Route Transition Data - LRSON

DB	End Point	Latitude (D° M' S.ss")	Longitude (D° M' S.ss")	FO/FB	Leg	TC	MC	Distance	Altitude	Speed	MEA	MOCA	Arc Center Lat (D° M' S.ss")	Arc Center Lon (D° M' S.ss")	Arc Radius (NM)
	LRSON WP	N34 52 59.88	W116 19 58.65		IF				+28000						
	GITRR WP	N34 41 35.50	W116 34 29.32	FB	TF	226.45	212.45	16.51	+25000	280	17000	7200			
	DUUNN WP	N34 30 14.36	W116 45 35.29	FB	TF	219.01	205.01	14.57	+20000		13000	8200			
	CARZZ WP	N34 20 12.15	W116 57 13.91	FB	TF	223.93	209.93	13.90	+16000		13000	10600			
	AASPN WP	N34 16 05.53	W117 01 57.56	FB	TF	223.69	209.69	5.67	+14000 -15000		10800	10800			
	KADYN WP	N34 10 18.69	W117 06 08.00	FB	TF	210.98	196.98	6.73	-13000		10800	10800			
	EROCK WP	N33 59 48.10	W117 11 45.83	FB	TF	204.05	190.05	11.49	+12000		9000	9000			
	EROCK WP	N33 59 48.10	W117 11 45.83		HM	204.05	190.05	10.00							
	LUQAS WP	N33 56 04.25	W117 16 58.39	FB	TF	229.34	215.34	5.71	-11000		8000	5300			
	DSNEE WP	N33 49 05.48	W117 26 50.06	FB	TF	229.73	215.73	10.77	8000	220	8000	5300			

### En Route Transition Data - MARUE

DB	End Point	Latitude (D° M' S.ss")	Longitude (D° M' S.ss")	FO/FB	Leg	TC	MC	Distance	Altitude	Speed	MEA	MOCA	Arc Center Lat (D° M' S.ss")	Arc Center Lon (D° M' S.ss")	Arc Radius (NM)
AVNIS	MARUE WP	N35 15 23.00	W114 52 55.00		IF										
	SCROW WP	N35 08 11.11	W115 21 01.56	FB	TF	252.81	238.81	24.13			17000	8500			
	SCROW WP	N35 08 11.11	W115 21 01.56		HM	252.81	238.81	10.00			17000				
	FJAYY WP	N35 01 40.02	W115 46 11.86	FB	TF	252.64	238.64	21.66			17000	8400			
	LRSON WP	N34 52 59.88	W116 19 58.65	FB	TF	252.85	238.85	29.08	+28000		17000	6800			
	GITRR WP	N34 41 35.50	W116 34 29.32	FB	TF	226.45	212.45	16.51	+25000	280	17000	7200			
	DUUNN WP	N34 30 14.36	W116 45 35.29	FB	TF	219.01	205.01	14.57	+20000		13000	8200			
	CARZZ WP	N34 20 12.15	W116 57 13.91	FB	TF	223.93	209.93	13.90	+16000		13000	10600			
	AASPN WP	N34 16 05.53	W117 01 57.56	FB	TF	223.69	209.69	5.67	+14000 -15000		10800	10800			
	KADYN WP	N34 10 18.69	W117 06 08.00	FB	TF	210.98	196.98	6.73	-13000		10800	10800			
	EROCK WP	N33 59 48.10	W117 11 45.83	FB	TF	204.05	190.05	11.49	+12000		9000	9000			
	EROCK WP	N33 59 48.10	W117 11 45.83		HM	204.05	190.05	10.00							
	LUQAS WP	N33 56 04.25	W117 16 58.39	FB	TF	229.34	215.34	5.71	-11000		8000	5300			
	DSNEE WP	N33 49 05.48	W117 26 50.06	FB	TF	229.73	215.73	10.77	8000	220	8000	5300			

### En Route Transition Data - NATEE

DB	End Point	Latitude (D° M' S.ss")	Longitude (D° M' S.ss")	FO/FB	Leg	TC	MC	Distance	Altitude	Speed	MEA	MOCA	Arc Center Lat (D° M' S.ss")	Arc Center Lon (D° M' S.ss")	Arc Radius (NM)
AVNIS	NATEE WP	N35 37 14.00	W115 22 26.00		IF										
	FEYLA WP	N35 13 36.52	W115 54 04.77	FB	TF	227.79	213.79	35.00			17000	10200			
	LRSON WP	N34 52 59.88	W116 19 58.65	FB	TF	226.06	212.06	29.59	+28000		17000	6800			
	GITRR WP	N34 41 35.50	W116 34 29.32	FB	TF	226.45	212.45	16.51	+25000	280	17000	7200			
	DUUNN WP	N34 30 14.36	W116 45 35.29	FB	TF	219.01	205.01	14.57	+20000		13000	8200			
	CARZZ WP	N34 20 12.15	W116 57 13.91	FB	TF	223.93	209.93	13.90	+16000		13000	10600			
	AASPN WP	N34 16 05.53	W117 01 57.56	FB	TF	223.69	209.69	5.67	+14000 -15000		10800	10800			
	KADYN WP	N34 10 18.69	W117 06 08.00	FB	TF	210.98	196.98	6.73	-13000		10800	10800			
	EROCK WP	N33 59 48.10	W117 11 45.83	FB	TF	204.05	190.05	11.49	+12000		9000	9000			
	EROCK WP	N33 59 48.10	W117 11 45.83		HM	204.05	190.05	10.00							
	LUQAS WP	N33 56 04.25	W117 16 58.39	FB	TF	229.34	215.34	5.71	-11000		8000	5300			
	DSNEE WP	N33 49 05.48	W117 26 50.06	FB	TF	229.73	215.73	10.77	8000	220	8000	5300			

### Common Route Data - Landing KRNA DSNEE

DB	End Point	Latitude (D° M' S.ss")	Longitude (D° M' S.ss")	FO/FB	Leg	TC	MC	Distance	Altitude	Speed	MEA	MOCA	Arc Center Lat (D° M' S.ss")	Arc Center Lon (D° M' S.ss")	Arc Radius (NM)
	DSNEE WP	N33 49 05.48	W117 26 50.06		IF				8000	220					
AVNIS	JWARD WP	N33 47 59.00	W117 30 20.00	FO	TF	249.24	235.24	3.12			7600	7600			
					VM	274.00	260.00								

### Runway Transition Data - KLGB:RW12

DB	End Point	Latitude (D° M' S.ss")	Longitude (D° M' S.ss")	FO/FB	Leg	TC	MC	Distance	Altitude	Speed	MEA	MOCA	Arc Center Lat (D° M' S.ss")	Arc Center Lon (D° M' S.ss")	Arc Radius (NM)
	DSNEE WP	N33 49 05.48	W117 26 50.06		IF				8000	220					
	MCKYE WP	N33 46 27.60	W117 35 24.73	FB	TF	249.86	235.86	7.62	+7800		7800	7800			
	MOUSS WP	N33 44 59.22	W117 40 20.47	FB	TF	250.34	236.34	4.36	+6700		6700	6700			
	GOOFY WP	N33 41 48.56	W117 51 02.13	FB	TF	250.47	236.47	9.47	4000		4000	4000			
AVNIS	MIDDS WP	N33 40 27.26	W117 55 32.80	FB	TF	250.26	236.26	4.00	4000		4000	2400			
AVNIS	LUVCI WP	N33 40 30.51	W118 03 03.64	FB	TF	270.53	256.53	6.27			4000	2400			
AVNIS	QGATE WP	N33 42 31.68	W118 13 22.02	FB	TF	283.24	269.24	8.83	+3000		3000	2300			
AVNIS	BREKE WP	N33 45 46.07	W118 14 22.11	FB	TF	345.52	331.52	3.34	3000		3000	2500			

## Runway Transition Data - KLGB:RW25R,RW30

DB	End Point	Latitude (D° M' S.ss")	Longitude (D° M' S.ss")	FO/FB	Leg	TC	MC	Distance	Altitude	Speed	MEA	MOCA	Arc Center Lat (D° M' S.ss")	Arc Center Lon (D° M' S.ss")	Arc Radius (NM)
	DSNEE WP	N33 49 05.48	W117 26 50.06		IF				8000	220					
	MCKYE WP	N33 46 27.60	W117 35 24.73	FB	TF	249.86	235.86	7.62	+7800		7800	7800			
	MOUSS WP	N33 44 59.22	W117 40 20.47	FB	TF	250.34	236.34	4.36	+6700		6700	6700			
	GOOFY WP	N33 41 48.56	W117 51 02.13	FB	TF	250.47	236.47	9.47	4000		4000	4000			
AVNIS	MIDDS WP	N33 40 27.26	W117 55 32.80	FB	TF	250.26	236.26	4.00	4000		4000	2400			

## Waypoint Data

DB	Waypoint	Arc Center	Lat-Long (DMS.S)	Latitude (Deg)	Longitude (Deg)	Latitude (D°, M.mm')	Longitude (D°, M.mm')	Latitude (D° M' S.ss")	Longitude (D° M' S.ss")
	AASPN WP		341605.53N-1170157.56W	N 34.2682038	W 117.0326546	N34 16.092	W117 01.959	N34 16 05.53	W117 01 57.56
	BRCKK WP		335520.87N-1163240.97W	N 33.9224625	W 116.5447125	N33 55.348	W116 32.683	N33 55 20.87	W116 32 40.97
AVNIS	BREKE WP		334546.07N-1181422.11W	N 33.7627972	W 118.2394750	N33 45.768	W118 14.368	N33 45 46.07	W118 14 22.11
	CARZZ WP		342012.15N-1165713.91W	N 34.3367091	W 116.9538647	N34 20.203	W116 57.232	N34 20 12.15	W116 57 13.91
	DRTHI WP		335753.23N-1161210.83W	N 33.9647869	W 116.2030075	N33 57.887	W116 12.180	N33 57 53.23	W116 12 10.83
	DSNEE WP		334905.48N-1172650.06W	N 33.8181891	W 117.4472393	N33 49.091	W117 26.834	N33 49 05.48	W117 26 50.06
	DUUNN WP		343014.36N-1164535.29W	N 34.5039883	W 116.7598025	N34 30.239	W116 45.588	N34 30 14.36	W116 45 35.29
AVNIS	EED VORTAC		344557.62N-1142826.78W	N 34.7660056	W 114.4741056	N34 45.960	W114 28.446	N34 45 57.62	W114 28 26.78
	EMLLD WP		334528.80N-1140846.00W	N 33.7580000	W 114.1461111	N33 45.480	W114 08.767	N33 45 28.80	W114 08 46.00
	EROCK WP		335948.10N-1171145.83W	N 33.9966935	W 117.1960639	N33 59.802	W117 11.764	N33 59 48.10	W117 11 45.83
	FEYLA WP		351336.52N-1155404.77W	N 35.2268107	W 115.9013237	N35 13.609	W115 54.079	N35 13 36.52	W115 54 04.77
	FJAYY WP		350140.02N-1154611.86W	N 35.0277836	W 115.7699612	N35 01.667	W115 46.198	N35 01 40.02	W115 46 11.86
AVNIS	FOVOL WP		340312.00N-1153437.00W	N 34.0533333	W 115.5769444	N34 03.200	W115 34.617	N34 03 12.00	W115 34 37.00
	GITRR WP		344135.50N-1163429.32W	N 34.6931944	W 116.5748111	N34 41.592	W116 34.489	N34 41 35.50	W116 34 29.32
	GOOFY WP		334148.56N-1175102.13W	N 33.6968228	W 117.8505906	N33 41.809	W117 51.035	N33 41 48.56	W117 51 02.13
AVNIS	HIMDU WP		342406.00N-1140051.00W	N 34.4016667	W 114.0141667	N34 24.100	W114 00.850	N34 24 06.00	W114 00 51.00
AVNIS	IPL VORTAC		324455.92N-1153030.90W	N 32.7488667	W 115.5085833	N32 44.932	W115 30.515	N32 44 55.92	W115 30 30.90
AVNIS	JWARD WP		334759.00N-1173020.00W	N 33.7997222	W 117.5055556	N33 47.983	W117 30.333	N33 47 59.00	W117 30 20.00
	KADYN WP		341018.69N-1170608.00W	N 34.1718586	W 117.1022232	N34 10.312	W117 06.133	N34 10 18.69	W117 06 08.00
	LITNG WP		335045.32N-1145443.84W	N 33.8459223	W 114.9121775	N33 50.755	W114 54.731	N33 50 45.32	W114 54 43.84
	LRSON WP		345259.88N-1161958.65W	N 34.8833003	W 116.3329575	N34 52.998	W116 19.977	N34 52 59.88	W116 19 58.65
	LUQAS WP		335604.25N-1171658.39W	N 33.9345142	W 117.2828874	N33 56.071	W117 16.973	N33 56 04.25	W117 16 58.39
AVNIS	LUVCI WP		334030.51N-1180303.64W	N 33.6751417	W 118.0510111	N33 40.508	W118 03.061	N33 40 30.51	W118 03 03.64
AVNIS	MARUE WP		351523.00N-1145255.00W	N 35.2563889	W 114.8819444	N35 15.383	W114 52.917	N35 15 23.00	W114 52 55.00
	MCKYE WP		334627.60N-1173524.73W	N 33.7743326	W 117.5902025	N33 46.460	W117 35.412	N33 46 27.60	W117 35 24.73
AVNIS	MIDDS WP		334027.26N-1175532.80W	N 33.6742389	W 117.9257778	N33 40.454	W117 55.547	N33 40 27.26	W117 55 32.80
	MOUSS WP		334459.22N-1174020.47W	N 33.7497837	W 117.6723537	N33 44.987	W117 40.341	N33 44 59.22	W117 40 20.47
AVNIS	NATEE WP		353714.00N-1152226.00W	N 35.6205556	W 115.3738889	N35 37.233	W115 22.433	N35 37 14.00	W115 22 26.00
	ONLYY WP		342725.33N-1145722.47W	N 34.4570353	W 114.9562417	N34 27.422	W114 57.374	N34 27 25.33	W114 57 22.47
	PHIYA WP		335213.73N-1165853.48W	N 33.8704806	W 116.9815222	N33 52.229	W116 58.891	N33 52 13.73	W116 58 53.48
AVNIS	QGATE WP		334231.68N-1181322.02W	N 33.7088000	W 118.2227833	N33 42.528	W118 13.367	N33 42 31.68	W118 13 22.02
	ROADE WP		335342.15N-1164525.03W	N 33.8950407	W 116.7569529	N33 53.702	W116 45.417	N33 53 42.15	W116 45 25.03
	SCROW WP		350811.11N-1152101.56W	N 35.1364207	W 115.3504340	N35 08.185	W115 21.026	N35 08 11.11	W115 21 01.56
	THERS WP		341135.14N-1145717.65W	N 34.1930957	W 114.9549022	N34 11.586	W114 57.294	N34 11 35.14	W114 57 17.65
	WEELL WP		342014.60N-1141829.50W	N 34.3373889	W 114.3081944	N34 20.243	W114 18.492	N34 20 14.60	W114 18 29.50



## Waypoint Data

DB	Waypoint	Arc Center	Lat-Long (DMS.S)	Latitude (Deg)	Longitude (Deg)	Latitude (D°, M.mm')	Longitude (D°, M.mm')	Latitude (D° M' S.ss")	Longitude (D° M' S.ss")
	WTTCH WP		335533.39N-1153848.40W	N 33.9259414	W 115.6467765	N33 55.556	W115 38.807	N33 55 33.39	W115 38 48.40
AVNIS	WURMO WP		341513.00N-1144126.00W	N 34.2536111	W 114.6905556	N34 15.217	W114 41.433	N34 15 13.00	W114 41 26.00
	YELLA WP		335656.38N-1161949.39W	N 33.9489944	W 116.3303851	N33 56.940	W116 19.823	N33 56 56.38	W116 19 49.39

## RS Results DSNEE RNAV

Last Evaluation: 11-Apr-2016 12:21:20

Reference Software Version: 1.5.3

### Route Evaluation for EED:KLGB:RW12

#### EED:KLGB:RW12 Evaluation Results Part 1/2

Leg Tp	End Pt	Turn Tp	Alt Restr	Alt Restr 2	Spd Restr	Turn Ang	Leg Length	Min Seg Length
IF	EED						0.0	0.0
TF	ONLYY	FLY_BY				0.02	30.21	1.0
TF	FOVOL	FLY_BY				28.78	39.21	13.88
TF	DRTHI	FLY_BY				1.39	31.67	13.88
TF	YELLA	FLY_BY	+24000.0		280.0	0.11	6.43	1.0
TF	BRCKK	FLY_BY	+21000.0			0.24	10.82	1.0
TF	ROADE	FLY_BY	+17000.0	-19000.0		1.46	10.73	1.0
TF	PHIYA	FLY_BY	-13000.0			0.0	11.31	1.0
TF	DSNEE	FLY_BY	8000.0		220.0	12.34	23.48	1.47
TF	MCKYE	FLY_BY	+7800.0			0.55	7.62	1.47
TF	MOUSS	FLY_BY	+6700.0			0.18	4.36	1.0
TF	GOOFY	FLY_BY	4000.0			0.12	9.47	1.0
TF	MIDDS	FLY_BY	4000.0			20.31	4.0	1.27
TF	LUVCI	FLY_BY				12.78	6.27	2.54
TF	QGATE	FLY_BY	+3000.0			62.38	8.83	2.9
TF	BREKE	FLY_BY	3000.0				3.34	1.63

## EED:KLGB:RW12 Evaluation Results Part 2/2

Leg Tp	End Pt	Turn Tp	DTA1	DTA1 Turn Rad	DTA1 Turn Alt	DTA1 Turn Spd	DTA1 Bank Ang	DTA1 Tailwind	DTA1 True Airspd	DTA1 vGround	DTA2	DTA2 Turn Rad	DTA2 Turn Alt	DTA2 Turn Spd	DTA2 Bank Ang	DTA2 Tailwind	DTA2 True Airspd	DTA2 vGround
IF	EED				0.0	0.0							0.0	0.0				
TF	ONLYY	FLY_BY	0.0		41000.0	300.0	0.0	128.0	629.0	570.0	0.0		41000.0	300.0	0.0	128.0	629.0	570.0
TF	FOVOL	FLY_BY	0.0		41000.0	300.0	0.0	128.0	629.0	570.0	13.88	54.11	33525.36	300.0	5.0	113.0	541.0	570.0
TF	DRTHI	FLY_BY	13.88	54.11	33525.36	300.0	5.0	113.0	541.0	570.0	0.59	48.93	25606.82	300.0	5.0	98.0	467.0	542.0
TF	YELLA	FLY_BY	0.59	48.93	25606.82	300.0	5.0	98.0	467.0	542.0	0.04	46.08	24000.0	280.0	5.0	95.0	424.0	526.0
TF	BRCKK	FLY_BY	0.04	46.08	24000.0	280.0	5.0	95.0	424.0	526.0	0.09	40.98	21000.0	280.0	5.0	89.0	402.0	496.0
TF	ROADE	FLY_BY	0.09	40.98	21000.0	280.0	5.0	89.0	402.0	496.0	2.21	173.59	17000.0	280.0	1.0	81.0	375.0	456.0
TF	PHIYA	FLY_BY	2.21	173.59	17000.0	280.0	1.0	81.0	375.0	456.0	0.0		13000.0	280.0	0.0	73.0	351.0	424.0
TF	DSNEE	FLY_BY	0.0		13000.0	280.0	0.0	73.0	351.0	424.0	1.47	13.63	8000.0	220.0	6.17	63.0	255.0	318.0
TF	MCKYE	FLY_BY	1.47	13.63	8000.0	220.0	6.17	63.0	255.0	318.0	0.4	83.36	7800.0	220.0	1.0	62.0	254.0	316.0
TF	MOUSS	FLY_BY	0.4	83.36	7800.0	220.0	1.0	62.0	254.0	316.0	0.13	80.23	6700.0	220.0	1.0	60.0	250.0	310.0
TF	GOOFY	FLY_BY	0.13	80.23	6700.0	220.0	1.0	60.0	250.0	310.0	0.07	72.65	4000.0	220.0	1.0	55.0	240.0	295.0
TF	MIDDS	FLY_BY	0.07	72.65	4000.0	220.0	1.0	55.0	240.0	295.0	1.27	7.08	4000.0	220.0	10.16	55.0	240.0	295.0
TF	LUVCI	FLY_BY	1.27	7.08	4000.0	220.0	10.16	55.0	240.0	295.0	1.27	11.32	4000.0	220.0	6.39	55.0	240.0	295.0
TF	QGATE	FLY_BY	1.27	11.32	4000.0	220.0	6.39	55.0	240.0	295.0	1.63	2.7	3835.01	220.0	25.0	55.0	239.0	294.0
TF	BREKE	FLY_BY	1.63	2.7	3835.01	220.0	25.0	55.0	239.0	294.0	0.0		3000.0	220.0	0.0	53.0	236.0	289.0

DSNEE RNAV

## EED:KLGB:RW12 Obstacle Evaluation

Start Pt	End Pt	Name	Source	AC (H/V) (ft) AMSL)	Lat	Long	Height (ft) AMSL	Mnts Area	Pri/Sec Area	ROC (ft)	WCVH (ft)	MOCA (ft)	Min OCS Alt (ft)	Date
EED	ONLYY	TerrainPt_23_EED:KLGB:RW12_EED:ONLYY		4E (+-250/+125)	N34° 37' 45.00"	W114° 35' 03.00"	2975.72	true	P	2000.0		5176	5175.72	11-Apr-2016 12:29:09
ONLYY	FOVOL	TerrainPt_27_EED:KLGB:RW12_ONLYY:FOVOL		4E (+-250/+125)	N34° 21' 18.00"	W115° 11' 06.00"	3746.72	true	P	2000.0		5947	5946.72	11-Apr-2016 12:29:09
FOVOL	DRTHI	TerrainPt_38_EED:KLGB:RW12_FOVOL:DRTHI		4E (+-250/+125)	N34° 00' 24.00"	W116° 14' 30.00"	5820.21	true	P	2000.0		8021	8020.21	11-Apr-2016 12:29:09
DRTHI	YELLA	TerrainPt_0_EED:KLGB:RW12_DRTHI:YELLA		4E (+-250/+125)	N34° 00' 24.00"	W116° 14' 30.00"	5820.21	true	P	2000.0		8021	8020.21	11-Apr-2016 12:29:09
YELLA	BRCKK	TerrainPt_14_EED:KLGB:RW12_YELLA:BRCKK		4E (+-250/+125)	N34° 00' 57.00"	W116° 19' 39.00"	5249.34	true	P	2000.0		7450	7449.34	11-Apr-2016 12:29:09
BRCKK	ROADE	OBS-4001-IPDS	AIRNAV 2	6C (+-1000/+20)	N33° 48' 54.00"	W116° 40' 48.00"	11034.0	true	S	1167.98		12202	12201.98	11-Apr-2016 12:16:42
ROADE	PHIYA	TerrainPt_27_EED:KLGB:RW12_ROADE:PHIYA		4E (+-250/+125)	N33° 50' 06.00"	W116° 43' 39.00"	8421.92	true	P	2000.0		10622	10621.92	11-Apr-2016 12:29:09
PHIYA	DSNEE	TerrainPt_30_EED:KLGB:RW12_PHIYA:DSNEE		4E (+-250/+125)	N33° 49' 24.00"	W116° 56' 27.00"	3887.8	true	P	2000.0		6088	6087.8	11-Apr-2016 12:29:09
DSNEE	MCKYE	TerrainPt_31_EED:KLGB:RW12_DSNEE:MCKYE		4E (+-250/+125)	N33° 43' 09.00"	W117° 32' 39.00"	5501.97	true	P	2000.0		7702	7701.97	11-Apr-2016 12:29:09
MCKYE	MOUSS	TerrainPt_45_EED:KLGB:RW12_MCKYE:MOUSS		4E (+-250/+125)	N33° 43' 09.00"	W117° 32' 45.00"	5439.63	false	P	1000.0		6640	6639.63	11-Apr-2016 12:29:09
MOUSS	GOOFY	TerrainPt_9_EED:KLGB:RW12_MOUSS:GOOFY		4E (+-250/+125)	N33° 43' 57.00"	W117° 41' 57.00"	1774.93	true	P	2000.0		3975	3974.93	11-Apr-2016 12:29:09
GOOFY	MIDDS	06-028353	AIRNAV 2	1A (+-20/+3)	N33° 41' 35.31"	W117° 52' 56.80"	323.0	true	P	2000.0		2323	2323.0	11-Apr-2016 12:17:16
MIDDS	LUVCI	TerrainPt_14_EED:KLGB:RW12_MIDDS:LUVCI		4E (+-250/+125)	N33° 40' 57.00"	W118° 00' 21.00"	131.23	true	P	2000.0		2332	2331.23	11-Apr-2016 12:29:09
LUVCI	QGATE	TerrainPt_2_EED:KLGB:RW12_LUVCI:QGATE		4E (+-250/+125)	N33° 42' 27.00"	W118° 02' 45.00"	75.46	true	P	2000.0		2276	2275.46	11-Apr-2016 12:29:09
QGATE	BREKE	06-022791	AIRNAV 2	7E (+-3038/+125)	N33° 43' 32.45"	W118° 15' 32.69"	420.0	true	P	2000.0		2420	2420.0	11-Apr-2016 12:16:39

## EED:KLGB:RW12 Criteria Failures

No failures.

## Route Evaluation for EED:KLGB:RW25R,RW30

### EED:KLGB:RW25R,RW30 Evaluation Results Part 1/2

Leg Tp	End Pt	Turn Tp	Alt Restr	Alt Restr 2	Spd Restr	Turn Ang	Leg Length	Min Seg Length
IF	EED						0.0	0.0
TF	ONLYY	FLY_BY				0.02	30.21	1.0
TF	FOVOL	FLY_BY				28.78	39.21	13.88
TF	DRTHI	FLY_BY				1.39	31.67	13.88
TF	YELLA	FLY_BY	+24000.0		280.0	0.11	6.43	1.0
TF	BRCKK	FLY_BY	+21000.0			0.24	10.82	1.0
TF	ROADE	FLY_BY	+17000.0	-19000.0		1.46	10.73	1.0
TF	PHIYA	FLY_BY	-13000.0			0.0	11.31	1.0
TF	DSNEE	FLY_BY	8000.0		220.0	12.34	23.48	1.47
TF	MCKYE	FLY_BY	+7800.0			0.55	7.62	1.47
TF	MOUSS	FLY_BY	+6700.0			0.18	4.36	1.0
TF	GOOFY	FLY_BY	4000.0			0.12	9.47	1.0
TF	MIDDS	FLY_BY	4000.0			38.63	4.0	1.27

### EED:KLGB:RW25R,RW30 Evaluation Results Part 2/2

Leg Tp	End Pt	Turn Tp	DTA1	DTA1 Turn Rad	DTA1 Turn Alt	DTA1 Turn Spd	DTA1 Bank Ang	DTA1 Tailwind	DTA1 True Airspd	DTA1 vGround	DTA2	DTA2 Turn Rad	DTA2 Turn Alt	DTA2 Turn Spd	DTA2 Bank Ang	DTA2 Tailwind	DTA2 True Airspd	DTA2 vGround
IF	EED				0.0	0.0							0.0	0.0				
TF	ONLYY	FLY_BY	0.0		41000.0	300.0	0.0	128.0	629.0	570.0	0.0		41000.0	300.0	0.0	128.0	629.0	570.0
TF	FOVOL	FLY_BY	0.0		41000.0	300.0	0.0	128.0	629.0	570.0	13.88	54.11	33525.36	300.0	5.0	113.0	541.0	570.0
TF	DRTHI	FLY_BY	13.88	54.11	33525.36	300.0	5.0	113.0	541.0	570.0	0.59	48.93	25606.82	300.0	5.0	98.0	467.0	542.0
TF	YELLA	FLY_BY	0.59	48.93	25606.82	300.0	5.0	98.0	467.0	542.0	0.04	46.08	24000.0	280.0	5.0	95.0	424.0	526.0
TF	BRCKK	FLY_BY	0.04	46.08	24000.0	280.0	5.0	95.0	424.0	526.0	0.09	40.98	21000.0	280.0	5.0	89.0	402.0	496.0
TF	ROADE	FLY_BY	0.09	40.98	21000.0	280.0	5.0	89.0	402.0	496.0	2.21	173.59	17000.0	280.0	1.0	81.0	375.0	456.0
TF	PHIYA	FLY_BY	2.21	173.59	17000.0	280.0	1.0	81.0	375.0	456.0	0.0		13000.0	280.0	0.0	73.0	351.0	424.0
TF	DSNEE	FLY_BY	0.0		13000.0	280.0	0.0	73.0	351.0	424.0	1.47	13.63	8000.0	220.0	6.17	63.0	255.0	318.0
TF	MCKYE	FLY_BY	1.47	13.63	8000.0	220.0	6.17	63.0	255.0	318.0	0.4	83.36	7800.0	220.0	1.0	62.0	254.0	316.0
TF	MOUSS	FLY_BY	0.4	83.36	7800.0	220.0	1.0	62.0	254.0	316.0	0.13	80.23	6700.0	220.0	1.0	60.0	250.0	310.0
TF	GOOFY	FLY_BY	0.13	80.23	6700.0	220.0	1.0	60.0	250.0	310.0	0.07	72.65	4000.0	220.0	1.0	55.0	240.0	295.0
TF	MIDDS	FLY_BY	0.07	72.65	4000.0	220.0	1.0	55.0	240.0	295.0	1.27	3.62	4000.0	220.0	19.32	55.0	240.0	295.0

DSNEE RNAV

## EED:KLGB:RW25R,RW30 Obstacle Evaluation

Start Pt	End Pt	Name	Source	AC (H/V) (ft) AMSL)	Lat	Long	Height (ft) AMSL	Mnts Area	Pri/Sec Area	ROC (ft)	WCVH (ft)	MOCA (ft)	Min OCS Alt (ft)	Date
EED	ONLYY	TerrainPt_23_EED:KLGB:RW12_ONLYY		4E (+-250/+125)	N34° 37' 45.00"	W114° 35' 03.00"	2975.72	true	P	2000.0		5176	5175.72	11-Apr-2016 12:29:09
ONLYY	FOVOL	TerrainPt_27_ONLYY:FOVOL		4E (+-250/+125)	N34° 21' 18.00"	W115° 11' 06.00"	3746.72	true	P	2000.0		5947	5946.72	11-Apr-2016 12:29:09
FOVOL	DRTHI	TerrainPt_38_FOVOL:DRTHI		4E (+-250/+125)	N34° 00' 24.00"	W116° 14' 30.00"	5820.21	true	P	2000.0		8021	8020.21	11-Apr-2016 12:29:09
DRTHI	YELLA	TerrainPt_0_DRTHI:YELLA		4E (+-250/+125)	N34° 00' 24.00"	W116° 14' 30.00"	5820.21	true	P	2000.0		8021	8020.21	11-Apr-2016 12:29:09
YELLA	BRCKK	TerrainPt_14_YELLA:BRCKK		4E (+-250/+125)	N34° 00' 57.00"	W116° 19' 39.00"	5249.34	true	P	2000.0		7450	7449.34	11-Apr-2016 12:29:09
BRCKK	ROADE	OBS-4001-IPDS	AIRNAV 2	6C (+-1000/+20)	N33° 48' 54.00"	W116° 40' 48.00"	11034.0	true	S	1167.98		12202	12201.98	11-Apr-2016 12:16:42
ROADE	PHIYA	TerrainPt_27_ROADE:PHIYA		4E (+-250/+125)	N33° 50' 06.00"	W116° 43' 39.00"	8421.92	true	P	2000.0		10622	10621.92	11-Apr-2016 12:29:09
PHIYA	DSNEE	TerrainPt_30_PHIYA:DSNEE		4E (+-250/+125)	N33° 49' 24.00"	W116° 56' 27.00"	3887.8	true	P	2000.0		6088	6087.8	11-Apr-2016 12:29:09
DSNEE	MCKYE	TerrainPt_31_DSNEE:MCKYE		4E (+-250/+125)	N33° 43' 09.00"	W117° 32' 39.00"	5501.97	true	P	2000.0		7702	7701.97	11-Apr-2016 12:29:09
MCKYE	MOUSS	TerrainPt_45_MCKYE:MOUSS		4E (+-250/+125)	N33° 43' 09.00"	W117° 32' 45.00"	5439.63	false	P	1000.0		6640	6639.63	11-Apr-2016 12:29:09
MOUSS	GOOFY	TerrainPt_9_MOUSS:GOOFY		4E (+-250/+125)	N33° 43' 57.00"	W117° 41' 57.00"	1774.93	true	P	2000.0		3975	3974.93	11-Apr-2016 12:29:09
GOOFY	MIDDS	06-028353	AIRNAV 2	1A (+-20/+3)	N33° 41' 35.31"	W117° 52' 56.80"	323.0	true	P	2000.0		2323	2323.0	11-Apr-2016 12:17:16

## EED:KLGB:RW25R,RW30 Criteria Failures

No failures.

## Route Evaluation for EMLLD:KLGB:RW12

### EMLLD:KLGB:RW12 Evaluation Results Part 1/2

Leg Tp	End Pt	Turn Tp	Alt Restr	Alt Restr 2	Spd Restr	Turn Ang	Leg Length	Min Seg Length
IF	EMLLD						0.0	0.0
TF	LITNG	FLY_BY				0.03	38.66	1.0
TF	WTTCH	FLY_BY	+30000.0			2.29	37.01	1.0
TF	DRTHI	FLY_BY				13.06	27.86	5.6
TF	YELLA	FLY_BY	+24000.0		280.0	0.11	6.43	5.6
TF	BRCKK	FLY_BY	+21000.0			0.24	10.82	1.0
TF	ROADE	FLY_BY	+17000.0	-19000.0		1.46	10.73	1.0
TF	PHIYA	FLY_BY	-13000.0			0.0	11.31	1.0
TF	DSNEE	FLY_BY	8000.0		220.0	12.34	23.48	1.47
TF	MCKYE	FLY_BY	+7800.0			0.55	7.62	1.47
TF	MOUSS	FLY_BY	+6700.0			0.18	4.36	1.0
TF	GOOFY	FLY_BY	4000.0			0.12	9.47	1.0
TF	MIDDS	FLY_BY	4000.0			20.31	4.0	1.27
TF	LUVCI	FLY_BY				12.78	6.27	2.54
TF	QGATE	FLY_BY	+3000.0			62.38	8.83	2.9
TF	BREKE	FLY_BY	3000.0				3.34	1.63

DSNEE RNAV

## EMLLD:KLGB:RW12 Evaluation Results Part 2/2

Leg Tp	End Pt	Turn Tp	DTA1	DTA1 Turn Rad	DTA1 Turn Alt	DTA1 Turn Spd	DTA1 Bank Ang	DTA1 Tailwind	DTA1 True Airspd	DTA1 vGround	DTA2	DTA2 Turn Rad	DTA2 Turn Alt	DTA2 Turn Spd	DTA2 Bank Ang	DTA2 Tailwind	DTA2 True Airspd	DTA2 vGround
IF	EMLLD				0.0	0.0							0.0	0.0				
TF	LITNG	FLY_BY	0.0		41000.0	300.0	0.0	128.0	629.0	570.0	0.01	54.11	41000.0	300.0	5.0	128.0	629.0	570.0
TF	WTTCH	FLY_BY	0.01	54.11	41000.0	300.0	5.0	128.0	629.0	570.0	1.08	54.11	32572.3	300.0	5.0	111.0	532.0	570.0
TF	DRTHI	FLY_BY	1.08	54.11	32572.3	300.0	5.0	111.0	532.0	570.0	5.6	48.93	25606.82	300.0	5.0	98.0	467.0	542.0
TF	YELLA	FLY_BY	5.6	48.93	25606.82	300.0	5.0	98.0	467.0	542.0	0.04	46.08	24000.0	280.0	5.0	95.0	424.0	526.0
TF	BRCKK	FLY_BY	0.04	46.08	24000.0	280.0	5.0	95.0	424.0	526.0	0.09	40.98	21000.0	280.0	5.0	89.0	402.0	496.0
TF	ROADE	FLY_BY	0.09	40.98	21000.0	280.0	5.0	89.0	402.0	496.0	2.21	173.59	17000.0	280.0	1.0	81.0	375.0	456.0
TF	PHIYA	FLY_BY	2.21	173.59	17000.0	280.0	1.0	81.0	375.0	456.0	0.0		13000.0	280.0	0.0	73.0	351.0	424.0
TF	DSNEE	FLY_BY	0.0		13000.0	280.0	0.0	73.0	351.0	424.0	1.47	13.63	8000.0	220.0	6.17	63.0	255.0	318.0
TF	MCKYE	FLY_BY	1.47	13.63	8000.0	220.0	6.17	63.0	255.0	318.0	0.4	83.36	7800.0	220.0	1.0	62.0	254.0	316.0
TF	MOUSS	FLY_BY	0.4	83.36	7800.0	220.0	1.0	62.0	254.0	316.0	0.13	80.23	6700.0	220.0	1.0	60.0	250.0	310.0
TF	GOOFY	FLY_BY	0.13	80.23	6700.0	220.0	1.0	60.0	250.0	310.0	0.07	72.65	4000.0	220.0	1.0	55.0	240.0	295.0
TF	MIDDS	FLY_BY	0.07	72.65	4000.0	220.0	1.0	55.0	240.0	295.0	1.27	7.08	4000.0	220.0	10.16	55.0	240.0	295.0
TF	LUVCI	FLY_BY	1.27	7.08	4000.0	220.0	10.16	55.0	240.0	295.0	1.27	11.32	4000.0	220.0	6.39	55.0	240.0	295.0
TF	QGATE	FLY_BY	1.27	11.32	4000.0	220.0	6.39	55.0	240.0	295.0	1.63	2.7	3835.01	220.0	25.0	55.0	239.0	294.0
TF	BREKE	FLY_BY	1.63	2.7	3835.01	220.0	25.0	55.0	239.0	294.0	0.0		3000.0	220.0	0.0	53.0	236.0	289.0

DSNEE RNAV

## EMLLD:KLGB:RW12 Obstacle Evaluation

Start Pt	End Pt	Name	Source	AC (H/V) (ft) AMSL)	Lat	Long	Height (ft) AMSL	Mnts Area	Pri/Sec Area	ROC (ft)	WCVH (ft)	MOCA (ft)	Min OCS Alt (ft)	Date
EMLLD	LITNG	TerrainPt_7_EMLLD:KLGB:RW12_EMLLD:LITNG		4E (+-250/+125)	N33° 51' 36.00"	W114° 40' 18.00"	3375.98	true	P	2000.0		5576	5575.98	11-Apr-2016 12:29:10
LITNG	WTTCH	TerrainPt_20_EMLLD:KLGB:RW12_LITNG:WTTCH		4E (+-250/+125)	N33° 50' 00.00"	W115° 02' 21.00"	3845.14	true	P	2000.0		6046	6045.14	11-Apr-2016 12:29:10
WTTCH	DRTHI	TerrainPt_28_EMLLD:KLGB:RW12_WTTCH:DRTHI		4E (+-250/+125)	N34° 00' 24.00"	W116° 14' 30.00"	5820.21	true	P	2000.0		8021	8020.21	11-Apr-2016 12:29:10
DRTHI	YELLA	TerrainPt_0_EED:KLGB:RW12_DRTHI:YELLA		4E (+-250/+125)	N34° 00' 24.00"	W116° 14' 30.00"	5820.21	true	P	2000.0		8021	8020.21	11-Apr-2016 12:29:09
YELLA	BRCKK	TerrainPt_14_EED:KLGB:RW12_YELLA:BRCKK		4E (+-250/+125)	N34° 00' 57.00"	W116° 19' 39.00"	5249.34	true	P	2000.0		7450	7449.34	11-Apr-2016 12:29:09
BRCKK	ROADE	OBS-4001-IPDS	AIRNAV 2	6C (+-1000/+20)	N33° 48' 54.00"	W116° 40' 48.00"	11034.0	true	S	1167.98		12202	12201.98	11-Apr-2016 12:16:42
ROADE	PHIYA	TerrainPt_27_EED:KLGB:RW12_ROADE:PHIYA		4E (+-250/+125)	N33° 50' 06.00"	W116° 43' 39.00"	8421.92	true	P	2000.0		10622	10621.92	11-Apr-2016 12:29:09
PHIYA	DSNEE	TerrainPt_30_EED:KLGB:RW12_PHIYA:DSNEE		4E (+-250/+125)	N33° 49' 24.00"	W116° 56' 27.00"	3887.8	true	P	2000.0		6088	6087.8	11-Apr-2016 12:29:09
DSNEE	MCKYE	TerrainPt_31_EED:KLGB:RW12_DSNEE:MCKYE		4E (+-250/+125)	N33° 43' 09.00"	W117° 32' 39.00"	5501.97	true	P	2000.0		7702	7701.97	11-Apr-2016 12:29:09
MCKYE	MOUSS	TerrainPt_45_EED:KLGB:RW12_MCKYE:MOUSS		4E (+-250/+125)	N33° 43' 09.00"	W117° 32' 45.00"	5439.63	false	P	1000.0		6640	6639.63	11-Apr-2016 12:29:09
MOUSS	GOOFY	TerrainPt_9_EED:KLGB:RW12_MOUSS:GOOFY		4E (+-250/+125)	N33° 43' 57.00"	W117° 41' 57.00"	1774.93	true	P	2000.0		3975	3974.93	11-Apr-2016 12:29:09
GOOFY	MIDDS	06-028353	AIRNAV 2	1A (+-20/+3)	N33° 41' 35.31"	W117° 52' 56.80"	323.0	true	P	2000.0		2323	2323.0	11-Apr-2016 12:17:16
MIDDS	LUVCI	TerrainPt_14_EED:KLGB:RW12_MIDDS:LUVCI		4E (+-250/+125)	N33° 40' 57.00"	W118° 00' 21.00"	131.23	true	P	2000.0		2332	2331.23	11-Apr-2016 12:29:09
LUVCI	QGATE	TerrainPt_2_EED:KLGB:RW12_LUVCI:QGATE		4E (+-250/+125)	N33° 42' 27.00"	W118° 02' 45.00"	75.46	true	P	2000.0		2276	2275.46	11-Apr-2016 12:29:09
QGATE	BREKE	06-022791	AIRNAV 2	7E (+-3038/+125)	N33° 43' 32.45"	W118° 15' 32.69"	420.0	true	P	2000.0		2420	2420.0	11-Apr-2016 12:16:39

## EMLLD:KLGB:RW12 Criteria Failures

No failures.



## Route Evaluation for EMLLD:KLGB:RW25R,RW30

### EMLLD:KLGB:RW25R,RW30 Evaluation Results Part 1/2

Leg Tp	End Pt	Turn Tp	Alt Restr	Alt Restr 2	Spd Restr	Turn Ang	Leg Length	Min Seg Length
IF	EMLLD						0.0	0.0
TF	LITNG	FLY_BY				0.03	38.66	1.0
TF	WTTCH	FLY_BY	+30000.0			2.29	37.01	1.0
TF	DRTHI	FLY_BY				13.06	27.86	5.6
TF	YELLA	FLY_BY	+24000.0		280.0	0.11	6.43	5.6
TF	BRCKK	FLY_BY	+21000.0			0.24	10.82	1.0
TF	ROADE	FLY_BY	+17000.0	-19000.0		1.46	10.73	1.0
TF	PHIYA	FLY_BY	-13000.0			0.0	11.31	1.0
TF	DSNEE	FLY_BY	8000.0		220.0	12.34	23.48	1.47
TF	MCKYE	FLY_BY	+7800.0			0.55	7.62	1.47
TF	MOUSS	FLY_BY	+6700.0			0.18	4.36	1.0
TF	GOOFY	FLY_BY	4000.0			0.12	9.47	1.0
TF	MIDDS	FLY_BY	4000.0			38.63	4.0	1.27

### EMLLD:KLGB:RW25R,RW30 Evaluation Results Part 2/2

Leg Tp	End Pt	Turn Tp	DTA1	DTA1 Turn Rad	DTA1 Turn Alt	DTA1 Turn Spd	DTA1 Bank Ang	DTA1 Tailwind	DTA1 True Airspd	DTA1 vGround	DTA2	DTA2 Turn Rad	DTA2 Turn Alt	DTA2 Turn Spd	DTA2 Bank Ang	DTA2 Tailwind	DTA2 True Airspd	DTA2 vGround
IF	EMLLD				0.0	0.0							0.0	0.0				
TF	LITNG	FLY_BY	0.0		41000.0	300.0	0.0	128.0	629.0	570.0	0.01	54.11	41000.0	300.0	5.0	128.0	629.0	570.0
TF	WTTCH	FLY_BY	0.01	54.11	41000.0	300.0	5.0	128.0	629.0	570.0	1.08	54.11	32572.3	300.0	5.0	111.0	532.0	570.0
TF	DRTHI	FLY_BY	1.08	54.11	32572.3	300.0	5.0	111.0	532.0	570.0	5.6	48.93	25606.82	300.0	5.0	98.0	467.0	542.0
TF	YELLA	FLY_BY	5.6	48.93	25606.82	300.0	5.0	98.0	467.0	542.0	0.04	46.08	24000.0	280.0	5.0	95.0	424.0	526.0
TF	BRCKK	FLY_BY	0.04	46.08	24000.0	280.0	5.0	95.0	424.0	526.0	0.09	40.98	21000.0	280.0	5.0	89.0	402.0	496.0
TF	ROADE	FLY_BY	0.09	40.98	21000.0	280.0	5.0	89.0	402.0	496.0	2.21	173.59	17000.0	280.0	1.0	81.0	375.0	456.0
TF	PHIYA	FLY_BY	2.21	173.59	17000.0	280.0	1.0	81.0	375.0	456.0	0.0		13000.0	280.0	0.0	73.0	351.0	424.0
TF	DSNEE	FLY_BY	0.0		13000.0	280.0	0.0	73.0	351.0	424.0	1.47	13.63	8000.0	220.0	6.17	63.0	255.0	318.0
TF	MCKYE	FLY_BY	1.47	13.63	8000.0	220.0	6.17	63.0	255.0	318.0	0.4	83.36	7800.0	220.0	1.0	62.0	254.0	316.0
TF	MOUSS	FLY_BY	0.4	83.36	7800.0	220.0	1.0	62.0	254.0	316.0	0.13	80.23	6700.0	220.0	1.0	60.0	250.0	310.0
TF	GOOFY	FLY_BY	0.13	80.23	6700.0	220.0	1.0	60.0	250.0	310.0	0.07	72.65	4000.0	220.0	1.0	55.0	240.0	295.0
TF	MIDDS	FLY_BY	0.07	72.65	4000.0	220.0	1.0	55.0	240.0	295.0	1.27	3.62	4000.0	220.0	19.32	55.0	240.0	295.0

DSNEE RNAV

## EMLLD:KLGB:RW25R,RW30 Obstacle Evaluation

Start Pt	End Pt	Name	Source	AC (H/V) (ft) AMSL)	Lat	Long	Height (ft) AMSL	Mnts Area	Pri/Sec Area	ROC (ft)	WCVH (ft)	MOCA (ft)	Min OCS Alt (ft)	Date
EMLLD	LITNG	TerrainPt_7_EMLLD:KLGB:RW12_EMLLD:LITNG		4E (+-250/+125)	N33° 51' 36.00"	W114° 40' 18.00"	3375.98	true	P	2000.0		5576	5575.98	11-Apr-2016 12:29:10
LITNG	WTTCH	TerrainPt_20_EMLLD:KLGB:RW12_LITNG:WTTCH		4E (+-250/+125)	N33° 50' 00.00"	W115° 02' 21.00"	3845.14	true	P	2000.0		6046	6045.14	11-Apr-2016 12:29:10
WTTCH	DRTHI	TerrainPt_28_EMLLD:KLGB:RW12_WTTCH:DRTHI		4E (+-250/+125)	N34° 00' 24.00"	W116° 14' 30.00"	5820.21	true	P	2000.0		8021	8020.21	11-Apr-2016 12:29:10
DRTHI	YELLA	TerrainPt_0_EED:KLGB:RW12_DRTHI:YELLA		4E (+-250/+125)	N34° 00' 24.00"	W116° 14' 30.00"	5820.21	true	P	2000.0		8021	8020.21	11-Apr-2016 12:29:09
YELLA	BRCKK	TerrainPt_14_EED:KLGB:RW12_YELLA:BRCKK		4E (+-250/+125)	N34° 00' 57.00"	W116° 19' 39.00"	5249.34	true	P	2000.0		7450	7449.34	11-Apr-2016 12:29:09
BRCKK	ROADE	OBS-4001-IPDS	AIRNAV 2	6C (+-1000/+20)	N33° 48' 54.00"	W116° 40' 48.00"	11034.0	true	S	1167.98		12202	12201.98	11-Apr-2016 12:16:42
ROADE	PHIYA	TerrainPt_27_EED:KLGB:RW12_ROADE:PHIYA		4E (+-250/+125)	N33° 50' 06.00"	W116° 43' 39.00"	8421.92	true	P	2000.0		10622	10621.92	11-Apr-2016 12:29:09
PHIYA	DSNEE	TerrainPt_30_EED:KLGB:RW12_PHIYA:DSNEE		4E (+-250/+125)	N33° 49' 24.00"	W116° 56' 27.00"	3887.8	true	P	2000.0		6088	6087.8	11-Apr-2016 12:29:09
DSNEE	MCKYE	TerrainPt_31_EED:KLGB:RW12_DSNEE:MCKYE		4E (+-250/+125)	N33° 43' 09.00"	W117° 32' 39.00"	5501.97	true	P	2000.0		7702	7701.97	11-Apr-2016 12:29:09
MCKYE	MOUSS	TerrainPt_45_EED:KLGB:RW12_MCKYE:MOUSS		4E (+-250/+125)	N33° 43' 09.00"	W117° 32' 45.00"	5439.63	false	P	1000.0		6640	6639.63	11-Apr-2016 12:29:09
MOUSS	GOOFY	TerrainPt_9_EED:KLGB:RW12_MOUSS:GOOFY		4E (+-250/+125)	N33° 43' 57.00"	W117° 41' 57.00"	1774.93	true	P	2000.0		3975	3974.93	11-Apr-2016 12:29:09
GOOFY	MIDDS	06-028353	AIRNAV 2	1A (+-20/+3)	N33° 41' 35.31"	W117° 52' 56.80"	323.0	true	P	2000.0		2323	2323.0	11-Apr-2016 12:17:16

## EMLLD:KLGB:RW25R,RW30 Criteria Failures

No failures.

## Route Evaluation for FEYLA:KLGB:RW12

### FEYLA:KLGB:RW12 Evaluation Results Part 1/2

Leg Tp	End Pt	Turn Tp	Alt Restr	Alt Restr 2	Spd Restr	Turn Ang	Leg Length	Min Seg Length
IF	FEYLA						0.0	0.0
TF	LRSON	FLY_BY	+28000.0			0.64	29.59	1.0
TF	GITRR	FLY_BY	+25000.0		280.0	7.31	16.51	1.0
TF	DUJNN	FLY_BY	+20000.0			5.02	14.57	1.0
TF	CARZZ	FLY_BY	+16000.0			0.13	13.9	1.0
TF	AASPN	FLY_BY	+14000.0	-15000.0		12.67	5.67	2.78
TF	KADYN	FLY_BY	-13000.0			6.89	6.73	2.78
TF	EROCK	FLY_BY	+12000.0			25.35	11.49	2.53
TF	LUQAS	FLY_BY	-11000.0			0.43	5.71	2.53
TF	DSNEE	FLY_BY	8000.0		220.0	20.23	10.77	1.47
TF	MCKYE	FLY_BY	+7800.0			0.55	7.62	1.47
TF	MOUSS	FLY_BY	+6700.0			0.18	4.36	1.0
TF	GOOFY	FLY_BY	4000.0			0.12	9.47	1.0
TF	MIDDS	FLY_BY	4000.0			20.31	4.0	1.27
TF	LUVCI	FLY_BY				12.78	6.27	2.54
TF	QGATE	FLY_BY	+3000.0			62.38	8.83	2.9
TF	BREKE	FLY_BY	3000.0				3.34	1.63

## FEYLA:KLGB:RW12 Evaluation Results Part 2/2

Leg Tp	End Pt	Turn Tp	DTA1	DTA1 Turn Rad	DTA1 Turn Alt	DTA1 Turn Spd	DTA1 Bank Ang	DTA1 Tailwind	DTA1 True Airspd	DTA1 vGround	DTA2	DTA2 Turn Rad	DTA2 Turn Alt	DTA2 Turn Spd	DTA2 Bank Ang	DTA2 Tailwind	DTA2 True Airspd	DTA2 vGround
IF	FEYLA				0.0	0.0							0.0	0.0				
TF	LRSON	FLY_BY	0.0		36524.26	300.0	0.0	119.0	574.0	570.0	0.3	54.11	29127.09	300.0	5.0	105.0	498.0	570.0
TF	GITRR	FLY_BY	0.3	54.11	29127.09	300.0	5.0	105.0	498.0	570.0	3.06	47.85	25000.0	280.0	5.0	96.0	431.0	536.0
TF	DUJUNN	FLY_BY	3.06	47.85	25000.0	280.0	5.0	96.0	431.0	536.0	1.73	39.34	20000.0	280.0	5.0	87.0	395.0	486.0
TF	CARZZ	FLY_BY	1.73	39.34	20000.0	280.0	5.0	87.0	395.0	486.0	0.19	168.3	16100.34	280.0	1.0	79.0	370.0	449.0
TF	AASPN	FLY_BY	0.19	168.3	16100.34	280.0	1.0	79.0	370.0	449.0	2.78	25.07	14682.29	280.0	6.33	76.0	361.0	437.0
TF	KADYN	FLY_BY	2.78	25.07	14682.29	280.0	6.33	76.0	361.0	437.0	2.62	43.54	13000.0	280.0	3.44	73.0	351.0	424.0
TF	EROCK	FLY_BY	2.62	43.54	13000.0	280.0	3.44	73.0	351.0	424.0	2.53	11.27	12120.32	280.0	12.67	71.0	346.0	417.0
TF	LUQAS	FLY_BY	2.53	11.27	12120.32	280.0	12.67	71.0	346.0	417.0	0.52	138.29	10691.98	280.0	1.0	68.0	339.0	407.0
TF	DSNEE	FLY_BY	0.52	138.29	10691.98	280.0	1.0	68.0	339.0	407.0	1.47	8.26	8000.0	220.0	10.11	63.0	255.0	318.0
TF	MCKYE	FLY_BY	1.47	8.26	8000.0	220.0	10.11	63.0	255.0	318.0	0.4	83.36	7800.0	220.0	1.0	62.0	254.0	316.0
TF	MOUSS	FLY_BY	0.4	83.36	7800.0	220.0	1.0	62.0	254.0	316.0	0.13	80.23	6700.0	220.0	1.0	60.0	250.0	310.0
TF	GOOFY	FLY_BY	0.13	80.23	6700.0	220.0	1.0	60.0	250.0	310.0	0.07	72.65	4000.0	220.0	1.0	55.0	240.0	295.0
TF	MIDDS	FLY_BY	0.07	72.65	4000.0	220.0	1.0	55.0	240.0	295.0	1.27	7.08	4000.0	220.0	10.16	55.0	240.0	295.0
TF	LUVCI	FLY_BY	1.27	7.08	4000.0	220.0	10.16	55.0	240.0	295.0	1.27	11.32	4000.0	220.0	6.39	55.0	240.0	295.0
TF	QGATE	FLY_BY	1.27	11.32	4000.0	220.0	6.39	55.0	240.0	295.0	1.63	2.7	3835.01	220.0	25.0	55.0	239.0	294.0
TF	BREKE	FLY_BY	1.63	2.7	3835.01	220.0	25.0	55.0	239.0	294.0	0.0		3000.0	220.0	0.0	53.0	236.0	289.0

DSNEE RNAV

## FEYLA:KLGB:RW12 Obstacle Evaluation

Start Pt	End Pt	Name	Source	AC (H/V) (ft) AMSL)	Lat	Long	Height (ft) AMSL	Mnts Area	Pri/Sec Area	ROC (ft)	WCVH (ft)	MOCA (ft)	Min OCS Alt (ft)	Date
FEYLA	LRSON	TerrainPt_0_FEYLA:KLGB:RW12_FEYLA:LRSON		4E (+-250/+125)	N34° 52' 21.00"	W116° 20' 12.00"	4599.74	true	P	2000.0		6800	6799.74	11-Apr-2016 12:29:10
LRSON	GITRR	TerrainPt_27_FEYLA:KLGB:RW12_LRSON:GITRR		4E (+-250/+125)	N34° 40' 33.00"	W116° 35' 21.00"	4904.86	true	P	2000.0		7105	7104.86	11-Apr-2016 12:29:10
GITRR	DUUNN	TerrainPt_20_FEYLA:KLGB:RW12_GITRR:DUUNN		4E (+-250/+125)	N34° 38' 33.00"	W116° 37' 45.00"	5987.53	true	P	2000.0		8188	8187.53	11-Apr-2016 12:29:10
DUUNN	CARZZ	TerrainPt_12_FEYLA:KLGB:RW12_DUUNN:CARZZ		4E (+-250/+125)	N34° 17' 27.00"	W116° 56' 45.00"	8382.55	true	P	2000.0		10583	10582.55	11-Apr-2016 12:29:10
CARZZ	AASPN	TerrainPt_0_FEYLA:KLGB:RW12_CARZZ:AASPN		4E (+-250/+125)	N34° 15' 21.00"	W117° 00' 30.00"	8520.34	true	P	2000.0		10721	10720.34	11-Apr-2016 12:29:10
AASPN	KADYN	TerrainPt_22_FEYLA:KLGB:RW12_AASPN:KADYN		4E (+-250/+125)	N34° 15' 21.00"	W117° 00' 30.00"	8520.34	true	P	2000.0		10721	10720.34	11-Apr-2016 12:29:10
KADYN	EROCK	TerrainPt_46_FEYLA:KLGB:RW12_KADYN:EROCK		4E (+-250/+125)	N34° 11' 21.00"	W117° 03' 24.00"	6771.65	true	P	2000.0		8972	8971.65	11-Apr-2016 12:29:10
EROCK	LUQAS	TerrainPt_14_FEYLA:KLGB:RW12_EROCK:LUQAS		4E (+-250/+125)	N33° 59' 18.00"	W117° 14' 48.00"	3087.27	true	P	2000.0		5288	5287.27	11-Apr-2016 12:29:10
LUQAS	DSNEE	TerrainPt_2_FEYLA:KLGB:RW12_LUQAS:DSNEE		4E (+-250/+125)	N33° 57' 39.00"	W117° 16' 51.00"	3080.71	true	P	2000.0		5281	5280.71	11-Apr-2016 12:29:10
DSNEE	MCKYE	TerrainPt_31_EED:KLGB:RW12_DSNEE:MCKYE		4E (+-250/+125)	N33° 43' 09.00"	W117° 32' 39.00"	5501.97	true	P	2000.0		7702	7701.97	11-Apr-2016 12:29:09
MCKYE	MOUSS	TerrainPt_45_EED:KLGB:RW12_MCKYE:MOUSS		4E (+-250/+125)	N33° 43' 09.00"	W117° 32' 45.00"	5439.63	false	P	1000.0		6640	6639.63	11-Apr-2016 12:29:09
MOUSS	GOOFY	TerrainPt_9_EED:KLGB:RW12_MOUSS:GOOFY		4E (+-250/+125)	N33° 43' 57.00"	W117° 41' 57.00"	1774.93	true	P	2000.0		3975	3974.93	11-Apr-2016 12:29:09
GOOFY	MIDDS	06-028353	AIRNAV 2	1A (+-20/+3)	N33° 41' 35.31"	W117° 52' 56.80"	323.0	true	P	2000.0		2323	2323.0	11-Apr-2016 12:17:16
MIDDS	LUVCI	TerrainPt_14_EED:KLGB:RW12_MIDDS:LUVCI		4E (+-250/+125)	N33° 40' 57.00"	W118° 00' 21.00"	131.23	true	P	2000.0		2332	2331.23	11-Apr-2016 12:29:09
LUVCI	QGATE	TerrainPt_2_EED:KLGB:RW12_LUVCI:QGATE		4E (+-250/+125)	N33° 42' 27.00"	W118° 02' 45.00"	75.46	true	P	2000.0		2276	2275.46	11-Apr-2016 12:29:09
QGATE	BREKE	06-022791	AIRNAV 2	7E (+-3038/+125)	N33° 43' 32.45"	W118° 15' 32.69"	420.0	true	P	2000.0		2420	2420.0	11-Apr-2016 12:16:39

## FEYLA:KLGB:RW12 Criteria Failures

No failures.

## Route Evaluation for FEYLA:KLGB:RW25R,RW30

### FEYLA:KLGB:RW25R,RW30 Evaluation Results Part 1/2

Leg Tp	End Pt	Turn Tp	Alt Restr	Alt Restr 2	Spd Restr	Turn Ang	Leg Length	Min Seg Length
IF	FEYLA						0.0	0.0
TF	LRSON	FLY_BY	+28000.0			0.64	29.59	1.0
TF	GITRR	FLY_BY	+25000.0		280.0	7.31	16.51	1.0
TF	DUUNN	FLY_BY	+20000.0			5.02	14.57	1.0
TF	CARZZ	FLY_BY	+16000.0			0.13	13.9	1.0
TF	AASPN	FLY_BY	+14000.0	-15000.0		12.67	5.67	2.78
TF	KADYN	FLY_BY	-13000.0			6.89	6.73	2.78
TF	EROCK	FLY_BY	+12000.0			25.35	11.49	2.53
TF	LUQAS	FLY_BY	-11000.0			0.43	5.71	2.53
TF	DSNEE	FLY_BY	8000.0		220.0	20.23	10.77	1.47
TF	MCKYE	FLY_BY	+7800.0			0.55	7.62	1.47
TF	MOUSS	FLY_BY	+6700.0			0.18	4.36	1.0
TF	GOOFY	FLY_BY	4000.0			0.12	9.47	1.0
TF	MIDDS	FLY_BY	4000.0			38.63	4.0	1.27

### FEYLA:KLGB:RW25R,RW30 Evaluation Results Part 2/2

Leg Tp	End Pt	Turn Tp	DTA1	DTA1 Turn Rad	DTA1 Turn Alt	DTA1 Turn Spd	DTA1 Bank Ang	DTA1 Tailwind	DTA1 True Airspd	DTA1 vGround	DTA2	DTA2 Turn Rad	DTA2 Turn Alt	DTA2 Turn Spd	DTA2 Bank Ang	DTA2 Tailwind	DTA2 True Airspd	DTA2 vGround
IF	FEYLA				0.0	0.0							0.0	0.0				
TF	LRSON	FLY_BY	0.0		36524.26	300.0	0.0	119.0	574.0	570.0	0.3	54.11	29127.09	300.0	5.0	105.0	498.0	570.0
TF	GITRR	FLY_BY	0.3	54.11	29127.09	300.0	5.0	105.0	498.0	570.0	3.06	47.85	25000.0	280.0	5.0	96.0	431.0	536.0
TF	DUUNN	FLY_BY	3.06	47.85	25000.0	280.0	5.0	96.0	431.0	536.0	1.73	39.34	20000.0	280.0	5.0	87.0	395.0	486.0
TF	CARZZ	FLY_BY	1.73	39.34	20000.0	280.0	5.0	87.0	395.0	486.0	0.19	168.3	16100.34	280.0	1.0	79.0	370.0	449.0
TF	AASPN	FLY_BY	0.19	168.3	16100.34	280.0	1.0	79.0	370.0	449.0	2.78	25.07	14682.29	280.0	6.33	76.0	361.0	437.0
TF	KADYN	FLY_BY	2.78	25.07	14682.29	280.0	6.33	76.0	361.0	437.0	2.62	43.54	13000.0	280.0	3.44	73.0	351.0	424.0
TF	EROCK	FLY_BY	2.62	43.54	13000.0	280.0	3.44	73.0	351.0	424.0	2.53	11.27	12120.32	280.0	12.67	71.0	346.0	417.0
TF	LUQAS	FLY_BY	2.53	11.27	12120.32	280.0	12.67	71.0	346.0	417.0	0.52	138.29	10691.98	280.0	1.0	68.0	339.0	407.0
TF	DSNEE	FLY_BY	0.52	138.29	10691.98	280.0	1.0	68.0	339.0	407.0	1.47	8.26	8000.0	220.0	10.11	63.0	255.0	318.0
TF	MCKYE	FLY_BY	1.47	8.26	8000.0	220.0	10.11	63.0	255.0	318.0	0.4	83.36	7800.0	220.0	1.0	62.0	254.0	316.0
TF	MOUSS	FLY_BY	0.4	83.36	7800.0	220.0	1.0	62.0	254.0	316.0	0.13	80.23	6700.0	220.0	1.0	60.0	250.0	310.0
TF	GOOFY	FLY_BY	0.13	80.23	6700.0	220.0	1.0	60.0	250.0	310.0	0.07	72.65	4000.0	220.0	1.0	55.0	240.0	295.0
TF	MIDDS	FLY_BY	0.07	72.65	4000.0	220.0	1.0	55.0	240.0	295.0	1.27	3.62	4000.0	220.0	19.32	55.0	240.0	295.0

DSNEE RNAV

## FEYLA:KLGB:RW25R,RW30 Obstacle Evaluation

Start Pt	End Pt	Name	Source	AC (H/V (ft) AMSL)	Lat	Long	Height (ft) AMSL	Mnts Area	Pri/Sec Area	ROC (ft)	WCVH (ft)	MOCA (ft)	Min OCS Alt (ft)	Date
FEYLA	LRSON	TerrainPt_0_FEYLA:KLGB:RW12_FEYLA:LRSON		4E (+-250/+125)	N34° 52' 21.00"	W116° 20' 12.00"	4599.74	true	P	2000.0		6800	6799.74	11-Apr-2016 12:29:10
LRSON	GITRR	TerrainPt_27_FEYLA:KLGB:RW12_LRSON:GITRR		4E (+-250/+125)	N34° 40' 33.00"	W116° 35' 21.00"	4904.86	true	P	2000.0		7105	7104.86	11-Apr-2016 12:29:10
GITRR	DUUNN	TerrainPt_20_FEYLA:KLGB:RW12_GITRR:DUUNN		4E (+-250/+125)	N34° 38' 33.00"	W116° 37' 45.00"	5987.53	true	P	2000.0		8188	8187.53	11-Apr-2016 12:29:10
DUUNN	CARZZ	TerrainPt_12_FEYLA:KLGB:RW12_DUUNN:CARZZ		4E (+-250/+125)	N34° 17' 27.00"	W116° 56' 45.00"	8382.55	true	P	2000.0		10583	10582.55	11-Apr-2016 12:29:10
CARZZ	AASPN	TerrainPt_0_FEYLA:KLGB:RW12_CARZZ:AASPN		4E (+-250/+125)	N34° 15' 21.00"	W117° 00' 30.00"	8520.34	true	P	2000.0		10721	10720.34	11-Apr-2016 12:29:10
AASPN	KADYN	TerrainPt_22_FEYLA:KLGB:RW12_AASPN:KADYN		4E (+-250/+125)	N34° 15' 21.00"	W117° 00' 30.00"	8520.34	true	P	2000.0		10721	10720.34	11-Apr-2016 12:29:10
KADYN	EROCK	TerrainPt_46_FEYLA:KLGB:RW12_KADYN:EROCK		4E (+-250/+125)	N34° 11' 21.00"	W117° 03' 24.00"	6771.65	true	P	2000.0		8972	8971.65	11-Apr-2016 12:29:10
EROCK	LUQAS	TerrainPt_14_FEYLA:KLGB:RW12_EROCK:LUQAS		4E (+-250/+125)	N33° 59' 18.00"	W117° 14' 48.00"	3087.27	true	P	2000.0		5288	5287.27	11-Apr-2016 12:29:10
LUQAS	DSNEE	TerrainPt_2_FEYLA:KLGB:RW12_LUQAS:DSNEE		4E (+-250/+125)	N33° 57' 39.00"	W117° 16' 51.00"	3080.71	true	P	2000.0		5281	5280.71	11-Apr-2016 12:29:10
DSNEE	MCKYE	TerrainPt_31_EED:KLGB:RW12_DSNEE:MCKYE		4E (+-250/+125)	N33° 43' 09.00"	W117° 32' 39.00"	5501.97	true	P	2000.0		7702	7701.97	11-Apr-2016 12:29:09
MCKYE	MOUSS	TerrainPt_45_EED:KLGB:RW12_MCKYE:MOUSS		4E (+-250/+125)	N33° 43' 09.00"	W117° 32' 45.00"	5439.63	false	P	1000.0		6640	6639.63	11-Apr-2016 12:29:09
MOUSS	GOOFY	TerrainPt_9_EED:KLGB:RW12_MOUSS:GOOFY		4E (+-250/+125)	N33° 43' 57.00"	W117° 41' 57.00"	1774.93	true	P	2000.0		3975	3974.93	11-Apr-2016 12:29:09
GOOFY	MIDDS	06-028353	AIRNAV 2	1A (+-20/+3)	N33° 41' 35.31"	W117° 52' 56.80"	323.0	true	P	2000.0		2323	2323.0	11-Apr-2016 12:17:16

## FEYLA:KLGB:RW25R,RW30 Criteria Failures

No failures.

## Route Evaluation for HIMDU:KLGB:RW12

### HIMDU:KLGB:RW12 Evaluation Results Part 1/2

Leg Tp	End Pt	Turn Tp	Alt Restr	Alt Restr 2	Spd Restr	Turn Ang	Leg Length	Min Seg Length
IF	HIMDU						0.0	0.0
TF	WEELL	FLY_BY				0.17	15.1	1.0
TF	WURMO	FLY_BY				0.44	19.66	1.0
TF	THERS	FLY_BY				0.54	13.64	1.0
TF	FOVOL	FLY_BY				5.83	32.1	1.0
TF	DRTHI	FLY_BY				1.39	31.67	1.0
TF	YELLA	FLY_BY	+24000.0		280.0	0.11	6.43	1.0
TF	BRCKK	FLY_BY	+21000.0			0.24	10.82	1.0
TF	ROADE	FLY_BY	+17000.0	-19000.0		1.46	10.73	1.0
TF	PHIYA	FLY_BY	-13000.0			0.0	11.31	1.0
TF	DSNEE	FLY_BY	8000.0		220.0	12.34	23.48	1.47
TF	MCKYE	FLY_BY	+7800.0			0.55	7.62	1.47
TF	MOUSS	FLY_BY	+6700.0			0.18	4.36	1.0
TF	GOOFY	FLY_BY	4000.0			0.12	9.47	1.0
TF	MIDDS	FLY_BY	4000.0			20.31	4.0	1.27
TF	LUVCI	FLY_BY				12.78	6.27	2.54
TF	QGATE	FLY_BY	+3000.0			62.38	8.83	2.9
TF	BREKE	FLY_BY	3000.0				3.34	1.63

DSNEE RNAV



## HIMDU:KLGB:RW12 Evaluation Results Part 2/2

Leg Tp	End Pt	Turn Tp	DTA1	DTA1 Turn Rad	DTA1 Turn Alt	DTA1 Turn Spd	DTA1 Bank Ang	DTA1 Tailwind	DTA1 True Airspd	DTA1 vGround	DTA2	DTA2 Turn Rad	DTA2 Turn Alt	DTA2 Turn Spd	DTA2 Bank Ang	DTA2 Tailwind	DTA2 True Airspd	DTA2 vGround
IF	HIMDU				0.0	0.0							0.0	0.0				
TF	WEELL	FLY_BY	0.0		41000.0	300.0	0.0	128.0	629.0	570.0	0.08	54.11	41000.0	300.0	5.0	128.0	629.0	570.0
TF	WURMO	FLY_BY	0.08	54.11	41000.0	300.0	5.0	128.0	629.0	570.0	0.21	54.11	41000.0	300.0	5.0	128.0	629.0	570.0
TF	THERS	FLY_BY	0.21	54.11	41000.0	300.0	5.0	128.0	629.0	570.0	0.25	54.11	41000.0	300.0	5.0	128.0	629.0	570.0
TF	FOVOL	FLY_BY	0.25	54.11	41000.0	300.0	5.0	128.0	629.0	570.0	2.75	54.11	33525.36	300.0	5.0	113.0	541.0	570.0
TF	DRTHI	FLY_BY	2.75	54.11	33525.36	300.0	5.0	113.0	541.0	570.0	0.59	48.93	25606.82	300.0	5.0	98.0	467.0	542.0
TF	YELLA	FLY_BY	0.59	48.93	25606.82	300.0	5.0	98.0	467.0	542.0	0.04	46.08	24000.0	280.0	5.0	95.0	424.0	526.0
TF	BRCKK	FLY_BY	0.04	46.08	24000.0	280.0	5.0	95.0	424.0	526.0	0.09	40.98	21000.0	280.0	5.0	89.0	402.0	496.0
TF	ROADE	FLY_BY	0.09	40.98	21000.0	280.0	5.0	89.0	402.0	496.0	2.21	173.59	17000.0	280.0	1.0	81.0	375.0	456.0
TF	PHIYA	FLY_BY	2.21	173.59	17000.0	280.0	1.0	81.0	375.0	456.0	0.0		13000.0	280.0	0.0	73.0	351.0	424.0
TF	DSNEE	FLY_BY	0.0		13000.0	280.0	0.0	73.0	351.0	424.0	1.47	13.63	8000.0	220.0	6.17	63.0	255.0	318.0
TF	MCKYE	FLY_BY	1.47	13.63	8000.0	220.0	6.17	63.0	255.0	318.0	0.4	83.36	7800.0	220.0	1.0	62.0	254.0	316.0
TF	MOUSS	FLY_BY	0.4	83.36	7800.0	220.0	1.0	62.0	254.0	316.0	0.13	80.23	6700.0	220.0	1.0	60.0	250.0	310.0
TF	GOOFY	FLY_BY	0.13	80.23	6700.0	220.0	1.0	60.0	250.0	310.0	0.07	72.65	4000.0	220.0	1.0	55.0	240.0	295.0
TF	MIDDS	FLY_BY	0.07	72.65	4000.0	220.0	1.0	55.0	240.0	295.0	1.27	7.08	4000.0	220.0	10.16	55.0	240.0	295.0
TF	LUVCI	FLY_BY	1.27	7.08	4000.0	220.0	10.16	55.0	240.0	295.0	1.27	11.32	4000.0	220.0	6.39	55.0	240.0	295.0
TF	QGATE	FLY_BY	1.27	11.32	4000.0	220.0	6.39	55.0	240.0	295.0	1.63	2.7	3835.01	220.0	25.0	55.0	239.0	294.0
TF	BREKE	FLY_BY	1.63	2.7	3835.01	220.0	25.0	55.0	239.0	294.0	0.0		3000.0	220.0	0.0	53.0	236.0	289.0

DSNEE RNAV

## HIMDU:KLGB:RW12 Obstacle Evaluation

Start Pt	End Pt	Name	Source	AC (H/V (ft) AMSL)	Lat	Long	Height (ft) AMSL	Mnts Area	Pri/Sec Area	ROC (ft)	WCVH (ft)	MOCA (ft)	Min OCS Alt (ft)	Date
HIMDU	WEELL	TerrainPt_37_HIMDU:KLGB:RW12_HIMDU:WEELL		4E (+-250/+125)	N34° 18' 06.00"	W114° 17' 12.00"	3001.97	true	P	2000.0		5202	5201.97	11-Apr-2016 12:29:11
WEELL	WURMO	TerrainPt_0_HIMDU:KLGB:RW12_WEELL:WURMO		4E (+-250/+125)	N34° 18' 51.00"	W114° 24' 42.00"	4120.73	true	P	2000.0		6321	6320.73	11-Apr-2016 12:29:11
WURMO	THERS	TerrainPt_1_HIMDU:KLGB:RW12_WURMO:THERS		4E (+-250/+125)	N34° 15' 39.00"	W114° 49' 39.00"	4304.46	true	P	2000.0		6505	6504.46	11-Apr-2016 12:29:11
THERS	FOVOL	TerrainPt_36_HIMDU:KLGB:RW12_THERS:FOVOL		4E (+-250/+125)	N34° 01' 48.00"	W115° 24' 06.00"	4396.33	true	P	2000.0		6597	6596.33	11-Apr-2016 12:29:11
FOVOL	DRTHI	TerrainPt_0_EED:KLGB:RW12_FOVOL:DRTHI		4E (+-250/+125)	N34° 00' 24.00"	W116° 14' 30.00"	5820.21	true	P	2000.0		8021	8020.21	11-Apr-2016 12:29:09
DRTHI	YELLA	TerrainPt_0_EED:KLGB:RW12_DRTHI:YELLA		4E (+-250/+125)	N34° 00' 24.00"	W116° 14' 30.00"	5820.21	true	P	2000.0		8021	8020.21	11-Apr-2016 12:29:09
YELLA	BRCKK	TerrainPt_14_EED:KLGB:RW12_YELLA:BRCKK		4E (+-250/+125)	N34° 00' 57.00"	W116° 19' 39.00"	5249.34	true	P	2000.0		7450	7449.34	11-Apr-2016 12:29:09
BRCKK	ROADE	OBS-4001-IPDS	AIRNAV 2	6C (+-1000/+20)	N33° 48' 54.00"	W116° 40' 48.00"	11034.0	true	S	1167.98		12202	12201.98	11-Apr-2016 12:16:42
ROADE	PHIYA	TerrainPt_27_EED:KLGB:RW12_ROADE:PHIYA		4E (+-250/+125)	N33° 50' 06.00"	W116° 43' 39.00"	8421.92	true	P	2000.0		10622	10621.92	11-Apr-2016 12:29:09
PHIYA	DSNEE	TerrainPt_30_EED:KLGB:RW12_PHIYA:DSNEE		4E (+-250/+125)	N33° 49' 24.00"	W116° 56' 27.00"	3887.8	true	P	2000.0		6088	6087.8	11-Apr-2016 12:29:09
DSNEE	MCKYE	TerrainPt_31_EED:KLGB:RW12_DSNEE:MCKYE		4E (+-250/+125)	N33° 43' 09.00"	W117° 32' 39.00"	5501.97	true	P	2000.0		7702	7701.97	11-Apr-2016 12:29:09
MCKYE	MOUSS	TerrainPt_45_EED:KLGB:RW12_MCKYE:MOUSS		4E (+-250/+125)	N33° 43' 09.00"	W117° 32' 45.00"	5439.63	false	P	1000.0		6640	6639.63	11-Apr-2016 12:29:09
MOUSS	GOOFY	TerrainPt_9_EED:KLGB:RW12_MOUSS:GOOFY		4E (+-250/+125)	N33° 43' 57.00"	W117° 41' 57.00"	1774.93	true	P	2000.0		3975	3974.93	11-Apr-2016 12:29:09
GOOFY	MIDDS	06-028353	AIRNAV 2	1A (+-20/+3)	N33° 41' 35.31"	W117° 52' 56.80"	323.0	true	P	2000.0		2323	2323.0	11-Apr-2016 12:17:16
MIDDS	LUVCI	TerrainPt_14_EED:KLGB:RW12_MIDDS:LUVCI		4E (+-250/+125)	N33° 40' 57.00"	W118° 00' 21.00"	131.23	true	P	2000.0		2332	2331.23	11-Apr-2016 12:29:09
LUVCI	QGATE	TerrainPt_2_EED:KLGB:RW12_LUVCI:QGATE		4E (+-250/+125)	N33° 42' 27.00"	W118° 02' 45.00"	75.46	true	P	2000.0		2276	2275.46	11-Apr-2016 12:29:09
QGATE	BREKE	06-022791	AIRNAV 2	7E (+-3038/+125)	N33° 43' 32.45"	W118° 15' 32.69"	420.0	true	P	2000.0		2420	2420.0	11-Apr-2016 12:16:39

## HIMDU:KLGB:RW12 Criteria Failures

No failures.

## Route Evaluation for HIMDU:KLGB:RW25R,RW30

### HIMDU:KLGB:RW25R,RW30 Evaluation Results Part 1/2

Leg Tp	End Pt	Turn Tp	Alt Restr	Alt Restr 2	Spd Restr	Turn Ang	Leg Length	Min Seg Length
IF	HIMDU						0.0	0.0
TF	WEELL	FLY_BY				0.17	15.1	1.0
TF	WURMO	FLY_BY				0.44	19.66	1.0
TF	THERS	FLY_BY				0.54	13.64	1.0
TF	FOVOL	FLY_BY				5.83	32.1	1.0
TF	DRTHI	FLY_BY				1.39	31.67	1.0
TF	YELLA	FLY_BY	+24000.0		280.0	0.11	6.43	1.0
TF	BRCKK	FLY_BY	+21000.0			0.24	10.82	1.0
TF	ROADE	FLY_BY	+17000.0	-19000.0		1.46	10.73	1.0
TF	PHIYA	FLY_BY	-13000.0			0.0	11.31	1.0
TF	DSNEE	FLY_BY	8000.0		220.0	12.34	23.48	1.47
TF	MCKYE	FLY_BY	+7800.0			0.55	7.62	1.47
TF	MOUSS	FLY_BY	+6700.0			0.18	4.36	1.0
TF	GOOFY	FLY_BY	4000.0			0.12	9.47	1.0
TF	MIDDS	FLY_BY	4000.0			38.63	4.0	1.27

## HIMDU:KLGB:RW25R,RW30 Evaluation Results Part 2/2

Leg Tp	End Pt	Turn Tp	DTA1	DTA1 Turn Rad	DTA1 Turn Alt	DTA1 Turn Spd	DTA1 Bank Ang	DTA1 Tailwind	DTA1 True Airspd	DTA1 vGround	DTA2	DTA2 Turn Rad	DTA2 Turn Alt	DTA2 Turn Spd	DTA2 Bank Ang	DTA2 Tailwind	DTA2 True Airspd	DTA2 vGround
IF	HIMDU				0.0	0.0							0.0	0.0				
TF	WEELL	FLY_BY	0.0		41000.0	300.0	0.0	128.0	629.0	570.0	0.08	54.11	41000.0	300.0	5.0	128.0	629.0	570.0
TF	WURMO	FLY_BY	0.08	54.11	41000.0	300.0	5.0	128.0	629.0	570.0	0.21	54.11	41000.0	300.0	5.0	128.0	629.0	570.0
TF	THERS	FLY_BY	0.21	54.11	41000.0	300.0	5.0	128.0	629.0	570.0	0.25	54.11	41000.0	300.0	5.0	128.0	629.0	570.0
TF	FOVOL	FLY_BY	0.25	54.11	41000.0	300.0	5.0	128.0	629.0	570.0	2.75	54.11	33525.36	300.0	5.0	113.0	541.0	570.0
TF	DRTHI	FLY_BY	2.75	54.11	33525.36	300.0	5.0	113.0	541.0	570.0	0.59	48.93	25606.82	300.0	5.0	98.0	467.0	542.0
TF	YELLA	FLY_BY	0.59	48.93	25606.82	300.0	5.0	98.0	467.0	542.0	0.04	46.08	24000.0	280.0	5.0	95.0	424.0	526.0
TF	BRCKK	FLY_BY	0.04	46.08	24000.0	280.0	5.0	95.0	424.0	526.0	0.09	40.98	21000.0	280.0	5.0	89.0	402.0	496.0
TF	ROADE	FLY_BY	0.09	40.98	21000.0	280.0	5.0	89.0	402.0	496.0	2.21	173.59	17000.0	280.0	1.0	81.0	375.0	456.0
TF	PHIYA	FLY_BY	2.21	173.59	17000.0	280.0	1.0	81.0	375.0	456.0	0.0		13000.0	280.0	0.0	73.0	351.0	424.0
TF	DSNEE	FLY_BY	0.0		13000.0	280.0	0.0	73.0	351.0	424.0	1.47	13.63	8000.0	220.0	6.17	63.0	255.0	318.0
TF	MCKYE	FLY_BY	1.47	13.63	8000.0	220.0	6.17	63.0	255.0	318.0	0.4	83.36	7800.0	220.0	1.0	62.0	254.0	316.0
TF	MOUSS	FLY_BY	0.4	83.36	7800.0	220.0	1.0	62.0	254.0	316.0	0.13	80.23	6700.0	220.0	1.0	60.0	250.0	310.0
TF	GOOFY	FLY_BY	0.13	80.23	6700.0	220.0	1.0	60.0	250.0	310.0	0.07	72.65	4000.0	220.0	1.0	55.0	240.0	295.0
TF	MIDDS	FLY_BY	0.07	72.65	4000.0	220.0	1.0	55.0	240.0	295.0	1.27	3.62	4000.0	220.0	19.32	55.0	240.0	295.0

DSNEE RNAV

## HIMDU:KLGB:RW25R,RW30 Obstacle Evaluation

Start Pt	End Pt	Name	Source	AC (H/V) (ft) AMSL)	Lat	Long	Height (ft) AMSL	Mnts Area	Pri/Sec Area	ROC (ft)	WCVH (ft)	MOCA (ft)	Min OCS Alt (ft)	Date
HIMDU	WEELL	TerrainPt_37_HIMDU:KLGB:RW12_HIMDU:WEELL		4E (+-250/+125)	N34° 18' 06.00"	W114° 17' 12.00"	3001.97	true	P	2000.0		5202	5201.97	11-Apr-2016 12:29:11
WEELL	WURMO	TerrainPt_0_HIMDU:KLGB:RW12_WEELL:WURMO		4E (+-250/+125)	N34° 18' 51.00"	W114° 24' 42.00"	4120.73	true	P	2000.0		6321	6320.73	11-Apr-2016 12:29:11
WURMO	THERS	TerrainPt_1_HIMDU:KLGB:RW12_WURMO:THERS		4E (+-250/+125)	N34° 15' 39.00"	W114° 49' 39.00"	4304.46	true	P	2000.0		6505	6504.46	11-Apr-2016 12:29:11
THERS	FOVOL	TerrainPt_36_HIMDU:KLGB:RW12_THERS:FOVOL		4E (+-250/+125)	N34° 01' 48.00"	W115° 24' 06.00"	4396.33	true	P	2000.0		6597	6596.33	11-Apr-2016 12:29:11
FOVOL	DRTHI	TerrainPt_38_EED:KLGB:RW12_FOVOL:DRTHI		4E (+-250/+125)	N34° 00' 24.00"	W116° 14' 30.00"	5820.21	true	P	2000.0		8021	8020.21	11-Apr-2016 12:29:09
DRTHI	YELLA	TerrainPt_0_EED:KLGB:RW12_DRTHI:YELLA		4E (+-250/+125)	N34° 00' 24.00"	W116° 14' 30.00"	5820.21	true	P	2000.0		8021	8020.21	11-Apr-2016 12:29:09
YELLA	BRCKK	TerrainPt_14_EED:KLGB:RW12_YELLA:BRCKK		4E (+-250/+125)	N34° 00' 57.00"	W116° 19' 39.00"	5249.34	true	P	2000.0		7450	7449.34	11-Apr-2016 12:29:09
BRCKK	ROADE	OBS-4001-IPDS	AIRNAV 2	6C (+-1000/+20)	N33° 48' 54.00"	W116° 40' 48.00"	11034.0	true	S	1167.98		12202	12201.98	11-Apr-2016 12:16:42
ROADE	PHIYA	TerrainPt_27_EED:KLGB:RW12_ROADE:PHIYA		4E (+-250/+125)	N33° 50' 06.00"	W116° 43' 39.00"	8421.92	true	P	2000.0		10622	10621.92	11-Apr-2016 12:29:09
PHIYA	DSNEE	TerrainPt_30_EED:KLGB:RW12_PHIYA:DSNEE		4E (+-250/+125)	N33° 49' 24.00"	W116° 56' 27.00"	3887.8	true	P	2000.0		6088	6087.8	11-Apr-2016 12:29:09
DSNEE	MCKYE	TerrainPt_31_EED:KLGB:RW12_DSNEE:MCKYE		4E (+-250/+125)	N33° 43' 09.00"	W117° 32' 39.00"	5501.97	true	P	2000.0		7702	7701.97	11-Apr-2016 12:29:09
MCKYE	MOUSS	TerrainPt_45_EED:KLGB:RW12_MCKYE:MOUSS		4E (+-250/+125)	N33° 43' 09.00"	W117° 32' 45.00"	5439.63	false	P	1000.0		6640	6639.63	11-Apr-2016 12:29:09
MOUSS	GOOFY	TerrainPt_9_EED:KLGB:RW12_MOUSS:GOOFY		4E (+-250/+125)	N33° 43' 57.00"	W117° 41' 57.00"	1774.93	true	P	2000.0		3975	3974.93	11-Apr-2016 12:29:09
GOOFY	MIDDS	06-028353	AIRNAV 2	1A (+-20/+3)	N33° 41' 35.31"	W117° 52' 56.80"	323.0	true	P	2000.0		2323	2323.0	11-Apr-2016 12:17:16

## HIMDU:KLGB:RW25R,RW30 Criteria Failures

No failures.

## Route Evaluation for LRSON:KLGB:RW12

### LRSON:KLGB:RW12 Evaluation Results Part 1/2

Leg Tp	End Pt	Turn Tp	Alt Restr	Alt Restr 2	Spd Restr	Turn Ang	Leg Length	Min Seg Length
IF	LRSON		+28000.0				0.0	0.0
TF	GITRR	FLY_BY	+25000.0		280.0	7.31	16.51	1.0
TF	DUUNN	FLY_BY	+20000.0			5.02	14.57	1.0
TF	CARZZ	FLY_BY	+16000.0			0.13	13.9	1.0
TF	AASPN	FLY_BY	+14000.0	-15000.0		12.67	5.67	2.78
TF	KADYN	FLY_BY	-13000.0			6.89	6.73	2.78
TF	EROCK	FLY_BY	+12000.0			25.35	11.49	2.53
TF	LUQAS	FLY_BY	-11000.0			0.43	5.71	2.53
TF	DSNEE	FLY_BY	8000.0		220.0	20.23	10.77	1.47
TF	MCKYE	FLY_BY	+7800.0			0.55	7.62	1.47
TF	MOUSS	FLY_BY	+6700.0			0.18	4.36	1.0
TF	GOOFY	FLY_BY	4000.0			0.12	9.47	1.0
TF	MIDDS	FLY_BY	4000.0			20.31	4.0	1.27
TF	LUVCI	FLY_BY				12.78	6.27	2.54
TF	QGATE	FLY_BY	+3000.0			62.38	8.83	2.9
TF	BREKE	FLY_BY	3000.0				3.34	1.63

## LRSON:KLGB:RW12 Evaluation Results Part 2/2

Leg Tp	End Pt	Turn Tp	DTA1	DTA1 Turn Rad	DTA1 Turn Alt	DTA1 Turn Spd	DTA1 Bank Ang	DTA1 Tailwind	DTA1 True Airspd	DTA1 vGround	DTA2	DTA2 Turn Rad	DTA2 Turn Alt	DTA2 Turn Spd	DTA2 Bank Ang	DTA2 Tailwind	DTA2 True Airspd	DTA2 vGround
IF	LRSON				0.0	0.0							0.0	0.0				
TF	GITRR	FLY_BY	0.0		29127.09	300.0	0.0	105.0	498.0	570.0	3.06	47.85	25000.0	280.0	5.0	96.0	431.0	536.0
TF	DUJNN	FLY_BY	3.06	47.85	25000.0	280.0	5.0	96.0	431.0	536.0	1.73	39.34	20000.0	280.0	5.0	87.0	395.0	486.0
TF	CARZZ	FLY_BY	1.73	39.34	20000.0	280.0	5.0	87.0	395.0	486.0	0.19	168.3	16100.34	280.0	1.0	79.0	370.0	449.0
TF	AASPN	FLY_BY	0.19	168.3	16100.34	280.0	1.0	79.0	370.0	449.0	2.78	25.07	14682.29	280.0	6.33	76.0	361.0	437.0
TF	KADYN	FLY_BY	2.78	25.07	14682.29	280.0	6.33	76.0	361.0	437.0	2.62	43.54	13000.0	280.0	3.44	73.0	351.0	424.0
TF	EROCK	FLY_BY	2.62	43.54	13000.0	280.0	3.44	73.0	351.0	424.0	2.53	11.27	12120.32	280.0	12.67	71.0	346.0	417.0
TF	LUQAS	FLY_BY	2.53	11.27	12120.32	280.0	12.67	71.0	346.0	417.0	0.52	138.29	10691.98	280.0	1.0	68.0	339.0	407.0
TF	DSNEE	FLY_BY	0.52	138.29	10691.98	280.0	1.0	68.0	339.0	407.0	1.47	8.26	8000.0	220.0	10.11	63.0	255.0	318.0
TF	MCKYE	FLY_BY	1.47	8.26	8000.0	220.0	10.11	63.0	255.0	318.0	0.4	83.36	7800.0	220.0	1.0	62.0	254.0	316.0
TF	MOUSS	FLY_BY	0.4	83.36	7800.0	220.0	1.0	62.0	254.0	316.0	0.13	80.23	6700.0	220.0	1.0	60.0	250.0	310.0
TF	GOOFY	FLY_BY	0.13	80.23	6700.0	220.0	1.0	60.0	250.0	310.0	0.07	72.65	4000.0	220.0	1.0	55.0	240.0	295.0
TF	MIDDS	FLY_BY	0.07	72.65	4000.0	220.0	1.0	55.0	240.0	295.0	1.27	7.08	4000.0	220.0	10.16	55.0	240.0	295.0
TF	LUVCI	FLY_BY	1.27	7.08	4000.0	220.0	10.16	55.0	240.0	295.0	1.27	11.32	4000.0	220.0	6.39	55.0	240.0	295.0
TF	QGATE	FLY_BY	1.27	11.32	4000.0	220.0	6.39	55.0	240.0	295.0	1.63	2.7	3835.01	220.0	25.0	55.0	239.0	294.0
TF	BREKE	FLY_BY	1.63	2.7	3835.01	220.0	25.0	55.0	239.0	294.0	0.0		3000.0	220.0	0.0	53.0	236.0	289.0

DSNEE RNAV

## LRSON:KLGB:RW12 Obstacle Evaluation

Start Pt	End Pt	Name	Source	AC (H/V) (ft) AMSL)	Lat	Long	Height (ft) AMSL	Mnts Area	Pri/Sec Area	ROC (ft)	WCVH (ft)	MOCA (ft)	Min OCS Alt (ft)	Date
LRSON	GITRR	TerrainPt_27_FEYLA:KLGB:RW12_LRSON:GITRR		4E (+-250/+125)	N34° 40' 33.00"	W116° 35' 21.00"	4904.86	true	P	2000.0		7105	7104.86	11-Apr-2016 12:29:10
GITRR	DUUNN	TerrainPt_20_FEYLA:KLGB:RW12_GITRR:DUUNN		4E (+-250/+125)	N34° 38' 33.00"	W116° 37' 45.00"	5987.53	true	P	2000.0		8188	8187.53	11-Apr-2016 12:29:10
DUUNN	CARZZ	TerrainPt_12_FEYLA:KLGB:RW12_DUUNN:CARZZ		4E (+-250/+125)	N34° 17' 27.00"	W116° 56' 45.00"	8382.55	true	P	2000.0		10583	10582.55	11-Apr-2016 12:29:10
CARZZ	AASPN	TerrainPt_0_FEYLA:KLGB:RW12_CARZZ:AASPN		4E (+-250/+125)	N34° 15' 21.00"	W117° 00' 30.00"	8520.34	true	P	2000.0		10721	10720.34	11-Apr-2016 12:29:10
AASPN	KADYN	TerrainPt_20_FEYLA:KLGB:RW12_AASPN:KADYN		4E (+-250/+125)	N34° 15' 21.00"	W117° 00' 30.00"	8520.34	true	P	2000.0		10721	10720.34	11-Apr-2016 12:29:10
KADYN	EROCK	TerrainPt_46_FEYLA:KLGB:RW12_KADYN:EROCK		4E (+-250/+125)	N34° 11' 21.00"	W117° 03' 24.00"	6771.65	true	P	2000.0		8972	8971.65	11-Apr-2016 12:29:10
EROCK	LUQAS	TerrainPt_14_FEYLA:KLGB:RW12_EROCK:LUQAS		4E (+-250/+125)	N33° 59' 18.00"	W117° 14' 48.00"	3087.27	true	P	2000.0		5288	5287.27	11-Apr-2016 12:29:10
LUQAS	DSNEE	TerrainPt_2_FEYLA:KLGB:RW12_LUQAS:DSNEE		4E (+-250/+125)	N33° 57' 39.00"	W117° 16' 51.00"	3080.71	true	P	2000.0		5281	5280.71	11-Apr-2016 12:29:10
DSNEE	MCKYE	TerrainPt_31_EED:KLGB:RW12_DSNEE:MCKYE		4E (+-250/+125)	N33° 43' 09.00"	W117° 32' 39.00"	5501.97	true	P	2000.0		7702	7701.97	11-Apr-2016 12:29:09
MCKYE	MOUSS	TerrainPt_45_EED:KLGB:RW12_MCKYE:MOUSS		4E (+-250/+125)	N33° 43' 09.00"	W117° 32' 45.00"	5439.63	false	P	1000.0		6640	6639.63	11-Apr-2016 12:29:09
MOUSS	GOOFY	TerrainPt_9_EED:KLGB:RW12_MOUSS:GOOFY		4E (+-250/+125)	N33° 43' 57.00"	W117° 41' 57.00"	1774.93	true	P	2000.0		3975	3974.93	11-Apr-2016 12:29:09
GOOFY	MIDDS	06-028353	AIRNAV 2	1A (+-20/+3)	N33° 41' 35.31"	W117° 52' 56.80"	323.0	true	P	2000.0		2323	2323.0	11-Apr-2016 12:17:16
MIDDS	LUVCI	TerrainPt_14_EED:KLGB:RW12_MIDDS:LUVCI		4E (+-250/+125)	N33° 40' 57.00"	W118° 00' 21.00"	131.23	true	P	2000.0		2332	2331.23	11-Apr-2016 12:29:09
LUVCI	QGATE	TerrainPt_2_EED:KLGB:RW12_LUVCI:QGATE		4E (+-250/+125)	N33° 42' 27.00"	W118° 02' 45.00"	75.46	true	P	2000.0		2276	2275.46	11-Apr-2016 12:29:09
QGATE	BREKE	06-022791	AIRNAV 2	7E (+-3038/+125)	N33° 43' 32.45"	W118° 15' 32.69"	420.0	true	P	2000.0		2420	2420.0	11-Apr-2016 12:16:39

## LRSON:KLGB:RW12 Criteria Failures

No failures.



## Route Evaluation for LRSON:KLGB:RW25R,RW30

### LRSON:KLGB:RW25R,RW30 Evaluation Results Part 1/2

Leg Tp	End Pt	Turn Tp	Alt Restr	Alt Restr 2	Spd Restr	Turn Ang	Leg Length	Min Seg Length
IF	LRSON		+28000.0				0.0	0.0
TF	GITRR	FLY_BY	+25000.0		280.0	7.31	16.51	1.0
TF	DUUNN	FLY_BY	+20000.0			5.02	14.57	1.0
TF	CARZZ	FLY_BY	+16000.0			0.13	13.9	1.0
TF	AASPN	FLY_BY	+14000.0	-15000.0		12.67	5.67	2.78
TF	KADYN	FLY_BY	-13000.0			6.89	6.73	2.78
TF	EROCK	FLY_BY	+12000.0			25.35	11.49	2.53
TF	LUQAS	FLY_BY	-11000.0			0.43	5.71	2.53
TF	DSNEE	FLY_BY	8000.0		220.0	20.23	10.77	1.47
TF	MCKYE	FLY_BY	+7800.0			0.55	7.62	1.47
TF	MOUSS	FLY_BY	+6700.0			0.18	4.36	1.0
TF	GOOFY	FLY_BY	4000.0			0.12	9.47	1.0
TF	MIDDS	FLY_BY	4000.0			38.63	4.0	1.27

### LRSON:KLGB:RW25R,RW30 Evaluation Results Part 2/2

Leg Tp	End Pt	Turn Tp	DTA1	DTA1 Turn Rad	DTA1 Turn Alt	DTA1 Turn Spd	DTA1 Bank Ang	DTA1 Tailwind	DTA1 True Airspd	DTA1 vGround	DTA2	DTA2 Turn Rad	DTA2 Turn Alt	DTA2 Turn Spd	DTA2 Bank Ang	DTA2 Tailwind	DTA2 True Airspd	DTA2 vGround
IF	LRSON				0.0	0.0							0.0	0.0				
TF	GITRR	FLY_BY	0.0		29127.09	300.0	0.0	105.0	498.0	570.0	3.06	47.85	25000.0	280.0	5.0	96.0	431.0	536.0
TF	DUUNN	FLY_BY	3.06	47.85	25000.0	280.0	5.0	96.0	431.0	536.0	1.73	39.34	20000.0	280.0	5.0	87.0	395.0	486.0
TF	CARZZ	FLY_BY	1.73	39.34	20000.0	280.0	5.0	87.0	395.0	486.0	0.19	168.3	16100.34	280.0	1.0	79.0	370.0	449.0
TF	AASPN	FLY_BY	0.19	168.3	16100.34	280.0	1.0	79.0	370.0	449.0	2.78	25.07	14682.29	280.0	6.33	76.0	361.0	437.0
TF	KADYN	FLY_BY	2.78	25.07	14682.29	280.0	6.33	76.0	361.0	437.0	2.62	43.54	13000.0	280.0	3.44	73.0	351.0	424.0
TF	EROCK	FLY_BY	2.62	43.54	13000.0	280.0	3.44	73.0	351.0	424.0	2.53	11.27	12120.32	280.0	12.67	71.0	346.0	417.0
TF	LUQAS	FLY_BY	2.53	11.27	12120.32	280.0	12.67	71.0	346.0	417.0	0.52	138.29	10691.98	280.0	1.0	68.0	339.0	407.0
TF	DSNEE	FLY_BY	0.52	138.29	10691.98	280.0	1.0	68.0	339.0	407.0	1.47	8.26	8000.0	220.0	10.11	63.0	255.0	318.0
TF	MCKYE	FLY_BY	1.47	8.26	8000.0	220.0	10.11	63.0	255.0	318.0	0.4	83.36	7800.0	220.0	1.0	62.0	254.0	316.0
TF	MOUSS	FLY_BY	0.4	83.36	7800.0	220.0	1.0	62.0	254.0	316.0	0.13	80.23	6700.0	220.0	1.0	60.0	250.0	310.0
TF	GOOFY	FLY_BY	0.13	80.23	6700.0	220.0	1.0	60.0	250.0	310.0	0.07	72.65	4000.0	220.0	1.0	55.0	240.0	295.0
TF	MIDDS	FLY_BY	0.07	72.65	4000.0	220.0	1.0	55.0	240.0	295.0	1.27	3.62	4000.0	220.0	19.32	55.0	240.0	295.0

DSNEE RNAV

## LRSON:KLGB:RW25R,RW30 Obstacle Evaluation

Start Pt	End Pt	Name	Source	AC (H/V (ft) AMSL)	Lat	Long	Height (ft) AMSL	Mnts Area	Pri/Sec Area	ROC (ft)	WCVH (ft)	MOCA (ft)	Min OCS Alt (ft)	Date
LRSON	GITRR	TerrainPt_27_FEYLA:KLGB:RW12_LRSON:GITRR		4E (+-250/+125)	N34° 40' 33.00"	W116° 35' 21.00"	4904.86	true	P	2000.0		7105	7104.86	11-Apr-2016 12:29:10
GITRR	DUUNN	TerrainPt_20_FEYLA:KLGB:RW12_GITRR:DUUNN		4E (+-250/+125)	N34° 38' 33.00"	W116° 37' 45.00"	5987.53	true	P	2000.0		8188	8187.53	11-Apr-2016 12:29:10
DUUNN	CARZZ	TerrainPt_12_FEYLA:KLGB:RW12_DUUNN:CARZZ		4E (+-250/+125)	N34° 17' 27.00"	W116° 56' 45.00"	8382.55	true	P	2000.0		10583	10582.55	11-Apr-2016 12:29:10
CARZZ	AASPN	TerrainPt_0_FEYLA:KLGB:RW12_CARZZ:AASPN		4E (+-250/+125)	N34° 15' 21.00"	W117° 00' 30.00"	8520.34	true	P	2000.0		10721	10720.34	11-Apr-2016 12:29:10
AASPN	KADYN	TerrainPt_22_FEYLA:KLGB:RW12_AASPN:KADYN		4E (+-250/+125)	N34° 15' 21.00"	W117° 00' 30.00"	8520.34	true	P	2000.0		10721	10720.34	11-Apr-2016 12:29:10
KADYN	EROCK	TerrainPt_46_FEYLA:KLGB:RW12_KADYN:EROCK		4E (+-250/+125)	N34° 11' 21.00"	W117° 03' 24.00"	6771.65	true	P	2000.0		8972	8971.65	11-Apr-2016 12:29:10
EROCK	LUQAS	TerrainPt_14_FEYLA:KLGB:RW12_EROCK:LUQAS		4E (+-250/+125)	N33° 59' 18.00"	W117° 14' 48.00"	3087.27	true	P	2000.0		5288	5287.27	11-Apr-2016 12:29:10
LUQAS	DSNEE	TerrainPt_2_FEYLA:KLGB:RW12_LUQAS:DSNEE		4E (+-250/+125)	N33° 57' 39.00"	W117° 16' 51.00"	3080.71	true	P	2000.0		5281	5280.71	11-Apr-2016 12:29:10
DSNEE	MCKYE	TerrainPt_31_EED:KLGB:RW12_DSNEE:MCKYE		4E (+-250/+125)	N33° 43' 09.00"	W117° 32' 39.00"	5501.97	true	P	2000.0		7702	7701.97	11-Apr-2016 12:29:09
MCKYE	MOUSS	TerrainPt_45_EED:KLGB:RW12_MCKYE:MOUSS		4E (+-250/+125)	N33° 43' 09.00"	W117° 32' 45.00"	5439.63	false	P	1000.0		6640	6639.63	11-Apr-2016 12:29:09
MOUSS	GOOFY	TerrainPt_9_EED:KLGB:RW12_MOUSS:GOOFY		4E (+-250/+125)	N33° 43' 57.00"	W117° 41' 57.00"	1774.93	true	P	2000.0		3975	3974.93	11-Apr-2016 12:29:09
GOOFY	MIDDS	06-028353	AIRNAV 2	1A (+-20/+3)	N33° 41' 35.31"	W117° 52' 56.80"	323.0	true	P	2000.0		2323	2323.0	11-Apr-2016 12:17:16

## LRSON:KLGB:RW25R,RW30 Criteria Failures

No failures.

## Route Evaluation for MARUE:KLGB:RW12

### MARUE:KLGB:RW12 Evaluation Results Part 1/2

Leg Tp	End Pt	Turn Tp	Alt Restr	Alt Restr 2	Spd Restr	Turn Ang	Leg Length	Min Seg Length
IF	MARUE						0.0	0.0
TF	SCROW	FLY_BY				0.1	24.13	1.0
TF	FJAYY	FLY_BY				0.45	21.66	1.0
TF	LRSON	FLY_BY	+28000.0			26.07	29.08	12.53
TF	GITRR	FLY_BY	+25000.0		280.0	7.31	16.51	12.53
TF	DUUNN	FLY_BY	+20000.0			5.02	14.57	1.0
TF	CARZZ	FLY_BY	+16000.0			0.13	13.9	1.0
TF	AASPN	FLY_BY	+14000.0	-15000.0		12.67	5.67	2.78
TF	KADYN	FLY_BY	-13000.0			6.89	6.73	2.78
TF	EROCK	FLY_BY	+12000.0			25.35	11.49	2.53
TF	LUQAS	FLY_BY	-11000.0			0.43	5.71	2.53
TF	DSNEE	FLY_BY	8000.0		220.0	20.23	10.77	1.47
TF	MCKYE	FLY_BY	+7800.0			0.55	7.62	1.47
TF	MOUSS	FLY_BY	+6700.0			0.18	4.36	1.0
TF	GOOFY	FLY_BY	4000.0			0.12	9.47	1.0
TF	MIDDS	FLY_BY	4000.0			20.31	4.0	1.27
TF	LUVCI	FLY_BY				12.78	6.27	2.54
TF	QGATE	FLY_BY	+3000.0			62.38	8.83	2.9
TF	BREKE	FLY_BY	3000.0				3.34	1.63

## MARUE:KLGB:RW12 Evaluation Results Part 2/2

Leg Tp	End Pt	Turn Tp	DTA1	DTA1 Turn Rad	DTA1 Turn Alt	DTA1 Turn Spd	DTA1 Bank Ang	DTA1 Tailwind	DTA1 True Airspd	DTA1 vGround	DTA2	DTA2 Turn Rad	DTA2 Turn Alt	DTA2 Turn Spd	DTA2 Bank Ang	DTA2 Tailwind	DTA2 True Airspd	DTA2 vGround
IF	MARUE				0.0	0.0							0.0	0.0				
TF	SCROW	FLY_BY	0.0		41000.0	300.0	0.0	128.0	629.0	570.0	0.05	54.11	41000.0	300.0	5.0	128.0	629.0	570.0
TF	FJAYY	FLY_BY	0.05	54.11	41000.0	300.0	5.0	128.0	629.0	570.0	0.21	54.11	36398.0	300.0	5.0	119.0	573.0	570.0
TF	LRSON	FLY_BY	0.21	54.11	36398.0	300.0	5.0	119.0	573.0	570.0	12.53	54.11	29127.09	300.0	5.0	105.0	498.0	570.0
TF	GITRR	FLY_BY	12.53	54.11	29127.09	300.0	5.0	105.0	498.0	570.0	3.06	47.85	25000.0	280.0	5.0	96.0	431.0	536.0
TF	DUUNN	FLY_BY	3.06	47.85	25000.0	280.0	5.0	96.0	431.0	536.0	1.73	39.34	20000.0	280.0	5.0	87.0	395.0	486.0
TF	CARZZ	FLY_BY	1.73	39.34	20000.0	280.0	5.0	87.0	395.0	486.0	0.19	168.3	16100.34	280.0	1.0	79.0	370.0	449.0
TF	AASPN	FLY_BY	0.19	168.3	16100.34	280.0	1.0	79.0	370.0	449.0	2.78	25.07	14682.29	280.0	6.33	76.0	361.0	437.0
TF	KADYN	FLY_BY	2.78	25.07	14682.29	280.0	6.33	76.0	361.0	437.0	2.62	43.54	13000.0	280.0	3.44	73.0	351.0	424.0
TF	EROCK	FLY_BY	2.62	43.54	13000.0	280.0	3.44	73.0	351.0	424.0	2.53	11.27	12120.32	280.0	12.67	71.0	346.0	417.0
TF	LUQAS	FLY_BY	2.53	11.27	12120.32	280.0	12.67	71.0	346.0	417.0	0.52	138.29	10691.98	280.0	1.0	68.0	339.0	407.0
TF	DSNEE	FLY_BY	0.52	138.29	10691.98	280.0	1.0	68.0	339.0	407.0	1.47	8.26	8000.0	220.0	10.11	63.0	255.0	318.0
TF	MCKYE	FLY_BY	1.47	8.26	8000.0	220.0	10.11	63.0	255.0	318.0	0.4	83.36	7800.0	220.0	1.0	62.0	254.0	316.0
TF	MOUSS	FLY_BY	0.4	83.36	7800.0	220.0	1.0	62.0	254.0	316.0	0.13	80.23	6700.0	220.0	1.0	60.0	250.0	310.0
TF	GOOFY	FLY_BY	0.13	80.23	6700.0	220.0	1.0	60.0	250.0	310.0	0.07	72.65	4000.0	220.0	1.0	55.0	240.0	295.0
TF	MIDDS	FLY_BY	0.07	72.65	4000.0	220.0	1.0	55.0	240.0	295.0	1.27	7.08	4000.0	220.0	10.16	55.0	240.0	295.0
TF	LUVCI	FLY_BY	1.27	7.08	4000.0	220.0	10.16	55.0	240.0	295.0	1.27	11.32	4000.0	220.0	6.39	55.0	240.0	295.0
TF	QGATE	FLY_BY	1.27	11.32	4000.0	220.0	6.39	55.0	240.0	295.0	1.63	2.7	3835.01	220.0	25.0	55.0	239.0	294.0
TF	BREKE	FLY_BY	1.63	2.7	3835.01	220.0	25.0	55.0	239.0	294.0	0.0		3000.0	220.0	0.0	53.0	236.0	289.0

## MARUE:KLGB:RW12 Obstacle Evaluation

Start Pt	End Pt	Name	Source	AC (H/V) (ft) AMSL)	Lat	Long	Height (ft) AMSL	Mnts Area	Pri/Sec Area	ROC (ft)	WCVH (ft)	MOCA (ft)	Min OCS Alt (ft)	Date
MARUE	SCROW	TerrainPt_39_MARUE:KLGB:RW12_MARUE:SCROW		4E (+-250/+125)	N35° 13' 48.00"	W115° 19' 15.00"	6961.94	true	S	1272.2		8435	8434.14	11-Apr-2016 12:29:12
SCROW	FJAYY	TerrainPt_20_MARUE:KLGB:RW12_SCROW:FJAYY		4E (+-250/+125)	N35° 06' 33.00"	W115° 22' 06.00"	6190.94	true	P	2000.0		8391	8390.94	11-Apr-2016 12:29:12
FJAYY	LRSON	TerrainPt_30_MARUE:KLGB:RW12_FJAYY:LRSON		4E (+-250/+125)	N34° 52' 21.00"	W116° 20' 12.00"	4599.74	true	P	2000.0		6800	6799.74	11-Apr-2016 12:29:12
LRSON	GITRR	TerrainPt_27_FEYLA:KLGB:RW12_LRSON:GITRR		4E (+-250/+125)	N34° 40' 33.00"	W116° 35' 21.00"	4904.86	true	P	2000.0		7105	7104.86	11-Apr-2016 12:29:10
GITRR	DUUNN	TerrainPt_20_FEYLA:KLGB:RW12_GITRR:DUUNN		4E (+-250/+125)	N34° 38' 33.00"	W116° 37' 45.00"	5987.53	true	P	2000.0		8188	8187.53	11-Apr-2016 12:29:10
DUUNN	CARZZ	TerrainPt_12_FEYLA:KLGB:RW12_DUUNN:CARZZ		4E (+-250/+125)	N34° 17' 27.00"	W116° 56' 45.00"	8382.55	true	P	2000.0		10583	10582.55	11-Apr-2016 12:29:10
CARZZ	AASPN	TerrainPt_0_FEYLA:KLGB:RW12_CARZZ:AASPN		4E (+-250/+125)	N34° 15' 21.00"	W117° 00' 30.00"	8520.34	true	P	2000.0		10721	10720.34	11-Apr-2016 12:29:10
AASPN	KADYN	TerrainPt_22_FEYLA:KLGB:RW12_AASPN:KADYN		4E (+-250/+125)	N34° 15' 21.00"	W117° 00' 30.00"	8520.34	true	P	2000.0		10721	10720.34	11-Apr-2016 12:29:10
KADYN	EROCK	TerrainPt_46_FEYLA:KLGB:RW12_KADYN:EROCK		4E (+-250/+125)	N34° 11' 21.00"	W117° 03' 24.00"	6771.65	true	P	2000.0		8972	8971.65	11-Apr-2016 12:29:10
EROCK	LUQAS	TerrainPt_14_FEYLA:KLGB:RW12_EROCK:LUQAS		4E (+-250/+125)	N33° 59' 18.00"	W117° 14' 48.00"	3087.27	true	P	2000.0		5288	5287.27	11-Apr-2016 12:29:10
LUQAS	DSNEE	TerrainPt_2_FEYLA:KLGB:RW12_LUQAS:DSNEE		4E (+-250/+125)	N33° 57' 39.00"	W117° 16' 51.00"	3080.71	true	P	2000.0		5281	5280.71	11-Apr-2016 12:29:10
DSNEE	MCKYE	TerrainPt_31_EED:KLGB:RW12_DSNEE:MCKYE		4E (+-250/+125)	N33° 43' 09.00"	W117° 32' 39.00"	5501.97	true	P	2000.0		7702	7701.97	11-Apr-2016 12:29:09
MCKYE	MOUSS	TerrainPt_45_EED:KLGB:RW12_MCKYE:MOUSS		4E (+-250/+125)	N33° 43' 09.00"	W117° 32' 45.00"	5439.63	false	P	1000.0		6640	6639.63	11-Apr-2016 12:29:09
MOUSS	GOOFY	TerrainPt_9_EED:KLGB:RW12_MOUSS:GOOFY		4E (+-250/+125)	N33° 43' 57.00"	W117° 41' 57.00"	1774.93	true	P	2000.0		3975	3974.93	11-Apr-2016 12:29:09
GOOFY	MIDDS	06-028353	AIRNAV 2	1A (+-20/+3)	N33° 41' 35.31"	W117° 52' 56.80"	323.0	true	P	2000.0		2323	2323.0	11-Apr-2016 12:17:16
MIDDS	LUVCI	TerrainPt_14_EED:KLGB:RW12_MIDDS:LUVCI		4E (+-250/+125)	N33° 40' 57.00"	W118° 00' 21.00"	131.23	true	P	2000.0		2332	2331.23	11-Apr-2016 12:29:09
LUVCI	QGATE	TerrainPt_2_EED:KLGB:RW12_LUVCI:QGATE		4E (+-250/+125)	N33° 42' 27.00"	W118° 02' 45.00"	75.46	true	P	2000.0		2276	2275.46	11-Apr-2016 12:29:09
QGATE	BREKE	06-022791	AIRNAV 2	7E (+-3038/+125)	N33° 43' 32.45"	W118° 15' 32.69"	420.0	true	P	2000.0		2420	2420.0	11-Apr-2016 12:16:39

## MARUE:KLGB:RW12 Criteria Failures

No failures.

## Route Evaluation for MARUE:KLGB:RW25R,RW30

### MARUE:KLGB:RW25R,RW30 Evaluation Results Part 1/2

Leg Tp	End Pt	Turn Tp	Alt Restr	Alt Restr 2	Spd Restr	Turn Ang	Leg Length	Min Seg Length
IF	MARUE						0.0	0.0
TF	SCROW	FLY_BY				0.1	24.13	1.0
TF	FJAYY	FLY_BY				0.45	21.66	1.0
TF	LRSON	FLY_BY	+28000.0			26.07	29.08	12.53
TF	GITRR	FLY_BY	+25000.0		280.0	7.31	16.51	12.53
TF	DUUNN	FLY_BY	+20000.0			5.02	14.57	1.0
TF	CARZZ	FLY_BY	+16000.0			0.13	13.9	1.0
TF	AASPN	FLY_BY	+14000.0	-15000.0		12.67	5.67	2.78
TF	KADYN	FLY_BY	-13000.0			6.89	6.73	2.78
TF	EROCK	FLY_BY	+12000.0			25.35	11.49	2.53
TF	LUQAS	FLY_BY	-11000.0			0.43	5.71	2.53
TF	DSNEE	FLY_BY	8000.0		220.0	20.23	10.77	1.47
TF	MCKYE	FLY_BY	+7800.0			0.55	7.62	1.47
TF	MOUSS	FLY_BY	+6700.0			0.18	4.36	1.0
TF	GOOFY	FLY_BY	4000.0			0.12	9.47	1.0
TF	MIDDS	FLY_BY	4000.0			38.63	4.0	1.27

## MARUE:KLGB:RW25R,RW30 Evaluation Results Part 2/2

Leg Tp	End Pt	Turn Tp	DTA1	DTA1 Turn Rad	DTA1 Turn Alt	DTA1 Turn Spd	DTA1 Bank Ang	DTA1 Tailwind	DTA1 True Airspd	DTA1 vGround	DTA2	DTA2 Turn Rad	DTA2 Turn Alt	DTA2 Turn Spd	DTA2 Bank Ang	DTA2 Tailwind	DTA2 True Airspd	DTA2 vGround
IF	MARUE				0.0	0.0							0.0	0.0				
TF	SCROW	FLY_BY	0.0		41000.0	300.0	0.0	128.0	629.0	570.0	0.05	54.11	41000.0	300.0	5.0	128.0	629.0	570.0
TF	FJAYY	FLY_BY	0.05	54.11	41000.0	300.0	5.0	128.0	629.0	570.0	0.21	54.11	36398.0	300.0	5.0	119.0	573.0	570.0
TF	LRSON	FLY_BY	0.21	54.11	36398.0	300.0	5.0	119.0	573.0	570.0	12.53	54.11	29127.09	300.0	5.0	105.0	498.0	570.0
TF	GITRR	FLY_BY	12.53	54.11	29127.09	300.0	5.0	105.0	498.0	570.0	3.06	47.85	25000.0	280.0	5.0	96.0	431.0	536.0
TF	DUUNN	FLY_BY	3.06	47.85	25000.0	280.0	5.0	96.0	431.0	536.0	1.73	39.34	20000.0	280.0	5.0	87.0	395.0	486.0
TF	CARZZ	FLY_BY	1.73	39.34	20000.0	280.0	5.0	87.0	395.0	486.0	0.19	168.3	16100.34	280.0	1.0	79.0	370.0	449.0
TF	AASPN	FLY_BY	0.19	168.3	16100.34	280.0	1.0	79.0	370.0	449.0	2.78	25.07	14682.29	280.0	6.33	76.0	361.0	437.0
TF	KADYN	FLY_BY	2.78	25.07	14682.29	280.0	6.33	76.0	361.0	437.0	2.62	43.54	13000.0	280.0	3.44	73.0	351.0	424.0
TF	EROCK	FLY_BY	2.62	43.54	13000.0	280.0	3.44	73.0	351.0	424.0	2.53	11.27	12120.32	280.0	12.67	71.0	346.0	417.0
TF	LUQAS	FLY_BY	2.53	11.27	12120.32	280.0	12.67	71.0	346.0	417.0	0.52	138.29	10691.98	280.0	1.0	68.0	339.0	407.0
TF	DSNEE	FLY_BY	0.52	138.29	10691.98	280.0	1.0	68.0	339.0	407.0	1.47	8.26	8000.0	220.0	10.11	63.0	255.0	318.0
TF	MCKYE	FLY_BY	1.47	8.26	8000.0	220.0	10.11	63.0	255.0	318.0	0.4	83.36	7800.0	220.0	1.0	62.0	254.0	316.0
TF	MOUSS	FLY_BY	0.4	83.36	7800.0	220.0	1.0	62.0	254.0	316.0	0.13	80.23	6700.0	220.0	1.0	60.0	250.0	310.0
TF	GOOFY	FLY_BY	0.13	80.23	6700.0	220.0	1.0	60.0	250.0	310.0	0.07	72.65	4000.0	220.0	1.0	55.0	240.0	295.0
TF	MIDDS	FLY_BY	0.07	72.65	4000.0	220.0	1.0	55.0	240.0	295.0	1.27	3.62	4000.0	220.0	19.32	55.0	240.0	295.0

DSNEE RNAV

## MARUE:KLGB:RW25R,RW30 Obstacle Evaluation

Start Pt	End Pt	Name	Source	AC (H/V (ft) AMSL)	Lat	Long	Height (ft) AMSL	Mnts Area	Pri/Sec Area	ROC (ft)	WCVH (ft)	MOCA (ft)	Min OCS Alt (ft)	Date
MARUE	SCROW	TerrainPt_39_MARUE:KLGB:RW12_MARUE:SCROW		4E (+-250/+125)	N35° 13' 48.00"	W115° 19' 15.00"	6961.94	true	S	1272.2		8435	8434.14	11-Apr-2016 12:29:12
SCROW	FJAYY	TerrainPt_20_MARUE:KLGB:RW12_SCROW:FJAYY		4E (+-250/+125)	N35° 06' 33.00"	W115° 22' 06.00"	6190.94	true	P	2000.0		8391	8390.94	11-Apr-2016 12:29:12
FJAYY	LRSON	TerrainPt_30_MARUE:KLGB:RW12_FJAYY:LRSON		4E (+-250/+125)	N34° 52' 21.00"	W116° 20' 12.00"	4599.74	true	P	2000.0		6800	6799.74	11-Apr-2016 12:29:12
LRSON	GITRR	TerrainPt_27_FEYLA:KLGB:RW12_LRSON:GITRR		4E (+-250/+125)	N34° 40' 33.00"	W116° 35' 21.00"	4904.86	true	P	2000.0		7105	7104.86	11-Apr-2016 12:29:10
GITRR	DUUNN	TerrainPt_22_FEYLA:KLGB:RW12_GITRR:DUUNN		4E (+-250/+125)	N34° 38' 33.00"	W116° 37' 45.00"	5987.53	true	P	2000.0		8188	8187.53	11-Apr-2016 12:29:10
DUUNN	CARZZ	TerrainPt_12_FEYLA:KLGB:RW12_DUUNN:CARZZ		4E (+-250/+125)	N34° 17' 27.00"	W116° 56' 45.00"	8382.55	true	P	2000.0		10583	10582.55	11-Apr-2016 12:29:10
CARZZ	AASPN	TerrainPt_0_FEYLA:KLGB:RW12_CARZZ:AASPN		4E (+-250/+125)	N34° 15' 21.00"	W117° 00' 30.00"	8520.34	true	P	2000.0		10721	10720.34	11-Apr-2016 12:29:10
AASPN	KADYN	TerrainPt_22_FEYLA:KLGB:RW12_AASPN:KADYN		4E (+-250/+125)	N34° 15' 21.00"	W117° 00' 30.00"	8520.34	true	P	2000.0		10721	10720.34	11-Apr-2016 12:29:10
KADYN	EROCK	TerrainPt_46_FEYLA:KLGB:RW12_KADYN:EROCK		4E (+-250/+125)	N34° 11' 21.00"	W117° 03' 24.00"	6771.65	true	P	2000.0		8972	8971.65	11-Apr-2016 12:29:10
EROCK	LUQAS	TerrainPt_14_FEYLA:KLGB:RW12_EROCK:LUQAS		4E (+-250/+125)	N33° 59' 18.00"	W117° 14' 48.00"	3087.27	true	P	2000.0		5288	5287.27	11-Apr-2016 12:29:10
LUQAS	DSNEE	TerrainPt_2_FEYLA:KLGB:RW12_LUQAS:DSNEE		4E (+-250/+125)	N33° 57' 39.00"	W117° 16' 51.00"	3080.71	true	P	2000.0		5281	5280.71	11-Apr-2016 12:29:10
DSNEE	MCKYE	TerrainPt_31_EED:KLGB:RW12_DSNEE:MCKYE		4E (+-250/+125)	N33° 43' 09.00"	W117° 32' 39.00"	5501.97	true	P	2000.0		7702	7701.97	11-Apr-2016 12:29:09
MCKYE	MOUSS	TerrainPt_45_EED:KLGB:RW12_MCKYE:MOUSS		4E (+-250/+125)	N33° 43' 09.00"	W117° 32' 45.00"	5439.63	false	P	1000.0		6640	6639.63	11-Apr-2016 12:29:09
MOUSS	GOOFY	TerrainPt_9_EED:KLGB:RW12_MOUSS:GOOFY		4E (+-250/+125)	N33° 43' 57.00"	W117° 41' 57.00"	1774.93	true	P	2000.0		3975	3974.93	11-Apr-2016 12:29:09
GOOFY	MIDDS	06-028353	AIRNAV 2	1A (+-20/+3)	N33° 41' 35.31"	W117° 52' 56.80"	323.0	true	P	2000.0		2323	2323.0	11-Apr-2016 12:17:16

## MARUE:KLGB:RW25R,RW30 Criteria Failures

No failures.



## Route Evaluation for NATEE:KLGB:RW12

### NATEE:KLGB:RW12 Evaluation Results Part 1/2

Leg Tp	End Pt	Turn Tp	Alt Restr	Alt Restr 2	Spd Restr	Turn Ang	Leg Length	Min Seg Length
IF	NATEE						0.0	0.0
TF	FEYLA	FLY_BY				1.42	35.0	1.0
TF	LRSON	FLY_BY	+28000.0			0.64	29.59	1.0
TF	GITRR	FLY_BY	+25000.0		280.0	7.31	16.51	1.0
TF	DUUNN	FLY_BY	+20000.0			5.02	14.57	1.0
TF	CARZZ	FLY_BY	+16000.0			0.13	13.9	1.0
TF	AASPN	FLY_BY	+14000.0	-15000.0		12.67	5.67	2.78
TF	KADYN	FLY_BY	-13000.0			6.89	6.73	2.78
TF	EROCK	FLY_BY	+12000.0			25.35	11.49	2.53
TF	LUQAS	FLY_BY	-11000.0			0.43	5.71	2.53
TF	DSNEE	FLY_BY	8000.0		220.0	20.23	10.77	1.47
TF	MCKYE	FLY_BY	+7800.0			0.55	7.62	1.47
TF	MOUSS	FLY_BY	+6700.0			0.18	4.36	1.0
TF	GOOFY	FLY_BY	4000.0			0.12	9.47	1.0
TF	MIDDS	FLY_BY	4000.0			20.31	4.0	1.27
TF	LUVCI	FLY_BY				12.78	6.27	2.54
TF	QGATE	FLY_BY	+3000.0			62.38	8.83	2.9
TF	BREKE	FLY_BY	3000.0				3.34	1.63

## NATEE:KLGB:RW12 Evaluation Results Part 2/2

Leg Tp	End Pt	Turn Tp	DTA1	DTA1 Turn Rad	DTA1 Turn Alt	DTA1 Turn Spd	DTA1 Bank Ang	DTA1 Tailwind	DTA1 True Airspd	DTA1 vGround	DTA2	DTA2 Turn Rad	DTA2 Turn Alt	DTA2 Turn Spd	DTA2 Bank Ang	DTA2 Tailwind	DTA2 True Airspd	DTA2 vGround
IF	NATEE				0.0	0.0							0.0	0.0				
TF	FEYLA	FLY_BY	0.0		41000.0	300.0	0.0	128.0	629.0	570.0	0.67	54.11	36524.26	300.0	5.0	119.0	574.0	570.0
TF	LRSON	FLY_BY	0.67	54.11	36524.26	300.0	5.0	119.0	574.0	570.0	0.3	54.11	29127.09	300.0	5.0	105.0	498.0	570.0
TF	GITRR	FLY_BY	0.3	54.11	29127.09	300.0	5.0	105.0	498.0	570.0	3.06	47.85	25000.0	280.0	5.0	96.0	431.0	536.0
TF	DUJUNN	FLY_BY	3.06	47.85	25000.0	280.0	5.0	96.0	431.0	536.0	1.73	39.34	20000.0	280.0	5.0	87.0	395.0	486.0
TF	CARZZ	FLY_BY	1.73	39.34	20000.0	280.0	5.0	87.0	395.0	486.0	0.19	168.3	16100.34	280.0	1.0	79.0	370.0	449.0
TF	AASPN	FLY_BY	0.19	168.3	16100.34	280.0	1.0	79.0	370.0	449.0	2.78	25.07	14682.29	280.0	6.33	76.0	361.0	437.0
TF	KADYN	FLY_BY	2.78	25.07	14682.29	280.0	6.33	76.0	361.0	437.0	2.62	43.54	13000.0	280.0	3.44	73.0	351.0	424.0
TF	EROCK	FLY_BY	2.62	43.54	13000.0	280.0	3.44	73.0	351.0	424.0	2.53	11.27	12120.32	280.0	12.67	71.0	346.0	417.0
TF	LUQAS	FLY_BY	2.53	11.27	12120.32	280.0	12.67	71.0	346.0	417.0	0.52	138.29	10691.98	280.0	1.0	68.0	339.0	407.0
TF	DSNEE	FLY_BY	0.52	138.29	10691.98	280.0	1.0	68.0	339.0	407.0	1.47	8.26	8000.0	220.0	10.11	63.0	255.0	318.0
TF	MCKYE	FLY_BY	1.47	8.26	8000.0	220.0	10.11	63.0	255.0	318.0	0.4	83.36	7800.0	220.0	1.0	62.0	254.0	316.0
TF	MOUSS	FLY_BY	0.4	83.36	7800.0	220.0	1.0	62.0	254.0	316.0	0.13	80.23	6700.0	220.0	1.0	60.0	250.0	310.0
TF	GOOFY	FLY_BY	0.13	80.23	6700.0	220.0	1.0	60.0	250.0	310.0	0.07	72.65	4000.0	220.0	1.0	55.0	240.0	295.0
TF	MIDDS	FLY_BY	0.07	72.65	4000.0	220.0	1.0	55.0	240.0	295.0	1.27	7.08	4000.0	220.0	10.16	55.0	240.0	295.0
TF	LUVCI	FLY_BY	1.27	7.08	4000.0	220.0	10.16	55.0	240.0	295.0	1.27	11.32	4000.0	220.0	6.39	55.0	240.0	295.0
TF	QGATE	FLY_BY	1.27	11.32	4000.0	220.0	6.39	55.0	240.0	295.0	1.63	2.7	3835.01	220.0	25.0	55.0	239.0	294.0
TF	BREKE	FLY_BY	1.63	2.7	3835.01	220.0	25.0	55.0	239.0	294.0	0.0		3000.0	220.0	0.0	53.0	236.0	289.0

## NATEE:KLGB:RW12 Obstacle Evaluation

Start Pt	End Pt	Name	Source	AC (H/V (ft) AMSL)	Lat	Long	Height (ft) AMSL	Mnts Area	Pri/Sec Area	ROC (ft)	WCVH (ft)	MOCA (ft)	Min OCS Alt (ft)	Date
NATEE	FEYLA	TerrainPt_14_NATEE:KLGB:RW12_NATEE:FEYLA		4E (+-250/+125)	N35° 31' 30.00"	W115° 35' 21.00"	7919.95	true	P	2000.0		10120	10119.95	11-Apr-2016 12:29:13
FEYLA	LRSON	TerrainPt_0_FEYLA:KLGB:RW12_FEYLA:LRSON		4E (+-250/+125)	N34° 52' 21.00"	W116° 20' 12.00"	4599.74	true	P	2000.0		6800	6799.74	11-Apr-2016 12:29:10
LRSON	GITRR	TerrainPt_27_FEYLA:KLGB:RW12_LRSON:GITRR		4E (+-250/+125)	N34° 40' 33.00"	W116° 35' 21.00"	4904.86	true	P	2000.0		7105	7104.86	11-Apr-2016 12:29:10
GITRR	DUUNN	TerrainPt_20_FEYLA:KLGB:RW12_GITRR:DUUNN		4E (+-250/+125)	N34° 38' 33.00"	W116° 37' 45.00"	5987.53	true	P	2000.0		8188	8187.53	11-Apr-2016 12:29:10
DUUNN	CARZZ	TerrainPt_12_FEYLA:KLGB:RW12_DUUNN:CARZZ		4E (+-250/+125)	N34° 17' 27.00"	W116° 56' 45.00"	8382.55	true	P	2000.0		10583	10582.55	11-Apr-2016 12:29:10
CARZZ	AASPN	TerrainPt_0_FEYLA:KLGB:RW12_CARZZ:AASPN		4E (+-250/+125)	N34° 15' 21.00"	W117° 00' 30.00"	8520.34	true	P	2000.0		10721	10720.34	11-Apr-2016 12:29:10
AASPN	KADYN	TerrainPt_22_FEYLA:KLGB:RW12_AASPN:KADYN		4E (+-250/+125)	N34° 15' 21.00"	W117° 00' 30.00"	8520.34	true	P	2000.0		10721	10720.34	11-Apr-2016 12:29:10
KADYN	EROCK	TerrainPt_46_FEYLA:KLGB:RW12_KADYN:EROCK		4E (+-250/+125)	N34° 11' 21.00"	W117° 03' 24.00"	6771.65	true	P	2000.0		8972	8971.65	11-Apr-2016 12:29:10
EROCK	LUQAS	TerrainPt_14_FEYLA:KLGB:RW12_EROCK:LUQAS		4E (+-250/+125)	N33° 59' 18.00"	W117° 14' 48.00"	3087.27	true	P	2000.0		5288	5287.27	11-Apr-2016 12:29:10
LUQAS	DSNEE	TerrainPt_2_FEYLA:KLGB:RW12_LUQAS:DSNEE		4E (+-250/+125)	N33° 57' 39.00"	W117° 16' 51.00"	3080.71	true	P	2000.0		5281	5280.71	11-Apr-2016 12:29:10
DSNEE	MCKYE	TerrainPt_31_EED:KLGB:RW12_DSNEE:MCKYE		4E (+-250/+125)	N33° 43' 09.00"	W117° 32' 39.00"	5501.97	true	P	2000.0		7702	7701.97	11-Apr-2016 12:29:09
MCKYE	MOUSS	TerrainPt_45_EED:KLGB:RW12_MCKYE:MOUSS		4E (+-250/+125)	N33° 43' 09.00"	W117° 32' 45.00"	5439.63	false	P	1000.0		6640	6639.63	11-Apr-2016 12:29:09
MOUSS	GOOFY	TerrainPt_9_EED:KLGB:RW12_MOUSS:GOOFY		4E (+-250/+125)	N33° 43' 57.00"	W117° 41' 57.00"	1774.93	true	P	2000.0		3975	3974.93	11-Apr-2016 12:29:09
GOOFY	MIDDS	06-028353	AIRNAV 2	1A (+-20/+3)	N33° 41' 35.31"	W117° 52' 56.80"	323.0	true	P	2000.0		2323	2323.0	11-Apr-2016 12:17:16
MIDDS	LUVCI	TerrainPt_14_EED:KLGB:RW12_MIDDS:LUVCI		4E (+-250/+125)	N33° 40' 57.00"	W118° 00' 21.00"	131.23	true	P	2000.0		2332	2331.23	11-Apr-2016 12:29:09
LUVCI	QGATE	TerrainPt_2_EED:KLGB:RW12_LUVCI:QGATE		4E (+-250/+125)	N33° 42' 27.00"	W118° 02' 45.00"	75.46	true	P	2000.0		2276	2275.46	11-Apr-2016 12:29:09
QGATE	BREKE	06-022791	AIRNAV 2	7E (+-3038/+125)	N33° 43' 32.45"	W118° 15' 32.69"	420.0	true	P	2000.0		2420	2420.0	11-Apr-2016 12:16:39

## NATEE:KLGB:RW12 Criteria Failures

No failures.

## Route Evaluation for NATEE:KLGB:RW25R,RW30

### NATEE:KLGB:RW25R,RW30 Evaluation Results Part 1/2

Leg Tp	End Pt	Turn Tp	Alt Restr	Alt Restr 2	Spd Restr	Turn Ang	Leg Length	Min Seg Length
IF	NATEE						0.0	0.0
TF	FEYLA	FLY_BY				1.42	35.0	1.0
TF	LRSON	FLY_BY	+28000.0			0.64	29.59	1.0
TF	GITRR	FLY_BY	+25000.0		280.0	7.31	16.51	1.0
TF	DUUNN	FLY_BY	+20000.0			5.02	14.57	1.0
TF	CARZZ	FLY_BY	+16000.0			0.13	13.9	1.0
TF	AASPN	FLY_BY	+14000.0	-15000.0		12.67	5.67	2.78
TF	KADYN	FLY_BY	-13000.0			6.89	6.73	2.78
TF	EROCK	FLY_BY	+12000.0			25.35	11.49	2.53
TF	LUQAS	FLY_BY	-11000.0			0.43	5.71	2.53
TF	DSNEE	FLY_BY	8000.0		220.0	20.23	10.77	1.47
TF	MCKYE	FLY_BY	+7800.0			0.55	7.62	1.47
TF	MOUSS	FLY_BY	+6700.0			0.18	4.36	1.0
TF	GOOFY	FLY_BY	4000.0			0.12	9.47	1.0
TF	MIDDS	FLY_BY	4000.0			38.63	4.0	1.27

## NATEE:KLGB:RW25R,RW30 Evaluation Results Part 2/2

Leg Tp	End Pt	Turn Tp	DTA1	DTA1 Turn Rad	DTA1 Turn Alt	DTA1 Turn Spd	DTA1 Bank Ang	DTA1 Tailwind	DTA1 True Airspd	DTA1 vGround	DTA2	DTA2 Turn Rad	DTA2 Turn Alt	DTA2 Turn Spd	DTA2 Bank Ang	DTA2 Tailwind	DTA2 True Airspd	DTA2 vGround
IF	NATEE				0.0	0.0							0.0	0.0				
TF	FEYLA	FLY_BY	0.0		41000.0	300.0	0.0	128.0	629.0	570.0	0.67	54.11	36524.26	300.0	5.0	119.0	574.0	570.0
TF	LRSON	FLY_BY	0.67	54.11	36524.26	300.0	5.0	119.0	574.0	570.0	0.3	54.11	29127.09	300.0	5.0	105.0	498.0	570.0
TF	GITRR	FLY_BY	0.3	54.11	29127.09	300.0	5.0	105.0	498.0	570.0	3.06	47.85	25000.0	280.0	5.0	96.0	431.0	536.0
TF	DUUNN	FLY_BY	3.06	47.85	25000.0	280.0	5.0	96.0	431.0	536.0	1.73	39.34	20000.0	280.0	5.0	87.0	395.0	486.0
TF	CARZZ	FLY_BY	1.73	39.34	20000.0	280.0	5.0	87.0	395.0	486.0	0.19	168.3	16100.34	280.0	1.0	79.0	370.0	449.0
TF	AASPN	FLY_BY	0.19	168.3	16100.34	280.0	1.0	79.0	370.0	449.0	2.78	25.07	14682.29	280.0	6.33	76.0	361.0	437.0
TF	KADYN	FLY_BY	2.78	25.07	14682.29	280.0	6.33	76.0	361.0	437.0	2.62	43.54	13000.0	280.0	3.44	73.0	351.0	424.0
TF	EROCK	FLY_BY	2.62	43.54	13000.0	280.0	3.44	73.0	351.0	424.0	2.53	11.27	12120.32	280.0	12.67	71.0	346.0	417.0
TF	LUQAS	FLY_BY	2.53	11.27	12120.32	280.0	12.67	71.0	346.0	417.0	0.52	138.29	10691.98	280.0	1.0	68.0	339.0	407.0
TF	DSNEE	FLY_BY	0.52	138.29	10691.98	280.0	1.0	68.0	339.0	407.0	1.47	8.26	8000.0	220.0	10.11	63.0	255.0	318.0
TF	MCKYE	FLY_BY	1.47	8.26	8000.0	220.0	10.11	63.0	255.0	318.0	0.4	83.36	7800.0	220.0	1.0	62.0	254.0	316.0
TF	MOUSS	FLY_BY	0.4	83.36	7800.0	220.0	1.0	62.0	254.0	316.0	0.13	80.23	6700.0	220.0	1.0	60.0	250.0	310.0
TF	GOOFY	FLY_BY	0.13	80.23	6700.0	220.0	1.0	60.0	250.0	310.0	0.07	72.65	4000.0	220.0	1.0	55.0	240.0	295.0
TF	MIDDS	FLY_BY	0.07	72.65	4000.0	220.0	1.0	55.0	240.0	295.0	1.27	3.62	4000.0	220.0	19.32	55.0	240.0	295.0

DSNEE RNAV

## NATEE:KLGB:RW25R,RW30 Obstacle Evaluation

Start Pt	End Pt	Name	Source	AC (H/V) (ft) AMSL)	Lat	Long	Height (ft) AMSL	Mnts Area	Pri/Sec Area	ROC (ft)	WCVH (ft)	MOCA (ft)	Min OCS Alt (ft)	Date
NATEE	FEYLA	TerrainPt_14_NATEE:KLGB:RW12_NATEE:FEYLA		4E (+-250/+125)	N35° 31' 30.00"	W115° 35' 21.00"	7919.95	true	P	2000.0		10120	10119.95	11-Apr-2016 12:29:13
FEYLA	LRSON	TerrainPt_0_FEYLA:KLGB:RW12_FEYLA:LRSON		4E (+-250/+125)	N34° 52' 21.00"	W116° 20' 12.00"	4599.74	true	P	2000.0		6800	6799.74	11-Apr-2016 12:29:10
LRSON	GITRR	TerrainPt_27_FEYLA:KLGB:RW12_LRSON:GITRR		4E (+-250/+125)	N34° 40' 33.00"	W116° 35' 21.00"	4904.86	true	P	2000.0		7105	7104.86	11-Apr-2016 12:29:10
GITRR	DUUNN	TerrainPt_20_FEYLA:KLGB:RW12_GITRR:DUUNN		4E (+-250/+125)	N34° 38' 33.00"	W116° 37' 45.00"	5987.53	true	P	2000.0		8188	8187.53	11-Apr-2016 12:29:10
DUUNN	CARZZ	TerrainPt_12_FEYLA:KLGB:RW12_DUUNN:CARZZ		4E (+-250/+125)	N34° 17' 27.00"	W116° 56' 45.00"	8382.55	true	P	2000.0		10583	10582.55	11-Apr-2016 12:29:10
CARZZ	AASPN	TerrainPt_0_FEYLA:KLGB:RW12_CARZZ:AASPN		4E (+-250/+125)	N34° 15' 21.00"	W117° 00' 30.00"	8520.34	true	P	2000.0		10721	10720.34	11-Apr-2016 12:29:10
AASPN	KADYN	TerrainPt_22_FEYLA:KLGB:RW12_AASPN:KADYN		4E (+-250/+125)	N34° 15' 21.00"	W117° 00' 30.00"	8520.34	true	P	2000.0		10721	10720.34	11-Apr-2016 12:29:10
KADYN	EROCK	TerrainPt_46_FEYLA:KLGB:RW12_KADYN:EROCK		4E (+-250/+125)	N34° 11' 21.00"	W117° 03' 24.00"	6771.65	true	P	2000.0		8972	8971.65	11-Apr-2016 12:29:10
EROCK	LUQAS	TerrainPt_14_FEYLA:KLGB:RW12_EROCK:LUQAS		4E (+-250/+125)	N33° 59' 18.00"	W117° 14' 48.00"	3087.27	true	P	2000.0		5288	5287.27	11-Apr-2016 12:29:10
LUQAS	DSNEE	TerrainPt_2_FEYLA:KLGB:RW12_LUQAS:DSNEE		4E (+-250/+125)	N33° 57' 39.00"	W117° 16' 51.00"	3080.71	true	P	2000.0		5281	5280.71	11-Apr-2016 12:29:10
DSNEE	MCKYE	TerrainPt_31_EED:KLGB:RW12_DSNEE:MCKYE		4E (+-250/+125)	N33° 43' 09.00"	W117° 32' 39.00"	5501.97	true	P	2000.0		7702	7701.97	11-Apr-2016 12:29:09
MCKYE	MOUSS	TerrainPt_45_EED:KLGB:RW12_MCKYE:MOUSS		4E (+-250/+125)	N33° 43' 09.00"	W117° 32' 45.00"	5439.63	false	P	1000.0		6640	6639.63	11-Apr-2016 12:29:09
MOUSS	GOOFY	TerrainPt_9_EED:KLGB:RW12_MOUSS:GOOFY		4E (+-250/+125)	N33° 43' 57.00"	W117° 41' 57.00"	1774.93	true	P	2000.0		3975	3974.93	11-Apr-2016 12:29:09
GOOFY	MIDDS	06-028353	AIRNAV 2	1A (+-20/+3)	N33° 41' 35.31"	W117° 52' 56.80"	323.0	true	P	2000.0		2323	2323.0	11-Apr-2016 12:17:16

## NATEE:KLGB:RW25R,RW30 Criteria Failures

No failures.

### Evaluation Input

Name:	RS Results DSNEE RNAV
Project:	LGB_SNA DSNEE STAR_Paperwork_20150622
Last evaluated:	11-Apr-2016 12:21:20
Evaluated obstacles?:	true
Obstacle Database:	AIRNAV2
Evaluated terrain?:	true
Worst Case Vegetation Height (ft) AGL:	0

DSNEE RNAV

## Terrain Information

Terrain Extractor Name	Extractor Location	Extractor Type	Resolution
DTED 3 Sec	C:\Program Files (x86)\TARGETS\data\DTED-3Sec	org.mitre.caasd.terrain.DTEExtractor	3.0

### Procedure Criteria Failures

No failures.

### Evaluation Notes and Warnings

No failures.

### Obstacles Requiring Accuracy Code Verification

None.

## RS Results Landing KSNA DSNEE

Last Evaluation: 11-Apr-2016 12:17:39  
Reference Software Version: 1.5.3

### Route Evaluation for EED:Landing KSNA DSNEE

#### EED:Landing KSNA DSNEE Evaluation Results Part 1/2

Leg Tp	End Pt	Turn Tp	Alt Restr	Alt Restr 2	Spd Restr	Turn Ang	Leg Length	Min Seg Length
IF	EED						0.0	0.0
TF	ONLYY	FLY_BY				0.02	30.21	1.0
TF	FOVOL	FLY_BY				28.78	39.21	13.88
TF	DRTHI	FLY_BY				1.39	31.67	13.88
TF	YELLA	FLY_BY	+24000.0		280.0	0.11	6.43	1.0
TF	BRCKK	FLY_BY	+21000.0			0.24	10.82	1.0
TF	ROADE	FLY_BY	+17000.0	-19000.0		1.46	10.73	1.0
TF	PHIYA	FLY_BY	-13000.0			0.0	11.31	1.0
TF	DSNEE	FLY_BY	8000.0		220.0	12.96	23.48	1.47
TF	JWARD	FLY_OVER					3.12	1.47
VM							0.0	0.0

## EED:Landing KSNA DSNEE Evaluation Results Part 2/2

Leg Tp	End Pt	Turn Tp	DTA1	DTA1 Turn Rad	DTA1 Turn Alt	DTA1 Turn Spd	DTA1 Bank Ang	DTA1 Tailwind	DTA1 True Airspd	DTA1 vGround	DTA2	DTA2 Turn Rad	DTA2 Turn Alt	DTA2 Turn Spd	DTA2 Bank Ang	DTA2 Tailwind	DTA2 True Airspd	DTA2 vGround
IF	EED				0.0	0.0							0.0	0.0				
TF	ONLYY	FLY_BY	0.0		41000.0	300.0	0.0	128.0	629.0	570.0	0.0		41000.0	300.0	0.0	128.0	629.0	570.0
TF	FOVOL	FLY_BY	0.0		41000.0	300.0	0.0	128.0	629.0	570.0	13.88	54.11	33525.36	300.0	5.0	113.0	541.0	570.0
TF	DRTHI	FLY_BY	13.88	54.11	33525.36	300.0	5.0	113.0	541.0	570.0	0.59	48.93	25606.82	300.0	5.0	98.0	467.0	542.0
TF	YELLA	FLY_BY	0.59	48.93	25606.82	300.0	5.0	98.0	467.0	542.0	0.04	46.08	24000.0	280.0	5.0	95.0	424.0	526.0
TF	BRCKK	FLY_BY	0.04	46.08	24000.0	280.0	5.0	95.0	424.0	526.0	0.09	40.98	21000.0	280.0	5.0	89.0	402.0	496.0
TF	ROADE	FLY_BY	0.09	40.98	21000.0	280.0	5.0	89.0	402.0	496.0	2.21	173.59	17000.0	280.0	1.0	81.0	375.0	456.0
TF	PHIYA	FLY_BY	2.21	173.59	17000.0	280.0	1.0	81.0	375.0	456.0	0.0		13000.0	280.0	0.0	73.0	351.0	424.0
TF	DSNEE	FLY_BY	0.0		13000.0	280.0	0.0	73.0	351.0	424.0	1.47	12.97	8000.0	220.0	6.48	63.0	255.0	318.0
TF	JWARD	FLY_OVER	1.47	12.97	8000.0	220.0	6.48	63.0	255.0	318.0	0.0		7600.0	220.0	0.0	62.0	253.0	315.0
VM			0.0		7600.0	220.0	0.0	62.0	253.0	315.0			0.0	0.0				

## EED:Landing KSNA DSNEE Obstacle Evaluation

Start Pt	End Pt	Name	Source	AC (H/V (ft) AMSL)	Lat	Long	Height (ft) AMSL	Mnts Area	Pri/Sec Area	ROC (ft)	WCVH (ft)	MOCA (ft)	Min OCS Alt (ft)	Date
EED	ONLYY	TerrainPt_23_EED:Landing KSNA DSNEE_EED:ONLYY		4E (+-250/+125)	N34° 37' 45.00"	W114° 35' 03.00"	2975.72	true	P	2000.0		5176	5175.72	11-Apr-2016 12:21:19
ONLYY	FOVOL	TerrainPt_27_EED:Landing KSNA DSNEE_ONLYY:FOVOL		4E (+-250/+125)	N34° 21' 18.00"	W115° 11' 06.00"	3746.72	true	P	2000.0		5947	5946.72	11-Apr-2016 12:21:19
FOVOL	DRTHI	TerrainPt_38_EED:Landing KSNA DSNEE_FOVOL:DRTHI		4E (+-250/+125)	N34° 00' 24.00"	W116° 14' 30.00"	5820.21	true	P	2000.0		8021	8020.21	11-Apr-2016 12:21:19
DRTHI	YELLA	TerrainPt_0_EED:Landing KSNA DSNEE_DRTHI:YELLA		4E (+-250/+125)	N34° 00' 24.00"	W116° 14' 30.00"	5820.21	true	P	2000.0		8021	8020.21	11-Apr-2016 12:21:19
YELLA	BRCKK	TerrainPt_14_EED:Landing KSNA DSNEE_YELLA:BRCKK		4E (+-250/+125)	N34° 00' 57.00"	W116° 19' 39.00"	5249.34	true	P	2000.0		7450	7449.34	11-Apr-2016 12:21:19
BRCKK	ROADE	OBS-4001-IPDS	AIRNAV 2	6C (+-1000/+20)	N33° 48' 54.00"	W116° 40' 48.00"	11034.0	true	S	1167.98		12202	12201.98	11-Apr-2016 12:16:42
ROADE	PHIYA	TerrainPt_27_EED:Landing KSNA DSNEE_ROADE:PHIYA		4E (+-250/+125)	N33° 50' 06.00"	W116° 43' 39.00"	8421.92	true	P	2000.0		10622	10621.92	11-Apr-2016 12:21:19
PHIYA	DSNEE	TerrainPt_30_EED:Landing KSNA DSNEE_PHIYA:DSNEE		4E (+-250/+125)	N33° 49' 24.00"	W116° 56' 27.00"	3887.8	true	P	2000.0		6088	6087.8	11-Apr-2016 12:21:19
DSNEE	JWARD	TerrainPt_9_EED:Landing KSNA DSNEE_DSNEE:JWARD		4E (+-250/+125)	N33° 43' 18.00"	W117° 32' 39.00"	5374.02	true	P	2000.0		7575	7574.02	11-Apr-2016 12:21:19

## EED:Landing KSNA DSNEE Criteria Failures

No failures.



## Route Evaluation for EMLLD:Landing KSNA DSNEE

### EMLLD:Landing KSNA DSNEE Evaluation Results Part 1/2

Leg Tp	End Pt	Turn Tp	Alt Restr	Alt Restr 2	Spd Restr	Turn Ang	Leg Length	Min Seg Length
IF	EMLLD						0.0	0.0
TF	LITNG	FLY_BY				0.03	38.66	1.0
TF	WTTCH	FLY_BY	+30000.0			2.29	37.01	1.0
TF	DRTHI	FLY_BY				13.06	27.86	5.6
TF	YELLA	FLY_BY	+24000.0		280.0	0.11	6.43	5.6
TF	BRCKK	FLY_BY	+21000.0			0.24	10.82	1.0
TF	ROADE	FLY_BY	+17000.0	-19000.0		1.46	10.73	1.0
TF	PHIYA	FLY_BY	-13000.0			0.0	11.31	1.0
TF	DSNEE	FLY_BY	8000.0		220.0	12.96	23.48	1.47
TF	JWARD	FLY_OVER					3.12	1.47
VM							0.0	0.0

### EMLLD:Landing KSNA DSNEE Evaluation Results Part 2/2

Leg Tp	End Pt	Turn Tp	DTA1	DTA1 Turn Rad	DTA1 Turn Alt	DTA1 Turn Spd	DTA1 Bank Ang	DTA1 Tailwind	DTA1 True Airspd	DTA1 vGround	DTA2	DTA2 Turn Rad	DTA2 Turn Alt	DTA2 Turn Spd	DTA2 Bank Ang	DTA2 Tailwind	DTA2 True Airspd	DTA2 vGround
IF	EMLLD				0.0	0.0							0.0	0.0				
TF	LITNG	FLY_BY	0.0		41000.0	300.0	0.0	128.0	629.0	570.0	0.01	54.11	41000.0	300.0	5.0	128.0	629.0	570.0
TF	WTTCH	FLY_BY	0.01	54.11	41000.0	300.0	5.0	128.0	629.0	570.0	1.08	54.11	32572.3	300.0	5.0	111.0	532.0	570.0
TF	DRTHI	FLY_BY	1.08	54.11	32572.3	300.0	5.0	111.0	532.0	570.0	5.6	48.93	25606.82	300.0	5.0	98.0	467.0	542.0
TF	YELLA	FLY_BY	5.6	48.93	25606.82	300.0	5.0	98.0	467.0	542.0	0.04	46.08	24000.0	280.0	5.0	95.0	424.0	526.0
TF	BRCKK	FLY_BY	0.04	46.08	24000.0	280.0	5.0	95.0	424.0	526.0	0.09	40.98	21000.0	280.0	5.0	89.0	402.0	496.0
TF	ROADE	FLY_BY	0.09	40.98	21000.0	280.0	5.0	89.0	402.0	496.0	2.21	173.59	17000.0	280.0	1.0	81.0	375.0	456.0
TF	PHIYA	FLY_BY	2.21	173.59	17000.0	280.0	1.0	81.0	375.0	456.0	0.0		13000.0	280.0	0.0	73.0	351.0	424.0
TF	DSNEE	FLY_BY	0.0		13000.0	280.0	0.0	73.0	351.0	424.0	1.47	12.97	8000.0	220.0	6.48	63.0	255.0	318.0
TF	JWARD	FLY_OVER	1.47	12.97	8000.0	220.0	6.48	63.0	255.0	318.0	0.0		7600.0	220.0	0.0	62.0	253.0	315.0
VM			0.0		7600.0	220.0	0.0	62.0	253.0	315.0			0.0	0.0				

DSNEE RNAV

## EMLLD:Landing KSNA DSNEE Obstacle Evaluation

Start Pt	End Pt	Name	Source	AC (H/V (ft) AMSL)	Lat	Long	Height (ft) AMSL	Mnts Area	Pri/Sec Area	ROC (ft)	WCVH (ft)	MOCA (ft)	Min OCS Alt (ft)	Date
EMLLD	LITNG	TerrainPt_7_EMLLD:Landing KSNA DSNEE_EMLLD:LITNG		4E (+- 250/+125)	N33° 51' 36.00"	W114° 40' 18.00"	3375.98	true	P	2000.0		5576	5575.98	11-Apr-2016 12:21:19
LITNG	WTTCH	TerrainPt_20_EMLLD:Landing KSNA DSNEE_LITNG:WTTCH		4E (+- 250/+125)	N33° 50' 00.00"	W115° 02' 21.00"	3845.14	true	P	2000.0		6046	6045.14	11-Apr-2016 12:21:19
WTTCH	DRTHI	TerrainPt_28_EMLLD:Landing KSNA DSNEE_WTTCH:DRTHI		4E (+- 250/+125)	N34° 00' 24.00"	W116° 14' 30.00"	5820.21	true	P	2000.0		8021	8020.21	11-Apr-2016 12:21:19
DRTHI	YELLA	TerrainPt_0_EED:Landing KSNA DSNEE_DRTHI:YELLA		4E (+- 250/+125)	N34° 00' 24.00"	W116° 14' 30.00"	5820.21	true	P	2000.0		8021	8020.21	11-Apr-2016 12:21:19
YELLA	BRCKK	TerrainPt_14_EED:Landing KSNA DSNEE_YELLA:BRCKK		4E (+- 250/+125)	N34° 00' 57.00"	W116° 19' 39.00"	5249.34	true	P	2000.0		7450	7449.34	11-Apr-2016 12:21:19
BRCKK	ROADE	OBS-4001-IPDS	AIRNAV 2	6C (+- 1000/+20)	N33° 48' 54.00"	W116° 40' 48.00"	11034.0	true	S	1167.98		12202	12201.98	11-Apr-2016 12:16:42
ROADE	PHIYA	TerrainPt_27_EED:Landing KSNA DSNEE_ROADE:PHIYA		4E (+- 250/+125)	N33° 50' 06.00"	W116° 43' 39.00"	8421.92	true	P	2000.0		10622	10621.92	11-Apr-2016 12:21:19
PHIYA	DSNEE	TerrainPt_30_EED:Landing KSNA DSNEE_PHIYA:DSNEE		4E (+- 250/+125)	N33° 49' 24.00"	W116° 56' 27.00"	3887.8	true	P	2000.0		6088	6087.8	11-Apr-2016 12:21:19
DSNEE	JWARD	TerrainPt_9_EED:Landing KSNA DSNEE_DSNEE:JWARD		4E (+- 250/+125)	N33° 43' 18.00"	W117° 32' 39.00"	5374.02	true	P	2000.0		7575	7574.02	11-Apr-2016 12:21:19

## EMLLD:Landing KSNA DSNEE Criteria Failures

No failures.

## Route Evaluation for FEYLA:Landing KSNA DSNEE

### FEYLA:Landing KSNA DSNEE Evaluation Results Part 1/2

Leg Tp	End Pt	Turn Tp	Alt Restr	Alt Restr 2	Spd Restr	Turn Ang	Leg Length	Min Seg Length
IF	FEYLA						0.0	0.0
TF	LRSON	FLY_BY	+28000.0			0.64	29.59	1.0
TF	GITRR	FLY_BY	+25000.0		280.0	7.31	16.51	1.0
TF	DUUNN	FLY_BY	+20000.0			5.02	14.57	1.0
TF	CARZZ	FLY_BY	+16000.0			0.13	13.9	1.0
TF	AASPN	FLY_BY	+14000.0	-15000.0		12.67	5.67	2.78
TF	KADYN	FLY_BY	-13000.0			6.89	6.73	2.78
TF	EROCK	FLY_BY	+12000.0			25.35	11.49	2.53
TF	LUQAS	FLY_BY	-11000.0			0.43	5.71	2.53
TF	DSNEE	FLY_BY	8000.0		220.0	19.6	10.77	1.47
TF	JWARD	FLY_OVER					3.12	1.47
VM							0.0	0.0

### FEYLA:Landing KSNA DSNEE Evaluation Results Part 2/2

Leg Tp	End Pt	Turn Tp	DTA1	DTA1 Turn Rad	DTA1 Turn Alt	DTA1 Turn Spd	DTA1 Bank Ang	DTA1 Tailwind	DTA1 True Airspd	DTA1 vGround	DTA2	DTA2 Turn Rad	DTA2 Turn Alt	DTA2 Turn Spd	DTA2 Bank Ang	DTA2 Tailwind	DTA2 True Airspd	DTA2 vGround
IF	FEYLA				0.0	0.0							0.0	0.0				
TF	LRSON	FLY_BY	0.0		36524.26	300.0	0.0	119.0	574.0	570.0	0.3	54.11	29127.09	300.0	5.0	105.0	498.0	570.0
TF	GITRR	FLY_BY	0.3	54.11	29127.09	300.0	5.0	105.0	498.0	570.0	3.06	47.85	25000.0	280.0	5.0	96.0	431.0	536.0
TF	DUUNN	FLY_BY	3.06	47.85	25000.0	280.0	5.0	96.0	431.0	536.0	1.73	39.34	20000.0	280.0	5.0	87.0	395.0	486.0
TF	CARZZ	FLY_BY	1.73	39.34	20000.0	280.0	5.0	87.0	395.0	486.0	0.19	168.3	16100.34	280.0	1.0	79.0	370.0	449.0
TF	AASPN	FLY_BY	0.19	168.3	16100.34	280.0	1.0	79.0	370.0	449.0	2.78	25.07	14682.29	280.0	6.33	76.0	361.0	437.0
TF	KADYN	FLY_BY	2.78	25.07	14682.29	280.0	6.33	76.0	361.0	437.0	2.62	43.54	13000.0	280.0	3.44	73.0	351.0	424.0
TF	EROCK	FLY_BY	2.62	43.54	13000.0	280.0	3.44	73.0	351.0	424.0	2.53	11.27	12120.32	280.0	12.67	71.0	346.0	417.0
TF	LUQAS	FLY_BY	2.53	11.27	12120.32	280.0	12.67	71.0	346.0	417.0	0.52	138.29	10691.98	280.0	1.0	68.0	339.0	407.0
TF	DSNEE	FLY_BY	0.52	138.29	10691.98	280.0	1.0	68.0	339.0	407.0	1.47	8.53	8000.0	220.0	9.8	63.0	255.0	318.0
TF	JWARD	FLY_OVER	1.47	8.53	8000.0	220.0	9.8	63.0	255.0	318.0	0.0		7600.0	220.0	0.0	62.0	253.0	315.0
VM			0.0		7600.0	220.0	0.0	62.0	253.0	315.0			0.0	0.0				

## FEYLA:Landing KSNA DSNEE Obstacle Evaluation

Start Pt	End Pt	Name	Source	AC (H/V (ft) AMSL)	Lat	Long	Height (ft) AMSL	Mnts Area	Pri/Sec Area	ROC (ft)	WCVH (ft)	MOCA (ft)	Min OCS Alt (ft)	Date
FEYLA	LRSON	TerrainPt_0_FEYLA:Landing KSNA DSNEE_FEYLA:LRSON		4E (+- 250/+125)	N34° 52' 21.00"	W116° 20' 12.00"	4599.74	true	P	2000.0		6800	6799.74	11-Apr-2016 12:21:19
LRSON	GITRR	TerrainPt_27_FEYLA:Landing KSNA DSNEE_LRSON:GITRR		4E (+- 250/+125)	N34° 40' 33.00"	W116° 35' 21.00"	4904.86	true	P	2000.0		7105	7104.86	11-Apr-2016 12:21:19
GITRR	DUUNN	TerrainPt_20_FEYLA:Landing KSNA DSNEE_GITRR:DUUNN		4E (+- 250/+125)	N34° 38' 33.00"	W116° 37' 45.00"	5987.53	true	P	2000.0		8188	8187.53	11-Apr-2016 12:21:19
DUUNN	CARZZ	TerrainPt_12_FEYLA:Landing KSNA DSNEE_DUUNN:CARZZ		4E (+- 250/+125)	N34° 17' 27.00"	W116° 56' 45.00"	8382.55	true	P	2000.0		10583	10582.55	11-Apr-2016 12:21:19
CARZZ	AASPN	TerrainPt_0_FEYLA:Landing KSNA DSNEE_CARZZ:AASPN		4E (+- 250/+125)	N34° 15' 21.00"	W117° 00' 30.00"	8520.34	true	P	2000.0		10721	10720.34	11-Apr-2016 12:21:19
AASPN	KADYN	TerrainPt_22_FEYLA:Landing KSNA DSNEE_AASPN:KADYN		4E (+- 250/+125)	N34° 15' 21.00"	W117° 00' 30.00"	8520.34	true	P	2000.0		10721	10720.34	11-Apr-2016 12:21:19
KADYN	EROCK	TerrainPt_46_FEYLA:Landing KSNA DSNEE_KADYN:EROCK		4E (+- 250/+125)	N34° 11' 21.00"	W117° 03' 24.00"	6771.65	true	P	2000.0		8972	8971.65	11-Apr-2016 12:21:19
EROCK	LUQAS	TerrainPt_14_FEYLA:Landing KSNA DSNEE_EROCK:LUQAS		4E (+- 250/+125)	N33° 59' 18.00"	W117° 14' 48.00"	3087.27	true	P	2000.0		5288	5287.27	11-Apr-2016 12:21:19
LUQAS	DSNEE	TerrainPt_2_FEYLA:Landing KSNA DSNEE_LUQAS:DSNEE		4E (+- 250/+125)	N33° 57' 39.00"	W117° 16' 51.00"	3080.71	true	P	2000.0		5281	5280.71	11-Apr-2016 12:21:19
DSNEE	JWARD	TerrainPt_9_EED:Landing KSNA DSNEE_DSNEE:JWARD		4E (+- 250/+125)	N33° 43' 18.00"	W117° 32' 39.00"	5374.02	true	P	2000.0		7575	7574.02	11-Apr-2016 12:21:19

## FEYLA:Landing KSNA DSNEE Criteria Failures

No failures.

# Route Evaluation for HIMDU:Landing KSNA DSNEE

## HIMDU:Landing KSNA DSNEE Evaluation Results Part 1/2

Leg Tp	End Pt	Turn Tp	Alt Restr	Alt Restr 2	Spd Restr	Turn Ang	Leg Length	Min Seg Length
IF	HIMDU						0.0	0.0
TF	WEELL	FLY_BY				0.17	15.1	1.0
TF	WURMO	FLY_BY				0.44	19.66	1.0
TF	THERS	FLY_BY				0.54	13.64	1.0
TF	FOVOL	FLY_BY				5.83	32.1	1.0
TF	DRTHI	FLY_BY				1.39	31.67	1.0
TF	YELLA	FLY_BY	+24000.0		280.0	0.11	6.43	1.0
TF	BRCKK	FLY_BY	+21000.0			0.24	10.82	1.0
TF	ROADE	FLY_BY	+17000.0	-19000.0		1.46	10.73	1.0
TF	PHIYA	FLY_BY	-13000.0			0.0	11.31	1.0
TF	DSNEE	FLY_BY	8000.0		220.0	12.96	23.48	1.47
TF	JWARD	FLY_OVER					3.12	1.47
VM							0.0	0.0

## HIMDU:Landing KSNA DSNEE Evaluation Results Part 2/2

Leg Tp	End Pt	Turn Tp	DTA1	DTA1 Turn Rad	DTA1 Turn Alt	DTA1 Turn Spd	DTA1 Bank Ang	DTA1 Tailwind	DTA1 True Airspd	DTA1 vGround	DTA2	DTA2 Turn Rad	DTA2 Turn Alt	DTA2 Turn Spd	DTA2 Bank Ang	DTA2 Tailwind	DTA2 True Airspd	DTA2 vGround
IF	HIMDU				0.0	0.0							0.0	0.0				
TF	WEELL	FLY_BY	0.0		41000.0	300.0	0.0	128.0	629.0	570.0	0.08	54.11	41000.0	300.0	5.0	128.0	629.0	570.0
TF	WURMO	FLY_BY	0.08	54.11	41000.0	300.0	5.0	128.0	629.0	570.0	0.21	54.11	41000.0	300.0	5.0	128.0	629.0	570.0
TF	THERS	FLY_BY	0.21	54.11	41000.0	300.0	5.0	128.0	629.0	570.0	0.25	54.11	41000.0	300.0	5.0	128.0	629.0	570.0
TF	FOVOL	FLY_BY	0.25	54.11	41000.0	300.0	5.0	128.0	629.0	570.0	2.75	54.11	33525.36	300.0	5.0	113.0	541.0	570.0
TF	DRTHI	FLY_BY	2.75	54.11	33525.36	300.0	5.0	113.0	541.0	570.0	0.59	48.93	25606.82	300.0	5.0	98.0	467.0	542.0
TF	YELLA	FLY_BY	0.59	48.93	25606.82	300.0	5.0	98.0	467.0	542.0	0.04	46.08	24000.0	280.0	5.0	95.0	424.0	526.0
TF	BRCKK	FLY_BY	0.04	46.08	24000.0	280.0	5.0	95.0	424.0	526.0	0.09	40.98	21000.0	280.0	5.0	89.0	402.0	496.0
TF	ROADE	FLY_BY	0.09	40.98	21000.0	280.0	5.0	89.0	402.0	496.0	2.21	173.59	17000.0	280.0	1.0	81.0	375.0	456.0
TF	PHIYA	FLY_BY	2.21	173.59	17000.0	280.0	1.0	81.0	375.0	456.0	0.0		13000.0	280.0	0.0	73.0	351.0	424.0
TF	DSNEE	FLY_BY	0.0		13000.0	280.0	0.0	73.0	351.0	424.0	1.47	12.97	8000.0	220.0	6.48	63.0	255.0	318.0
TF	JWARD	FLY_OVER	1.47	12.97	8000.0	220.0	6.48	63.0	255.0	318.0	0.0		7600.0	220.0	0.0	62.0	253.0	315.0
VM			0.0		7600.0	220.0	0.0	62.0	253.0	315.0			0.0	0.0				

## HIMDU:Landing KSNA DSNEE Obstacle Evaluation

Start Pt	End Pt	Name	Source	AC (H/V (ft) AMSL)	Lat	Long	Height (ft) AMSL	Mnts Area	Pri/Sec Area	ROC (ft)	WCVH (ft)	MOCA (ft)	Min OCS Alt (ft)	Date
HIMDU	WEELL	TerrainPt_37_HIMDU:Landing KSNA DSNEE_HIMDU:WEELL		4E (+- 250/+125)	N34° 18' 06.00"	W114° 17' 12.00"	3001.97	true	P	2000.0		5202	5201.97	11-Apr-2016 12:21:19
WEELL	WURMO	TerrainPt_0_HIMDU:Landing KSNA DSNEE_WEELL:WURMO		4E (+- 250/+125)	N34° 18' 51.00"	W114° 24' 42.00"	4120.73	true	P	2000.0		6321	6320.73	11-Apr-2016 12:21:19
WURMO	THERS	TerrainPt_1_HIMDU:Landing KSNA DSNEE_WURMO:THERS		4E (+- 250/+125)	N34° 15' 39.00"	W114° 49' 39.00"	4304.46	true	P	2000.0		6505	6504.46	11-Apr-2016 12:21:19
THERS	FOVOL	TerrainPt_36_HIMDU:Landing KSNA DSNEE_THERS:FOVOL		4E (+- 250/+125)	N34° 01' 48.00"	W115° 24' 06.00"	4396.33	true	P	2000.0		6597	6596.33	11-Apr-2016 12:21:19
FOVOL	DRTHI	TerrainPt_38_EED:Landing KSNA DSNEE_FOVOL:DRTHI		4E (+- 250/+125)	N34° 00' 24.00"	W116° 14' 30.00"	5820.21	true	P	2000.0		8021	8020.21	11-Apr-2016 12:21:19
DRTHI	YELLA	TerrainPt_0_EED:Landing KSNA DSNEE_DRTHI:YELLA		4E (+- 250/+125)	N34° 00' 24.00"	W116° 14' 30.00"	5820.21	true	P	2000.0		8021	8020.21	11-Apr-2016 12:21:19
YELLA	BRCKK	TerrainPt_14_EED:Landing KSNA DSNEE_YELLA:BRCKK		4E (+- 250/+125)	N34° 00' 57.00"	W116° 19' 39.00"	5249.34	true	P	2000.0		7450	7449.34	11-Apr-2016 12:21:19
BRCKK	ROADE	OBS-4001-IPDS	AIRNAV 2	6C (+- 1000/+20)	N33° 48' 54.00"	W116° 40' 48.00"	11034.0	true	S	1167.98		12202	12201.98	11-Apr-2016 12:16:42
ROADE	PHIYA	TerrainPt_27_EED:Landing KSNA DSNEE_ROADE:PHIYA		4E (+- 250/+125)	N33° 50' 06.00"	W116° 43' 39.00"	8421.92	true	P	2000.0		10622	10621.92	11-Apr-2016 12:21:19
PHIYA	DSNEE	TerrainPt_30_EED:Landing KSNA DSNEE_PHIYA:DSNEE		4E (+- 250/+125)	N33° 49' 24.00"	W116° 56' 27.00"	3887.8	true	P	2000.0		6088	6087.8	11-Apr-2016 12:21:19
DSNEE	JWARD	TerrainPt_9_EED:Landing KSNA DSNEE_DSNEE:JWARD		4E (+- 250/+125)	N33° 43' 18.00"	W117° 32' 39.00"	5374.02	true	P	2000.0		7575	7574.02	11-Apr-2016 12:21:19

## HIMDU:Landing KSNA DSNEE Criteria Failures

No failures.

## Route Evaluation for LRSON:Landing KSNA DSNEE

### LRSON:Landing KSNA DSNEE Evaluation Results Part 1/2

Leg Tp	End Pt	Turn Tp	Alt Restr	Alt Restr 2	Spd Restr	Turn Ang	Leg Length	Min Seg Length
IF	LRSON		+28000.0				0.0	0.0
TF	GITRR	FLY_BY	+25000.0		280.0	7.31	16.51	1.0
TF	DUUNN	FLY_BY	+20000.0			5.02	14.57	1.0
TF	CARZZ	FLY_BY	+16000.0			0.13	13.9	1.0
TF	AASPN	FLY_BY	+14000.0	-15000.0		12.67	5.67	2.78
TF	KADYN	FLY_BY	-13000.0			6.89	6.73	2.78
TF	EROCK	FLY_BY	+12000.0			25.35	11.49	2.53
TF	LUQAS	FLY_BY	-11000.0			0.43	5.71	2.53
TF	DSNEE	FLY_BY	8000.0		220.0	19.6	10.77	1.47
TF	JWARD	FLY_OVER					3.12	1.47
VM							0.0	0.0

### LRSON:Landing KSNA DSNEE Evaluation Results Part 2/2

Leg Tp	End Pt	Turn Tp	DTA1	DTA1 Turn Rad	DTA1 Turn Alt	DTA1 Turn Spd	DTA1 Bank Ang	DTA1 Tailwind	DTA1 True Airspd	DTA1 vGround	DTA2	DTA2 Turn Rad	DTA2 Turn Alt	DTA2 Turn Spd	DTA2 Bank Ang	DTA2 Tailwind	DTA2 True Airspd	DTA2 vGround
IF	LRSON				0.0	0.0							0.0	0.0				
TF	GITRR	FLY_BY	0.0		29127.09	300.0	0.0	105.0	498.0	570.0	3.06	47.85	25000.0	280.0	5.0	96.0	431.0	536.0
TF	DUUNN	FLY_BY	3.06	47.85	25000.0	280.0	5.0	96.0	431.0	536.0	1.73	39.34	20000.0	280.0	5.0	87.0	395.0	486.0
TF	CARZZ	FLY_BY	1.73	39.34	20000.0	280.0	5.0	87.0	395.0	486.0	0.19	168.3	16100.34	280.0	1.0	79.0	370.0	449.0
TF	AASPN	FLY_BY	0.19	168.3	16100.34	280.0	1.0	79.0	370.0	449.0	2.78	25.07	14682.29	280.0	6.33	76.0	361.0	437.0
TF	KADYN	FLY_BY	2.78	25.07	14682.29	280.0	6.33	76.0	361.0	437.0	2.62	43.54	13000.0	280.0	3.44	73.0	351.0	424.0
TF	EROCK	FLY_BY	2.62	43.54	13000.0	280.0	3.44	73.0	351.0	424.0	2.53	11.27	12120.32	280.0	12.67	71.0	346.0	417.0
TF	LUQAS	FLY_BY	2.53	11.27	12120.32	280.0	12.67	71.0	346.0	417.0	0.52	138.29	10691.98	280.0	1.0	68.0	339.0	407.0
TF	DSNEE	FLY_BY	0.52	138.29	10691.98	280.0	1.0	68.0	339.0	407.0	1.47	8.53	8000.0	220.0	9.8	63.0	255.0	318.0
TF	JWARD	FLY_OVER	1.47	8.53	8000.0	220.0	9.8	63.0	255.0	318.0	0.0		7600.0	220.0	0.0	62.0	253.0	315.0
VM			0.0		7600.0	220.0	0.0	62.0	253.0	315.0			0.0	0.0				

## LRSON:Landing KSNA DSNEE Obstacle Evaluation

Start Pt	End Pt	Name	Source	AC (H/V (ft) AMSL)	Lat	Long	Height (ft) AMSL	Mnts Area	Pri/Sec Area	ROC (ft)	WCVH (ft)	MOCA (ft)	Min OCS Alt (ft)	Date
LRSON	GITRR	TerrainPt_27_FEYLA:Landing KSNA DSNEE_LRSON:GITRR		4E (+- 250/+125)	N34° 40' 33.00"	W116° 35' 21.00"	4904.86	true	P	2000.0		7105	7104.86	11-Apr-2016 12:21:19
GITRR	DUUNN	TerrainPt_20_FEYLA:Landing KSNA DSNEE_GITRR:DUUNN		4E (+- 250/+125)	N34° 38' 33.00"	W116° 37' 45.00"	5987.53	true	P	2000.0		8188	8187.53	11-Apr-2016 12:21:19
DUUNN	CARZZ	TerrainPt_12_FEYLA:Landing KSNA DSNEE_DUUNN:CARZZ		4E (+- 250/+125)	N34° 17' 27.00"	W116° 56' 45.00"	8382.55	true	P	2000.0		10583	10582.55	11-Apr-2016 12:21:19
CARZZ	AASPN	TerrainPt_0_FEYLA:Landing KSNA DSNEE_CARZZ:AASPN		4E (+- 250/+125)	N34° 15' 21.00"	W117° 00' 30.00"	8520.34	true	P	2000.0		10721	10720.34	11-Apr-2016 12:21:19
AASPN	KADYN	TerrainPt_22_FEYLA:Landing KSNA DSNEE_AASPN:KADYN		4E (+- 250/+125)	N34° 15' 21.00"	W117° 00' 30.00"	8520.34	true	P	2000.0		10721	10720.34	11-Apr-2016 12:21:19
KADYN	EROCK	TerrainPt_46_FEYLA:Landing KSNA DSNEE_KADYN:EROCK		4E (+- 250/+125)	N34° 11' 21.00"	W117° 03' 24.00"	6771.65	true	P	2000.0		8972	8971.65	11-Apr-2016 12:21:19
EROCK	LUQAS	TerrainPt_14_FEYLA:Landing KSNA DSNEE_EROCK:LUQAS		4E (+- 250/+125)	N33° 59' 18.00"	W117° 14' 48.00"	3087.27	true	P	2000.0		5288	5287.27	11-Apr-2016 12:21:19
LUQAS	DSNEE	TerrainPt_2_FEYLA:Landing KSNA DSNEE_LUQAS:DSNEE		4E (+- 250/+125)	N33° 57' 39.00"	W117° 16' 51.00"	3080.71	true	P	2000.0		5281	5280.71	11-Apr-2016 12:21:19
DSNEE	JWARD	TerrainPt_9_EED:Landing KSNA DSNEE_DSNEE:JWARD		4E (+- 250/+125)	N33° 43' 18.00"	W117° 32' 39.00"	5374.02	true	P	2000.0		7575	7574.02	11-Apr-2016 12:21:19

## LRSON:Landing KSNA DSNEE Criteria Failures

No failures.
--------------



# Route Evaluation for MARUE:Landing KSNA DSNEE

## MARUE:Landing KSNA DSNEE Evaluation Results Part 1/2

Leg Tp	End Pt	Turn Tp	Alt Restr	Alt Restr 2	Spd Restr	Turn Ang	Leg Length	Min Seg Length
IF	MARUE						0.0	0.0
TF	SCROW	FLY_BY				0.1	24.13	1.0
TF	FJAYY	FLY_BY				0.45	21.66	1.0
TF	LRSON	FLY_BY	+28000.0			26.07	29.08	12.53
TF	GITRR	FLY_BY	+25000.0		280.0	7.31	16.51	12.53
TF	DUUNN	FLY_BY	+20000.0			5.02	14.57	1.0
TF	CARZZ	FLY_BY	+16000.0			0.13	13.9	1.0
TF	AASPN	FLY_BY	+14000.0	-15000.0		12.67	5.67	2.78
TF	KADYN	FLY_BY	-13000.0			6.89	6.73	2.78
TF	EROCK	FLY_BY	+12000.0			25.35	11.49	2.53
TF	LUQAS	FLY_BY	-11000.0			0.43	5.71	2.53
TF	DSNEE	FLY_BY	8000.0		220.0	19.6	10.77	1.47
TF	JWARD	FLY_OVER					3.12	1.47
VM							0.0	0.0

## MARUE:Landing KSNA DSNEE Evaluation Results Part 2/2

Leg Tp	End Pt	Turn Tp	DTA1	DTA1 Turn Rad	DTA1 Turn Alt	DTA1 Turn Spd	DTA1 Bank Ang	DTA1 Tailwind	DTA1 True Airspd	DTA1 vGround	DTA2	DTA2 Turn Rad	DTA2 Turn Alt	DTA2 Turn Spd	DTA2 Bank Ang	DTA2 Tailwind	DTA2 True Airspd	DTA2 vGround
IF	MARUE				0.0	0.0							0.0	0.0				
TF	SCROW	FLY_BY	0.0		41000.0	300.0	0.0	128.0	629.0	570.0	0.05	54.11	41000.0	300.0	5.0	128.0	629.0	570.0
TF	FJAYY	FLY_BY	0.05	54.11	41000.0	300.0	5.0	128.0	629.0	570.0	0.21	54.11	36398.0	300.0	5.0	119.0	573.0	570.0
TF	LRSON	FLY_BY	0.21	54.11	36398.0	300.0	5.0	119.0	573.0	570.0	12.53	54.11	29127.09	300.0	5.0	105.0	498.0	570.0
TF	GITRR	FLY_BY	12.53	54.11	29127.09	300.0	5.0	105.0	498.0	570.0	3.06	47.85	25000.0	280.0	5.0	96.0	431.0	536.0
TF	DUUNN	FLY_BY	3.06	47.85	25000.0	280.0	5.0	96.0	431.0	536.0	1.73	39.34	20000.0	280.0	5.0	87.0	395.0	486.0
TF	CARZZ	FLY_BY	1.73	39.34	20000.0	280.0	5.0	87.0	395.0	486.0	0.19	168.3	16100.34	280.0	1.0	79.0	370.0	449.0
TF	AASPN	FLY_BY	0.19	168.3	16100.34	280.0	1.0	79.0	370.0	449.0	2.78	25.07	14682.29	280.0	6.33	76.0	361.0	437.0
TF	KADYN	FLY_BY	2.78	25.07	14682.29	280.0	6.33	76.0	361.0	437.0	2.62	43.54	13000.0	280.0	3.44	73.0	351.0	424.0
TF	EROCK	FLY_BY	2.62	43.54	13000.0	280.0	3.44	73.0	351.0	424.0	2.53	11.27	12120.32	280.0	12.67	71.0	346.0	417.0
TF	LUQAS	FLY_BY	2.53	11.27	12120.32	280.0	12.67	71.0	346.0	417.0	0.52	138.29	10691.98	280.0	1.0	68.0	339.0	407.0
TF	DSNEE	FLY_BY	0.52	138.29	10691.98	280.0	1.0	68.0	339.0	407.0	1.47	8.53	8000.0	220.0	9.8	63.0	255.0	318.0
TF	JWARD	FLY_OVER	1.47	8.53	8000.0	220.0	9.8	63.0	255.0	318.0	0.0		7600.0	220.0	0.0	62.0	253.0	315.0
VM			0.0		7600.0	220.0	0.0	62.0	253.0	315.0			0.0	0.0				

DSNEE RNAV

## MARUE:Landing KSNA DSNEE Obstacle Evaluation

Start Pt	End Pt	Name	Source	AC (H/V (ft) AMSL)	Lat	Long	Height (ft) AMSL	Mnts Area	Pri/Sec Area	ROC (ft)	WCVH (ft)	MOCA (ft)	Min OCS Alt (ft)	Date
MARUE	SCROW	TerrainPt_39_MARUE:Landing KSNA DSNEE_MARUE:SCROW		4E (+- 250/+125)	N35° 13' 48.00"	W115° 19' 15.00"	6961.94	true	S	1272.2		8435	8434.14	11-Apr-2016 12:21:20
SCROW	FJAYY	TerrainPt_20_MARUE:Landing KSNA DSNEE_SCROW:FJAYY		4E (+- 250/+125)	N35° 06' 33.00"	W115° 22' 06.00"	6190.94	true	P	2000.0		8391	8390.94	11-Apr-2016 12:21:20
FJAYY	LRSON	TerrainPt_30_MARUE:Landing KSNA DSNEE_FJAYY:LRSON		4E (+- 250/+125)	N34° 52' 21.00"	W116° 20' 12.00"	4599.74	true	P	2000.0		6800	6799.74	11-Apr-2016 12:21:20
LRSON	GITRR	TerrainPt_27_FEYLA:Landing KSNA DSNEE_LRSON:GITRR		4E (+- 250/+125)	N34° 40' 33.00"	W116° 35' 21.00"	4904.86	true	P	2000.0		7105	7104.86	11-Apr-2016 12:21:19
GITRR	DUUNN	TerrainPt_20_FEYLA:Landing KSNA DSNEE_GITRR:DUUNN		4E (+- 250/+125)	N34° 38' 33.00"	W116° 37' 45.00"	5987.53	true	P	2000.0		8188	8187.53	11-Apr-2016 12:21:19
DUUNN	CARZZ	TerrainPt_12_FEYLA:Landing KSNA DSNEE_DUUNN:CARZZ		4E (+- 250/+125)	N34° 17' 27.00"	W116° 56' 45.00"	8382.55	true	P	2000.0		10583	10582.55	11-Apr-2016 12:21:19
CARZZ	AASPN	TerrainPt_0_FEYLA:Landing KSNA DSNEE_CARZZ:AASPN		4E (+- 250/+125)	N34° 15' 21.00"	W117° 00' 30.00"	8520.34	true	P	2000.0		10721	10720.34	11-Apr-2016 12:21:19
AASPN	KADYN	TerrainPt_22_FEYLA:Landing KSNA DSNEE_AASPN:KADYN		4E (+- 250/+125)	N34° 15' 21.00"	W117° 00' 30.00"	8520.34	true	P	2000.0		10721	10720.34	11-Apr-2016 12:21:19
KADYN	EROCK	TerrainPt_46_FEYLA:Landing KSNA DSNEE_KADYN:EROCK		4E (+- 250/+125)	N34° 11' 21.00"	W117° 03' 24.00"	6771.65	true	P	2000.0		8972	8971.65	11-Apr-2016 12:21:19
EROCK	LUQAS	TerrainPt_14_FEYLA:Landing KSNA DSNEE_EROCK:LUQAS		4E (+- 250/+125)	N33° 59' 18.00"	W117° 14' 48.00"	3087.27	true	P	2000.0		5288	5287.27	11-Apr-2016 12:21:19
LUQAS	DSNEE	TerrainPt_2_FEYLA:Landing KSNA DSNEE_LUQAS:DSNEE		4E (+- 250/+125)	N33° 57' 39.00"	W117° 16' 51.00"	3080.71	true	P	2000.0		5281	5280.71	11-Apr-2016 12:21:19
DSNEE	JWARD	TerrainPt_9_EED:Landing KSNA DSNEE_DSNEE:JWARD		4E (+- 250/+125)	N33° 43' 18.00"	W117° 32' 39.00"	5374.02	true	P	2000.0		7575	7574.02	11-Apr-2016 12:21:19

## MARUE:Landing KSNA DSNEE Criteria Failures

No failures.

# Route Evaluation for NATEE:Landing KSNA DSNEE

## NATEE:Landing KSNA DSNEE Evaluation Results Part 1/2

Leg Tp	End Pt	Turn Tp	Alt Restr	Alt Restr 2	Spd Restr	Turn Ang	Leg Length	Min Seg Length
IF	NATEE						0.0	0.0
TF	FEYLA	FLY_BY				1.42	35.0	1.0
TF	LRSON	FLY_BY	+28000.0			0.64	29.59	1.0
TF	GITRR	FLY_BY	+25000.0		280.0	7.31	16.51	1.0
TF	DUUNN	FLY_BY	+20000.0			5.02	14.57	1.0
TF	CARZZ	FLY_BY	+16000.0			0.13	13.9	1.0
TF	AASPN	FLY_BY	+14000.0	-15000.0		12.67	5.67	2.78
TF	KADYN	FLY_BY	-13000.0			6.89	6.73	2.78
TF	EROCK	FLY_BY	+12000.0			25.35	11.49	2.53
TF	LUQAS	FLY_BY	-11000.0			0.43	5.71	2.53
TF	DSNEE	FLY_BY	8000.0		220.0	19.6	10.77	1.47
TF	JWARD	FLY_OVER					3.12	1.47
VM							0.0	0.0

## NATEE:Landing KSNA DSNEE Evaluation Results Part 2/2

Leg Tp	End Pt	Turn Tp	DTA1	DTA1 Turn Rad	DTA1 Turn Alt	DTA1 Turn Spd	DTA1 Bank Ang	DTA1 Tailwind	DTA1 True Airspd	DTA1 vGround	DTA2	DTA2 Turn Rad	DTA2 Turn Alt	DTA2 Turn Spd	DTA2 Bank Ang	DTA2 Tailwind	DTA2 True Airspd	DTA2 vGround
IF	NATEE				0.0	0.0							0.0	0.0				
TF	FEYLA	FLY_BY	0.0		41000.0	300.0	0.0	128.0	629.0	570.0	0.67	54.11	36524.26	300.0	5.0	119.0	574.0	570.0
TF	LRSON	FLY_BY	0.67	54.11	36524.26	300.0	5.0	119.0	574.0	570.0	0.3	54.11	29127.09	300.0	5.0	105.0	498.0	570.0
TF	GITRR	FLY_BY	0.3	54.11	29127.09	300.0	5.0	105.0	498.0	570.0	3.06	47.85	25000.0	280.0	5.0	96.0	431.0	536.0
TF	DUUNN	FLY_BY	3.06	47.85	25000.0	280.0	5.0	96.0	431.0	536.0	1.73	39.34	20000.0	280.0	5.0	87.0	395.0	486.0
TF	CARZZ	FLY_BY	1.73	39.34	20000.0	280.0	5.0	87.0	395.0	486.0	0.19	168.3	16100.34	280.0	1.0	79.0	370.0	449.0
TF	AASPN	FLY_BY	0.19	168.3	16100.34	280.0	1.0	79.0	370.0	449.0	2.78	25.07	14682.29	280.0	6.33	76.0	361.0	437.0
TF	KADYN	FLY_BY	2.78	25.07	14682.29	280.0	6.33	76.0	361.0	437.0	2.62	43.54	13000.0	280.0	3.44	73.0	351.0	424.0
TF	EROCK	FLY_BY	2.62	43.54	13000.0	280.0	3.44	73.0	351.0	424.0	2.53	11.27	12120.32	280.0	12.67	71.0	346.0	417.0
TF	LUQAS	FLY_BY	2.53	11.27	12120.32	280.0	12.67	71.0	346.0	417.0	0.52	138.29	10691.98	280.0	1.0	68.0	339.0	407.0
TF	DSNEE	FLY_BY	0.52	138.29	10691.98	280.0	1.0	68.0	339.0	407.0	1.47	8.53	8000.0	220.0	9.8	63.0	255.0	318.0
TF	JWARD	FLY_OVER	1.47	8.53	8000.0	220.0	9.8	63.0	255.0	318.0	0.0		7600.0	220.0	0.0	62.0	253.0	315.0
VM			0.0		7600.0	220.0	0.0	62.0	253.0	315.0			0.0	0.0				

## NATEE:Landing KSNA DSNEE Obstacle Evaluation

Start Pt	End Pt	Name	Source	AC (H/V) (ft) AMSL)	Lat	Long	Height (ft) AMSL	Mnts Area	Pri/Sec Area	ROC (ft)	WCVH (ft)	MOCA (ft)	Min OCS Alt (ft)	Date
NATEE	FEYLA	TerrainPt_14_NATEE:Landing KSNA DSNEE_FEYLA		4E (+-250/+125)	N35° 31' 30.00"	W115° 35' 21.00"	7919.95	true	P	2000.0		10120	10119.95	11-Apr-2016 12:21:20
FEYLA	LRSON	TerrainPt_0_FEYLA:Landing KSNA DSNEE_FEYLA:LRSON		4E (+-250/+125)	N34° 52' 21.00"	W116° 20' 12.00"	4599.74	true	P	2000.0		6800	6799.74	11-Apr-2016 12:21:19
LRSON	GITRR	TerrainPt_27_FEYLA:Landing KSNA DSNEE_LRSON:GITRR		4E (+-250/+125)	N34° 40' 33.00"	W116° 35' 21.00"	4904.86	true	P	2000.0		7105	7104.86	11-Apr-2016 12:21:19
GITRR	DUUNN	TerrainPt_20_FEYLA:Landing KSNA DSNEE_GITRR:DUUNN		4E (+-250/+125)	N34° 38' 33.00"	W116° 37' 45.00"	5987.53	true	P	2000.0		8188	8187.53	11-Apr-2016 12:21:19
DUUNN	CARZZ	TerrainPt_12_FEYLA:Landing KSNA DSNEE_DUUNN:CARZZ		4E (+-250/+125)	N34° 17' 27.00"	W116° 56' 45.00"	8382.55	true	P	2000.0		10583	10582.55	11-Apr-2016 12:21:19
CARZZ	AASPN	TerrainPt_0_FEYLA:Landing KSNA DSNEE_CARZZ:AASPN		4E (+-250/+125)	N34° 15' 21.00"	W117° 00' 30.00"	8520.34	true	P	2000.0		10721	10720.34	11-Apr-2016 12:21:19
AASPN	KADYN	TerrainPt_22_FEYLA:Landing KSNA DSNEE_KADYN		4E (+-250/+125)	N34° 15' 21.00"	W117° 00' 30.00"	8520.34	true	P	2000.0		10721	10720.34	11-Apr-2016 12:21:19
KADYN	EROCK	TerrainPt_46_FEYLA:Landing KSNA DSNEE_KADYN:EROCK		4E (+-250/+125)	N34° 11' 21.00"	W117° 03' 24.00"	6771.65	true	P	2000.0		8972	8971.65	11-Apr-2016 12:21:19
EROCK	LUQAS	TerrainPt_14_FEYLA:Landing KSNA DSNEE_EROCK:LUQAS		4E (+-250/+125)	N33° 59' 18.00"	W117° 14' 48.00"	3087.27	true	P	2000.0		5288	5287.27	11-Apr-2016 12:21:19
LUQAS	DSNEE	TerrainPt_2_FEYLA:Landing KSNA DSNEE_LUQAS:DSNEE		4E (+-250/+125)	N33° 57' 39.00"	W117° 16' 51.00"	3080.71	true	P	2000.0		5281	5280.71	11-Apr-2016 12:21:19
DSNEE	JWARD	TerrainPt_9_EED:Landing KSNA DSNEE_DSNEE:JWARD		4E (+-250/+125)	N33° 43' 18.00"	W117° 32' 39.00"	5374.02	true	P	2000.0		7575	7574.02	11-Apr-2016 12:21:19

## NATEE:Landing KSNA DSNEE Criteria Failures

No failures.

### Evaluation Input

Name:	RS Results Landing KSNA DSNEE
Project:	LGB_SNA DSNEE STAR_Paperwork_20150622
Last evaluated:	11-Apr-2016 12:17:39
Evaluated obstacles?:	true
Obstacle Database:	AIRNAV2
Evaluated terrain?:	true
Worst Case Vegetation Height (ft) AGL:	0

### Terrain Information

Terrain Extractor Name	Extractor Location	Extractor Type	Resolution
DTED 3 Sec	C:\Program Files (x86)\TARGETS\data\DTED-3Sec	org.mitre.caasd.terrain.DTEExtractor	3.0

## Procedure Criteria Failures

No failures.

## Evaluation Notes and Warnings

No failures.

## Obstacles Requiring Accuracy Code Verification

None.

## Database Effective Dates

Database	Date
UddfObstacle	03/09/2015
Tiled AIRNAV2	N/A
OEAAA	N/A
NFDC	03/31/2016
IFP_OFFLINE	N/A
AVNIS	04/11/2016
DOF	03/31/2016
AVNII_OFFLINE	N/A
AIRNAV2	04/11/2016
CIFP	03/31/2016

**Notes:**