

# CHASR RNAV

## Point Of Contact

Organization Name - Southern California Metroplex

POC's Name - Robert E. Henry-Metroplex Lead/Jose Gonzalez-NATCA Co-Lead

Telephone Number - (661) 265-8434

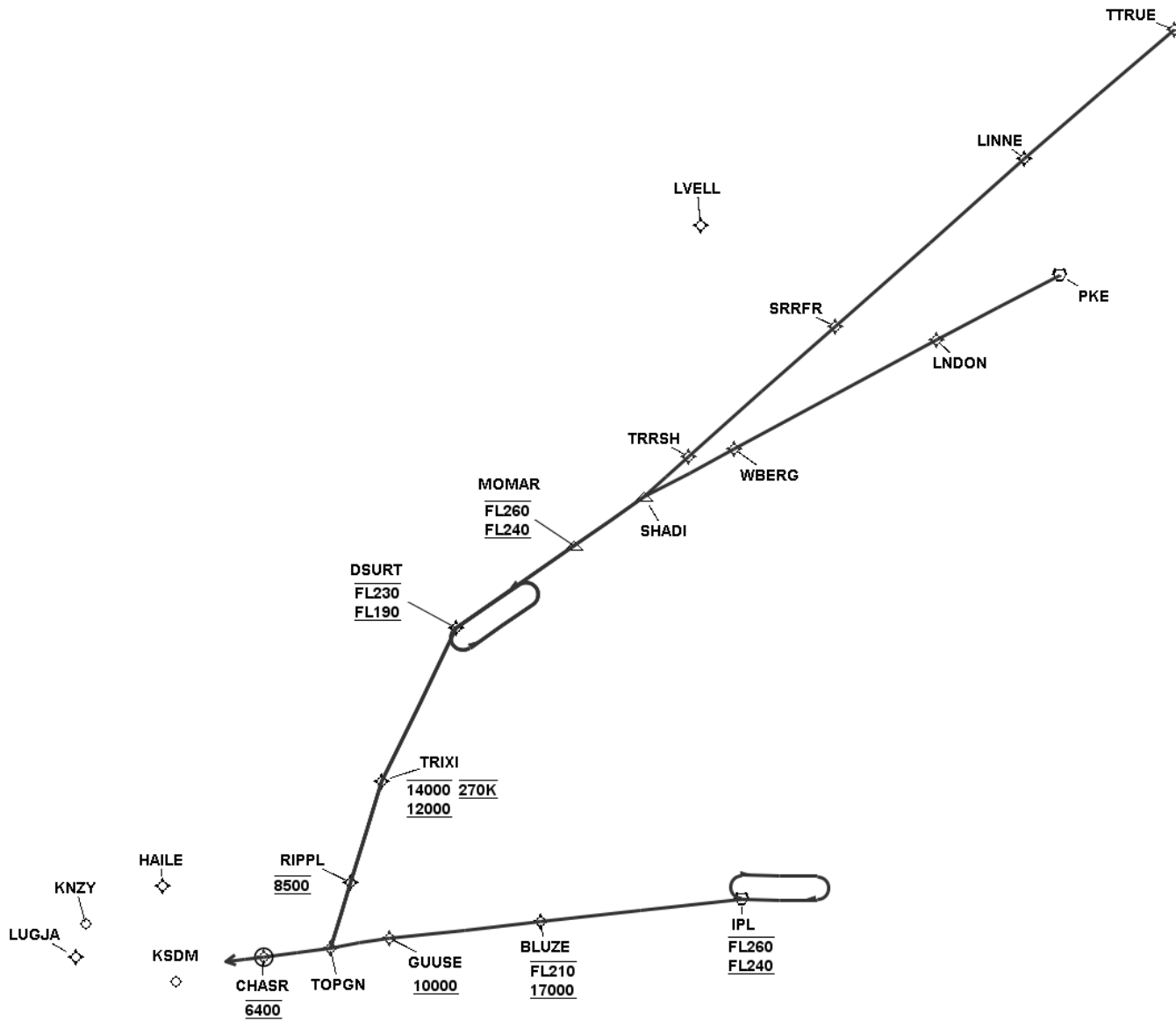
FAX Number - 661-265-8338

Email Address - Robert.Henry@faa.gov;Jose.J.Gonzalez@faa.gov

## TARGETS Distribution Package

Version:5.0.4.1

Date: Fri Jun 26 08:09:46 PDT 2015



### CHASR RNAV

### En Route Transition Data - IPL

DB	End Point	Latitude (D° M' S.ss")	Longitude (D° M' S.ss")	FO/FB	Leg	TC	MC	Distance	Altitude	Speed	MEA	MOCA	Arc Center Lat (D° M' S.ss")	Arc Center Lon (D° M' S.ss")	Arc Radius (NM)
AVNIS	IPL VORTAC	N32 44 55.92	W115 30 30.90		IF				+24000 -26000						
AVNIS	IPL VORTAC	N32 44 55.92	W115 30 30.90		HM	270.49	256.49	10.00			19000				
	BLUZE WP	N32 42 04.52	W116 01 52.25	FB	TF	263.99	249.99	26.61	+17000 -21000		17000	5600			
	GUUSE WP	N32 39 56.86	W116 25 30.61	FB	TF	264.03	250.03	20.06	+10000		10000	6900			
	TOPGN WP	N32 38 38.67	W116 34 36.44	FB	TF	260.43	246.43	7.79			6400	6400			

### En Route Transition Data - MOMAR

DB	End Point	Latitude (D° M' S.ss")	Longitude (D° M' S.ss")	FO/FB	Leg	TC	MC	Distance	Altitude	Speed	MEA	MOCA	Arc Center Lat (D° M' S.ss")	Arc Center Lon (D° M' S.ss")	Arc Radius (NM)
AVNIS	MOMAR WP	N33 30 54.13	W115 56 40.14		IF				+24000 -26000						
AVNIS	DSURT WP	N33 20 15.00	W116 15 00.00	FB	TF	235.36	221.36	18.67	+19000 -23000		19000				
AVNIS	DSURT WP	N33 20 15.00	W116 15 00.00		HM	235.36	221.36	10.00							
AVNIS	TRIXI WP	N33 00 20.00	W116 26 39.00	FB	TF	206.25	192.25	22.15	+12000 -14000	270	12000	7900			
	RIPPL WP	N32 47 08.51	W116 31 30.16	FB	TF	197.26	183.26	13.79	8500		8500	8500			
	TOPGN WP	N32 38 38.67	W116 34 36.44	FB	TF	197.18	183.18	8.88			7300	7300			

### En Route Transition Data - PKE

DB	End Point	Latitude (D° M' S.ss")	Longitude (D° M' S.ss")	FO/FB	Leg	TC	MC	Distance	Altitude	Speed	MEA	MOCA	Arc Center Lat (D° M' S.ss")	Arc Center Lon (D° M' S.ss")	Arc Radius (NM)
AVNIS	PKE VORTAC	N34 06 07.10	W114 40 55.44		IF										
	LNDON WP	N33 57 37.19	W115 00 08.16	FB	TF	242.11	228.11	18.08			19000	5100			
	WBERG WP	N33 43 27.29	W115 31 36.16	FB	TF	241.80	227.80	29.78			19000	6600			
AVNIS	SHADI WP	N33 37 14.18	W115 45 41.97	FB	TF	242.25	228.25	13.30			19000				
AVNIS	MOMAR WP	N33 30 54.13	W115 56 40.14	FB	TF	235.45	221.45	11.13	+24000 -26000		19000				
AVNIS	DSURT WP	N33 20 15.00	W116 15 00.00	FB	TF	235.36	221.36	18.67	+19000 -23000		19000				
AVNIS	DSURT WP	N33 20 15.00	W116 15 00.00		HM	235.36	221.36	10.00							
AVNIS	TRIXI WP	N33 00 20.00	W116 26 39.00	FB	TF	206.25	192.25	22.15	+12000 -14000	270	12000	7900			
	RIPPL WP	N32 47 08.51	W116 31 30.16	FB	TF	197.26	183.26	13.79	8500		8500	8500			
	TOPGN WP	N32 38 38.67	W116 34 36.44	FB	TF	197.18	183.18	8.88			7300	7300			

### En Route Transition Data - TTRUE

DB	End Point	Latitude (D° M' S.ss")	Longitude (D° M' S.ss")	FO/FB	Leg	TC	MC	Distance	Altitude	Speed	MEA	MOCA	Arc Center Lat (D° M' S.ss")	Arc Center Lon (D° M' S.ss")	Arc Radius (NM)
	TTRUE WP	N34 38 01.53	W114 23 05.05		IF										
	LINNE WP	N34 21 09.85	W114 46 19.99	FB	TF	228.89	214.89	25.55			19000				
	SRRFR WP	N33 59 24.09	W115 15 55.37	FB	TF	228.63	214.63	32.78			19000				
	TRRSH WP	N33 42 30.29	W115 38 44.15	FB	TF	228.51	214.51	25.41			19000				
AVNIS	SHADI WP	N33 37 14.18	W115 45 41.97	FB	TF	227.89	213.89	7.84			19000				
AVNIS	MOMAR WP	N33 30 54.13	W115 56 40.14	FB	TF	235.45	221.45	11.13	+24000 -26000		19000				
AVNIS	DSURT WP	N33 20 15.00	W116 15 00.00	FB	TF	235.36	221.36	18.67	+19000 -23000		19000				
AVNIS	DSURT WP	N33 20 15.00	W116 15 00.00		HM	235.36	221.36	10.00							
AVNIS	TRIXI WP	N33 00 20.00	W116 26 39.00	FB	TF	206.25	192.25	22.15	+12000 -14000	270	12000	7900			
	RIPPL WP	N32 47 08.51	W116 31 30.16	FB	TF	197.26	183.26	13.79	8500		8500	8500			
	TOPGN WP	N32 38 38.67	W116 34 36.44	FB	TF	197.18	183.18	8.88			7300	7300			

### Common Route Data - Landing KNZY/KSDM TOPGN

DB	End Point	Latitude (D° M' S.ss")	Longitude (D° M' S.ss")	FO/FB	Leg	TC	MC	Distance	Altitude	Speed	MEA	MOCA	Arc Center Lat (D° M' S.ss")	Arc Center Lon (D° M' S.ss")	Arc Radius (NM)
	TOPGN WP	N32 38 38.67	W116 34 36.44		IF										
	CHASR WP	N32 37 29.90	W116 45 05.87	FO	TF	262.69	248.69	8.93	6400		6400	6200			
	CHASR WP	N32 37 29.90	W116 45 05.87		FM	264.00	250.00								

## Waypoint Data

DB	Waypoint	Arc Center	Lat-Long (DMS.S)	Latitude (Deg)	Longitude (Deg)	Latitude (D°, M.mm')	Longitude (D°, M.mm')	Latitude (D° M' S.ss")	Longitude (D° M' S.ss")
	BLUZE WP		324204.52N-1160152.25W	N 32.7012559	W 116.0311805	N32 42.075	W116 01.871	N32 42 04.52	W116 01 52.25
	CHASR WP		323729.90N-1164505.87W	N 32.6249718	W 116.7516307	N32 37.498	W116 45.098	N32 37 29.90	W116 45 05.87
AVNIS	DSURT WP		332015.00N-1161500.00W	N 33.3375000	W 116.2500000	N33 20.250	W116 15.000	N33 20 15.00	W116 15 00.00
	GUUSE WP		323956.86N-1162530.61W	N 32.6657934	W 116.4251689	N32 39.948	W116 25.510	N32 39 56.86	W116 25 30.61
AVNIS	IPL VORTAC		324455.92N-1153030.90W	N 32.7488667	W 115.5085833	N32 44.932	W115 30.515	N32 44 55.92	W115 30 30.90
AVNIS	KLAX		335633.00N-1182429.07W	N 33.9425003	W 118.4080736	N33 56.550	W118 24.484	N33 56 33.00	W118 24 29.07
	LINNE WP		342109.85N-1144619.99W	N 34.3527368	W 114.7722207	N34 21.164	W114 46.333	N34 21 09.85	W114 46 19.99
	LNDON WP		335737.19N-1150008.16W	N 33.9603314	W 115.0022671	N33 57.620	W115 00.136	N33 57 37.19	W115 00 08.16
AVNIS	MOMAR WP		333054.13N-1155640.14W	N 33.5150361	W 115.9444833	N33 30.902	W115 56.669	N33 30 54.13	W115 56 40.14
AVNIS	PGY VORTAC		323637.22N-1165844.69W	N 32.6103389	W 116.9790806	N32 36.620	W116 58.745	N32 36 37.22	W116 58 44.69
AVNIS	PKE VORTAC		340607.10N-1144055.44W	N 34.1019722	W 114.6820667	N34 06.118	W114 40.924	N34 06 07.10	W114 40 55.44
	RIPPL WP		324708.51N-1163130.16W	N 32.7856975	W 116.5250448	N32 47.142	W116 31.503	N32 47 08.51	W116 31 30.16
AVNIS	SHADI WP		333714.18N-1154541.97W	N 33.6206056	W 115.7616583	N33 37.236	W115 45.699	N33 37 14.18	W115 45 41.97
	SRRFR WP		335924.09N-1151555.37W	N 33.9900254	W 115.2653795	N33 59.402	W115 15.923	N33 59 24.09	W115 15 55.37
	TOPGN WP		323838.67N-1163436.44W	N 32.6440757	W 116.5767886	N32 38.645	W116 34.607	N32 38 38.67	W116 34 36.44
AVNIS	TRIXI WP		330020.00N-1162639.00W	N 33.0055556	W 116.4441667	N33 00.333	W116 26.650	N33 00 20.00	W116 26 39.00
	TRRSH WP		334230.29N-1153844.15W	N 33.7084131	W 115.6455969	N33 42.505	W115 38.736	N33 42 30.29	W115 38 44.15
	TTRUE WP		343801.53N-1142305.05W	N 34.6337577	W 114.3847373	N34 38.025	W114 23.084	N34 38 01.53	W114 23 05.05
	WBERG WP		334327.29N-1153136.16W	N 33.7242471	W 115.5267110	N33 43.455	W115 31.603	N33 43 27.29	W115 31 36.16

## RS Results Landing KNZY/KSDM TOPGN

Last Evaluation: 26-Jun-2015 08:08:50  
Reference Software Version: 1.5.2

### Route Evaluation for IPL:Landing KNZY/KSDM TOPGN

### IPL:Landing KNZY/KSDM TOPGN Evaluation Results Part 1/2

Leg Tp	End Pt	Turn Tp	Alt Restr	Alt Restr 2	Spd Restr	Turn Ang	Leg Length	Min Seg Length
IF	IPL		+24000.0	-26000.0			0.0	0.0
TF	BLUZE	FLY_BY	+17000.0	-21000.0		0.32	26.61	1.0
TF	GUUSE	FLY_BY	+10000.0			3.39	20.06	1.0
TF	TOPGN	FLY_BY				2.34	7.79	1.0
TF	CHASR	FLY_OVER	6400.0				8.93	1.0
FM							0.0	0.0

### IPL:Landing KNZY/KSDM TOPGN Evaluation Results Part 2/2

Leg Tp	End Pt	Turn Tp	DTA1	DTA1 Turn Rad	DTA1 Turn Alt	DTA1 Turn Spd	DTA1 Bank Ang	DTA1 Tailwind	DTA1 True Airspd	DTA1 vGround	DTA2	DTA2 Turn Rad	DTA2 Turn Alt	DTA2 Turn Spd	DTA2 Bank Ang	DTA2 Tailwind	DTA2 True Airspd	DTA2 vGround
IF	IPL				0.0	0.0							0.0	0.0				
TF	BLUZE	FLY_BY	0.0		24000.0	300.0	0.0	95.0	454.0	526.0	0.55	194.75	17000.0	300.0	1.0	81.0	402.0	483.0
TF	GUUSE	FLY_BY	0.55	194.75	17000.0	300.0	1.0	81.0	402.0	483.0	2.69	91.11	10580.55	300.0	1.69	68.0	362.0	430.0
TF	TOPGN	FLY_BY	2.69	91.11	10580.55	300.0	1.69	68.0	362.0	430.0	1.86	90.92	8633.1	250.0	1.17	64.0	293.0	357.0
TF	CHASR	FLY_OVER	1.86	90.92	8633.1	250.0	1.17	64.0	293.0	357.0	0.0		6400.0	250.0	0.0	60.0	283.0	343.0
FM			0.0		6400.0	250.0	0.0	60.0	283.0	343.0			0.0	0.0				

### IPL:Landing KNZY/KSDM TOPGN Obstacle Evaluation

Start Pt	End Pt	Name	Source	AC (H/V) (ft) AMSL	Lat	Long	Height (ft) AMSL	Mnts Area	Pri/Sec Area	ROC (ft)	WCVH (ft)	MOCA (ft)	Min OCS Alt (ft)	Date
IPL	BLUZE	TerrainPt_19_IPL:Landing KNZY/KSDM TOPGN_IPL:BLUZE		4E (+-250/+125)	N32° 37' 33.00"	W116° 03' 39.00"	3979.66	true	S	1416.15		5596	5595.81	26-Jun-2015 08:08:58
BLUZE	GUUSE	TerrainPt_56_IPL:Landing KNZY/KSDM TOPGN_BLUZE:GUUSE		4E (+-250/+125)	N32° 42' 03.00"	W116° 13' 39.00"	4652.23	true	P	2000.0		6853	6852.23	26-Jun-2015 08:08:58
GUUSE	TOPGN	TerrainPt_17_IPL:Landing KNZY/KSDM TOPGN_GUUSE:TOPGN		4E (+-250/+125)	N32° 42' 18.00"	W116° 33' 48.00"	4166.67	true	P	2000.0		6367	6366.67	26-Jun-2015 08:08:58
TOPGN	CHASR	TerrainPt_31_IPL:Landing KNZY/KSDM TOPGN_TOPGN:CHASR		4E (+-250/+125)	N32° 44' 03.00"	W116° 34' 42.00"	4809.71	true	S	1168.95		6179	6178.66	26-Jun-2015 08:08:58

### IPL:Landing KNZY/KSDM TOPGN Criteria Failures

No failures.

## Route Evaluation for MOMAR:Landing KNZY/KSDM TOPGN

### MOMAR:Landing KNZY/KSDM TOPGN Evaluation Results Part 1/2

Leg Tp	End Pt	Turn Tp	Alt Restr	Alt Restr 2	Spd Restr	Turn Ang	Leg Length	Min Seg Length
IF	MOMAR		+24000.0	-26000.0			0.0	0.0
TF	DSURT	FLY_BY	+19000.0	-23000.0		28.95	18.67	3.64
TF	TRIXI	FLY_BY	+12000.0	-14000.0	270.0	8.88	22.15	3.64
TF	RIPPL	FLY_BY	8500.0			0.04	13.79	1.0
TF	TOPGN	FLY_BY				65.54	8.88	2.55
TF	CHASR	FLY_OVER	6400.0				8.93	2.55
FM							0.0	0.0

### MOMAR:Landing KNZY/KSDM TOPGN Evaluation Results Part 2/2

Leg Tp	End Pt	Turn Tp	DTA1	DTA1 Turn Rad	DTA1 Turn Alt	DTA1 Turn Spd	DTA1 Bank Ang	DTA1 Tailwind	DTA1 True Airspd	DTA1 vGround	DTA2	DTA2 Turn Rad	DTA2 Turn Alt	DTA2 Turn Spd	DTA2 Bank Ang	DTA2 Tailwind	DTA2 True Airspd	DTA2 vGround
IF	MOMAR				0.0	0.0							0.0	0.0				
TF	DSURT	FLY_BY	0.0		24000.0	300.0	0.0	95.0	454.0	526.0	3.64	14.11	19000.0	300.0	14.47	85.0	416.0	500.0
TF	TRIXI	FLY_BY	3.64	14.11	19000.0	300.0	14.47	85.0	416.0	500.0	2.38	30.64	12000.0	270.0	4.44	71.0	333.0	404.0
TF	RIPPL	FLY_BY	2.38	30.64	12000.0	270.0	4.44	71.0	333.0	404.0	0.04	105.8	8500.0	250.0	1.0	64.0	292.0	356.0
TF	TOPGN	FLY_BY	0.04	105.8	8500.0	250.0	1.0	64.0	292.0	356.0	2.55	3.96	8500.0	250.0	25.0	64.0	292.0	356.0
TF	CHASR	FLY_OVER	2.55	3.96	8500.0	250.0	25.0	64.0	292.0	356.0	0.0		6400.0	250.0	0.0	60.0	283.0	343.0
FM			0.0		6400.0	250.0	0.0	60.0	283.0	343.0			0.0	0.0				

### MOMAR:Landing KNZY/KSDM TOPGN Obstacle Evaluation

Start Pt	End Pt	Name	Source	AC (H/V) (ft) AMSL	Lat	Long	Height (ft) AMSL	Mnts Area	Pri/Sec Area	ROC (ft)	WCVH (ft)	MOCA (ft)	Min OCS Alt (ft)	Date
MOMAR	DSURT	NONE												
DSURT	TRIXI	TerrainPt_33_MOMAR:Landing KNZY/KSDM TOPGN_DSURT:TRIXI		4E (+-250/+125)	N33° 03' 03.00"	W116° 28' 48.00"	5643.04	true	P	2000.0		7844	7843.04	26-Jun-2015 08:08:58
TRIXI	RIPPL	TerrainPt_27_MOMAR:Landing KNZY/KSDM TOPGN_TRIXI:RIPPL		4E (+-250/+125)	N32° 53' 30.00"	W116° 25' 15.00"	6263.12	true	P	2000.0		8464	8463.12	26-Jun-2015 08:08:58
RIPPL	TOPGN	TerrainPt_0_MOMAR:Landing KNZY/KSDM TOPGN_RIPPL:TOPGN		4E (+-250/+125)	N32° 47' 24.00"	W116° 29' 03.00"	5055.77	true	P	2000.0		7256	7255.77	26-Jun-2015 08:08:58
TOPGN	CHASR	TerrainPt_31_IPL:Landing KNZY/KSDM TOPGN_TOPGN:CHASR		4E (+-250/+125)	N32° 44' 03.00"	W116° 34' 42.00"	4809.71	true	S	1168.95		6179	6178.66	26-Jun-2015 08:08:58

## MOMAR:Landing KNZY/KSDM TOPGN Criteria Failures

No failures.



## Route Evaluation for PKE:Landing KNZY/KSDM TOPGN

### PKE:Landing KNZY/KSDM TOPGN Evaluation Results Part 1/2

Leg Tp	End Pt	Turn Tp	Alt Restr	Alt Restr 2	Spd Restr	Turn Ang	Leg Length	Min Seg Length
IF	PKE						0.0	0.0
TF	LNDON	FLY_BY				0.13	18.08	1.0
TF	WBERG	FLY_BY				0.74	29.78	1.0
TF	SHADI	FLY_BY				6.67	13.3	1.0
TF	MOMAR	FLY_BY	+24000.0	-26000.0		0.01	11.13	1.0
TF	DSURT	FLY_BY	+19000.0	-23000.0		28.95	18.67	3.64
TF	TRIXI	FLY_BY	+12000.0	-14000.0	270.0	8.88	22.15	3.64
TF	RIPPL	FLY_BY	8500.0			0.04	13.79	1.0
TF	TOPGN	FLY_BY				65.54	8.88	2.55
TF	CHASR	FLY_OVER	6400.0				8.93	2.55
FM							0.0	0.0

### PKE:Landing KNZY/KSDM TOPGN Evaluation Results Part 2/2

Leg Tp	End Pt	Turn Tp	DTA1	DTA1 Turn Rad	DTA1 Turn Alt	DTA1 Turn Spd	DTA1 Bank Ang	DTA1 Tailwind	DTA1 True Airspd	DTA1 vGround	DTA2	DTA2 Turn Rad	DTA2 Turn Alt	DTA2 Turn Spd	DTA2 Bank Ang	DTA2 Tailwind	DTA2 True Airspd	DTA2 vGround
IF	PKE				0.0	0.0							0.0	0.0				
TF	LNDON	FLY_BY	0.0		41000.0	300.0	0.0	128.0	629.0	570.0	0.06	54.11	37554.26	300.0	5.0	121.0	586.0	570.0
TF	WBERG	FLY_BY	0.06	54.11	37554.26	300.0	5.0	121.0	586.0	570.0	0.35	54.11	30109.21	300.0	5.0	107.0	507.0	570.0
TF	SHADI	FLY_BY	0.35	54.11	30109.21	300.0	5.0	107.0	507.0	570.0	2.97	50.93	26783.74	300.0	5.0	100.0	477.0	553.0
TF	MOMAR	FLY_BY	2.97	50.93	26783.74	300.0	5.0	100.0	477.0	553.0	0.0		24000.0	300.0	0.0	95.0	454.0	526.0
TF	DSURT	FLY_BY	0.0		24000.0	300.0	0.0	95.0	454.0	526.0	3.64	14.11	19000.0	300.0	14.47	85.0	416.0	500.0
TF	TRIXI	FLY_BY	3.64	14.11	19000.0	300.0	14.47	85.0	416.0	500.0	2.38	30.64	12000.0	270.0	4.44	71.0	333.0	404.0
TF	RIPPL	FLY_BY	2.38	30.64	12000.0	270.0	4.44	71.0	333.0	404.0	0.04	105.8	8500.0	250.0	1.0	64.0	292.0	356.0
TF	TOPGN	FLY_BY	0.04	105.8	8500.0	250.0	1.0	64.0	292.0	356.0	2.55	3.96	8500.0	250.0	25.0	64.0	292.0	356.0
TF	CHASR	FLY_OVER	2.55	3.96	8500.0	250.0	25.0	64.0	292.0	356.0	0.0		6400.0	250.0	0.0	60.0	283.0	343.0
FM			0.0		6400.0	250.0	0.0	60.0	283.0	343.0			0.0	0.0				

CHASR RNAV

### PKE:Landing KNZY/KSDM TOPGN Obstacle Evaluation

Start Pt	End Pt	Name	Source	AC (H/V (ft) AMSL)	Lat	Long	Height (ft) AMSL	Mnts Area	Pri/Sec Area	ROC (ft)	WCVH (ft)	MOCA (ft)	Min OCS Alt (ft)	Date
PKE	LNDON	NONE												
LNDON	WBERG	NONE												
WBERG	SHADI	NONE												
SHADI	MOMAR	NONE												
MOMAR	DSURT	NONE												
DSURT	TRIXI	TerrainPt_33_MOMAR:Landing KNZY/KSDM TOPGN_DSURT:TRIXI		4E (+- 250/+125)	N33° 03' 03.00"	W116° 28' 48.00"	5643.04	true	P	2000.0		7844	7843.04	26-Jun-2015 08:08:58
TRIXI	RIPPL	TerrainPt_27_MOMAR:Landing KNZY/KSDM TOPGN_TRIXI:RIPPL		4E (+- 250/+125)	N32° 53' 30.00"	W116° 25' 15.00"	6263.12	true	P	2000.0		8464	8463.12	26-Jun-2015 08:08:58
RIPPL	TOPGN	TerrainPt_0_MOMAR:Landing KNZY/KSDM TOPGN_RIPPL:TOPGN		4E (+- 250/+125)	N32° 47' 24.00"	W116° 29' 03.00"	5055.77	true	P	2000.0		7256	7255.77	26-Jun-2015 08:08:58
TOPGN	CHASR	TerrainPt_31_IPL:Landing KNZY/KSDM TOPGN_TOPGN:CHASR		4E (+- 250/+125)	N32° 44' 03.00"	W116° 34' 42.00"	4809.71	true	S	1168.95		6179	6178.66	26-Jun-2015 08:08:58

### PKE:Landing KNZY/KSDM TOPGN Criteria Failures

No failures.

## Route Evaluation for TTRUE:Landing KNZY/KSDM TOPGN

### TTRUE:Landing KNZY/KSDM TOPGN Evaluation Results Part 1/2

Leg Tp	End Pt	Turn Tp	Alt Restr	Alt Restr 2	Spd Restr	Turn Ang	Leg Length	Min Seg Length
IF	TTRUE						0.0	0.0
TF	LINNE	FLY_BY				0.04	25.55	1.0
TF	SRRFR	FLY_BY				0.15	32.78	1.0
TF	TRRSH	FLY_BY				0.4	25.41	1.0
TF	SHADI	FLY_BY				7.62	7.84	1.0
TF	MOMAR	FLY_BY	+24000.0	-26000.0		0.01	11.13	1.0
TF	DSURT	FLY_BY	+19000.0	-23000.0		28.95	18.67	3.64
TF	TRIXI	FLY_BY	+12000.0	-14000.0	270.0	8.88	22.15	3.64
TF	RIPPL	FLY_BY	8500.0			0.04	13.79	1.0
TF	TOPGN	FLY_BY				65.54	8.88	2.55
TF	CHASR	FLY_OVER	6400.0				8.93	2.55
FM							0.0	0.0

### TTRUE:Landing KNZY/KSDM TOPGN Evaluation Results Part 2/2

Leg Tp	End Pt	Turn Tp	DTA1	DTA1 Turn Rad	DTA1 Turn Alt	DTA1 Turn Spd	DTA1 Bank Ang	DTA1 Tailwind	DTA1 True Airspd	DTA1 vGround	DTA2	DTA2 Turn Rad	DTA2 Turn Alt	DTA2 Turn Spd	DTA2 Bank Ang	DTA2 Tailwind	DTA2 True Airspd	DTA2 vGround
IF	TTRUE				0.0	0.0							0.0	0.0				
TF	LINNE	FLY_BY	0.0		41000.0	300.0	0.0	128.0	629.0	570.0	0.02	54.11	41000.0	300.0	5.0	128.0	629.0	570.0
TF	SRRFR	FLY_BY	0.02	54.11	41000.0	300.0	5.0	128.0	629.0	570.0	0.07	54.11	35094.84	300.0	5.0	116.0	558.0	570.0
TF	TRRSH	FLY_BY	0.07	54.11	35094.84	300.0	5.0	116.0	558.0	570.0	0.19	54.11	28743.29	300.0	5.0	104.0	495.0	570.0
TF	SHADI	FLY_BY	0.19	54.11	28743.29	300.0	5.0	104.0	495.0	570.0	3.39	50.93	26783.74	300.0	5.0	100.0	477.0	553.0
TF	MOMAR	FLY_BY	3.39	50.93	26783.74	300.0	5.0	100.0	477.0	553.0	0.0		24000.0	300.0	0.0	95.0	454.0	526.0
TF	DSURT	FLY_BY	0.0		24000.0	300.0	0.0	95.0	454.0	526.0	3.64	14.11	19000.0	300.0	14.47	85.0	416.0	500.0
TF	TRIXI	FLY_BY	3.64	14.11	19000.0	300.0	14.47	85.0	416.0	500.0	2.38	30.64	12000.0	270.0	4.44	71.0	333.0	404.0
TF	RIPPL	FLY_BY	2.38	30.64	12000.0	270.0	4.44	71.0	333.0	404.0	0.04	105.8	8500.0	250.0	1.0	64.0	292.0	356.0
TF	TOPGN	FLY_BY	0.04	105.8	8500.0	250.0	1.0	64.0	292.0	356.0	2.55	3.96	8500.0	250.0	25.0	64.0	292.0	356.0
TF	CHASR	FLY_OVER	2.55	3.96	8500.0	250.0	25.0	64.0	292.0	356.0	0.0		6400.0	250.0	0.0	60.0	283.0	343.0
FM			0.0		6400.0	250.0	0.0	60.0	283.0	343.0			0.0	0.0				

CHASR RNAV

## TTRUE:Landing KNZY/KSDM TOPGN Obstacle Evaluation

Start Pt	End Pt	Name	Source	AC (H/V (ft) AMSL)	Lat	Long	Height (ft) AMSL	Mnts Area	Pri/Sec Area	ROC (ft)	WCVH (ft)	MOCA (ft)	Min OCS Alt (ft)	Date
TTRUE	LINNE	NONE												
LINNE	SRRFR	NONE												
SRRFR	TRRSR	NONE												
TRRSR	SHADI	NONE												
SHADI	MOMAR	NONE												
MOMAR	DSURT	NONE												
DSURT	TRIXI	TerrainPt_33_MOMAR:Landing KNZY/KSDM TOPGN_DSURT:TRIXI		4E (+- 250/+125)	N33° 03' 03.00"	W116° 28' 48.00"	5643.04	true	P	2000.0		7844	7843.04	26-Jun-2015 08:08:58
TRIXI	RIPPL	TerrainPt_27_MOMAR:Landing KNZY/KSDM TOPGN_TRIXI:RIPPL		4E (+- 250/+125)	N32° 53' 30.00"	W116° 25' 15.00"	6263.12	true	P	2000.0		8464	8463.12	26-Jun-2015 08:08:58
RIPPL	TOPGN	TerrainPt_0_MOMAR:Landing KNZY/KSDM TOPGN_RIPPL:TOPGN		4E (+- 250/+125)	N32° 47' 24.00"	W116° 29' 03.00"	5055.77	true	P	2000.0		7256	7255.77	26-Jun-2015 08:08:58
TOPGN	CHASR	TerrainPt_31_IPL:Landing KNZY/KSDM TOPGN_TOPGN:CHASR		4E (+- 250/+125)	N32° 44' 03.00"	W116° 34' 42.00"	4809.71	true	S	1168.95		6179	6178.66	26-Jun-2015 08:08:58

## TTRUE:Landing KNZY/KSDM TOPGN Criteria Failures

No failures.

### Evaluation Input

Name:	RS Results Landing KNZY/KSDM TOPGN
Project:	SDM_NZY CHASR STAR paperwork_20150617
Last evaluated:	26-Jun-2015 08:08:50
Evaluated obstacles?:	false
Obstacle Database:	-
Evaluated terrain?:	true
Worst Case Vegetation Height (ft) AGL:	0

### Terrain Information

Terrain Extractor Name	Extractor Location	Extractor Type	Resolution
DTED 3 Sec	C:\Program Files (x86)\TARGETS\data\DTED-3Sec	org.mitre.caasd.terrain.DTEExtractor	3.0

## Procedure Criteria Failures

No failures.

## Evaluation Notes and Warnings

RSEW13: Note: The leg from MOMAR to DSURT is not evaluated for obstacles because the MEA (19,000.0000000000000000 ft) is above 18,000.0000000000000000 ft -- acceptable per criteria.  
 RSEW13: Note: The leg from PKE to LNDON is not evaluated for obstacles because the MEA (19,000.0000000000000000 ft) is above 18,000.0000000000000000 ft -- acceptable per criteria.  
 RSEW13: Note: The leg from LNDON to WBERG is not evaluated for obstacles because the MEA (19,000.0000000000000000 ft) is above 18,000.0000000000000000 ft -- acceptable per criteria.  
 RSEW13: Note: The leg from WBERG to SHADI is not evaluated for obstacles because the MEA (19,000.0000000000000000 ft) is above 18,000.0000000000000000 ft -- acceptable per criteria.  
 RSEW13: Note: The leg from SHADI to MOMAR is not evaluated for obstacles because the MEA (19,000.0000000000000000 ft) is above 18,000.0000000000000000 ft -- acceptable per criteria.  
 RSEW13: Note: The leg from TTRUE to LINNE is not evaluated for obstacles because the MEA (19,000.0000000000000000 ft) is above 18,000.0000000000000000 ft -- acceptable per criteria.  
 RSEW13: Note: The leg from LINNE to SRRFR is not evaluated for obstacles because the MEA (19,000.0000000000000000 ft) is above 18,000.0000000000000000 ft -- acceptable per criteria.  
 RSEW13: Note: The leg from SRRFR to TRRSH is not evaluated for obstacles because the MEA (19,000.0000000000000000 ft) is above 18,000.0000000000000000 ft -- acceptable per criteria.  
 RSEW13: Note: The leg from TRRSH to SHADI is not evaluated for obstacles because the MEA (19,000.0000000000000000 ft) is above 18,000.0000000000000000 ft -- acceptable per criteria.

## Obstacles Requiring Accuracy Code Verification

None.

## Database Effective Dates

Database	Date
Tiled AVNII	N/A
OEAAA	N/A
NFDC	06/25/2015
IFP_OFFLINE	N/A
AVNIS	06/26/2015
DOF	05/28/2015
AVNII_OFFLINE	N/A
AVNII	06/26/2015
CIFP	06/25/2015

**Notes:**